

Quaint Country Cottage!



109 Nawaez Bay Rd



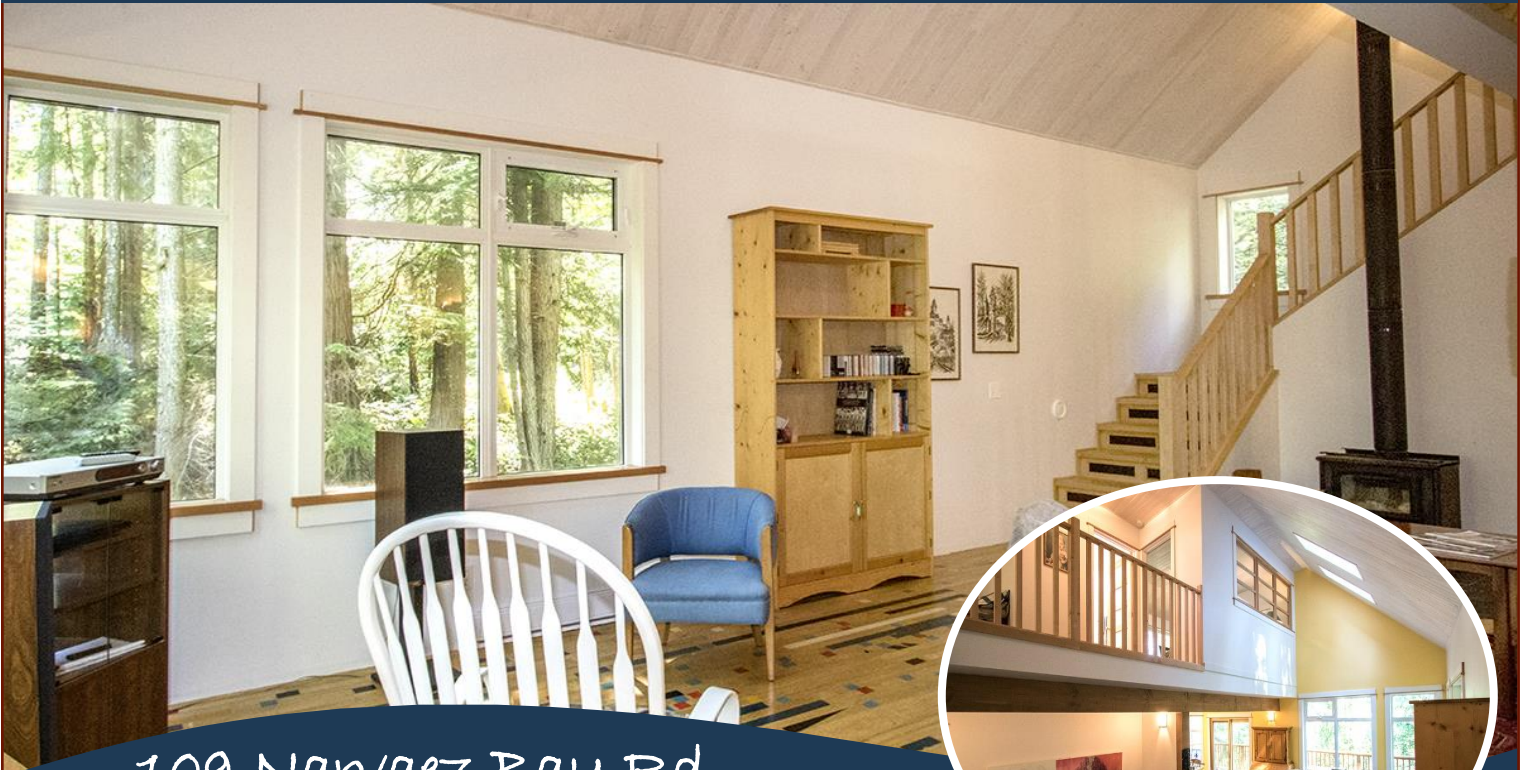
Tucked away in the forested area near our National Park Reserve is this perfect little getaway. The main level has an open concept kitchen/living/dining and up above you will find a multi-purpose loft (for extra sleeping, an office, or craft area) to name a few. The master bedroom and 4 piece bathroom are also on the upper level. There is a partially finished basement where a guest bedroom, second bathroom, laundry room and family room are roughed in ready for finishing touches. One of the fun features in this unique, like-new cottage is the use of a reclaimed gymnasium floor. A conversation piece for sure! This property offers peace and tranquility yet is close to all amenities and minutes away from the ferry terminal. Kick back and enjoy the summer sun on the private & spacious deck or step out where you have over two acres of property to play with. This could be your Island retreat! Come see what Saturna has to offer.



MICHAEL VAUTOUR, LICENSED REALTOR®

Office: 250-539-2121 Cell: 250-818-3919 www.SaturnaRealty.ca

Property Details



109 Nawaez Bay Rd



Year Built: 2003

Lot Acres: 2.14

Bedrooms: 1

Bathrooms: 1

Fin SqFt: 1,008

Unfin SqFt: 594

Bsmt: Part. Finished

Bsmt Height: 8ft

Water: drilled well

Waste: Septic Field

Foundation:

Concrete Poured

Roof: Metal

Ext Fin: Cement
Fiber Siding

Fuel: Electric

Heat: Wood Stove,
Baseboard

FP Location:
Living Room

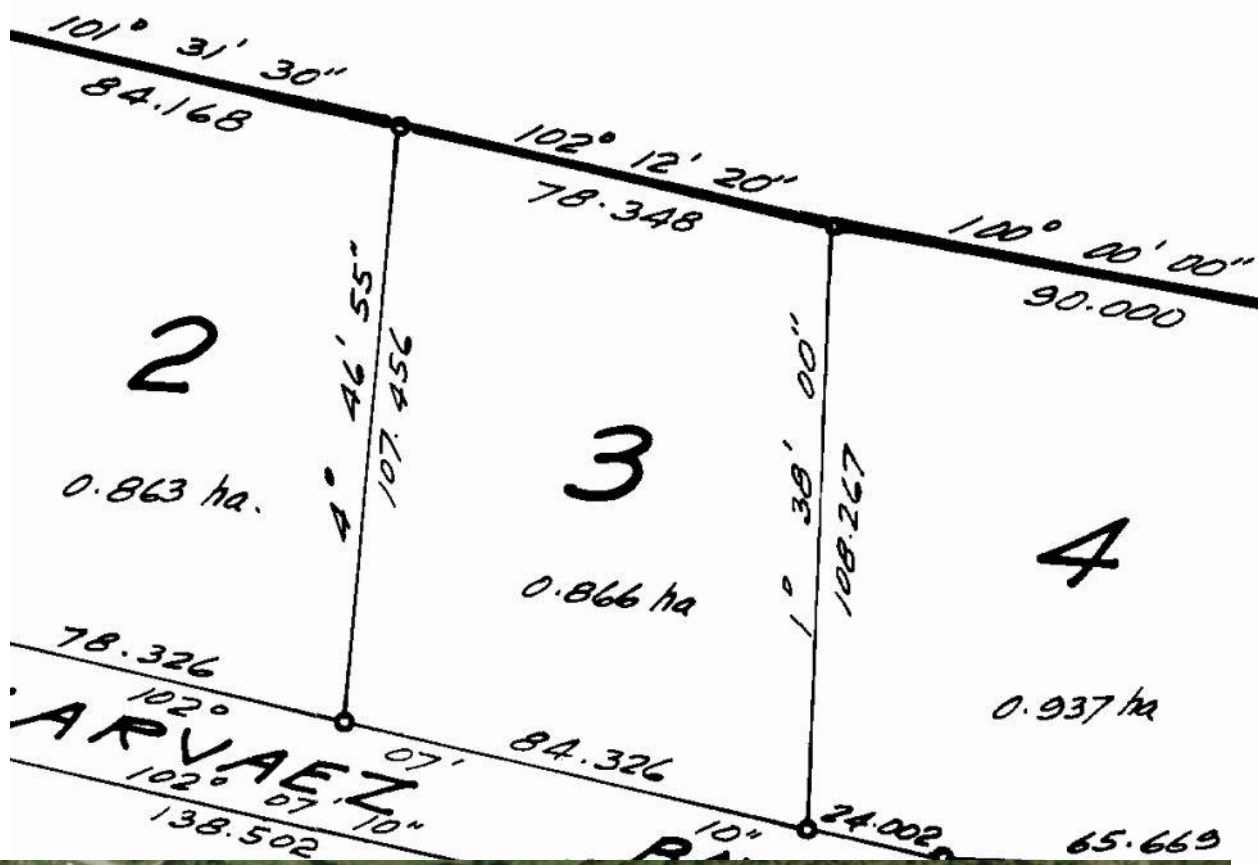
Lot Features:
-Private Property
-Deck
-Storage Shed

Dockside Realty
Victoria Gulf Islands

MICHAEL VAUTOUR, LICENSED REALTOR®

Office: 250-539-2121 Cell: 250-818-3919 www.SaturnaRealty.ca

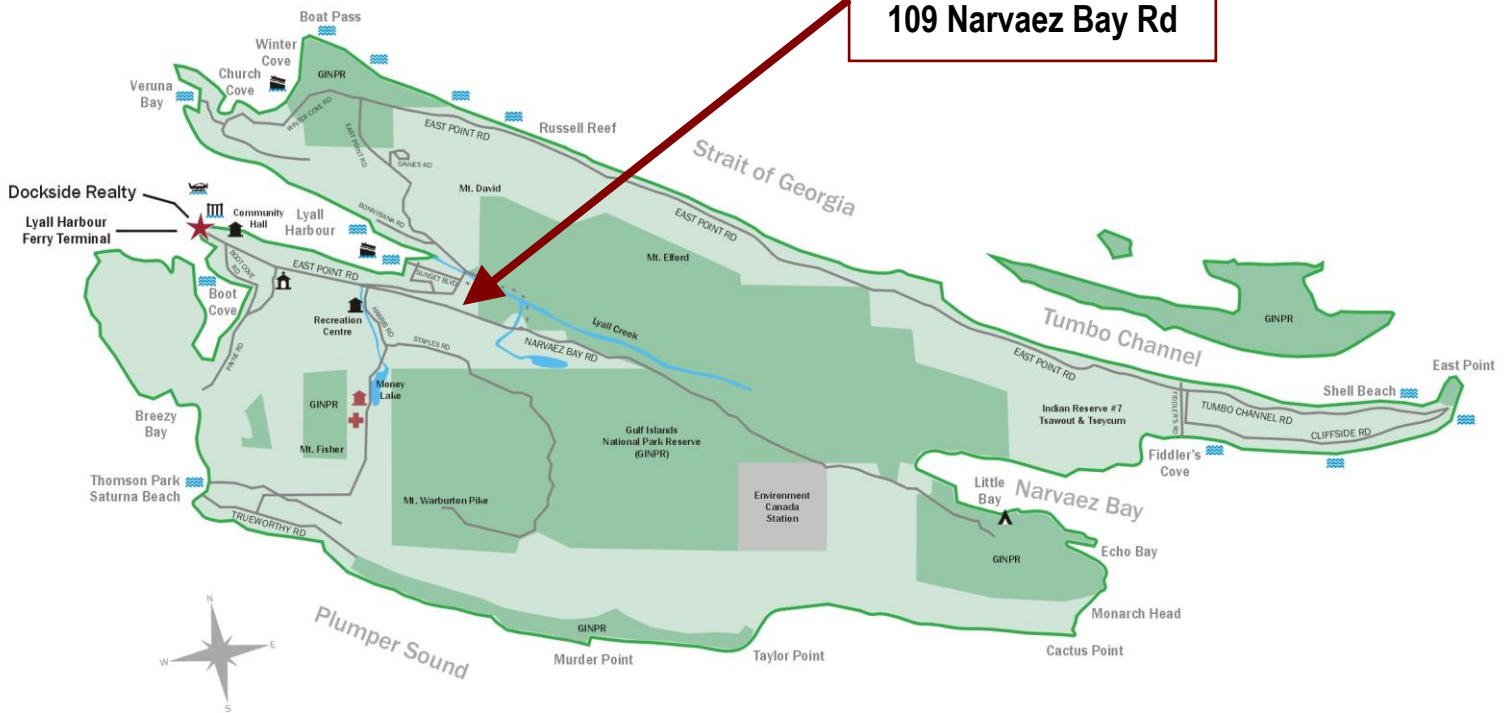
Plot Plan and Aerial View














Google Area Map

Saturna Island British Columbia, Canada

**Subject Property
109 Narvaez Bay Rd**



-  Dockside Realty
-  Public Wharf
-  Boat Launch
-  Float Plane
-  Firehall
-  Medical Centre
-  Municipal
-  Place of Worship
-  Campground
-  Walking Trail
-  Ocean Access/View

Map courtesy of Dockside Realty. Design Copyright © 2012 Minsky Designs www.minskydesigns.com. All rights reserved.

DISCLAIMER: While every effort is made to provide reliable information, Dockside Realty Ltd. makes no representations or warranties as to the accuracy of this brochure.
All measurements are approximate and the buyer is responsible for verifying all data provided.



MICHAEL VAUTOUR, LICENSED REALTOR®
Office: 250-539-2121 Cell: 250-818-3919 www.SaturnaRealty.ca