

Opportunity Calls!



4733 Ketch Road



Great Entry Level Opportunity! Currently the most affordable housing option for sale on Pender Island, this 2 bedroom mobile home has had several upgrades and sits on a beautifully landscaped property. A separate 192 sq. ft. structure is ready to become the workshop, studio or bunky you envision. Sunny south facing property is in a great location near walking trails, Disc Golf Park and Magic Lake.



Hope Bay: 250-629-3166
Sidney: 250-656-5062
info@DocksideRealty.ca

Driftwood: 250-629-3383
Saturna: 250-539-2121
www.DocksideRealty.ca

Property Details



4733 Ketch Road



Year Built (est):
1974

Lot Acres: 0.36 acre

Bedrooms: 2

Bathrooms: 1

Fin SqFt: 768

Unfin SqFt: 0

Water: Municipal

Waste: Septic Field

Foundation:
Brick, None

Roof: Metal, Torch-On

Ext Fin: Aluminum

Fuel: Wood, Electric

Heat: Wood Stove

Lot Features:

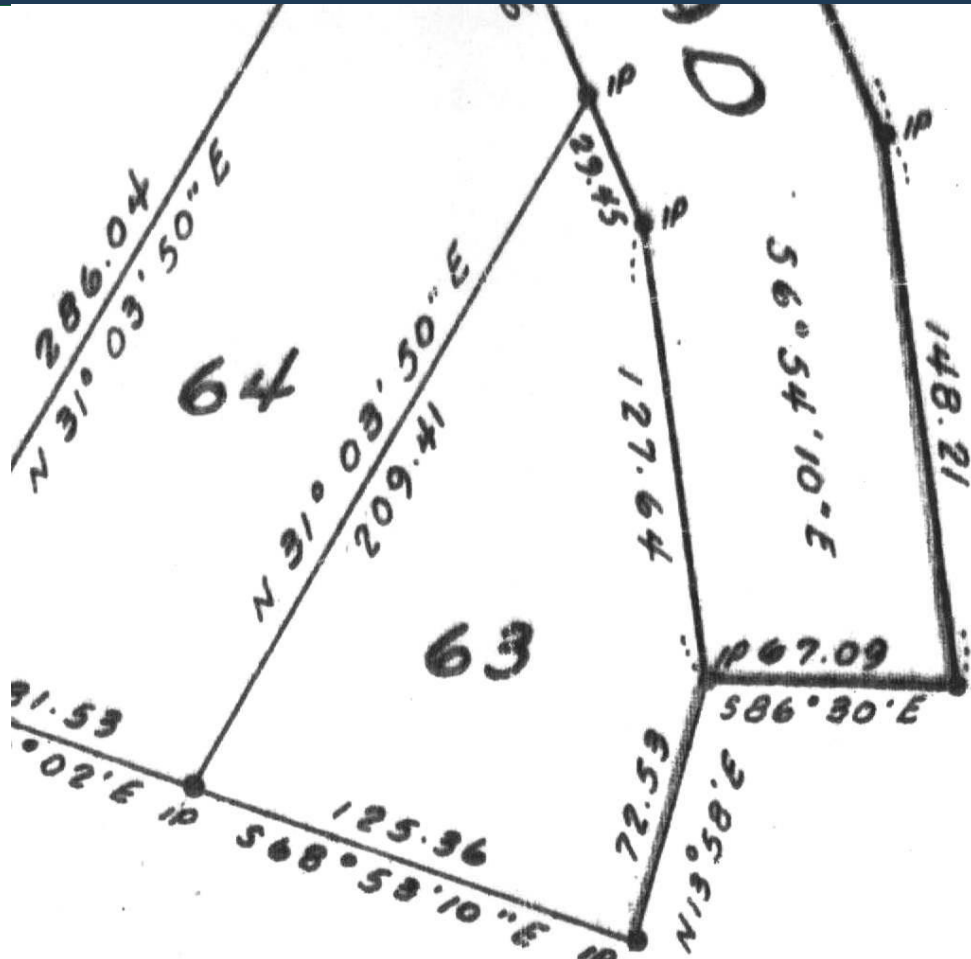
- Deck
- Private
- Workshop/studio
- South facing



Hope Bay: 250-629-3166
Sidney: 250-656-5062
info@DocksideRealty.ca

Driftwood: 250-629-3383
Saturna: 250-539-2121
www.DocksideRealty.ca

Plot Plan and Aerial View

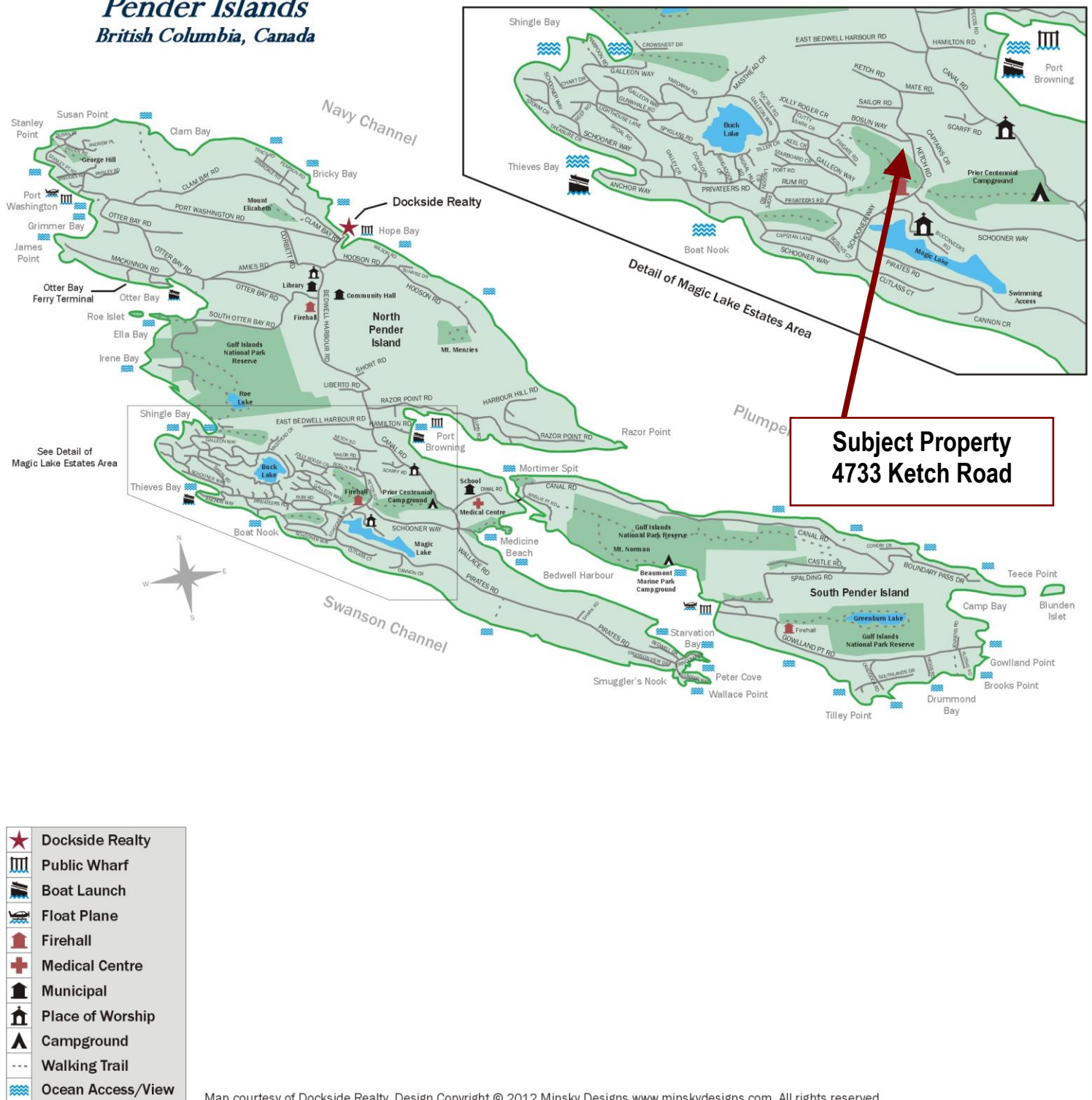


1: 500



Pender Islands Map

Pender Islands British Columbia, Canada



DISCLAIMER: While every effort is made to provide reliable information, Dockside Realty Ltd. makes no representations or warranties as to the accuracy of this brochure.

All measurements are approximate and the buyer is responsible for verifying all data provided.



Hope Bay: 250-629-3166
Sidney: 250-656-5062
info@DocksideRealty.ca

Driftwood: 250-629-3383
Saturna: 250-539-2121
www.DocksideRealty.ca