

Oceanfront Beauty!



1604 Chart Drive



Enjoy ever changing views over Active Pass from this unique, medium bank, oceanfront building lot on pristine Pender Island. Value added improvements include: driveway in to site, power and municipal water hooked up and an engineered sewer treatment system in place. Easily access the water's edge by constructing a short series of steps. Mooring buoy and dock potential. Property is located at the end of a super quiet, no through road. This is a rare opportunity to realize your vision in a beautiful setting.

Property Details



1604 Chart Drive



Lot Acres: 0.25

Water: municipal

Potability Test: n/a

Waste: Treatment System

Services: At lot line

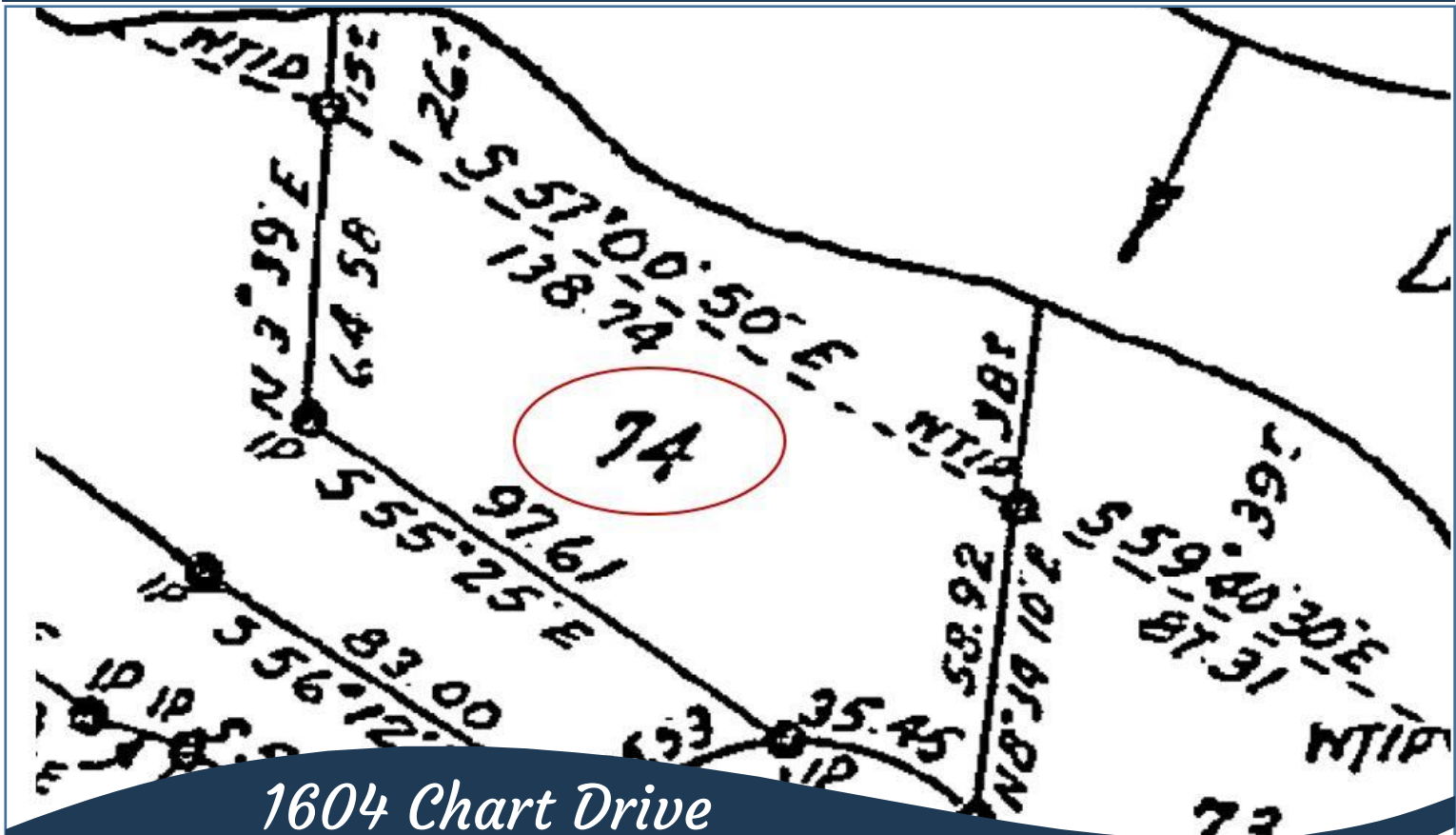
Driveway: Gravel

Bldg Scheme: No

Lot Features:

- Ocean Front
- Cleared
- Private Property
- Level
- View
- Cul-de-sac

Plot Plan and Aerial View



Driftwood: 250-629-3383
Saturna: 250-539-2121
www.DocksideRealty.ca