

Delightful Ocean View Home!



2613 Chart Drive



Ocean View from Top of the Hill. This delightful 3BR 2BA home has been loved by the same owner for many years. Very private property with a paved driveway, sundeck with ocean views. Open Plan Kitchen-Living-Dining Room-2BRs up with 4-piece BA, airtight woodstove + built in island. Lower level has workshop, 2BRs+2pc BA. Basement floor is heated, and furnishings are negotiable! Enjoy a 0.67 acre property that is very easy to maintain. Walk to Shingle Bay Park + Roe Lake National Park or to Thieves Bay to watch the whales. Delightful in every way!



Hope Bay: 250-629-3166
Sidney: 250-656-5062
info@DocksideRealty.ca

Driftwood: 250-629-3383
Saturna: 250-539-2121
www.DocksideRealty.ca

Property Details



2613 Chart Drive



Year Built (est):
1982

Lot Acres: 0.67 acre

Bedrooms: 3

Bathrooms: 2

Fin SqFt: 1258

Unfin SqFt: 550

Bsmt: Part.
Finished

Bsmt Height: 8 ft

Water: Municipal

Waste: Sewer

Foundation:
Concrete Poured

Roof: Asphalt
Shingle

Ext Fin: Wood

Fuel: Wood, Electric

Heat: Wood Stove,
Baseboard

FP Location: Living
Room

Lot Features:

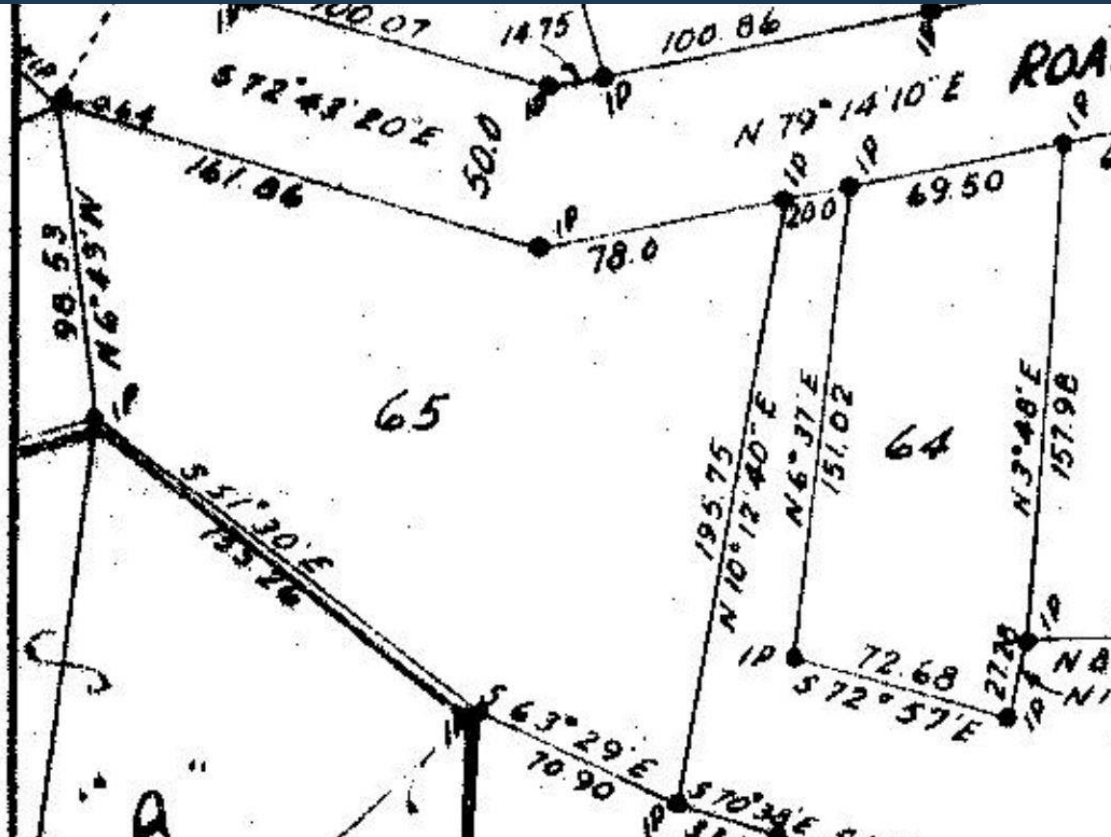
- Ocean Views
- Private
- Sun Deck
- Paved Driveway
- Workshop



Hope Bay: 250-629-3166
Sidney: 250-656-5062
info@DocksiderRealty.ca

Driftwood: 250-629-3383
Saturna: 250-539-2121
www.DocksiderRealty.ca

Plot Plan and Aerial View

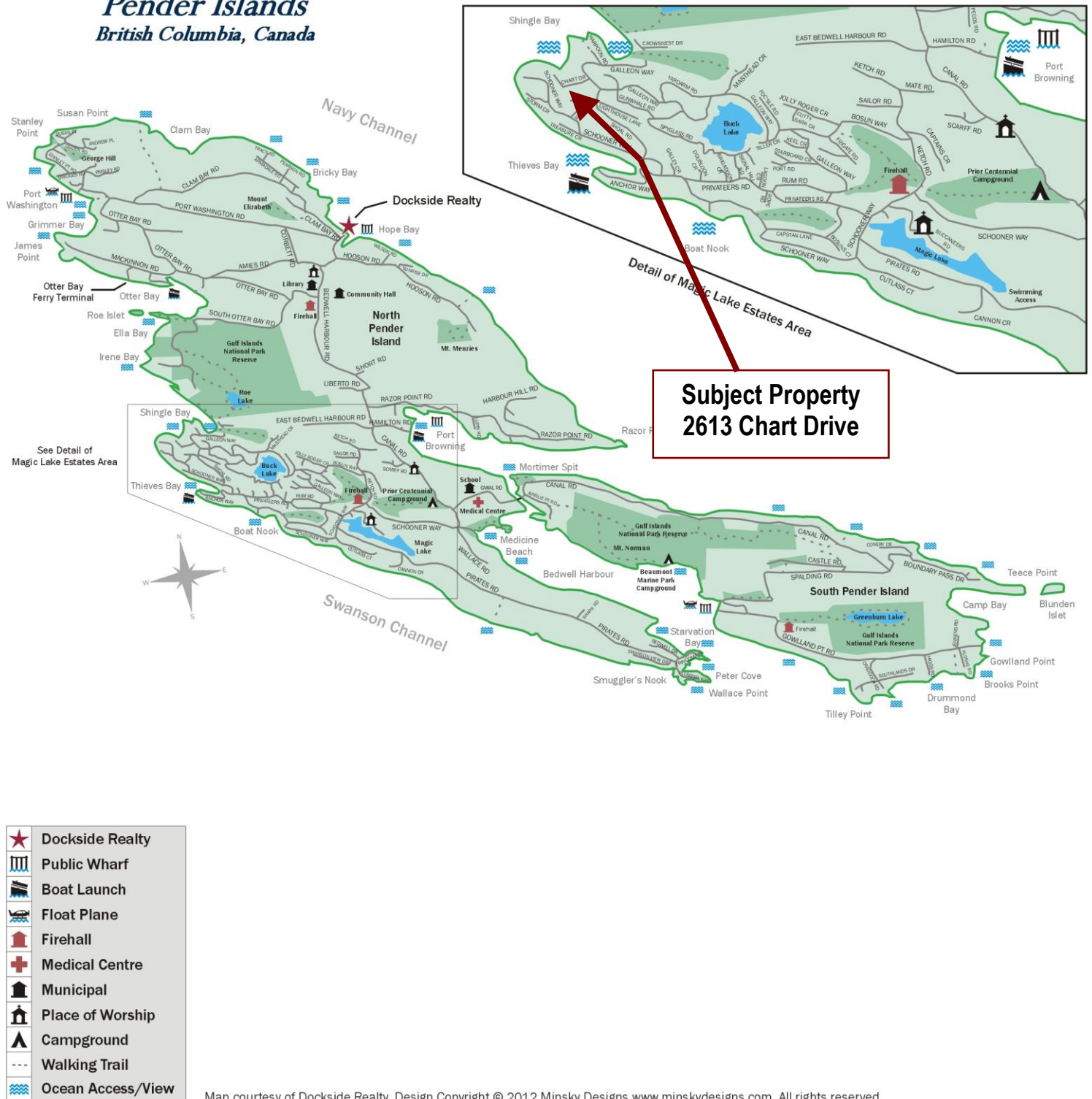


Hope Bay: 250-629-3166
Sidney: 250-656-5062
info@DocksdeRealty.ca

Driftwood: 250-629-3383
Saturna: 250-539-2121
www.DocksdeRealty.ca

Pender Islands Map

Pender Islands British Columbia, Canada



DISCLAIMER: While every effort is made to provide reliable information, Dockside Realty Ltd. makes no representations or warranties as to the accuracy of this brochure.

All measurements are approximate and the buyer is responsible for verifying all data provided.



Hope Bay: 250-629-3166
Sidney: 250-656-5062
info@DocksideRealty.ca

Driftwood: 250-629-3383
Saturna: 250-539-2121
www.DocksideRealty.ca