

# Oceanfront Home & Cottage!



*2729 Anchor Way*



Beautiful family home facing south west on Pender Island. Walk-on beach to launch your kayaks and moor your boat across the street at Thieves Bay Marina. The private driveway leads you to parking for 4 cars and an RV. There is a gated courtyard with a bright skylighted entrance. One level living in this 2 bedroom 2 bath home, plus a 692 sqft self-contained cottage, with 2 bedrooms 1 bath and a carport. Ocean views from every room in the house. Large kitchen, with a breakfast nook and bar leading you to the dining room. Open plan living room with a glassed-in solarium, and bay windows throughout. Covered garage walkway to the side-entrance leading you through the mudroom. Bright, warm and airy is the best way to describe this well-built 2200 sqft home. All measurements are approximate and must be verified by the buyer and their realtor.

# Property Details



2729 Anchor Way



**Year Built (est):**  
1995

**Lot Acres:** 0.52

**Bedrooms:** 4

**Bathrooms:** 3

**Fin SqFt:** 3,178

**Unfin SqFt:** 288

**Bsmt:** Not Finished

**Bsmt Height:** 6 ft

**Water:** City/municipal

**Waste:** Sewer

**Foundation:**  
Concrete Poured

**Roof:** Asphalt  
Shingle

**Ext Fin:** Wood

**Fuel:** Wood, Electric

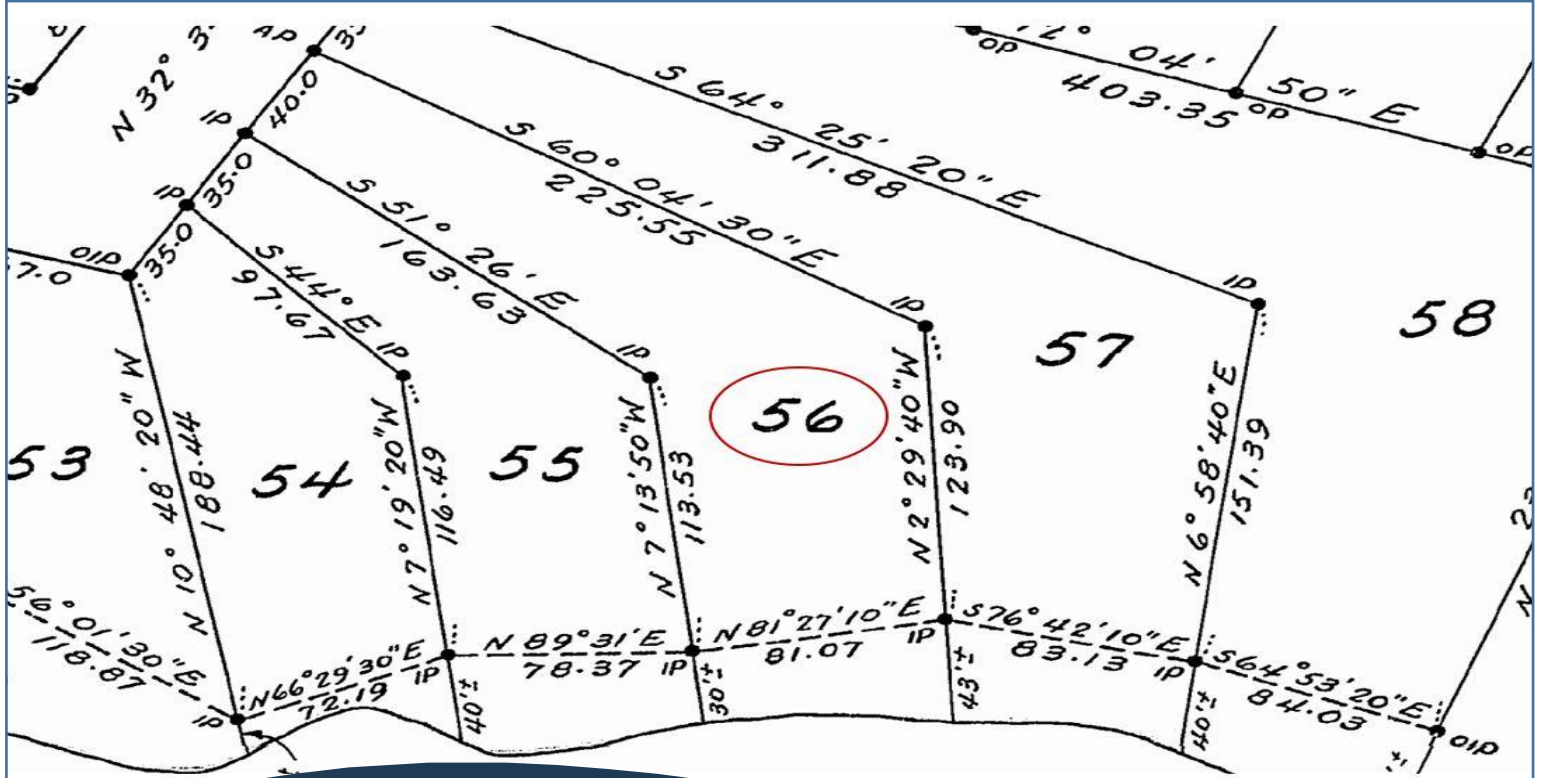
**Heat:** Wood Stove,  
Baseboard

**FP Location:** Living  
Room

**Lot Features:**

- Waterfront
- Cottage
- South west view
- Walk to marina
- RV parking

# Plot Plan and Aerial View



2729 Anchor Way

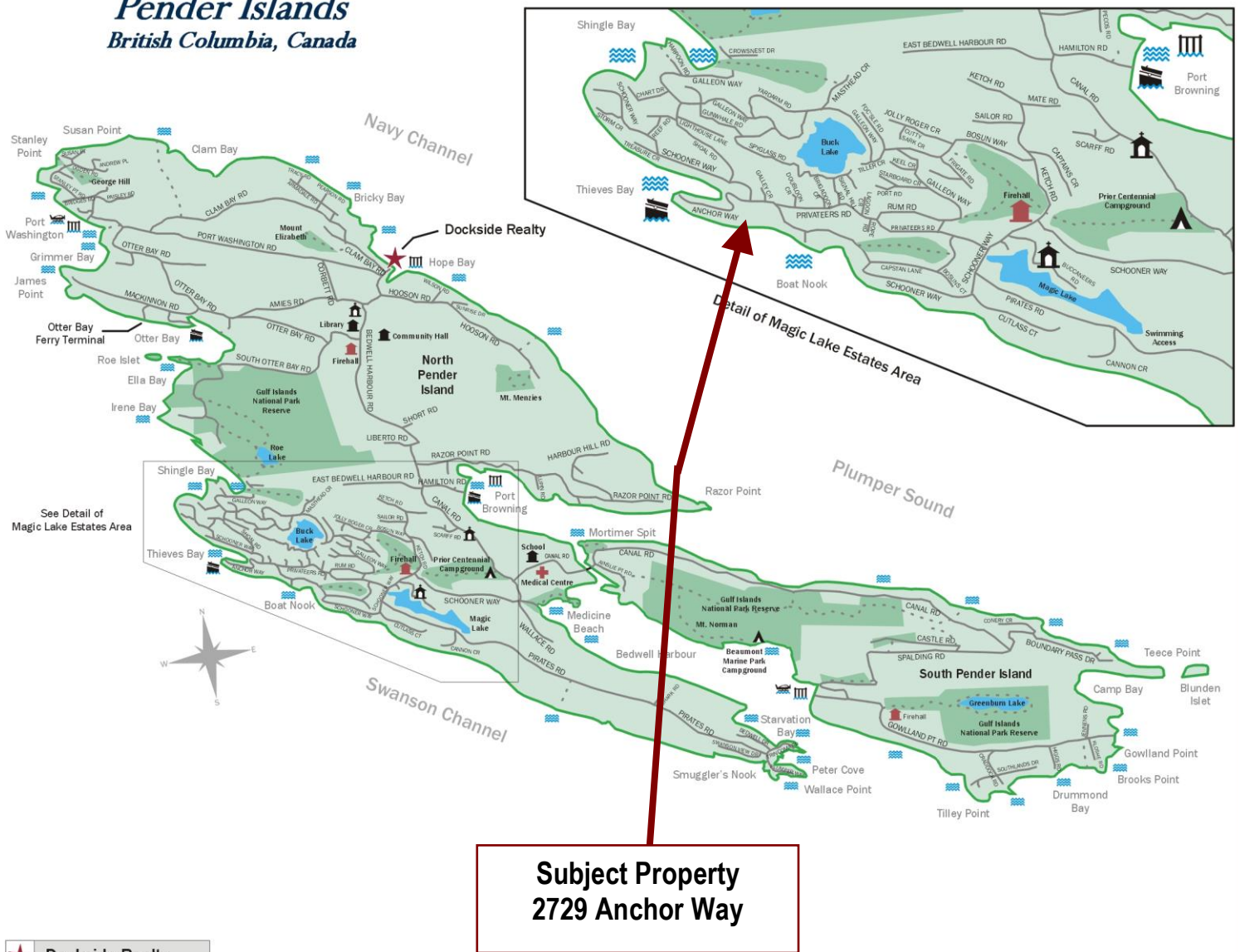


Hope Bay: 250-629-3166  
Sidney: 250-656-5062  
info@DocksideRealty.ca

Driftwood: 250-629-3383  
Saturna: 250-539-2121  
www.DocksideRealty.ca

# Pender Islands Map

## Pender Islands British Columbia, Canada



**Subject Property  
2729 Anchor Way**

- Dockside Realty
- Public Wharf
- Boat Launch
- Float Plane
- Firehall
- Medical Centre
- Municipal
- Place of Worship
- Campground
- Walking Trail
- Ocean Access/View

Map courtesy of Dockside Realty. Design Copyright © 2012 Minsky Designs www.minskydesigns.com. All rights reserved.

***DISCLAIMER: While every effort is made to provide reliable information, Dockside Realty Ltd. makes no representations or warranties as to the accuracy of this brochure.***

***All measurements are approximate and the buyer is responsible for verifying all data provided.***



Hope Bay: 250-629-3166  
Sidney: 250-656-5062  
info@DocksideRealty.ca

Driftwood: 250-629-3383  
Saturna: 250-539-2121  
www.DocksideRealty.ca