

Ocean & Lake Views!



3611 Foc'sle Road



Ocean & Lake View Custom Built Home! The current owners designed & built this fabulous one-of-a-kind Westcoast home on Pender Island to maximize the views & the southern exposure from almost every window. The owners, one being a retired ship builder, completed the project meticulously over a number of years, starting in 1992, & obtaining a Final Occupancy Permit in 2005. With edge-grain hardwood flooring, cherry kitchen cabinets & wood trim accents, this 3 BR, 4 BA, approximately 1600 square foot multi-level home is immaculate, in move-in-ready condition. A lovely detached greenhouse, woodshed & giant workshop on the lower level put the icing on the cake. The outside spaces are delightful, fully fenced, with established gardens & fruit trees. The owners are downsizing & this has been their dream home for many years. Put this one on your "must see" list, if you are planning a move to the Southern Gulf Islands!



Hope Bay: 250-629-3166
Sidney: 250-656-5062
info@DocksiderRealty.ca

Driftwood: 250-629-3383
Saturna: 250-539-2121
www.DocksiderRealty.ca

Property Details



3611 Foc'sle Road



Year Built (est):
2005

Lot Acres: 0.34 acre

Bedrooms: 3

Bathrooms: 4

Fin SqFt: 1600

Unfin SqFt: 693

Bsmt: Not Finished

Bsmt Height: 8'

Water: Municipal

Waste: Sewer

Foundation:
Concrete Poured

Roof: Metal

Ext Fin: Vinyl

Fuel: Wood

Heat: Wood Stove,
Baseboard

Lot Features:

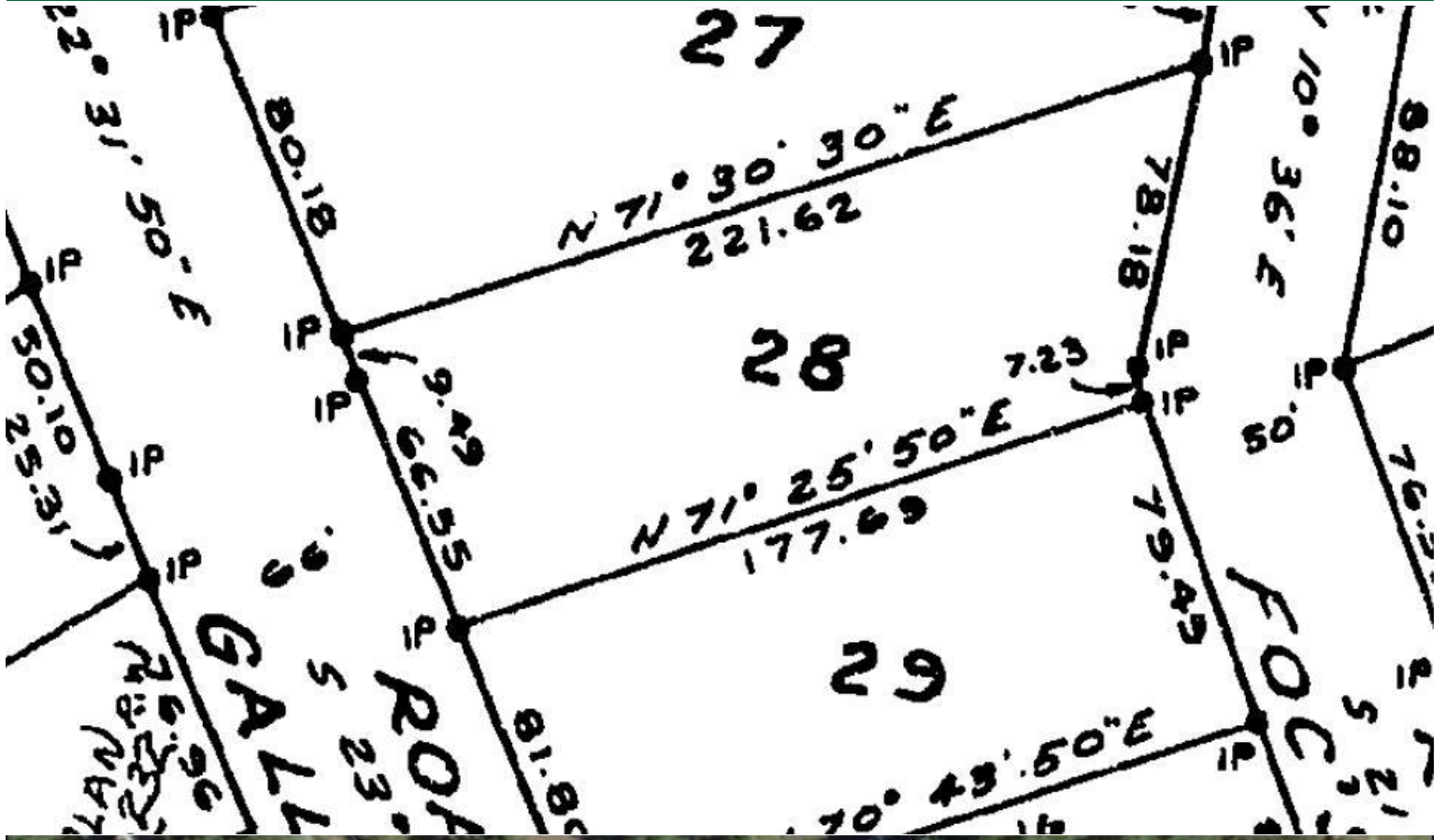
- Ocean View
- Lake View
- Private
- Greenhouse,
woodshed &
workshop
- Gardens & Fruit
Trees



Hope Bay: 250-629-3166
Sidney: 250-656-5062
info@DocksiderRealty.ca

Driftwood: 250-629-3383
Saturna: 250-539-2121
www.DocksiderRealty.ca

Plot Plan and Aerial View

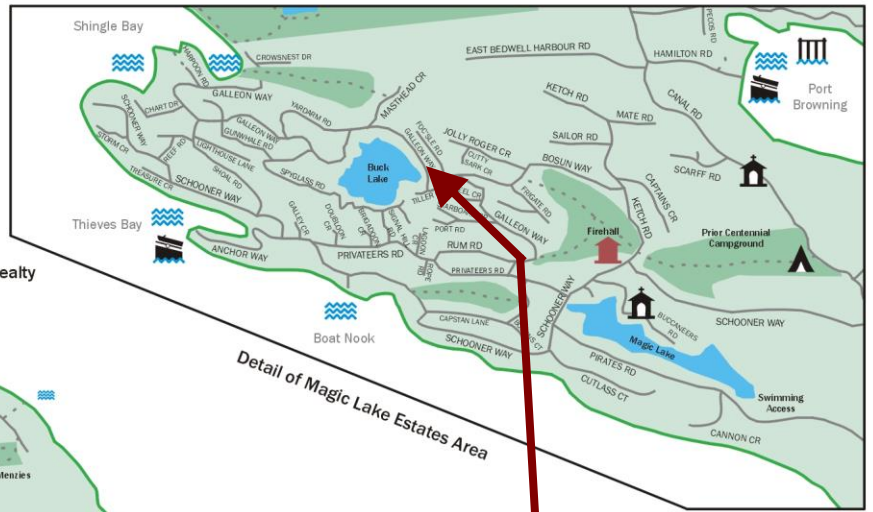


Hope Bay: 250-629-3166
Sidney: 250-656-5062
info@DocksideRealty.ca

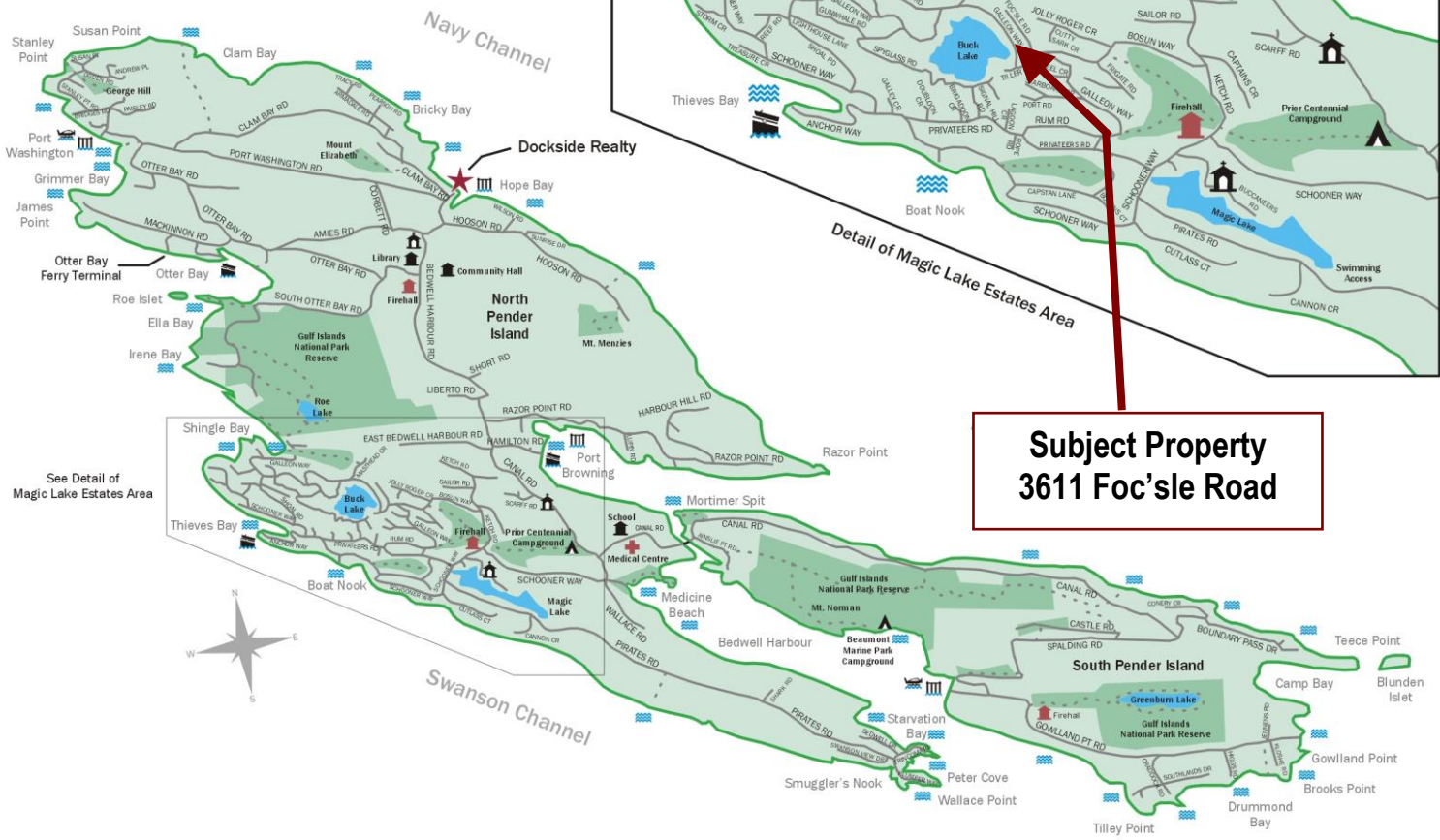
Driftwood: 250-629-3383
Saturna: 250-539-2121
www.DocksideRealty.ca

Pender Islands Map

Pender Islands British Columbia, Canada



**Subject Property
3611 Foc'sle Road**



- Dockside Realty
- Public Wharf
- Boat Launch
- Float Plane
- Firehall
- Medical Centre
- Municipal
- Place of Worship
- Campground
- Walking Trail
- Ocean Access/View

Map courtesy of Dockside Realty. Design Copyright © 2012 Minsky Designs www.minskydesigns.com. All rights reserved.

DISCLAIMER: While every effort is made to provide reliable information, Dockside Realty Ltd. makes no representations or warranties as to the accuracy of this brochure.
All measurements are approximate and the buyer is responsible for verifying all data provided.



Hope Bay: 250-629-3166
Sidney: 250-656-5062
info@DocksideRealty.ca

Driftwood: 250-629-3383
Saturna: 250-539-2121
www.DocksideRealty.ca