

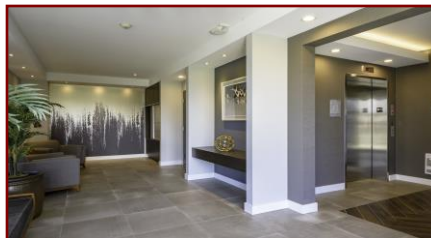
Luxury Westcoast Penthouse!



402-2777 North Beach Drive



Located in a prestigious gated community, this 2-year-old development was custom built by award winning developer Crowne Pacific Homes. This top floor unit has a stunning panoramic east facing view of the ocean, Quadra Island, and the Coastal Mountains. Boasting over 1200-sqft, this 2BR plus den unit features open concept design, vaulted ceilings, floor to ceiling windows, luxury plank flooring, quartz countertops, large custom tiled shower in ensuite, heated tile floors in bathrooms, and ocean views from all main living areas. The expansive entertaining size private deck offers amazing views of all the marine traffic and wildlife, and you can also enjoy the most fabulous sunrises with your morning coffee. The building offers secure underground parking, meeting room, exercise room, separate storage, bicycle storage, centrally located elevator, and unique California style outside entrances.



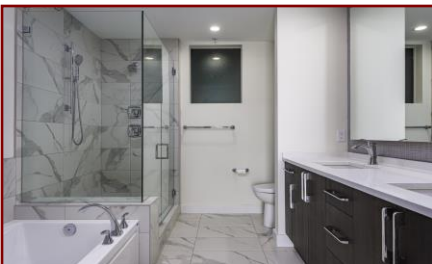
SUZI JACK, *PREC, LICENSED REALTOR®

Office: 250-656-5062 Cell: 250-203-3919 www.DocksideRealty.ca

Property Details



402-2777 North Beach Drive



Year Built (est):
2018

Bedrooms: 2

Bathrooms: 2

Fin SqFt: 1,219

Unfin SqFt: 0

Water: City/Munic.

Waste: Sewer

Foundation:
Concrete Poured

Roof: Membrane

Ext Fin: Cement
Fiber Board, Metal

Fuel: Electric

Heat: Heat Pump,
Air conditioning

Features:

- Ocean View
- Large Deck
- Gated Community



SUZI JACK, *PREC, LICENSED REALTOR®

Office: 250-656-5062 Cell: 250-203-3919 www.DocksdeRealty.ca

Floor Plans

402-2771 North Beach Drive, Campbell River BC

Main Floor Total Exterior Area 1307 sq ft



0 4 8
ft

PREPARED: May, 2020



White regions are excluded from total floor area. All room dimensions and floor areas must be considered approximate and are subject to independent verification. For method of measurement please see <https://youriguide.com/measure/>.



SUZI JACK, *PREC, LICENSED REALTOR®
Office: 250-656-5062 Cell: 250-203-3919 www.DocksideRealty.ca

Aerial

