

Laughing Horse Farm!



4401 Otter Bay Road



Presenting a tremendous opportunity to acquire one of Pender Islands landmark properties. Ideally situated in a prime location, Laughing Horse Farm boasts 13.77 acres; featuring a 7700 SQ. FT. riding ring with 3" washed sand base, a variety of pasture grasses, spacious workshop with connecting barn, 2 loafing sheds and storage for 400 bales of hay. 30 gpm. drilled well provides ample water to expand the equestrian/livestock applications and develop market gardens. The charming character farmhouse has been 85% upgraded with newer country kitchen, fir flooring, insulation, wiring, windows and septic system. Grounds feature several outbuildings, many mature fruit and nut trees and an array of beautiful perennials. Current owners have loved this property for decades and will include all workshop tools, tractor and attachments. Get back to the land and in harmony with your soul on beautiful Laughing Horse Farm.



Hope Bay: 250-629-3166
Sidney: 250-656-5062
info@DocksiderRealty.ca

Driftwood: 250-629-3383
Saturna: 250-539-2121
www.DocksiderRealty.ca

Property Details



4401 Otter Bay Road



Year Built (est):
1939

Lot Acres: 13.77
acres

Bedrooms: 2

Bathrooms: 1

Fin SqFt: 1396

Unfin SqFt:

Bsmt: Crawl Space

Water: Drilled Well

Waste: Septic

Foundation:
Post & Pad

Roof: Metal

Ext Fin: Wood

Fuel: Wood, Electric

Heat: Wood Stove,
Baseboard

Lot Features:

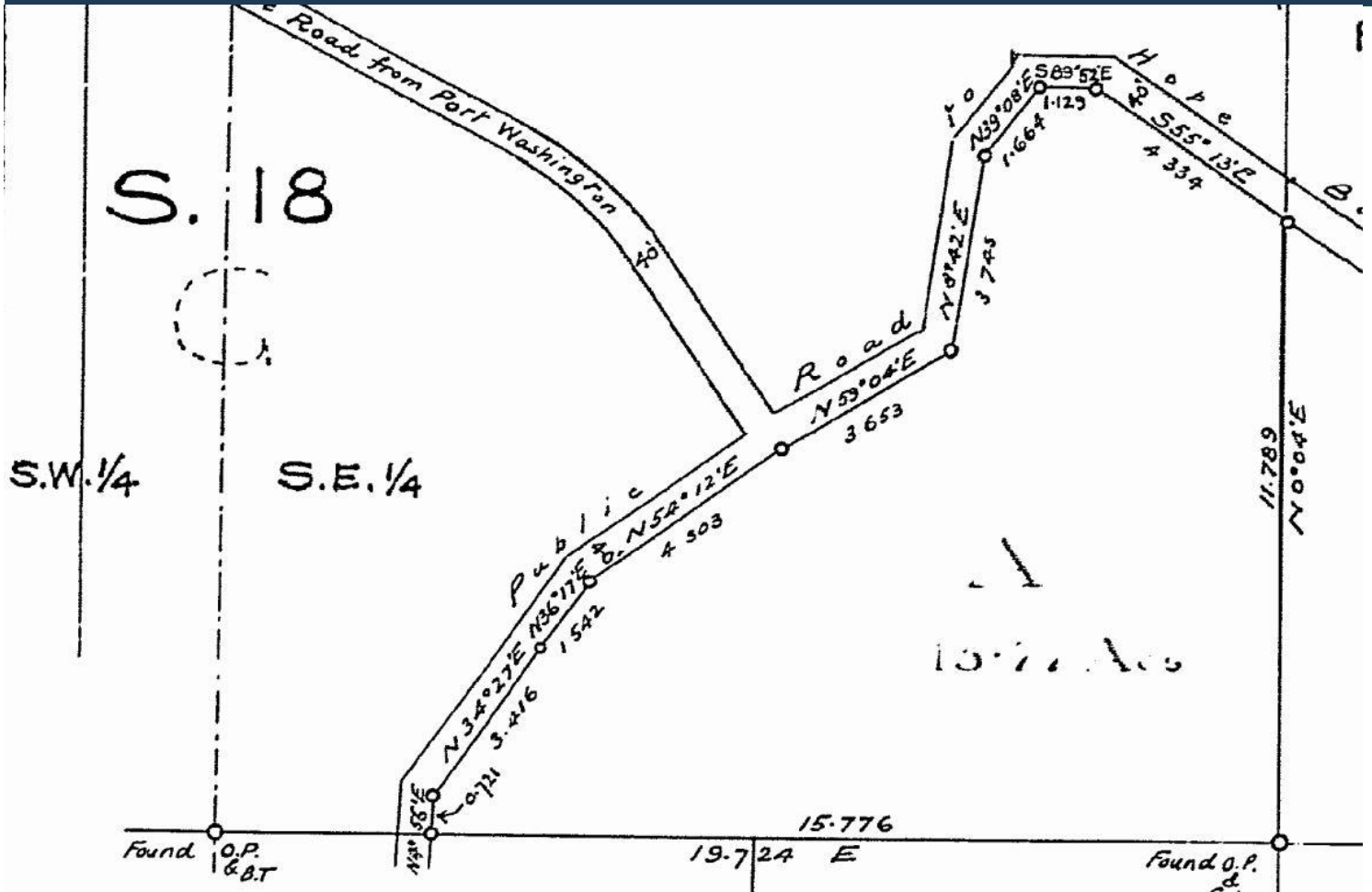
- Private
- Greenhouse
- Barn
- Riding Ring
- Pastures
- Fruit & nut trees



Hope Bay: 250-629-3166
Sidney: 250-656-5062
info@DocksideRealty.ca

Driftwood: 250-629-3383
Saturna: 250-539-2121
www.DocksideRealty.ca

Plot Plan and Aerial View

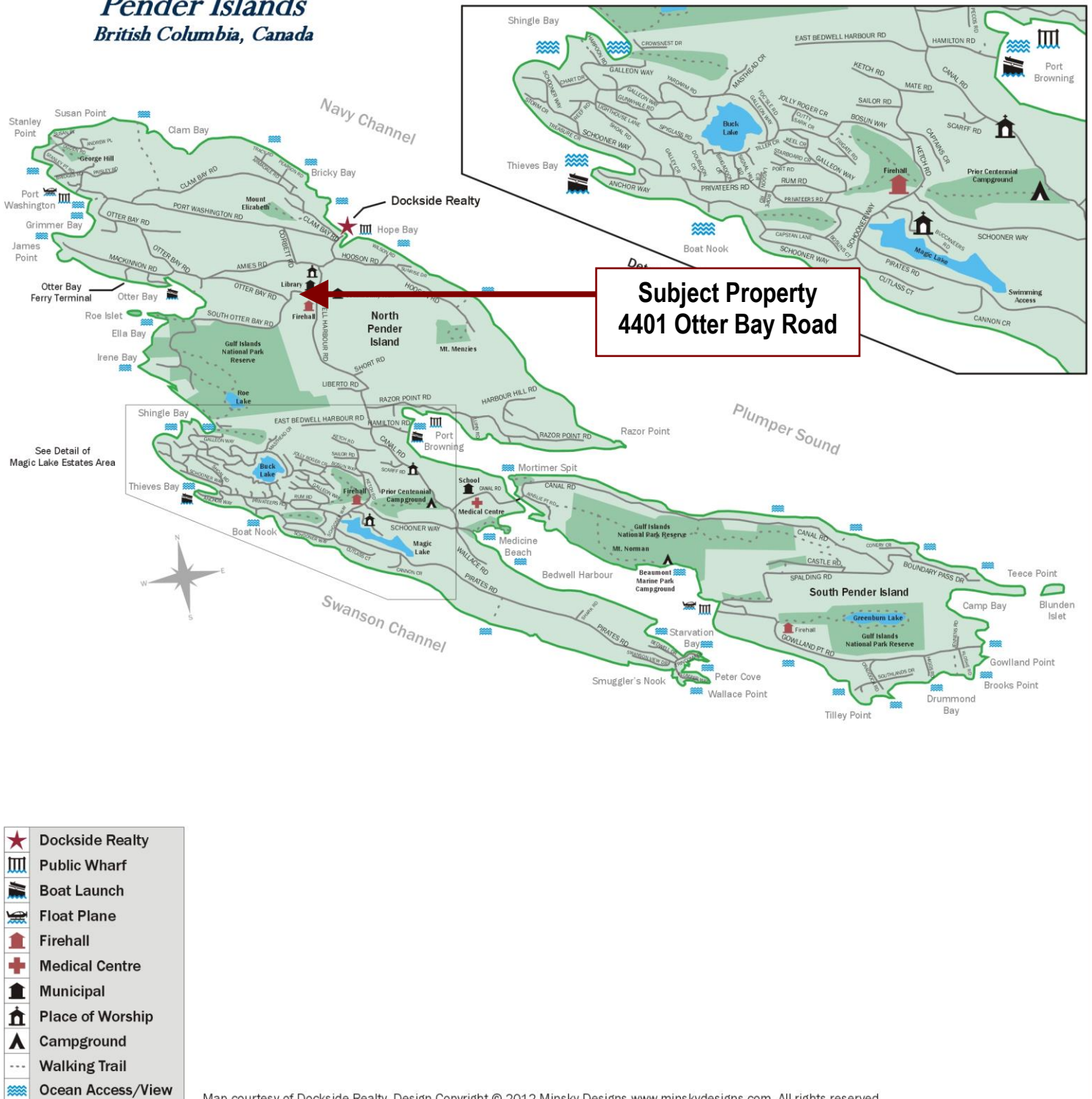


Hope Bay: 250-629-3166
 Sidney: 250-656-5062
 info@DocksiderRealty.ca

Driftwood: 250-629-3383
 Saturna: 250-539-2121
 www.DocksiderRealty.ca

Pender Islands Map

Pender Islands British Columbia, Canada



DISCLAIMER: While every effort is made to provide reliable information, Dockside Realty Ltd. makes no representations or warranties as to the accuracy of this brochure.

All measurements are approximate and the buyer is responsible for verifying all data provided.



Hope Bay: 250-629-3166
Sidney: 250-656-5062
info@DocksideRealty.ca

Driftwood: 250-629-3383
Saturna: 250-539-2121
www.DocksideRealty.ca