

Great Building Lot!



4720 Captains Crescent



This nicely treed lot has a roughed in driveway and is awaiting your building plans. This is an ideal spot in a great neighbourhood on a quiet no through road in Magic Lake Estates where property owners have exclusive access to Thieves Bay Marina. Located close to Lively Peak, Scarff Road Trail, and disc park trails. Services at road include municipal water, hydro, telephone, cable, and internet. Septic System required.



Hope Bay: 250-629-3166
Sidney: 250-656-5062
info@DocksideRealty.ca

Driftwood: 250-629-3383
Saturna: 250-539-2121
www.DocksideRealty.ca

Property Details



4720 Captains Crescent



Lot Acres: 0.51

Water: Municipal

Waste: Needs
Septic

Perc Test: No

Services: At lot line

Driveway:
Gravel/Dirt

Bldg Scheme: No

Lot Features:

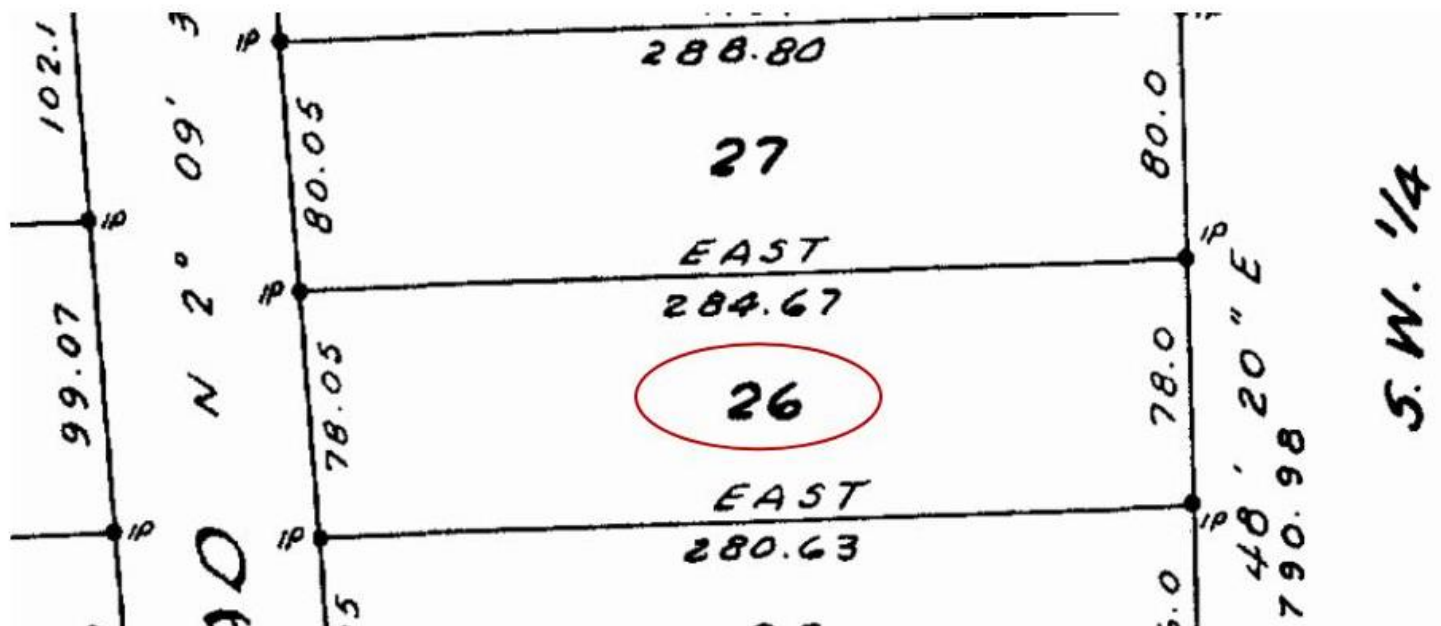
- no through road
- Quiet
- Treed
- Roughed in driveway



Hope Bay: 250-629-3166
Sidney: 250-656-5062
info@DocksideRealty.ca

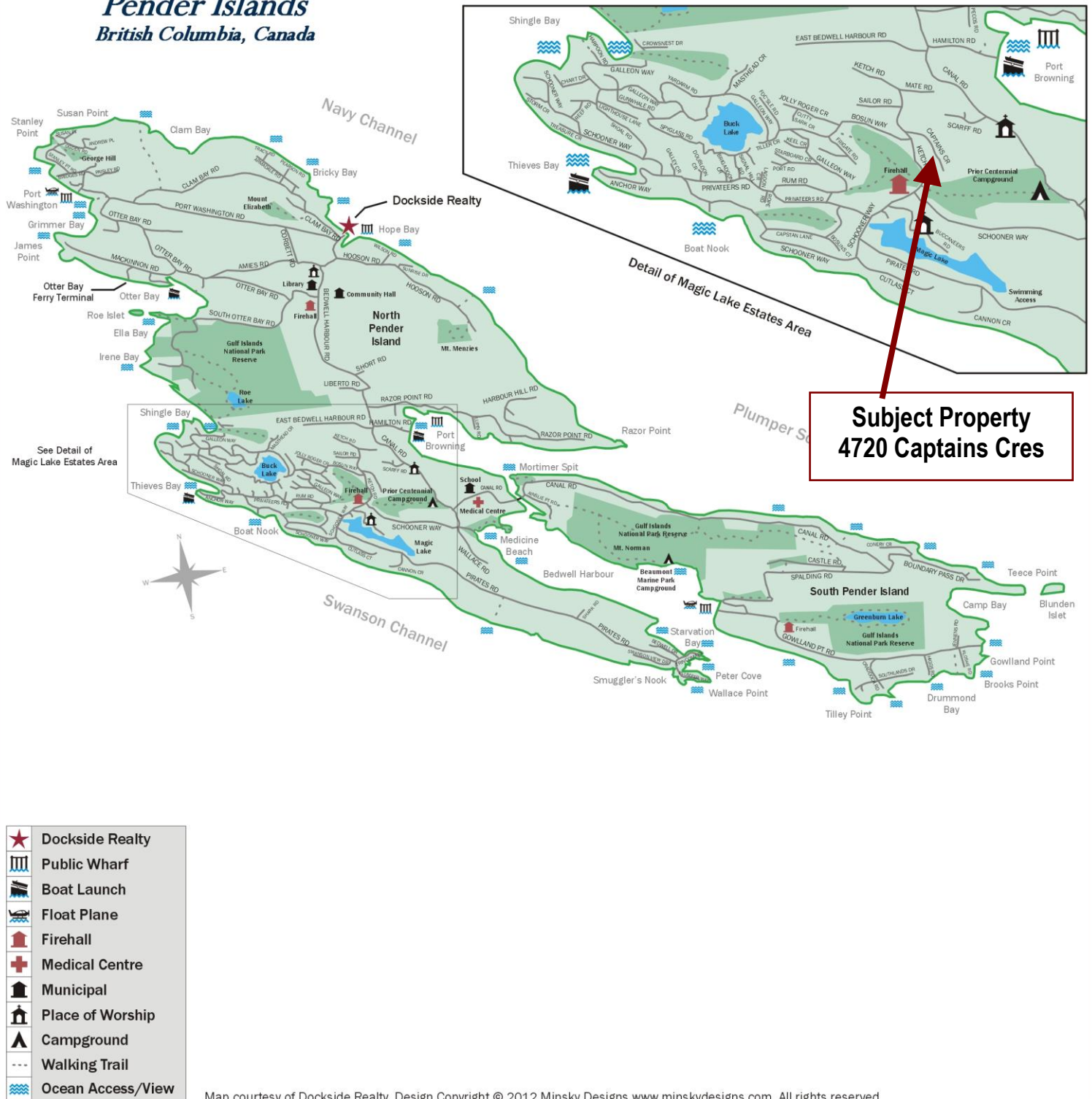
Driftwood: 250-629-3383
Saturna: 250-539-2121
www.DocksideRealty.ca

Plot Plan and Aerial View



Pender Islands Map

Pender Islands British Columbia, Canada



DISCLAIMER: While every effort is made to provide reliable information, Dockside Realty Ltd. makes no representations or warranties as to the accuracy of this brochure.

All measurements are approximate and the buyer is responsible for verifying all data provided.



Hope Bay: 250-629-3166
Sidney: 250-656-5062
info@DocksideRealty.ca

Driftwood: 250-629-3383
Saturna: 250-539-2121
www.DocksideRealty.ca