

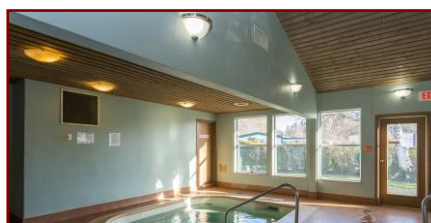
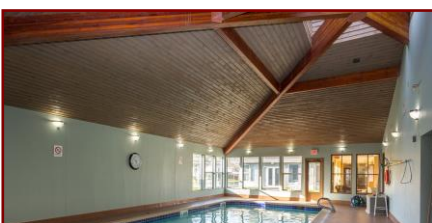
# Summergeate Village



9358 Village Way



*"Summergeate Village" is a sought-after complex that offers 55+ residents a safe and relaxed lifestyle and a sense of community. The amenities include an ozone pool and sauna, games room, library, workshop and community room. You also have the opportunity to take part in the many monthly activities that are available. Some features of this tastefully updated home include open concept kitchen, dining and living room making entertaining easy, large master bedroom with convenient 2-piece ensuite, large main bath, and a separate family room.*



SUZI JACK, \*PREC, LICENSED REALTOR®

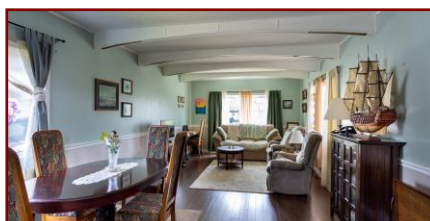
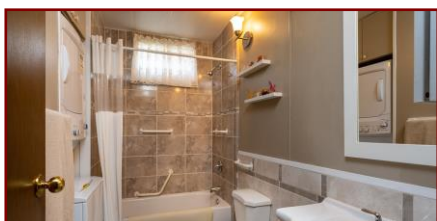
Office: 250-656-5062 Cell: 250-203-3919 [www.DocksideRealty.ca](http://www.DocksideRealty.ca)



# Property Details



9358 Village Way



**Year Built:** 1981

**Lot Acres:** 0.07

**Bedrooms:** 2

**Bathrooms:** 2

**Fin SqFt:** 1,075

**Unfin SqFt:** 0

**Bsmt:** Crawl Space

**Water:** Municipal

**Waste:** Sewer

**Foundation:**

Concrete Poured

**Roof:** Asphalt Shingle

**Ext Fin:** Aluminium, Cement Fiber Board

**Fuel:** Electric

**Heat:** Forced Air

**Shared Amenities:**

- Recreation centre
- Pool
- Hot Tub
- Billiards
- Library
- Workshop
- Low Strata Fees

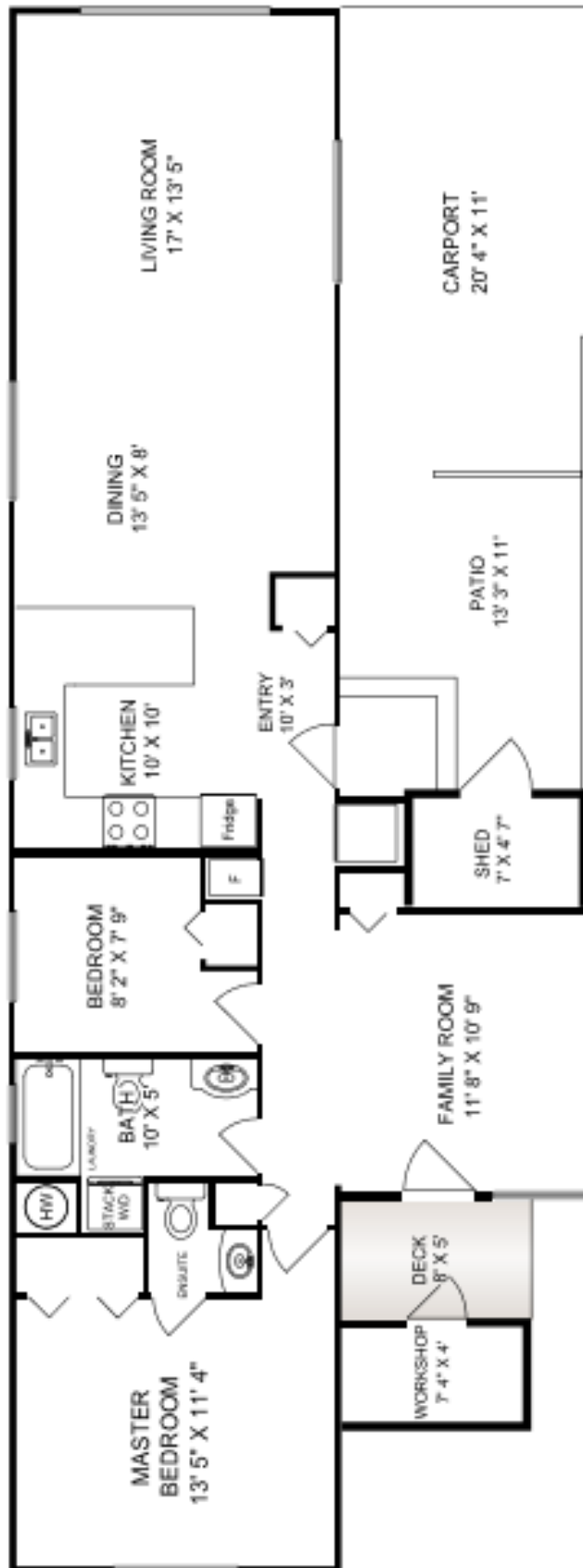


SUZI JACK, \*PREC, LICENSED REALTOR®

Office: 250-656-5062 Cell: 250-203-3919 [www.DocksideRealty.ca](http://www.DocksideRealty.ca)

# Floor Plans

9358 VILLAGE WAY



MAIN  
1075 SQ. FT.



FINISH	UNFINISH	TOTAL
SQ. FT.	SQ. FT.	SQ. FT.
MAIN	1075	1075
TOTAL	1875	1075
DECK	40	40
SHED	38	38
WORKSHOP	38	38

EXCLUSIVELY FOR SUZI JACK DOCKSIDE REALTY LTD.	
DATE: 20/2/19	
 <b>Island Measure</b> Residential and Commercial Floor Plans 250-656-5062 suz@islandmeasure.com	
REF # 0324	

SUZI JACK, \*PREC, LICENSED REALTOR®

Office: 250-656-5062 Cell: 250-203-3919 [www.DocksideRealty.ca](http://www.DocksideRealty.ca)





# Google Area Map

