

Sensational Shoreline!



9929 Southlands Drive



Pender Island paradise has 1.91 acres of sensational shoreline. The custom designed cedar home has been lovingly cared for and consists of 2BR on the main with a studio or 3rd BR on the upper level. Mexican ceramic tile in the kitchen with centre island and clerestory windows make this a great place to work and dine. Home has a new metal roof. Weathered wood adds to the quaint charm of the rustic country ambience. The 600sqft art studio has also been used as a guest house. The property has been called Whale Point for good reason, walk up to the bluff to see the San Jan Islands and watch the whales. This bluff also protects the house from those southeasterly winds. Discover solitude soon on sunny South Pender Island!



HEAD OFFICE: 250-629-3166 FAX: 250-629-3168
TOLL FREE: 1-866-629-3166 WEB: www.docksiderealty.ca

Property Details



9929 Southlands Drive



Year Built: 1983

Lot Acres: 1.91

Bedrooms: 3

Bathrooms: 2

Fin SqFt: 1,811

Unfin SqFt: 517

Bsmt: Crwl Space

Water: Drilled Well

Waste: Septic Field

Foundation:
Concrete Slab

Roof: Metal

Ext Fin: Wood

Fuel: Wood, Electric

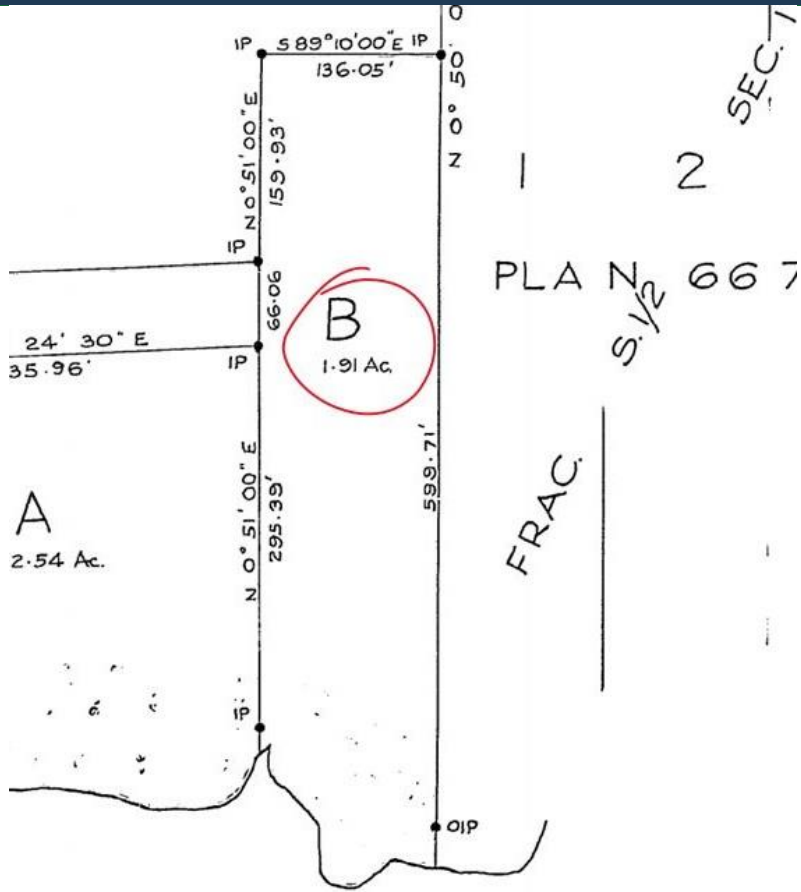
Heat: Wood Stove,
Baseboard

FP Location: Living
Room

Lot Features:

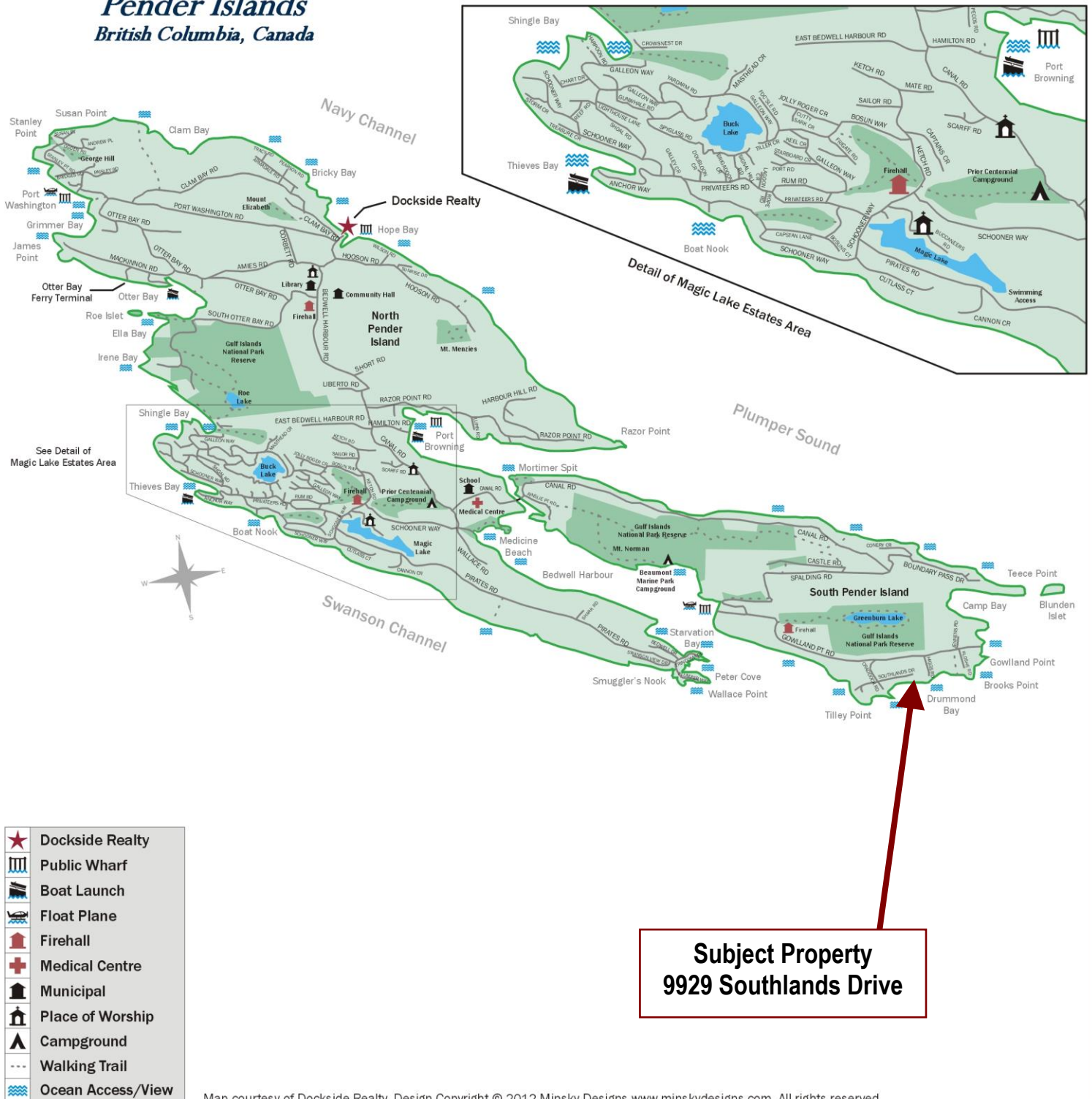
- Waterfront
- Fenced Yard
- Guest Accom.
- Level Entry
- Barn
- Private

Plot Plan and Aerial View



Pender Islands Map

Pender Islands British Columbia, Canada



DISCLAIMER: While every effort is made to provide reliable information, Dockside Realty Ltd. makes no representations or warranties as to the accuracy of this brochure. All measurements are approximate and the buyer is responsible for verifying all data provided.



HEAD OFFICE: 250-629-3166 FAX: 250-629-3168
TOLL FREE: 1-866-629-3166 WEB: www.docksiderealty.ca