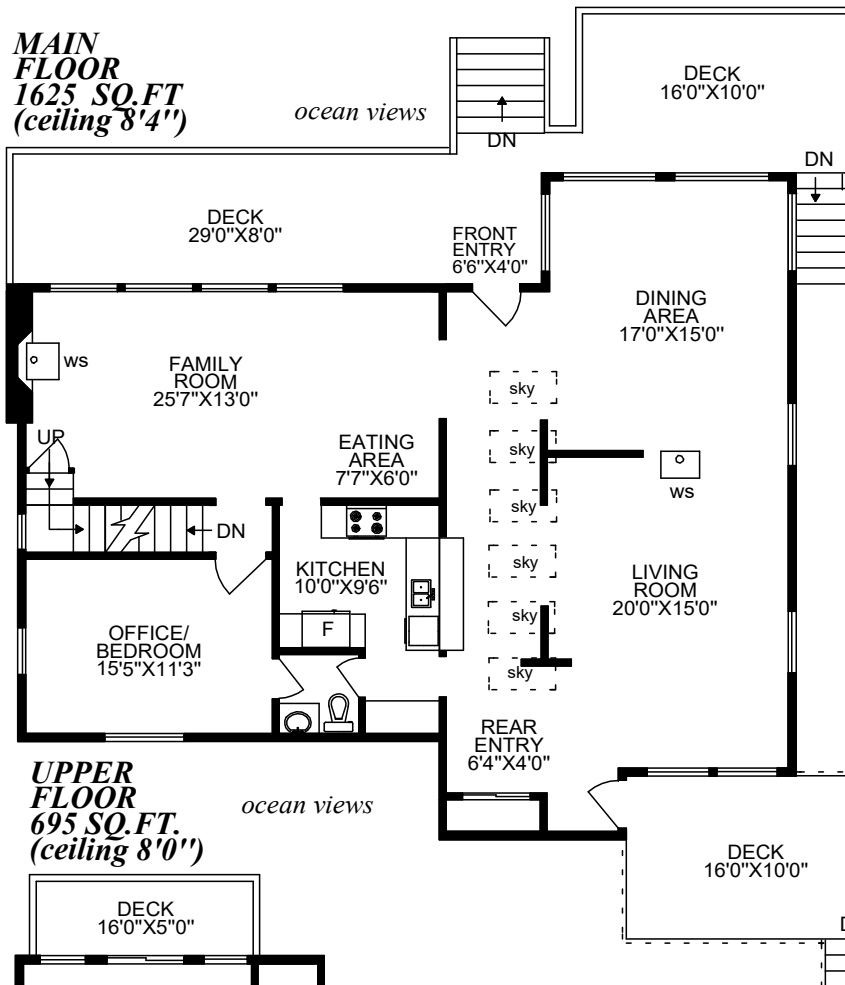


**3226 TRACY ROAD
PENDER ISLAND, BC**

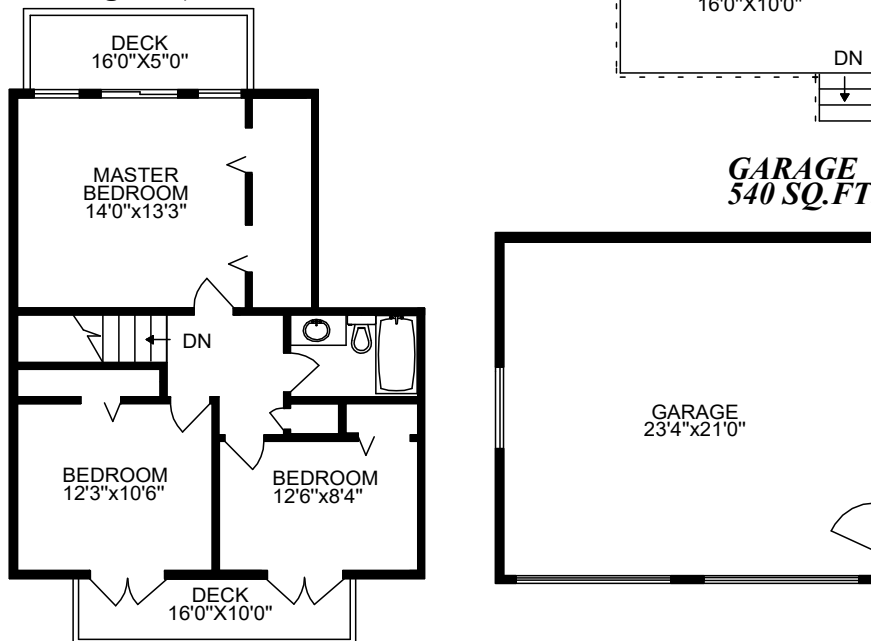
**PENDER ISLAND
REALTY
ROB SOUTHEY**

**PO BOX123
4605 Bedwell Harbour Rd
Pender Island, BC
PH. 250 629 3383
FAX 250 629 3311**

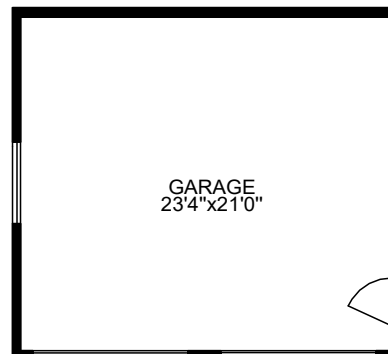
**MAIN
FLOOR
1625 SQ.FT
(ceiling 8'4")**



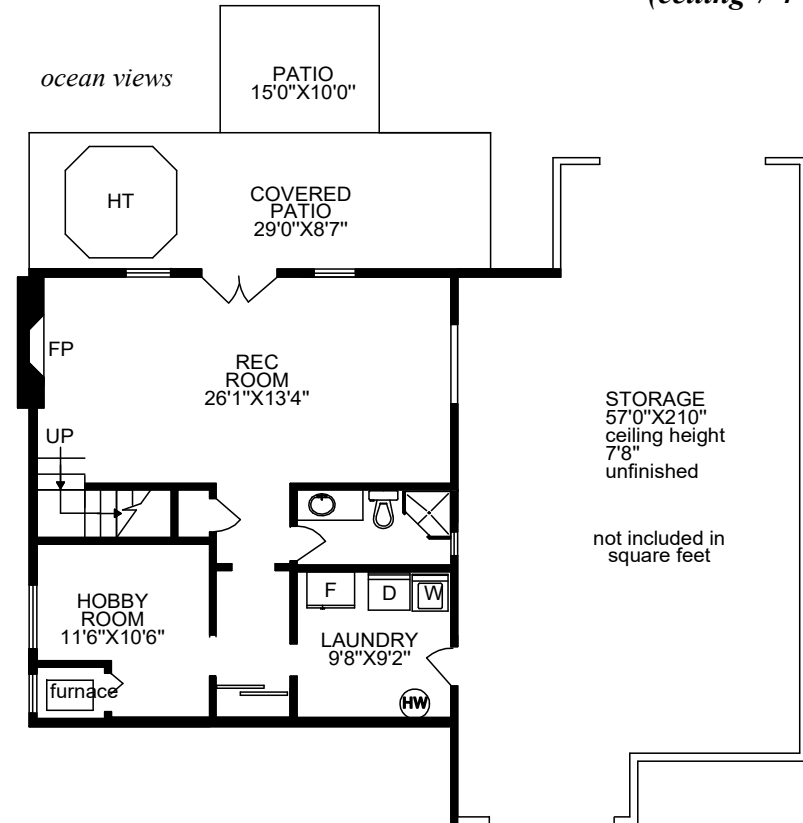
**UPPER
FLOOR
695 SQ.FT.
(ceiling 8'0")**



**GARAGE
540 SQ.FT.**



**LOWER
FLOOR
785 SQ.FT.
(ceiling 7'4")**



PREPARED FOR THE EXCLUSIVE USE OF
ROB SOUTHEY OF PENDER ISLAND REALTY

DATE MEASURED:
JULY 31, 2016

M METRIX
744-4022
FILE: 70263

FLOOR AREA ANALYSIS

	FINISH SQ. FT.	UNFIN. SQ. FT.	TOTALS SQ. FT.
UPPER	1045	0	1045
MAIN	1705	0	1705
TOTAL	2750	0	2750
OTHER		SQ. FT.	
DECKS/ PATIO		1015	
GARAGE		540	

