

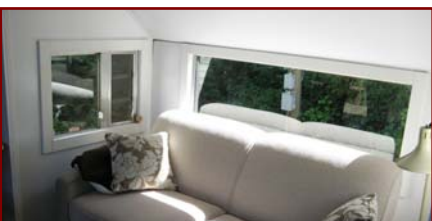
Your Own Beach!



2614 Chart Drive



Step onto your Own Beach frontage from this .96 acre waterfront property with fully functional 10 x 36 travel trailer for you to enjoy now while you think of building your dream home here in the future. Ideally located in Magic Lake Estates on Shingle Bay with numerous hiking trails, a Marina + a Tennis Court. Steps down to a private sandy cove where you can launch your kayak and watch the ferries. The trailer has been well maintained and recently renovated with 1 BR - 1 Bathroom, - Kitchen - sitting room and large deck (partly covered), and has a septic field and is hooked up to water. Your own Pender Island Retreat awaits you.



Property Details



2614 Chart Drive



Year Built: -
Lot Acres: 0.96 acre

Bedrooms: 1

Bathrooms: 1

Fin SqFt: 10'x36'

Unfin SqFt: -

Water: Municipal

Waste: Septic Tank

*Services: Electricity,
Water*

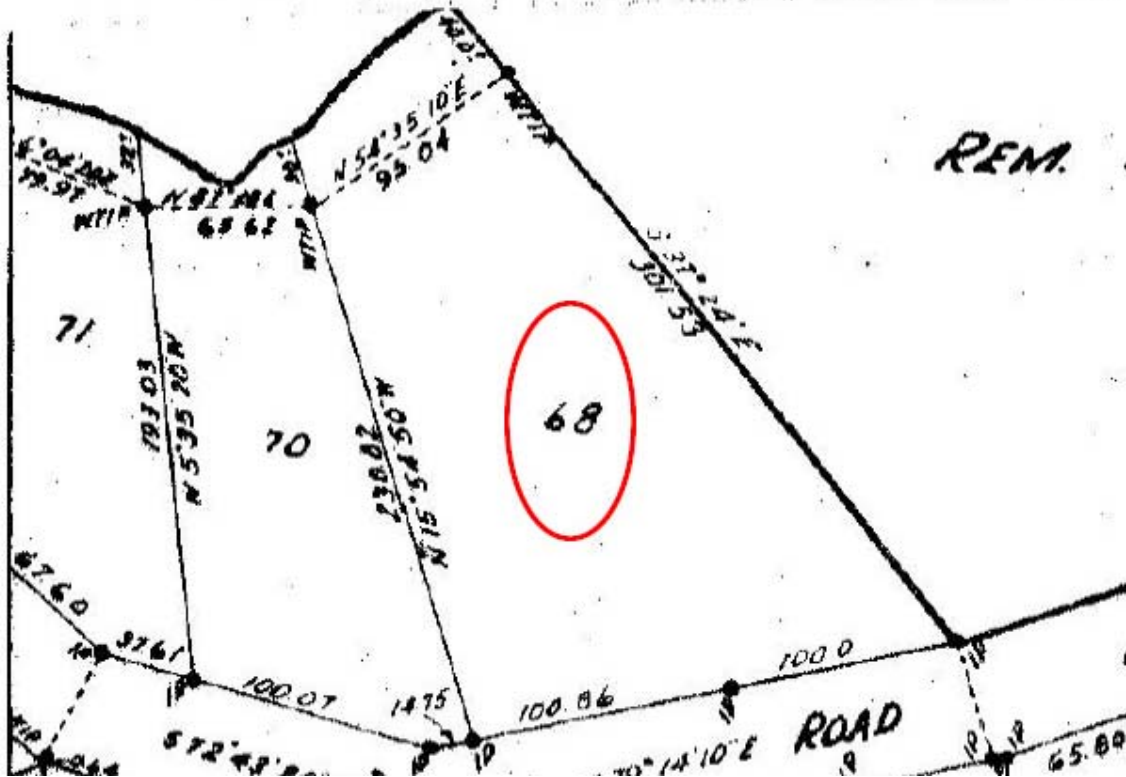
*Driveway:
Gravel/Dirt*

Bldg Scheme: No

Lot Features:

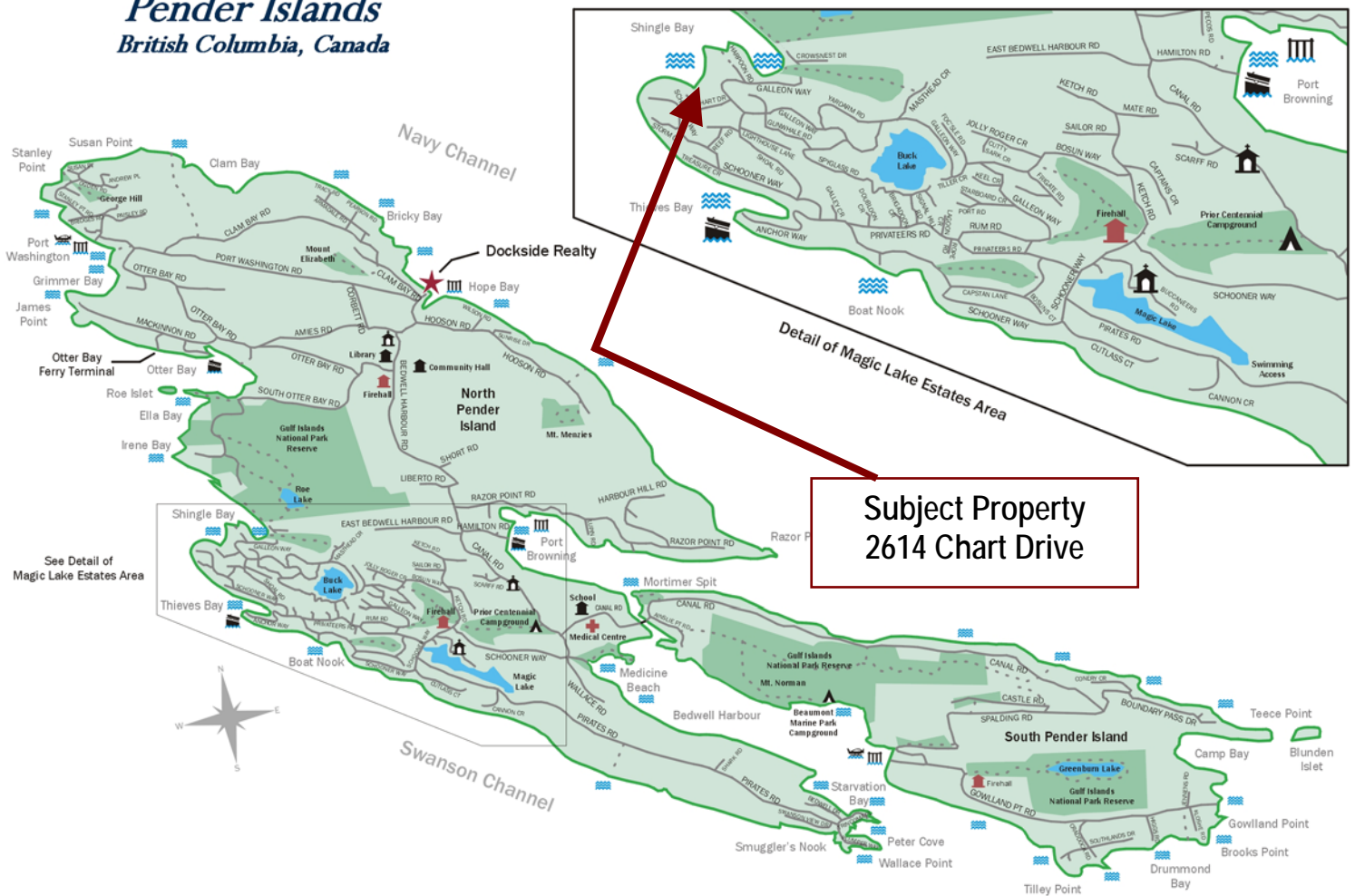
- Waterfront
- Steps to beach
- Privacy
- Ocean Views

Plot Plan and Aerial View



Pender Islands Map

Pender Islands British Columbia, Canada



**Subject Property
2614 Chart Drive**

- Docksider Realty
- Public Wharf
- Boat Launch
- Float Plane
- Firehall
- Medical Centre
- Municipal
- Place of Worship
- Campground
- Walking Trail
- Ocean Access/View

Map courtesy of Docksider Realty. Design Copyright © 2012 Minsky Designs www.minskydesigns.com. All rights reserved.

DISCLAIMER: While every effort is made to provide reliable information, Docksider Realty Ltd. makes no representations or warranties as to the accuracy of this brochure.

All measurements are approximate and the buyer is responsible for verifying all data provided.



HEAD OFFICE: 250-629-3166 FAX: 250-629-3168
TOLL FREE: 1-866-629-3166 WEB: www.docksiderealty.ca