

Waterfront Cabin!



120 Payne Road

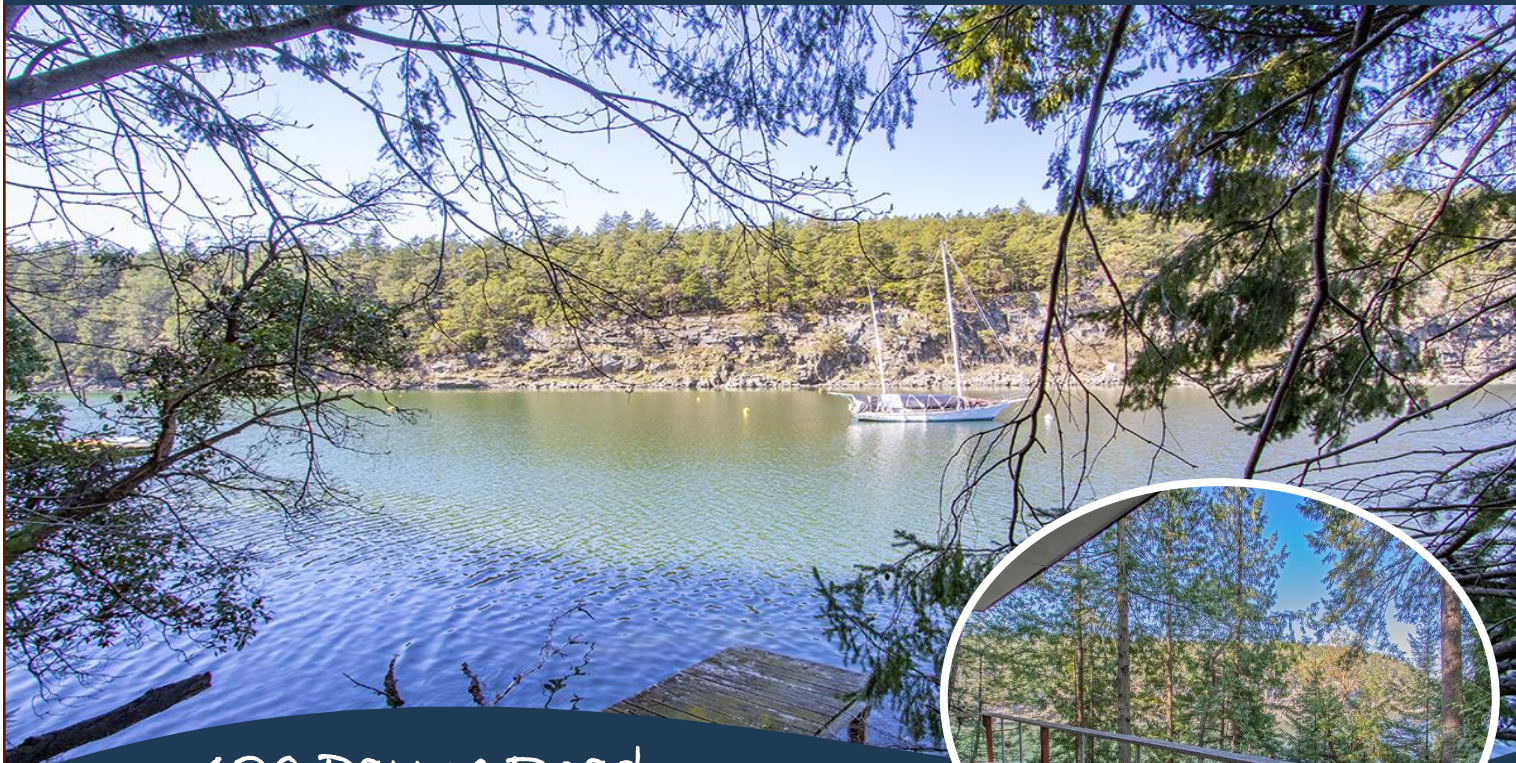


Rustic Fishing Cabin tucked away in Boot Cove. Approximately 1/2 acre of waterfront property within walking distance to the ferry landing with a "mature" cabin. If you are handy, this could be a rewarding project for you. It is connected to electricity and water system. Has a composting toilet as well as an outhouse. A septic system has been roughed in but has never been completed to a functional stage. There are aging stairs to the shoreline with a fishing pier at the end. This is being offered for sale "AS-IS". Did I mention Waterfront??



MICHAEL VAUTOUR, LICENSED REALTOR®
Office: 250-539-2121 Cell: 250-818-3919 www.SaturnaRealty.ca

Property Details



120 Payne Road



Year Built: 1956

Lot Acres: 0.49

Bedrooms: 1

Bathrooms: 1

Fin SqFt: 501

Unfin SqFt: 327

Bsmt: Yes

Bsmt Ht:

Water: Municipal

Waste: Other

Foundation:

Concrete Poured

Roof: Metal

Ext Fin: Wood

Fuel: Electric

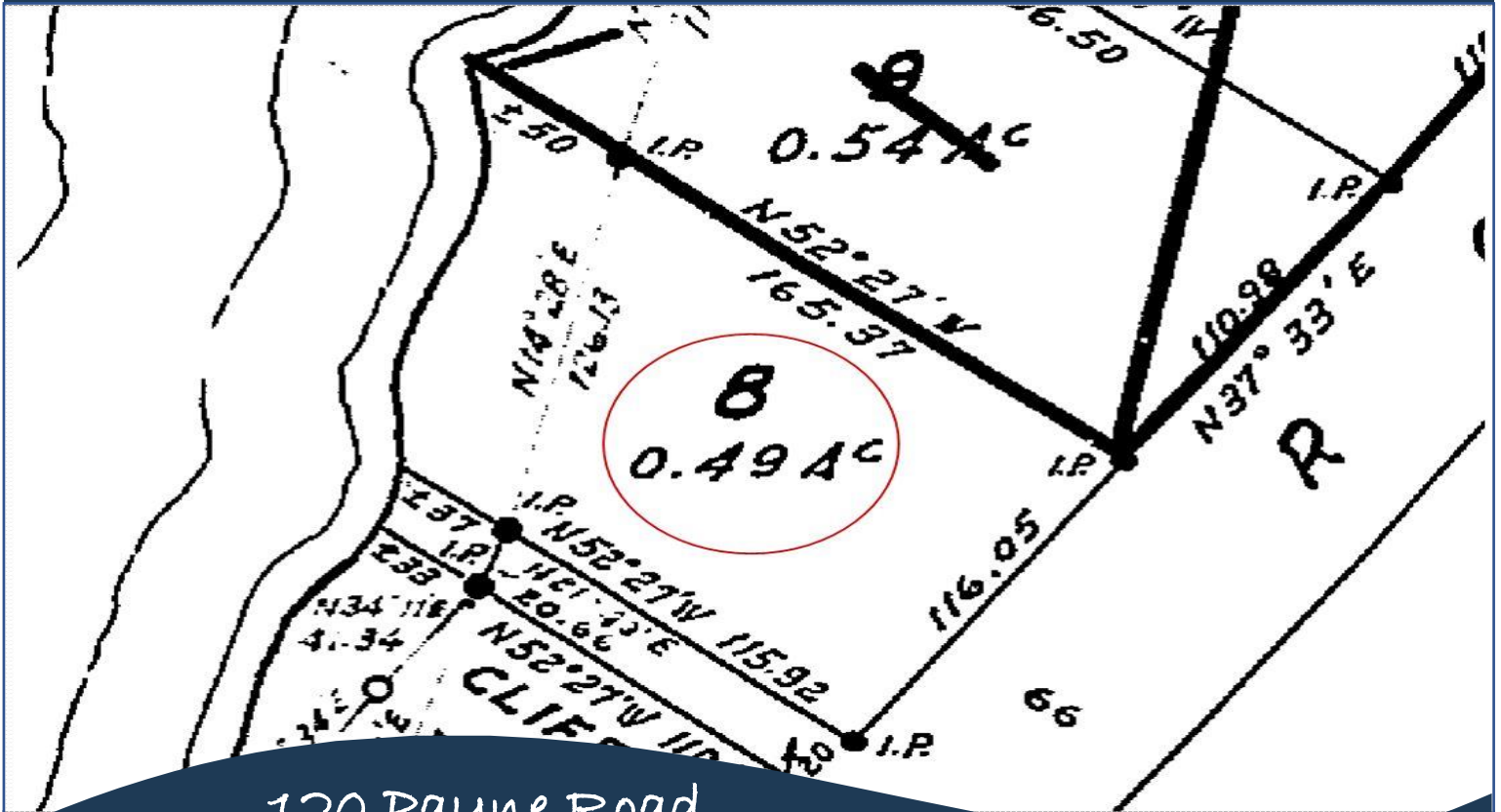
Heat: Wood Stove

FP Location: Great Room

Lot Features:

- Waterfront
- Private Property
- West facing
- Treed

Plot Plan and Aerial View



120 Payne Road

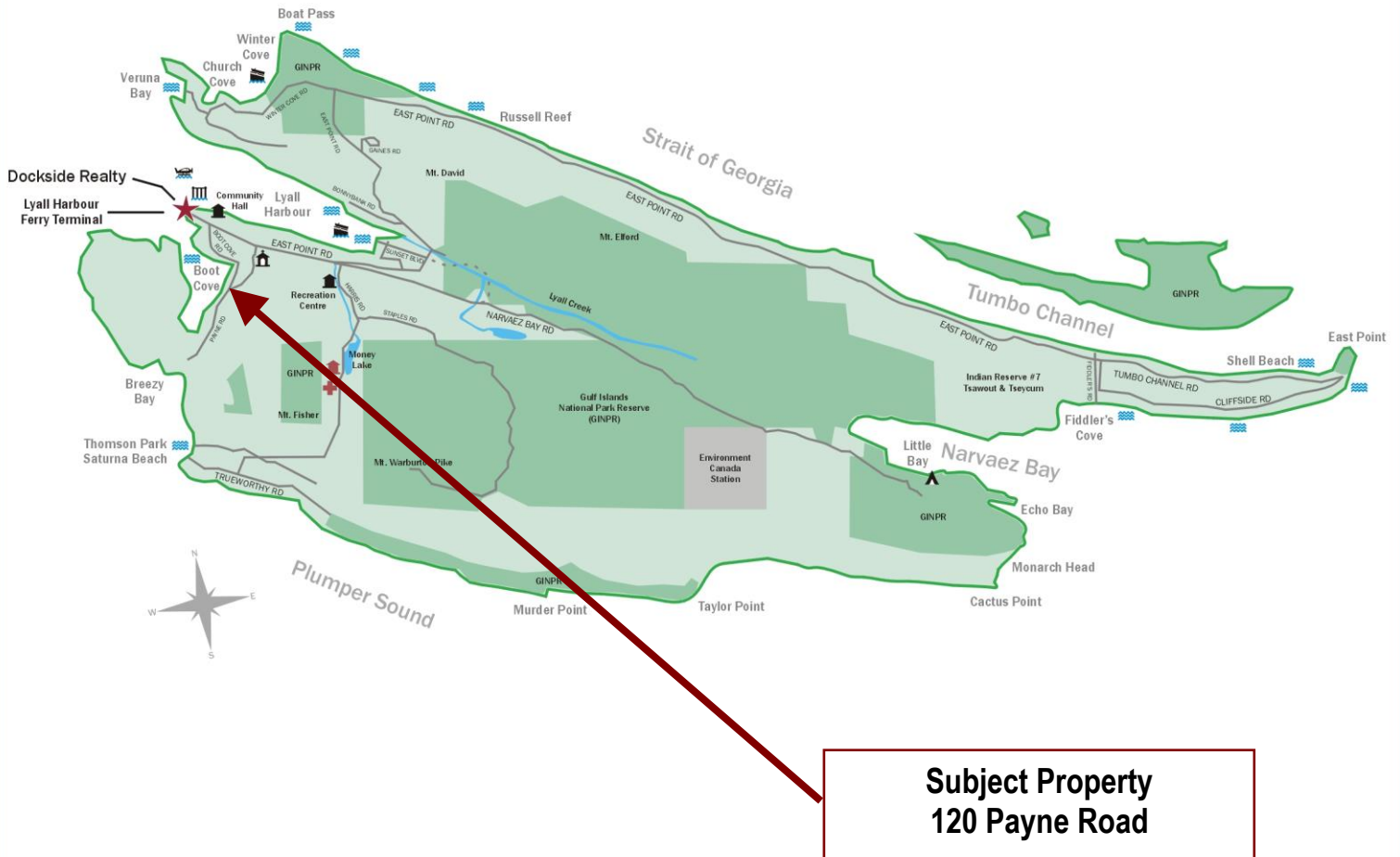


MICHAEL VAUTOUR, LICENSED REALTOR®

Office: 250-539-2121 Cell: 250-818-3919 www.SaturnaRealty.ca

Google Area Map

Saturna Island British Columbia, Canada



Map courtesy of Dockside Realty. Design Copyright © 2012 Minsky Designs www.minskydesigns.com. All rights reserved.

DISCLAIMER: While every effort is made to provide reliable information, Dockside Realty Ltd. makes no representations or warranties as to the accuracy of this brochure.

All measurements are approximate and the buyer is responsible for verifying all data provided.



MICHAEL VAUTOUR, LICENSED REALTOR®
Office: 250-539-2121 Cell: 250-818-3919 www.SaturnaRealty.ca