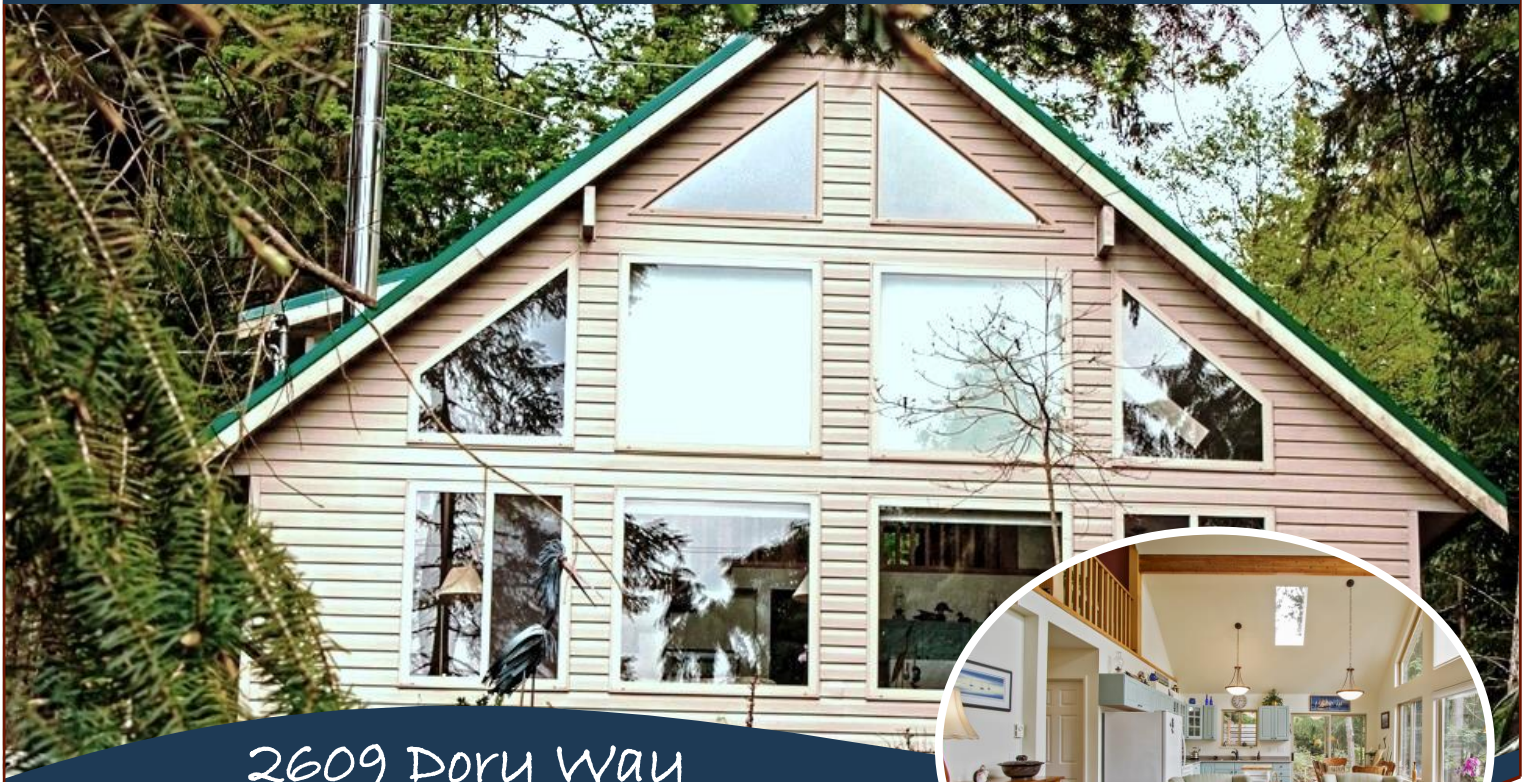
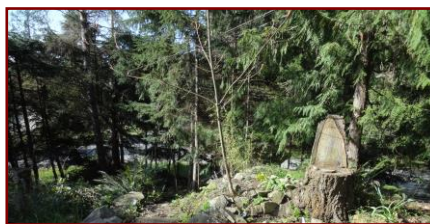


# Island Charmer



2609 Dory Way



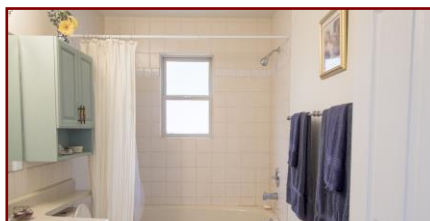
***Immaculate and Impressive! This lovely property, located near Shingle Bay on Pender Island, is extremely peaceful & private. The open plan home is approximately 1436 sqft., with 3BR and large lofted MB suite. A skylight & floor to ceiling windows invite the sunlight in. Featuring vaulted ceilings, melamine kitchen cabinets, ceramic tile floor in kitchen & bathroom, a large soaker tub & impressive use of wood for railings & beams. New washer-dryer and airtight woodstove. Easy to heat -easy to maintain and very easy to enjoy this home. Additional lower storage room with full concrete flooring could be finished to add living space. All this on an easy care corner lot. Let the island life begin!***



# Property Details



2609 Dory Way



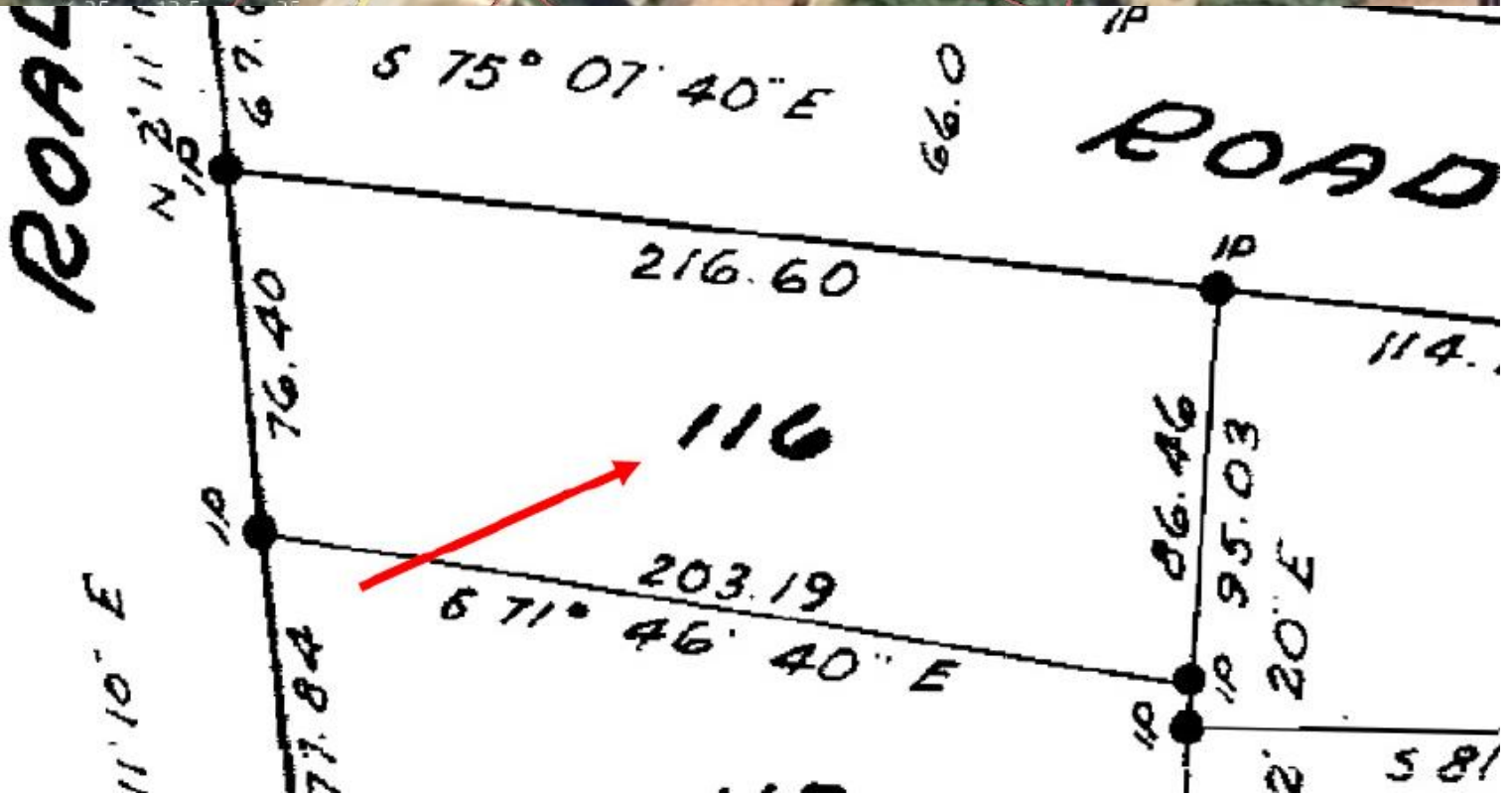
**Year Built:** 1994  
**Lot Acres:** 0.4 acre  
**Bedrooms:** 2  
**Bathrooms:** 1  
**Fin SqFt:** 1,436  
**Unfin SqFt:** 598  
**Bsmt:** Partial  
**Bsmt Height:** 7 ft  
**Water:** Municipal  
**Waste:** Septic Field

**Foundation:** Concrete Poured  
**Roof:** Asphalt  
**Ext Fin:** Vinyl  
**Fuel:** Electric  
**Heat:** Baseboard  
**Lot Features:**

- Private
- Corner Lot
- Low Maintenance
- Treed

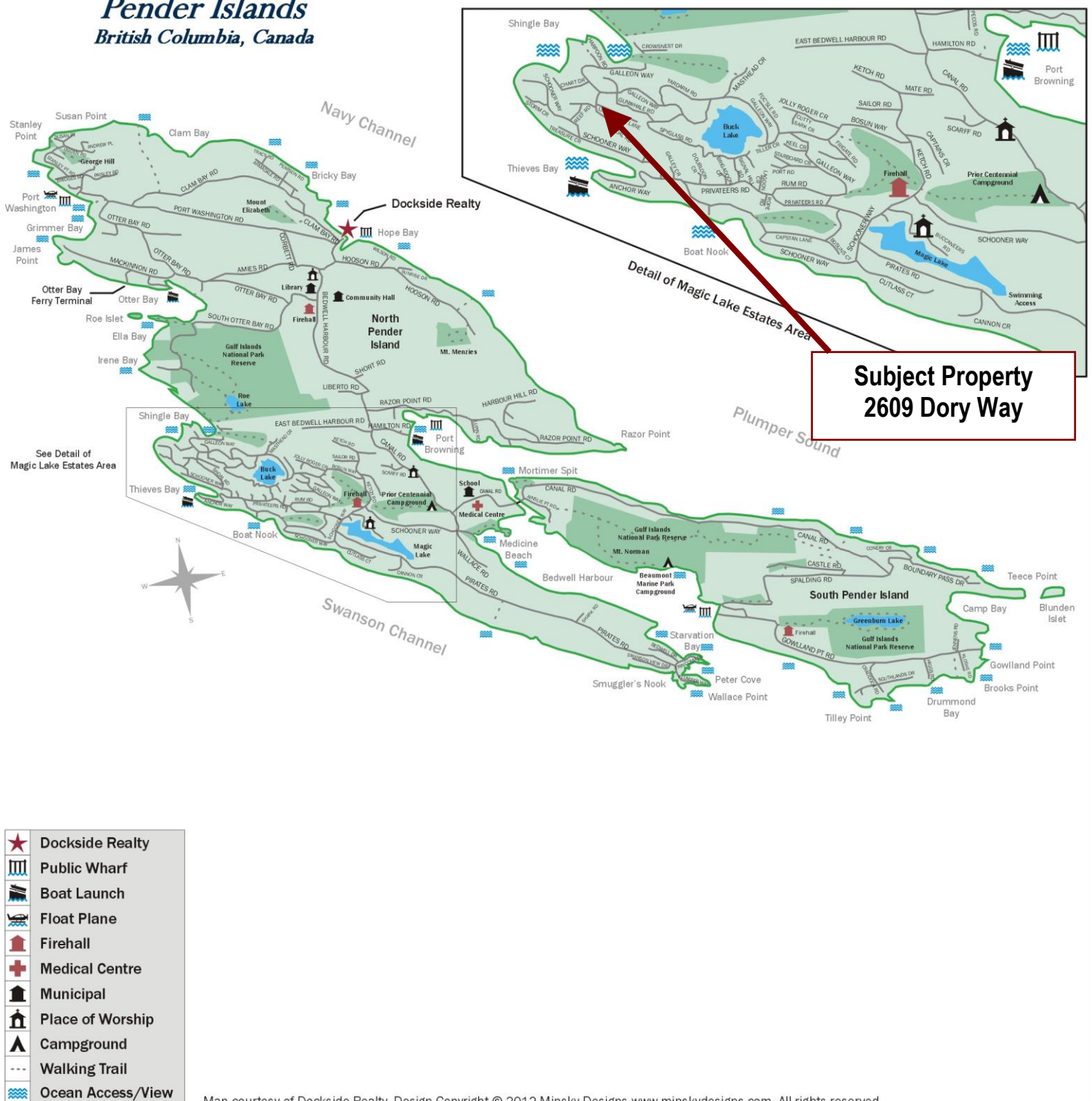


# Plot Plan and Aerial View



# Pender Islands Map

## Pender Islands British Columbia, Canada



**DISCLAIMER:** While every effort is made to provide reliable information, Docks Realty Ltd. makes no representations or warranties as to the accuracy of this brochure.

All measurements are approximate and the buyer is responsible for verifying all data provided.



**HEAD OFFICE: 250-629-3166 FAX: 250-629-3168**  
**TOLL FREE: 1-866-629-3166 WEB: www.docksiderealty.ca**