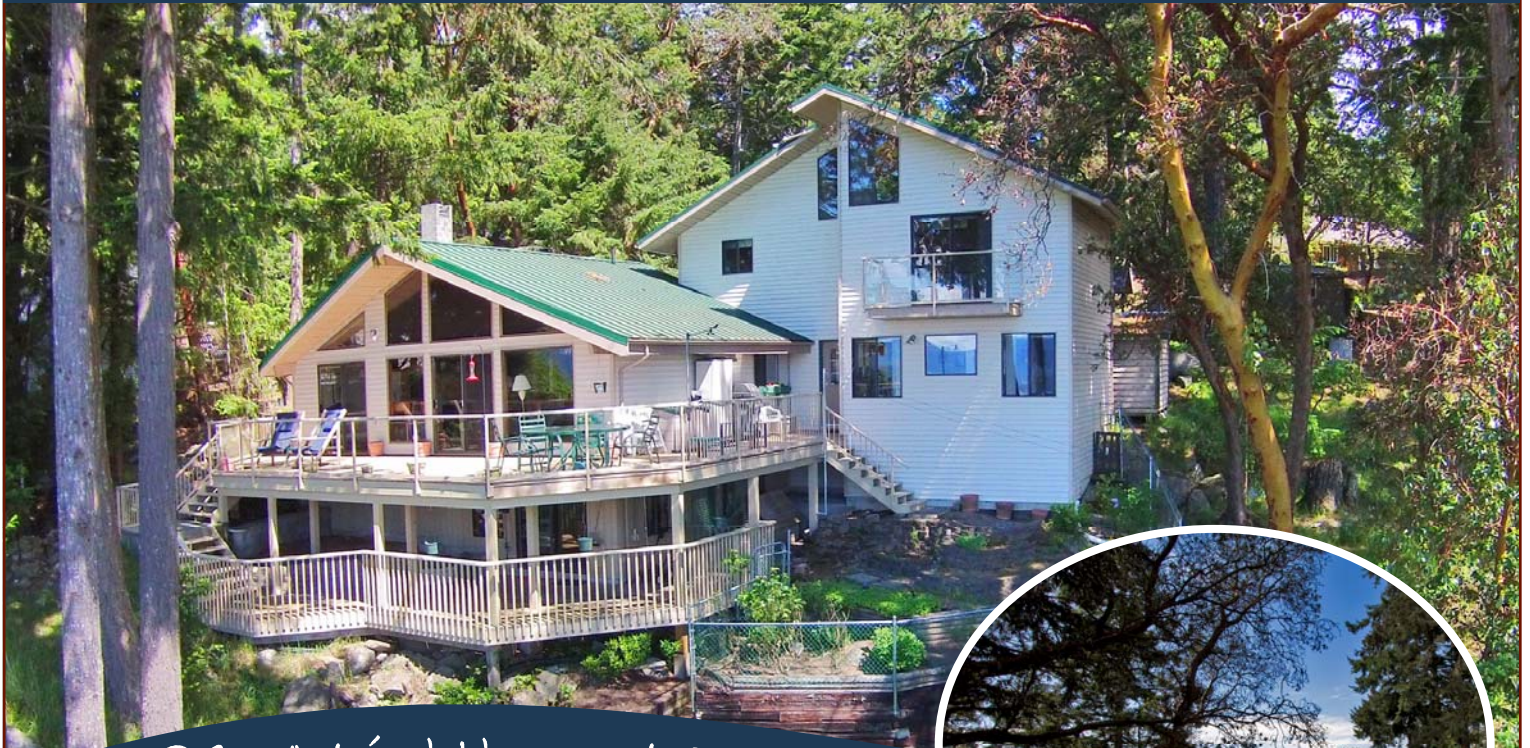
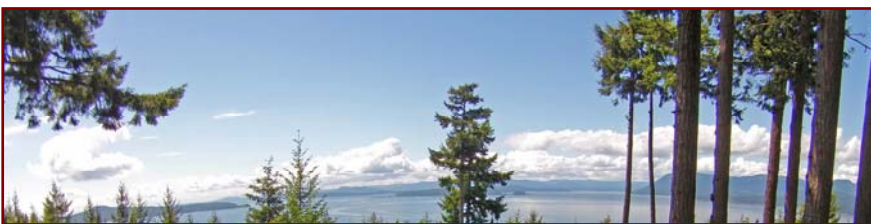


Top of the World SW Ocean Views!



2634 Lighthouse Lane

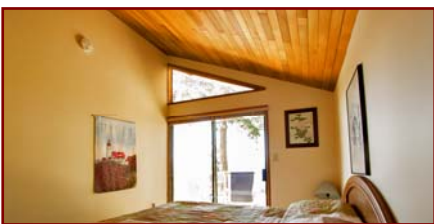


Tucked away at the Top of the World with Stunning SW Ocean Views. This approx 2000sq ft 3+BR 3BA Custom built home has been completely renovated in 1999 - 2002 with new addition seems "like a newer home". The upper level is the MB suite & en-suite. Ceramic Tiles enhance the newly Updated Kitchen (2014) & Main BA. Family RM offers extra sleeping or great office space. Open Plan Kitchen-Living-Dining area boast Vaulted Cedar Ceilings, Prow Shaped Floor to Ceiling Windows-Kitchen Island & more Amazing Ocean Views! Sliding doors to newly surfaced Dura deck with glassed in railing to capture every inch of the Spectacular Scenery! Nothing is missing here! Paved drive. Approx USD \$429

Property Details



2634 Lighthouse Lane



Year Completed:

Lot Acres: 0.82

Bedrooms: 3

Bathrooms: 2.5

Fin SqFt: 2,000

Unfin SqFt: 300

Bsmt: partial

Water: Municipal

Waste: Septic Field

Foundation:

Concrete Poured

Roof: Metal

Ext Fin: Vinyl Siding

Fuel: Propane,
Electric

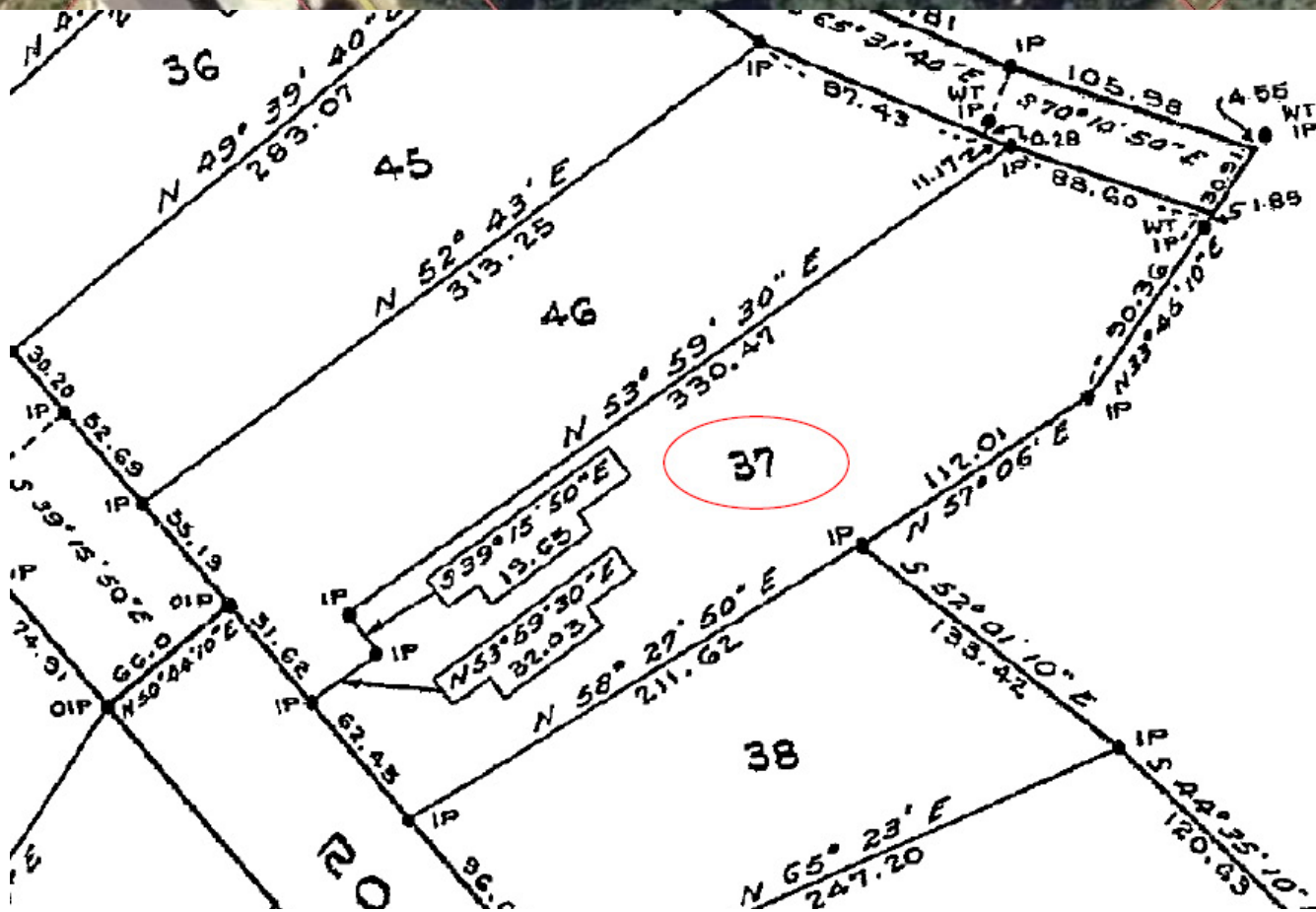
Heat: Propane
Fireplace, Baseboard

FP Location: Living
Room

Lot Features:

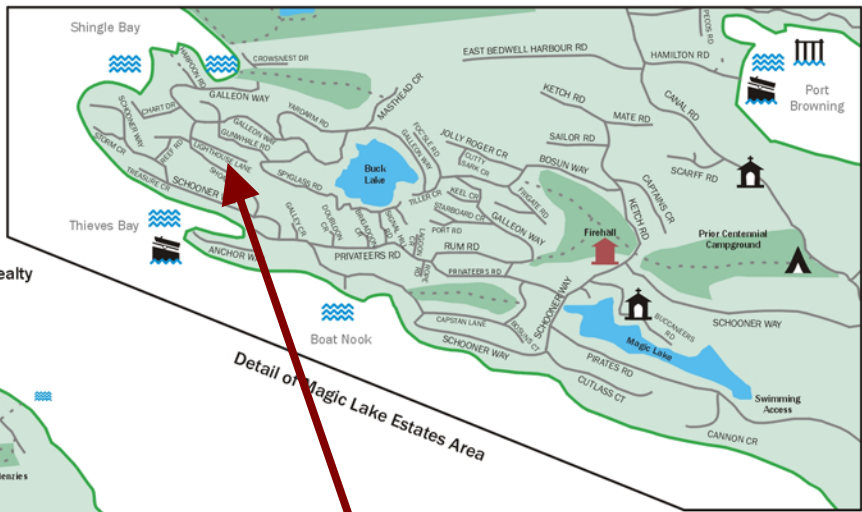
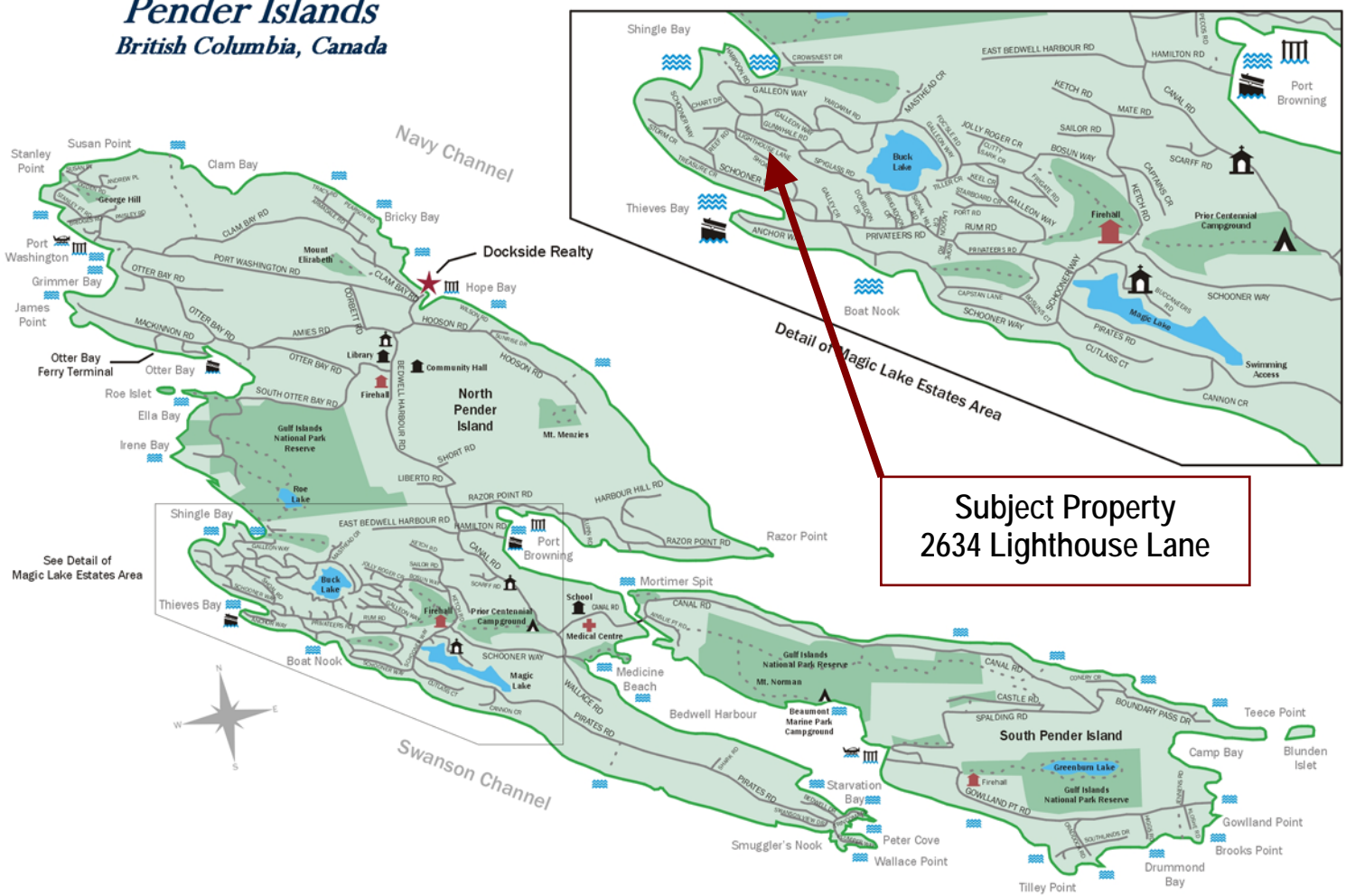
- Ocean View
- Deck
- Fenced Yard

Plot Plan and Aerial View



Pender Islands Map

Pender Islands British Columbia, Canada



Subject Property
2634 Lighthouse Lane

- Dockside Realty
- Public Wharf
- Boat Launch
- Float Plane
- Firehall
- Medical Centre
- Municipal
- Place of Worship
- Campground
- Walking Trail
- Ocean Access/View

Map courtesy of Dockside Realty. Design Copyright © 2012 Minsky Designs www.minskydesigns.com. All rights reserved.

DISCLAIMER: While every effort is made to provide reliable information, Dockside Realty Ltd. makes no representations or warranties as to the accuracy of this brochure.

All measurements are approximate and the buyer is responsible for verifying all data provided.



HEAD OFFICE: 250-629-3166 FAX: 250-629-3168
TOLL FREE: 1-866-629-3166 WEB: www.docksiderealty.ca