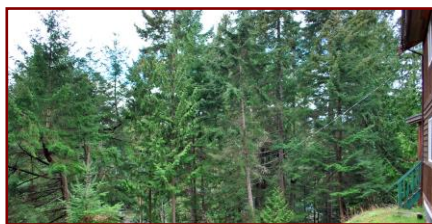


Calling All Carpenters



3600 Foc'sle Road



Here's an opportunity to get your creative juices flowing. One where you can add value while creating your own piece of Island heaven. The 4 BR, 2 BA, approximately 1950 sq ft two level home is currently at lock up. The electrical final has been submitted. Some fixtures, flooring & building materials are included. Sold "as is where is". This is a very private, sunny, elevated 0.62 acre lot, at the end of a no thru street. All permits were initially taken out & the local CRD building inspector has indicated it should be fairly straightforward to take this project to completion. The price is right, well below the 2016 Tax Assessment of \$278,700. A great time to get into the market in the Gulf Islands & escape the city!

Property Details



3600 Foc'sle Road



Year Completed:
2006

Lot Acres: 0.62
acres

Bedrooms: 4

Bathrooms: 2

Fin SqFt: 1950

Unfin SqFt: 0

Bsmt Height: 3 ft

Water: Municipal

Waste: Sewer

Foundation:
Concrete Poured

Roof: Asphalt
Shingle

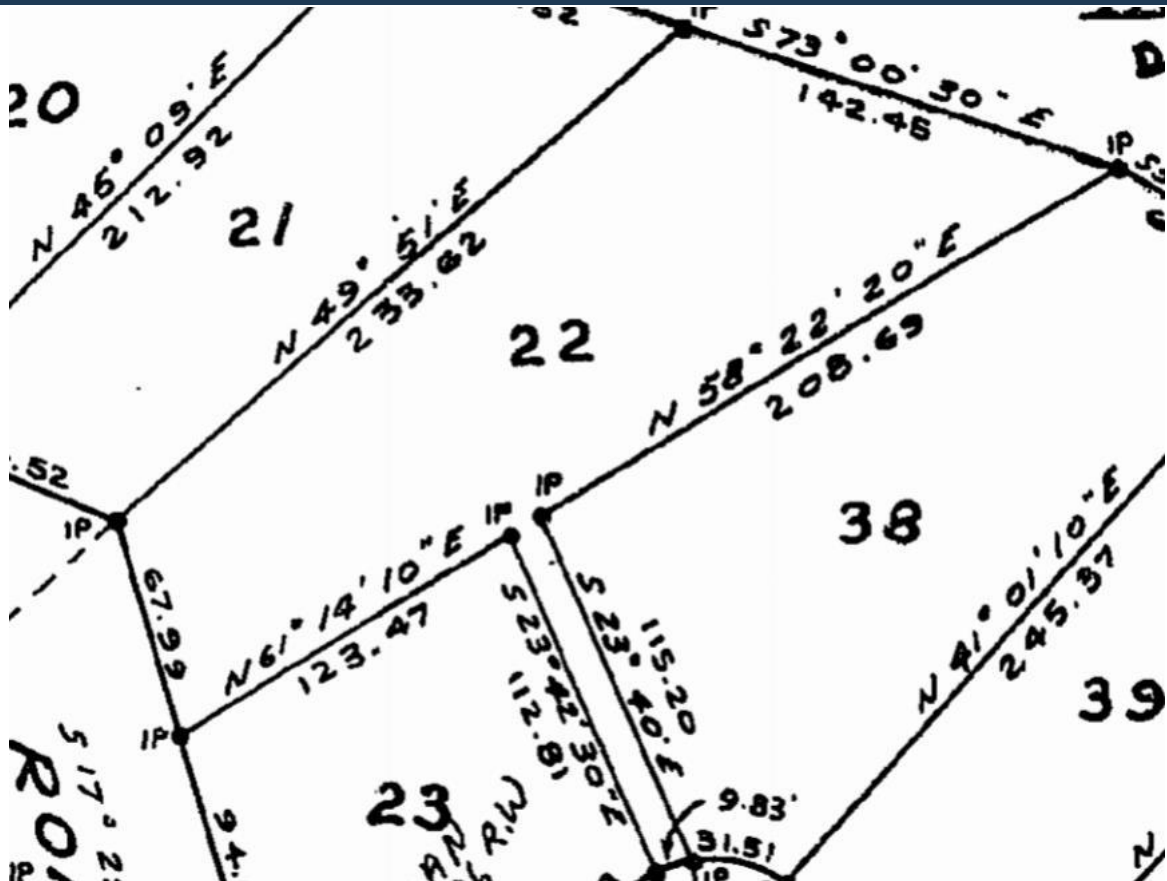
Ext Fin: Wood

Fuel: Electric

Heat: Baseboard

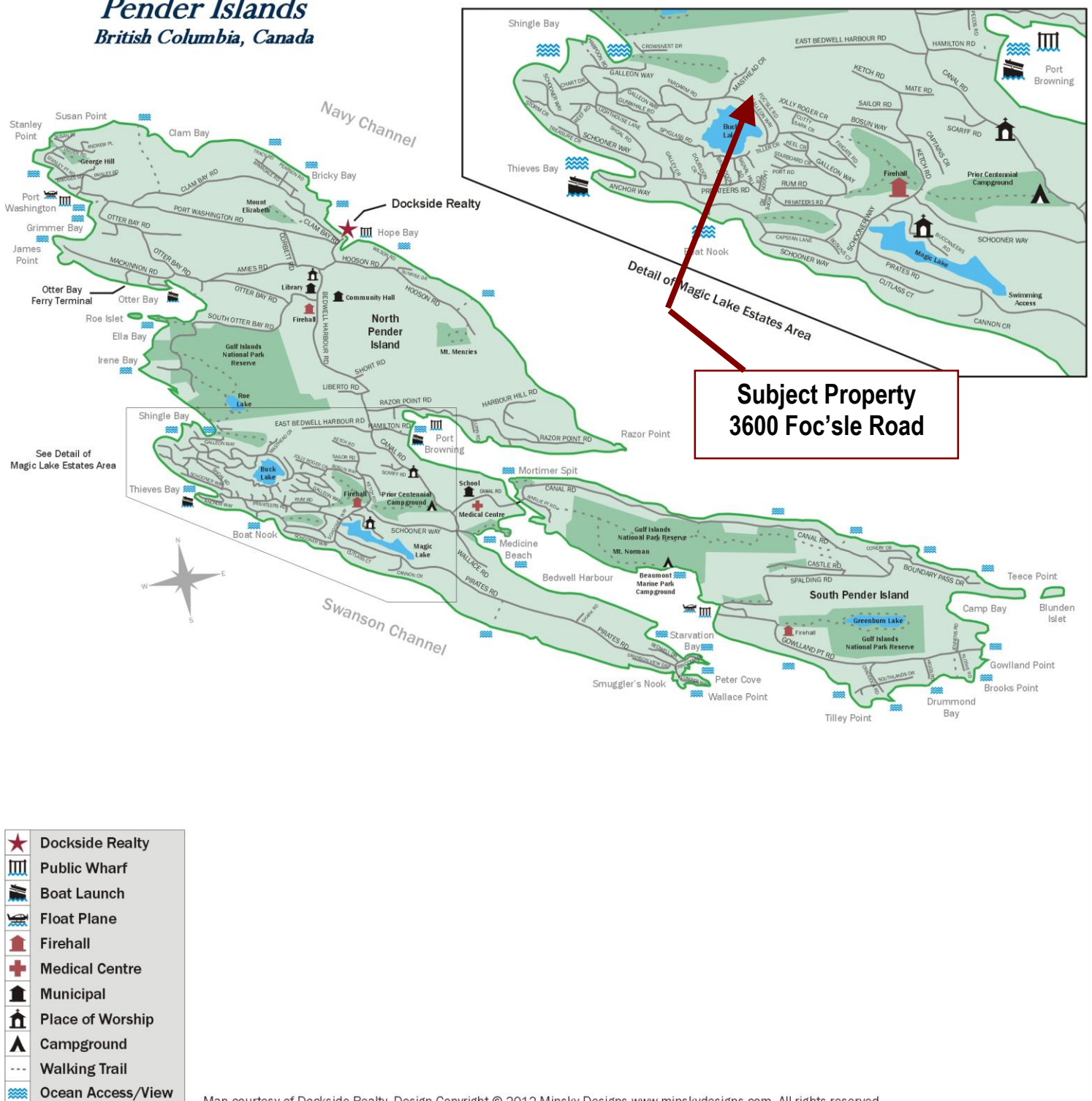
Lot Features:
- Very Private
- Sunny

Plot Plan and Aerial View



Pender Islands Map

Pender Islands British Columbia, Canada



DISCLAIMER: While every effort is made to provide reliable information, Dockside Realty Ltd. makes no representations or warranties as to the accuracy of this brochure.

All measurements are approximate and the buyer is responsible for verifying all data provided.



HEAD OFFICE: 250-629-3166 FAX: 250-629-3168
TOLL FREE: 1-866-629-3166 WEB: www.docksiderealty.ca