

# Ocean Front Dreams!



4200 Armadale Rd



*Are you ready to make your ocean front dreams come true? This property is ready to go, with a driveway in and your choice of two building sites; your dream has just come closer to reality. Incredible view of Navy Channel and Mount Baker. This is a perfect lot to enjoy our Mediterranean climate with lots of room to create an oasis all your own. With it's sunny, private, low bank ocean front where you can launch your boats, this is paradise! The well provides 15 gallons per minute; septic is required. Agents please see M2M notes for ocean access at the neighbours' for viewing.*

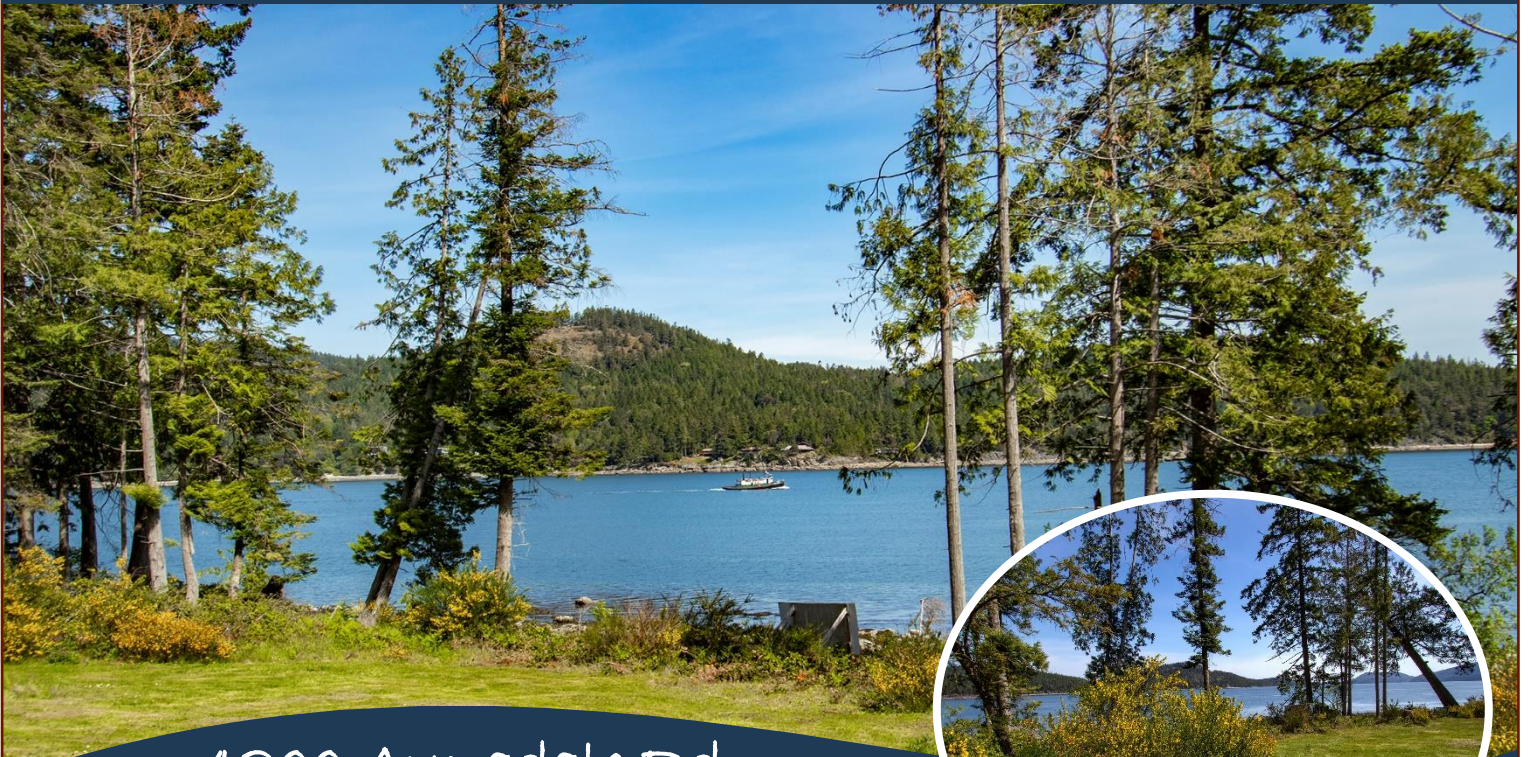


Hope Bay: 250-629-3166  
Sidney: 250-656-5062  
info@DocksiderRealty.ca

Driftwood: 250-629-3383  
Saturna: 250-539-2121  
www.DocksiderRealty.ca



# Property Details



4200 Armadale Rd



**Lot Acres:** 1.56

**Water:** drilled well

**Waste:** None

**Driveway:**  
Gravel/Dirt

**Lot Features:**

- Ocean Front
- Cleared
- Private
- Sunny

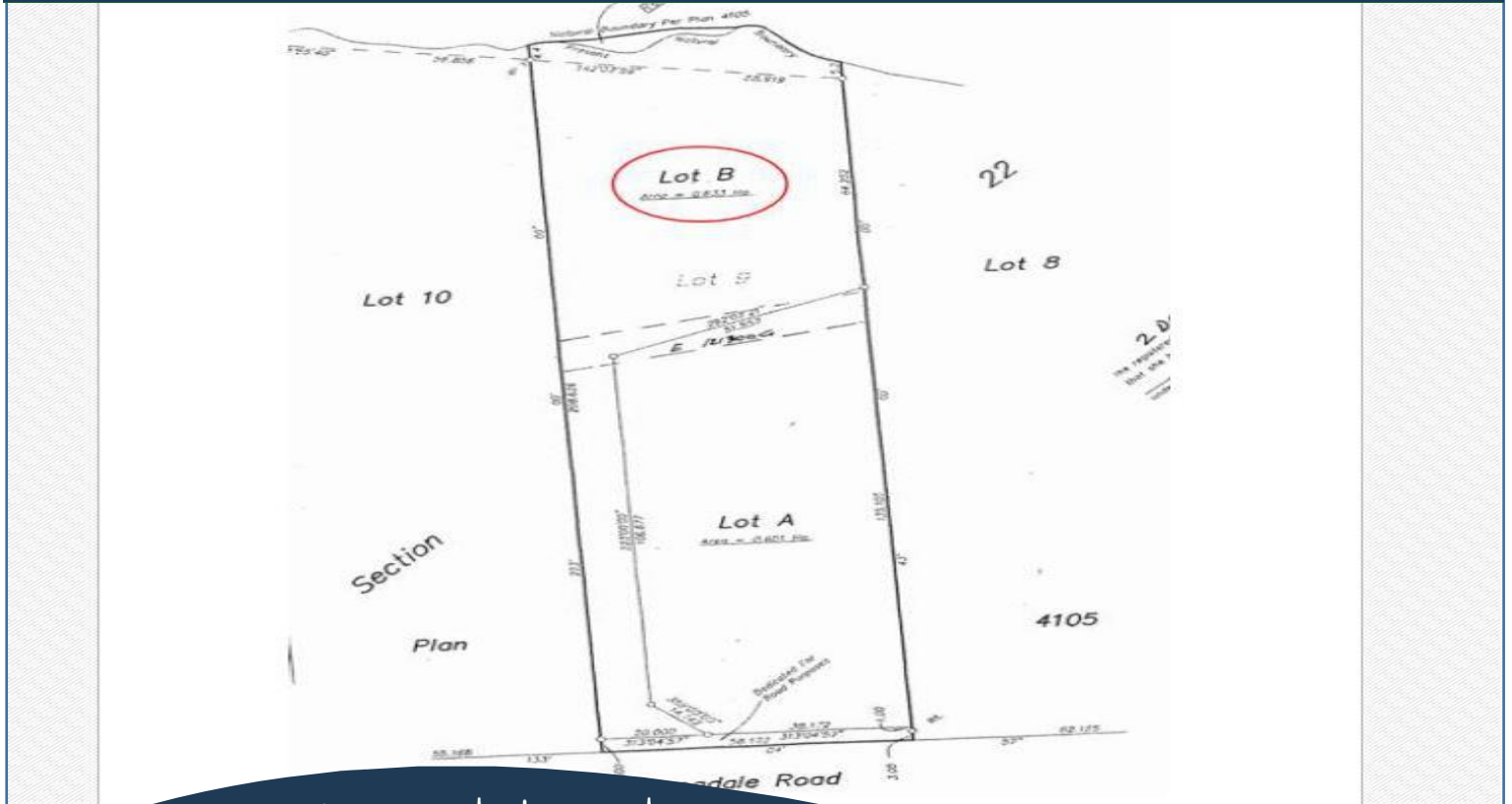


Hope Bay: 250-629-3166  
Sidney: 250-656-5062  
info@DocksideRealty.ca

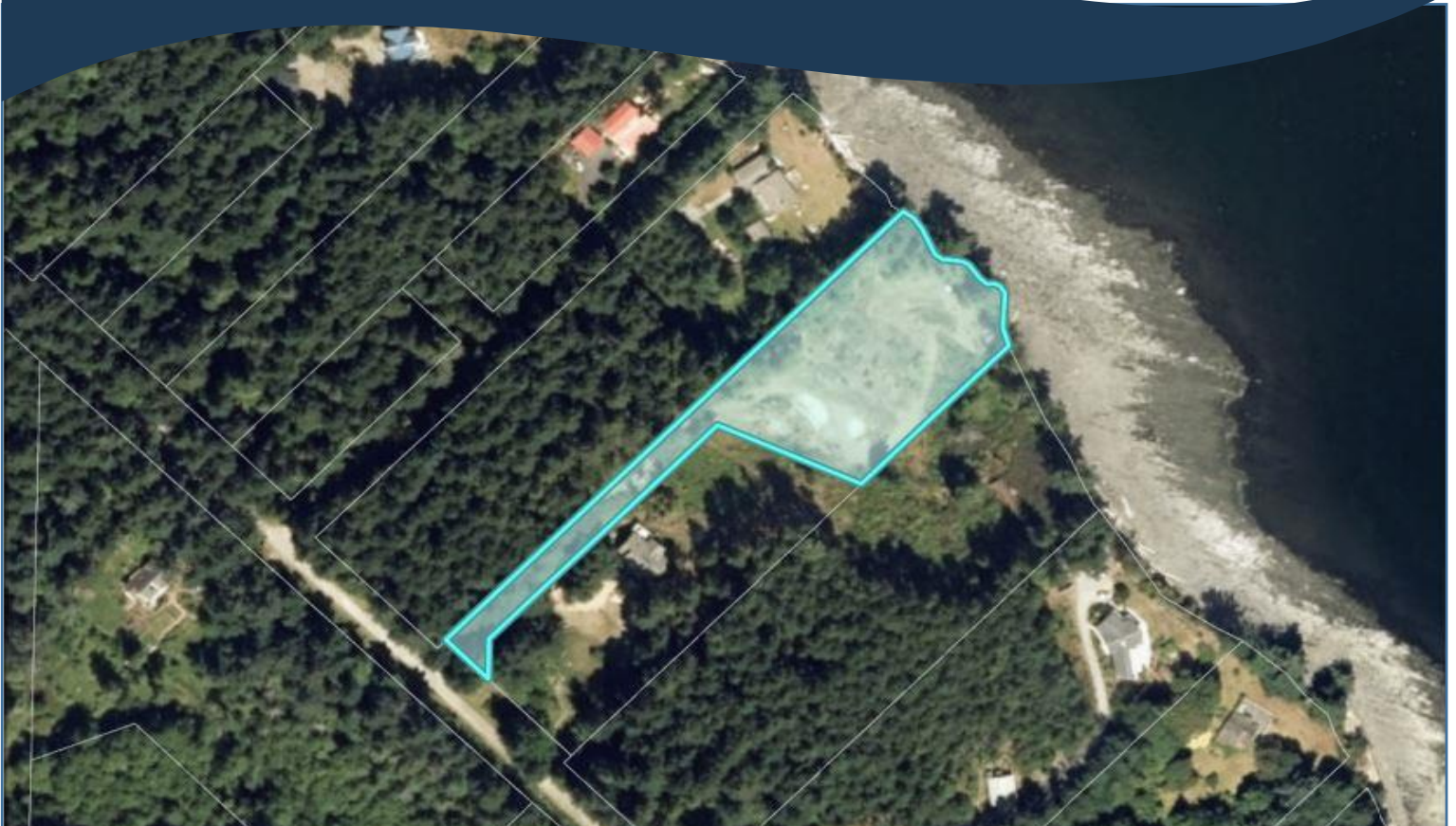
Driftwood: 250-629-3383  
Saturna: 250-539-2121  
www.DocksideRealty.ca



# Plot Plan and Aerial View



4200 Armadale Rd



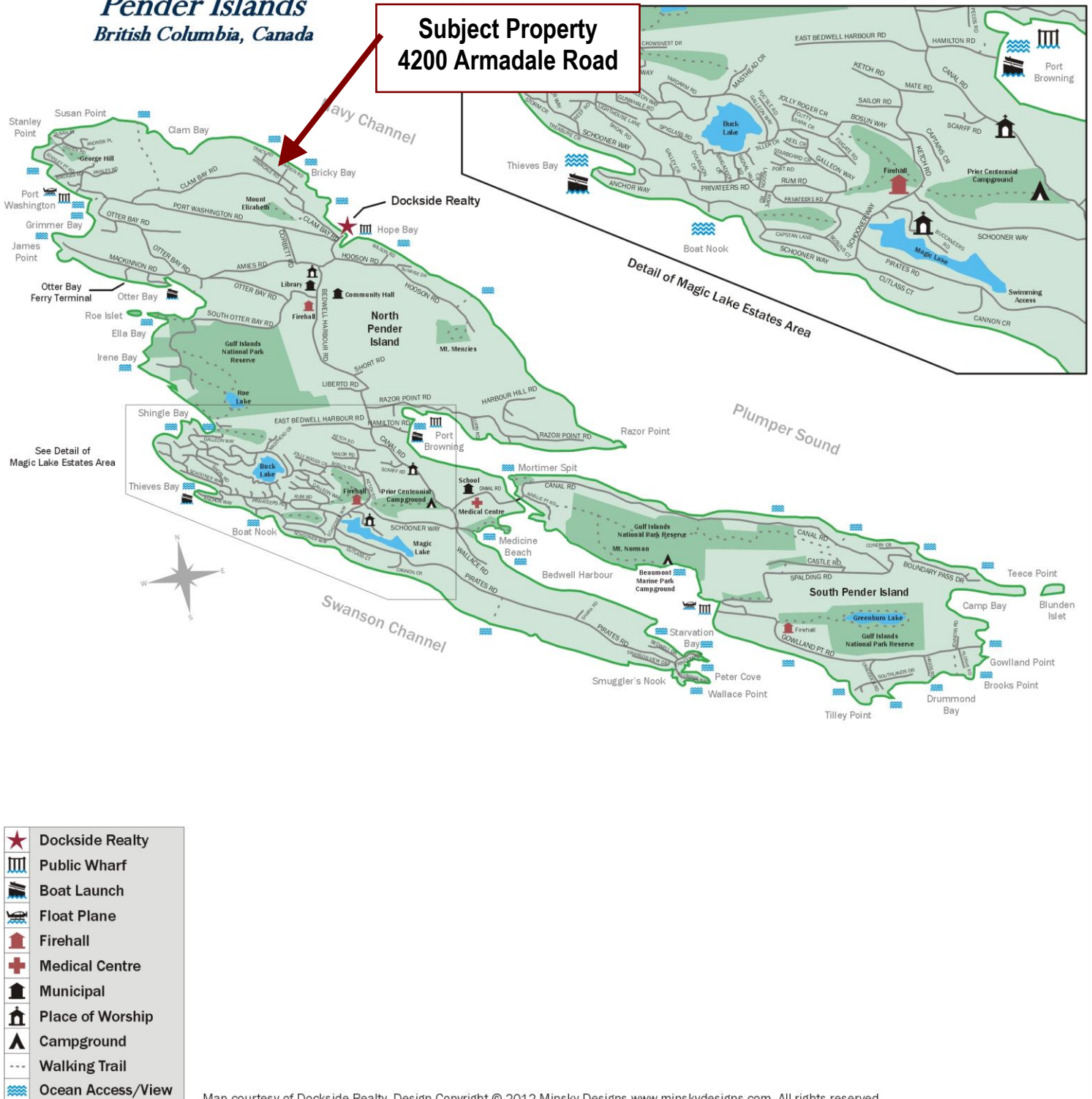
Hope Bay: 250-629-3166  
Sidney: 250-656-5062  
info@DocksideRealty.ca

Driftwood: 250-629-3383  
Saturna: 250-539-2121  
www.DocksideRealty.ca

# Pender Islands Map

## Pender Islands British Columbia, Canada

**Subject Property  
4200 Armadale Road**



***DISCLAIMER:*** While every effort is made to provide reliable information, Dockside Realty Ltd. makes no representations or warranties as to the accuracy of this brochure.

All measurements are approximate and the buyer is responsible for verifying all data provided.



Hope Bay: 250-629-3166  
Sidney: 250-656-5062  
info@DocksideRealty.ca

Driftwood: 250-629-3383  
Saturna: 250-539-2121  
www.DocksideRealty.ca