

East Sooke Rural Paradise!



6247 East Sooke Rd.



This 0.62-acre property offers a private and secluded oasis in nature yet is only 15min. from Sooke amenities and 25min. to the Westshore. Absolutely beautiful property with attractive rock work and landscaping, seasonal creek, cherry & plum trees, pond, and serene sitting areas. Within walking distance to beach access, children's park, and East Sooke Park entrance, you are located on nature's doorstep. Inside you will find a bright and freshly painted 1500-sqft rancher with 4BR, 3BA, sunken living room w/feature woodstove, and dining room with french doors leading to deck. Black Walnut & Vintage Oak floors add to the charm and character. Full length covered deck at back with hot tub to enjoy the views. Secure fences front & partial back for your pets. Outbuildings include a workshop with full power, chicken coop, and an adorable artist studio.



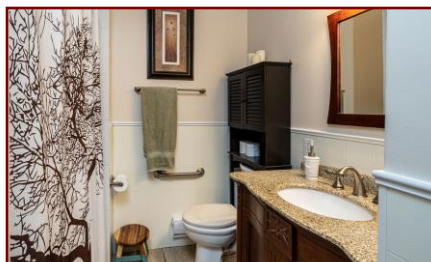
SUZI JACK, *PREC, LICENSED REALTOR®

Office: 250-656-5062 Cell: 250-203-3919 www.DocksideRealty.ca

Property Details



6247 East Sooke Rd.



Features:

- Professional upgrade to 200-amp electrical service
- Power run out underground professionally to workshop out back and studio
- Pond with rock work and functional pump to the creek
- Hot water tank replaced in 2017
- New washer and dryer 2017
- Full back deck covered
- New roof, drywall, paint and floor in studio
- New carpet, floor and toilet in rec room
- Framed greenhouse in front
- Multiple trees cut down professionally to bring in light and too keep property maintained



SUZI JACK, *PREC, LICENSED REALTOR®

Office: 250-656-5062 Cell: 250-203-3919 www.DocksideRealty.ca

Floor Plans

MAIN FLOOR
1512 SQ. FT.
 10'-2" TO 8' CEILING HEIGHT



NORTH



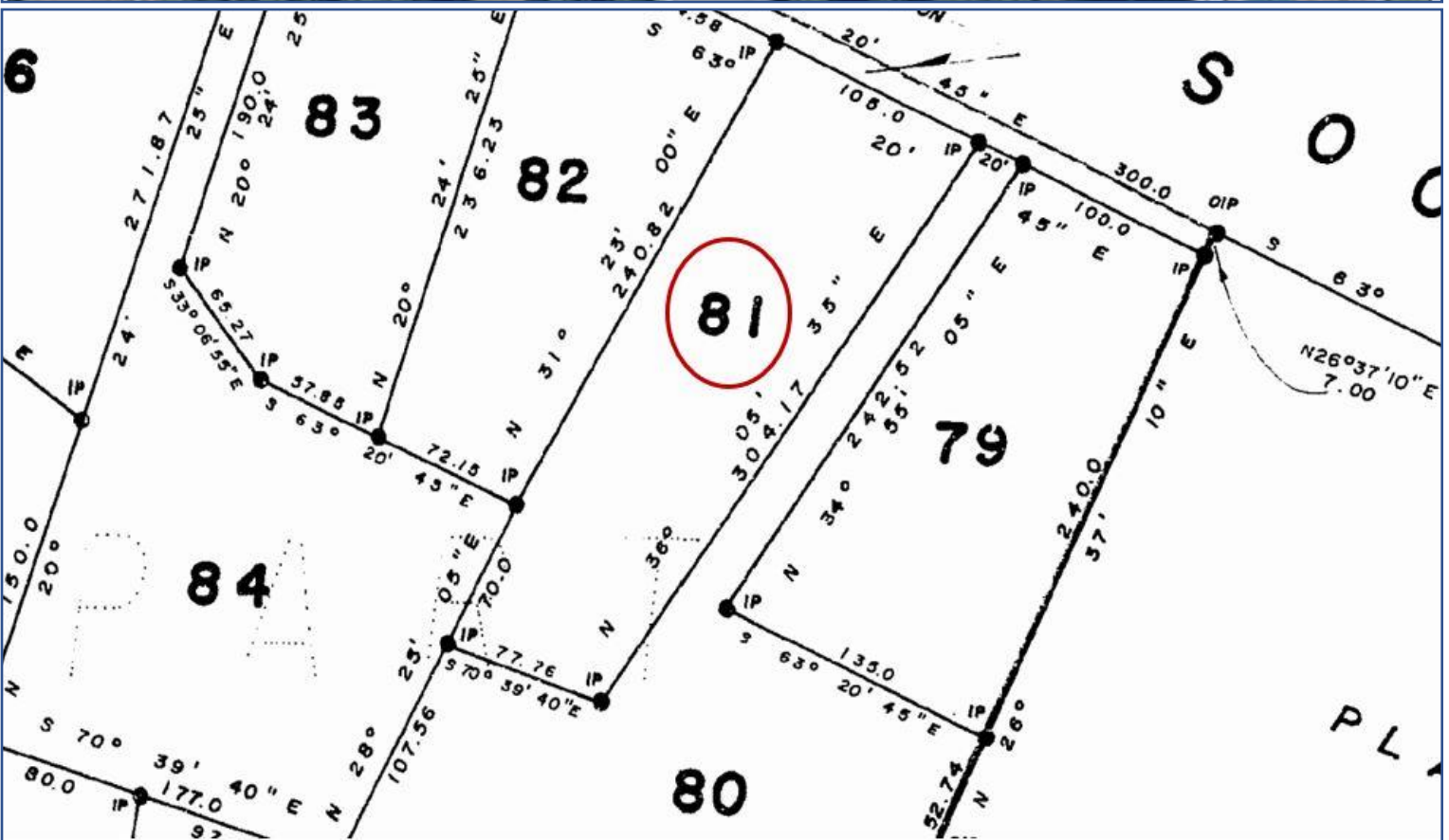
0' 5' 10'
 SCALE

6247 EAST SOOKE ROAD		
APRIL 6, 2020		
PREPARED FOR THE EXCLUSIVE USE OF SUZI JACK		
PLANS MAY NOT BE 100% ACCURATE, IF CRITICAL BUYER TO VERIFY		
FLOOR	AREA (SQ. FT.)	
	FINISHED	DECK / PATIO
MAIN	1512	802

PROPER MEASURE
 PRECISION

250-884-9753
 matt@propermeasure.com
 www.propermeasure.com

Aerial & Plot Plan Map



SUZI JACK, *PREC, LICENSED REALTOR®
Office: 250-656-5062 Cell: 250-203-3919 www.DocksideRealty.ca