

South Facing valley view!



9888 Castle Road



Neighbour's Valley Views, Similar Views
on This Lot Once Some Trees Are Cleared



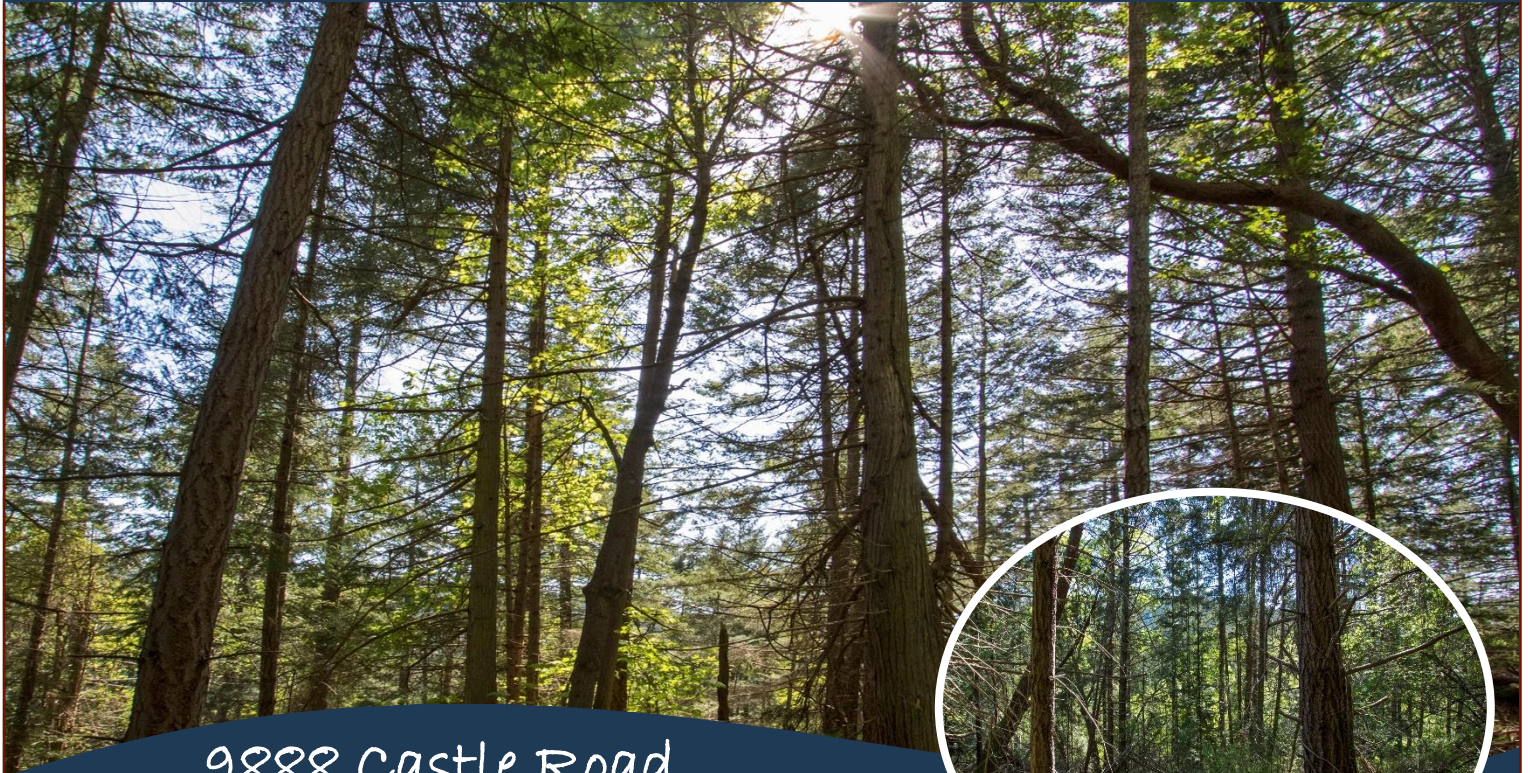
South facing, valley view, 0.92 acre building lot on picturesque South Pender Island. This is an awesome opportunity, waiting for a buyer that wants to enjoy sunshine, rural enjoyment, fresh air, calmer days & an economically viable way to get into the market. A drilled well is in place, but septic will be required. Hydro & cable/internet are available at the lot line off of Canal Road. This is a bare land strata, with a freehold Title. The annual strata fees are only \$200, to cover maintenance of the paved access road, as well as the 32 acres of parkland & hiking trails in the dedicated common property. There are spectacular ocean views at the top of the Castle Road Trail, also part of the common property. Located in a very desirable area, within walking distance to Poets Cove Resort & Spa. Rarely do properties come available in this location!



Hope Bay: 250-629-3166
Sidney: 250-656-5062
info@DocksideRealty.ca

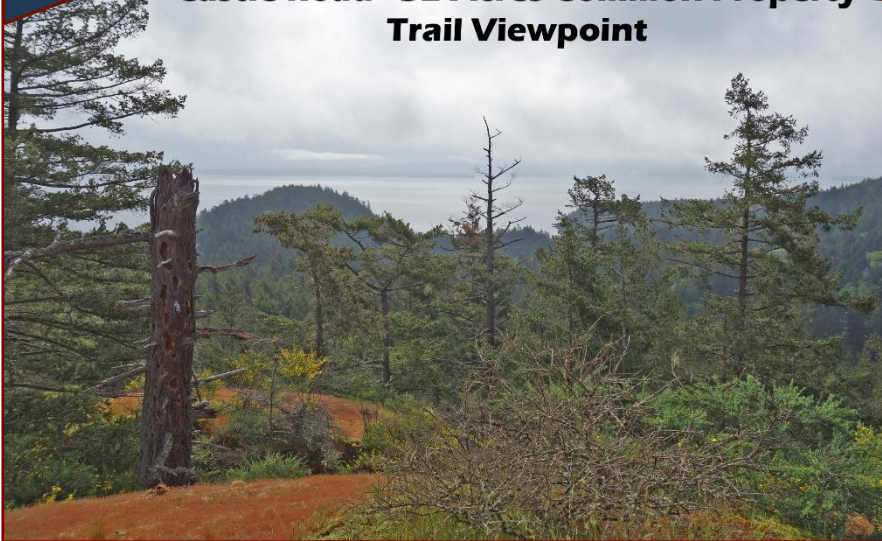
Driftwood: 250-629-3383
Saturna: 250-539-2121
www.DocksideRealty.ca

Property Details

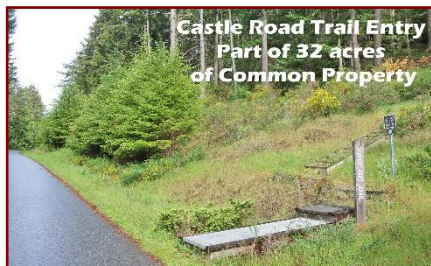


9888 Castle Road

**Castle Road - 32 Acres Common Property
Trail Viewpoint**



Castle Road Common Property
Lilias Spalding Park



Castle Road Trail Entry
Part of 32 acres
of Common Property

Lot Acres: 0.92

Water: drilled well

Waste: None

Services: See
remarks

Driveway: None

Lot Features:

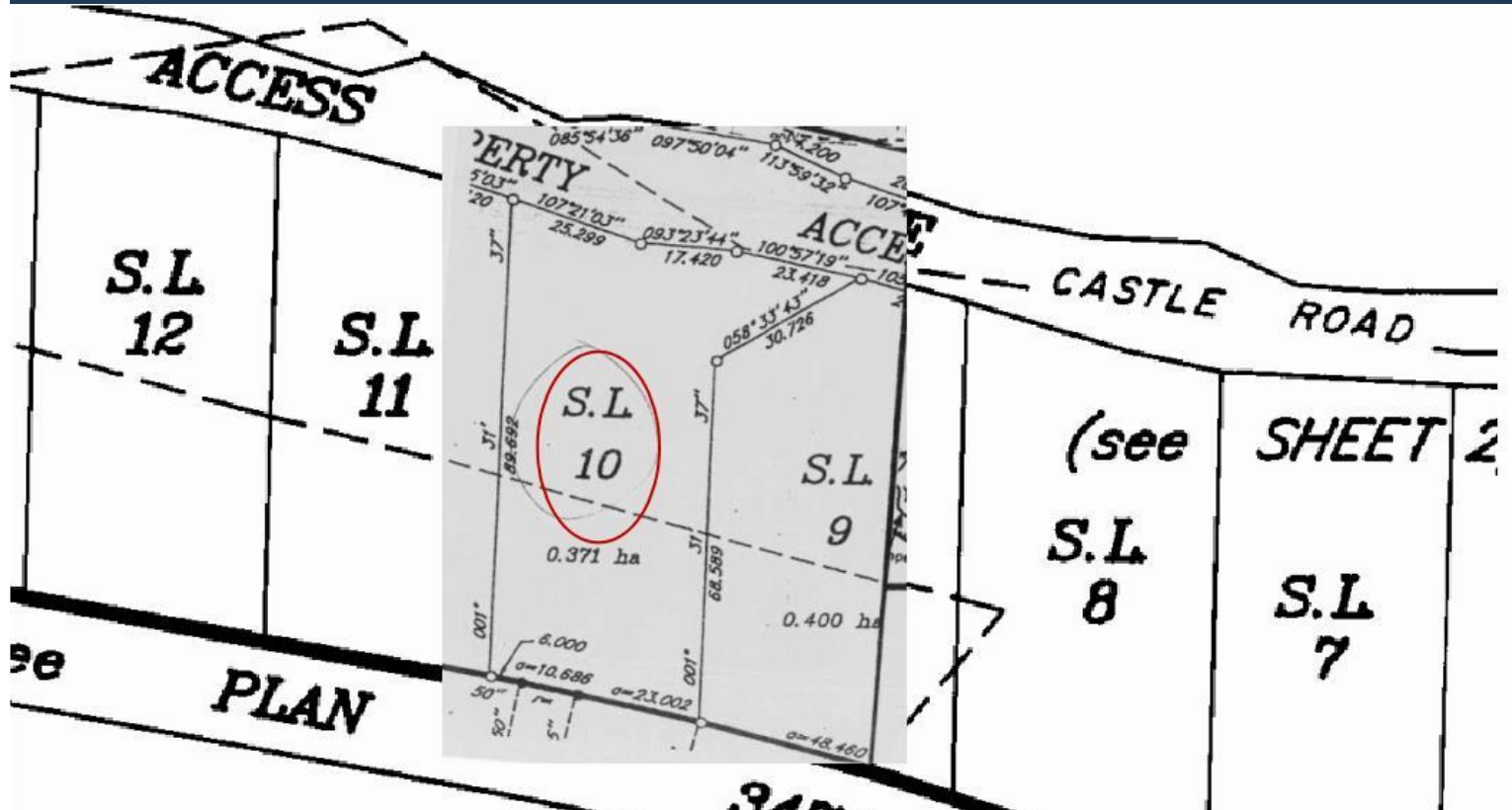
- Valley Views
- Southern Exposure
- Private
- Rocky
- Sloping
- Treed
- 32 Acres Common Property



Hope Bay: 250-629-3166
Sidney: 250-656-5062
info@DocksideRealty.ca

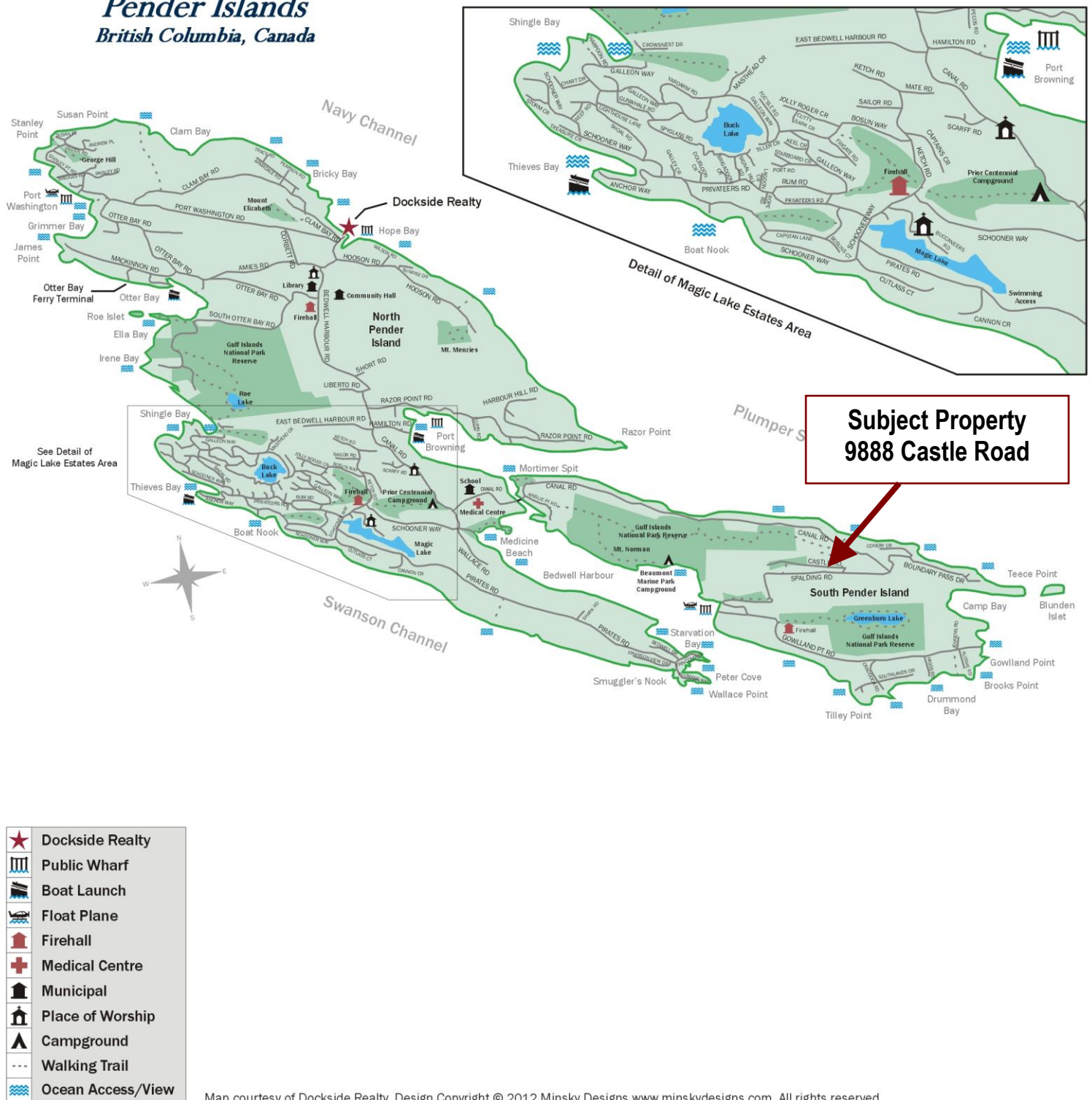
Driftwood: 250-629-3383
Saturna: 250-539-2121
www.DocksideRealty.ca

Plot Plan and Aerial View



Pender Islands Map

Pender Islands British Columbia, Canada



DISCLAIMER: While every effort is made to provide reliable information, Dockside Realty Ltd. makes no representations or warranties as to the accuracy of this brochure.

All measurements are approximate and the buyer is responsible for verifying all data provided.



Hope Bay: 250-629-3166
Sidney: 250-656-5062
info@DocksideRealty.ca

Driftwood: 250-629-3383
Saturna: 250-539-2121
www.DocksideRealty.ca