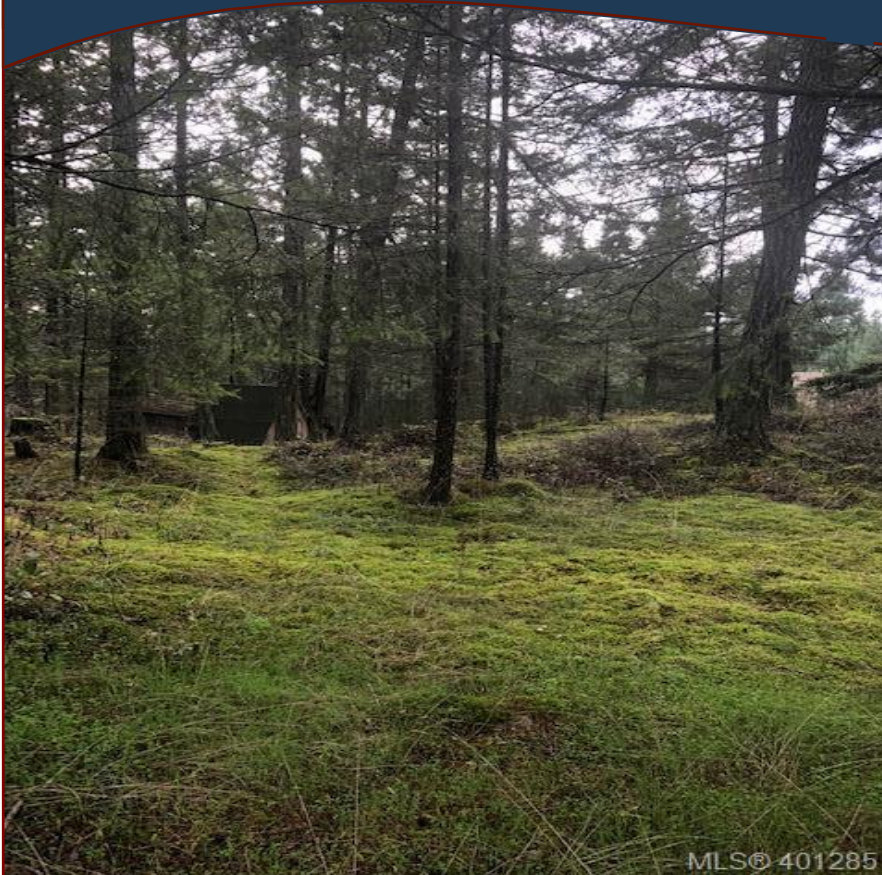


Central Magic Lake Lot!



3751 Privateers Rd lot 12



MLS® 401285

Great building lot with all the services at the lot line. This half acre lot is easy to build on, with a large flat area in front of the lot, as it gently slopes away to the south. Drive way is in and so is the culvert. There is a small old outbuilding on the property that can be removed once you start building. This lot is a few doors down from the park and tennis courts with Thieves Bay Marina close by.



Hope Bay: 250-629-3166
Sidney: 250-656-5062
info@DocksdeRealty.ca

Driftwood: 250-629-3383
Saturna: 250-539-2121
www.DocksdeRealty.ca

Property Details



3751 Privateers Rd Lot 12



MLS® 401285

Lot Size: .51 ac (est)
22.21 sq ft.

Water: Municipal

Waste: Sewer

Services: At lot line

Driveway: Gravel

Bldg Scheme: No

Lot Shape: Rectangle

Lot Features:

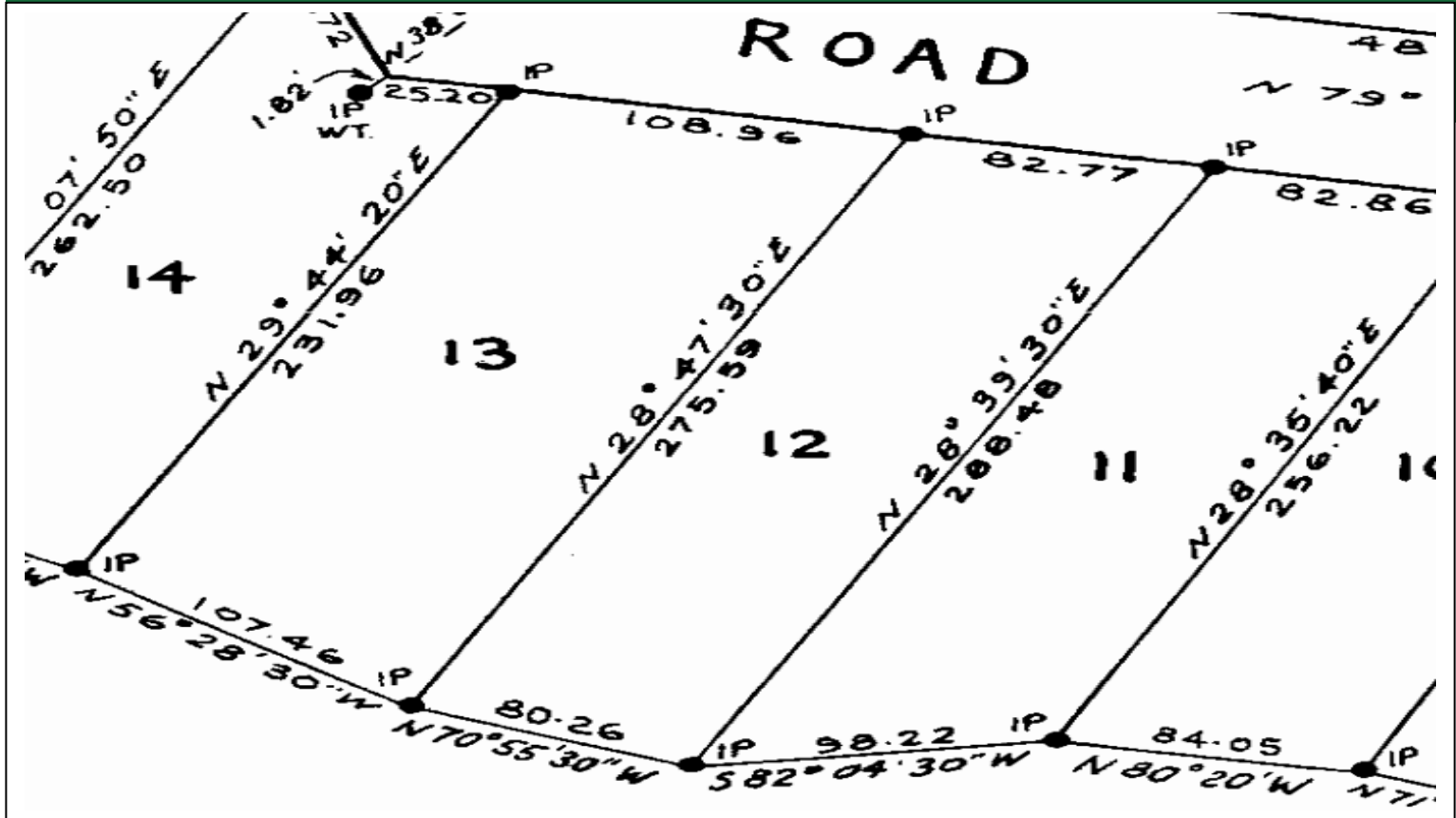
- Treed
- Private Property
- Culvert in place
- Sloping
- Level Building Site
- Near Thieves Bay Marina
- Close to tennis courts & park



Hope Bay: 250-629-3166
Sidney: 250-656-5062
info@DocksideRealty.ca

Driftwood: 250-629-3383
Saturna: 250-539-2121
www.DocksideRealty.ca

Plot Plan and Aerial View

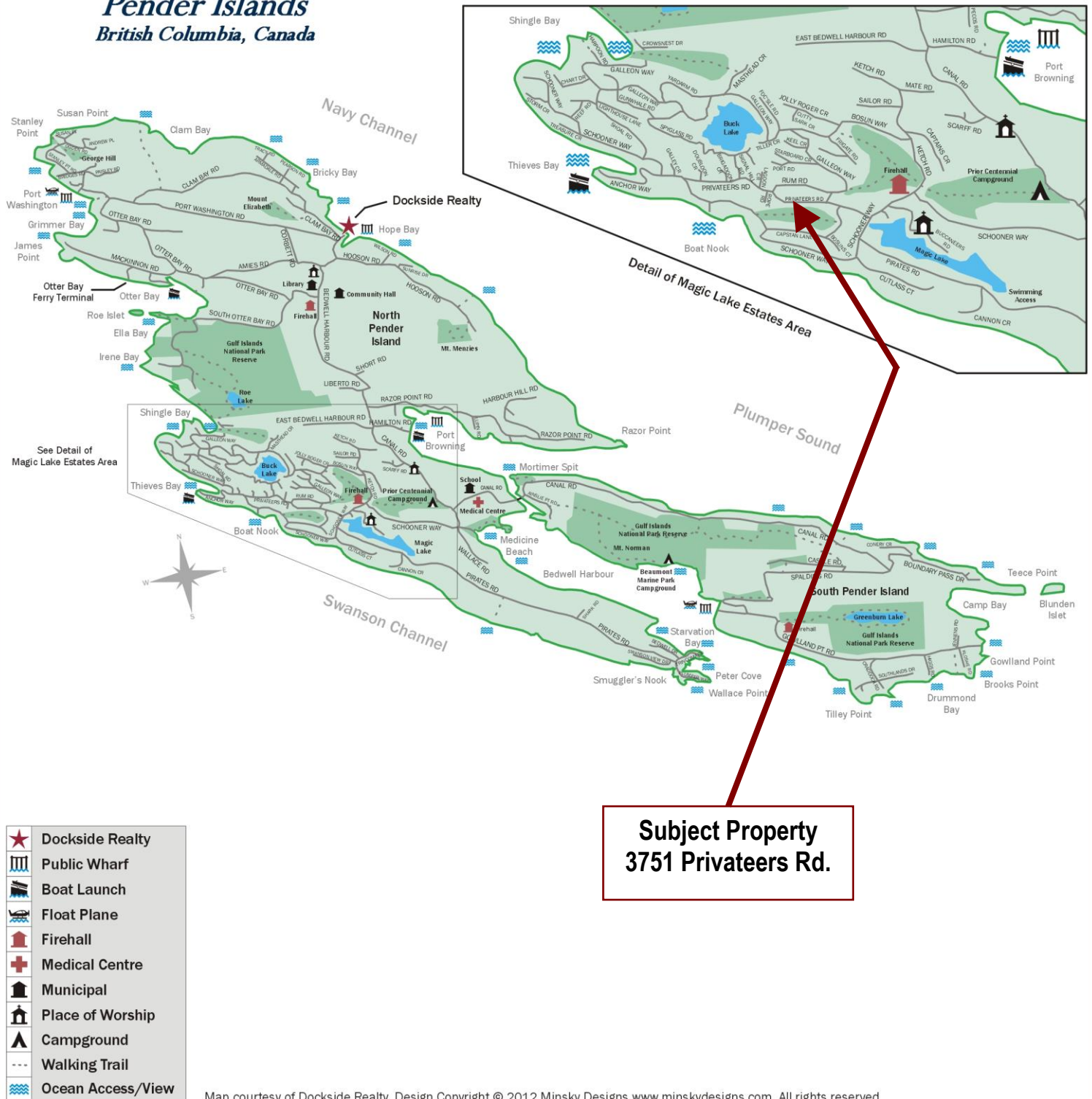


Hope Bay: 250-629-3166
 Sidney: 250-656-5062
 info@DocksideRealty.ca

Driftwood: 250-629-3383
 Saturna: 250-539-2121
 www.DocksideRealty.ca

Pender Islands Map

Pender Islands British Columbia, Canada



**Subject Property
3751 Privateers Rd.**

DISCLAIMER: While every effort is made to provide reliable information, Dockside Realty Ltd. makes no representations or warranties as to the accuracy of this brochure.

All measurements are approximate and the buyer is responsible for verifying all data provided.



Hope Bay: 250-629-3166
Sidney: 250-656-5062
info@DocksideRealty.ca

Driftwood: 250-629-3383
Saturna: 250-539-2121
www.DocksideRealty.ca