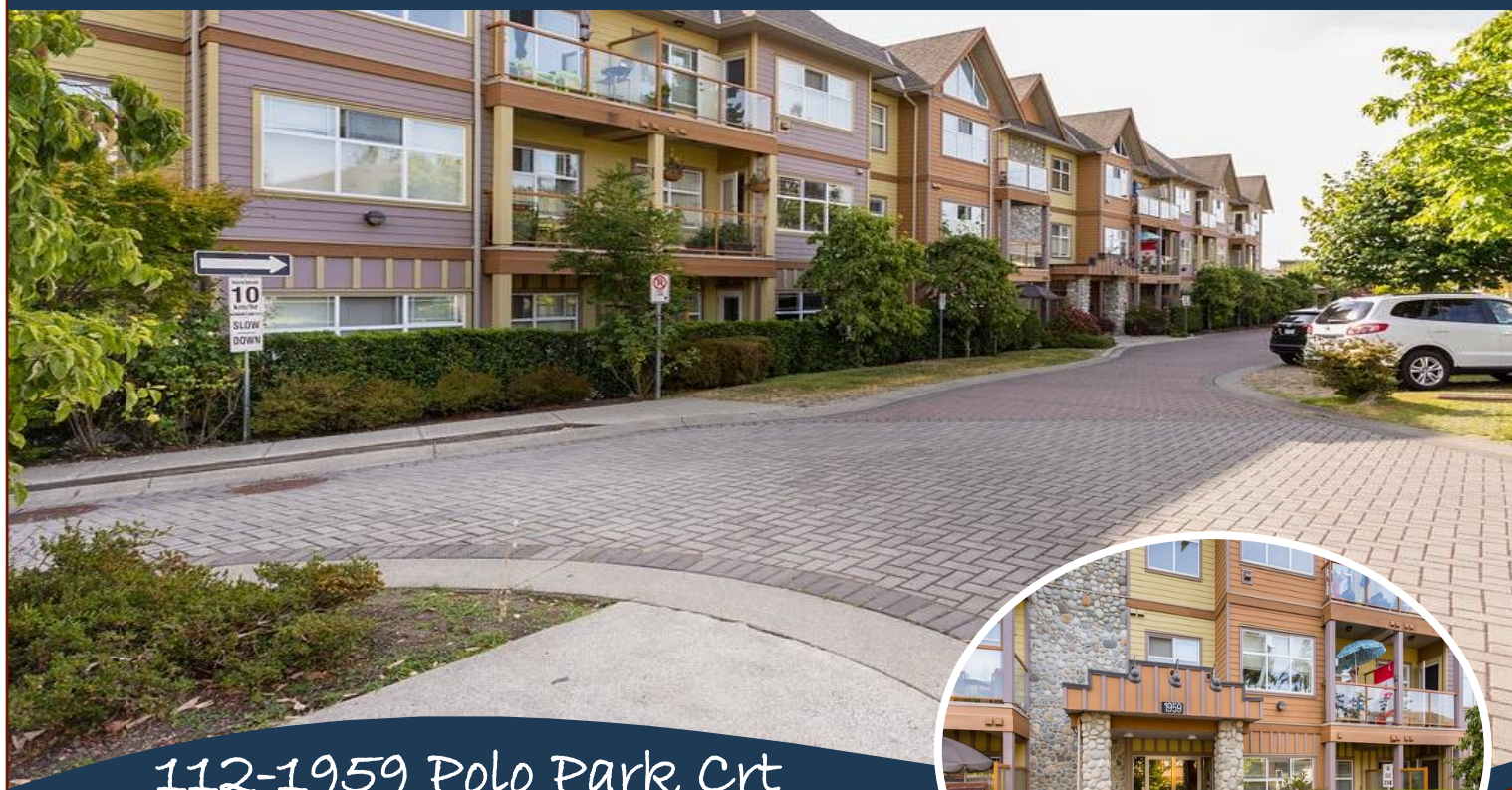


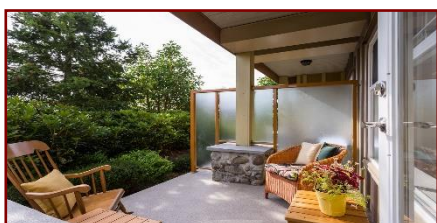
# Bright Garden Suite!



112-1959 Polo Park Crt



Bright 2BR, 2BA garden suite in sought after Polo Park. Exceptional floor design with open style kitchen, living, and dining with the bedrooms on either side for added privacy. Enjoy your morning coffee on your large east facing patio with established gardens to maintain privacy. Located in the Village of Saanichton, you have all the amenities within walking distance. This complex is very well run, offers secure underground parking and entry and its location affords easy access to the airport and ferries.



SUZI JACK, \*PREC, LICENSED REALTOR®  
Office: 250-656-5062 Cell: 250-203-3919 [www.DocksideRealty.ca](http://www.DocksideRealty.ca)



# Property Details



112-1959 Polo Park Crt



**Year Built:** 2004

**Bedrooms:** 2

**Bathrooms:** 2

**Fin SqFt:** 880

**Water:** Municipal

**Waste:** Sewer

**Parking:** Secure  
underground

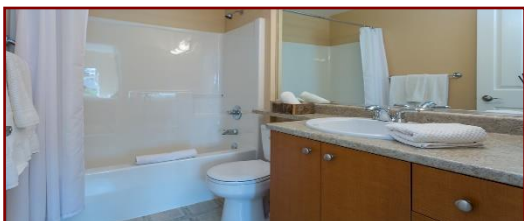
**Foundation:**  
Concrete Poured

**Roof:** Fiberglass

**Ext Fin:** Cement  
Fibre

**Fuel:** Electric

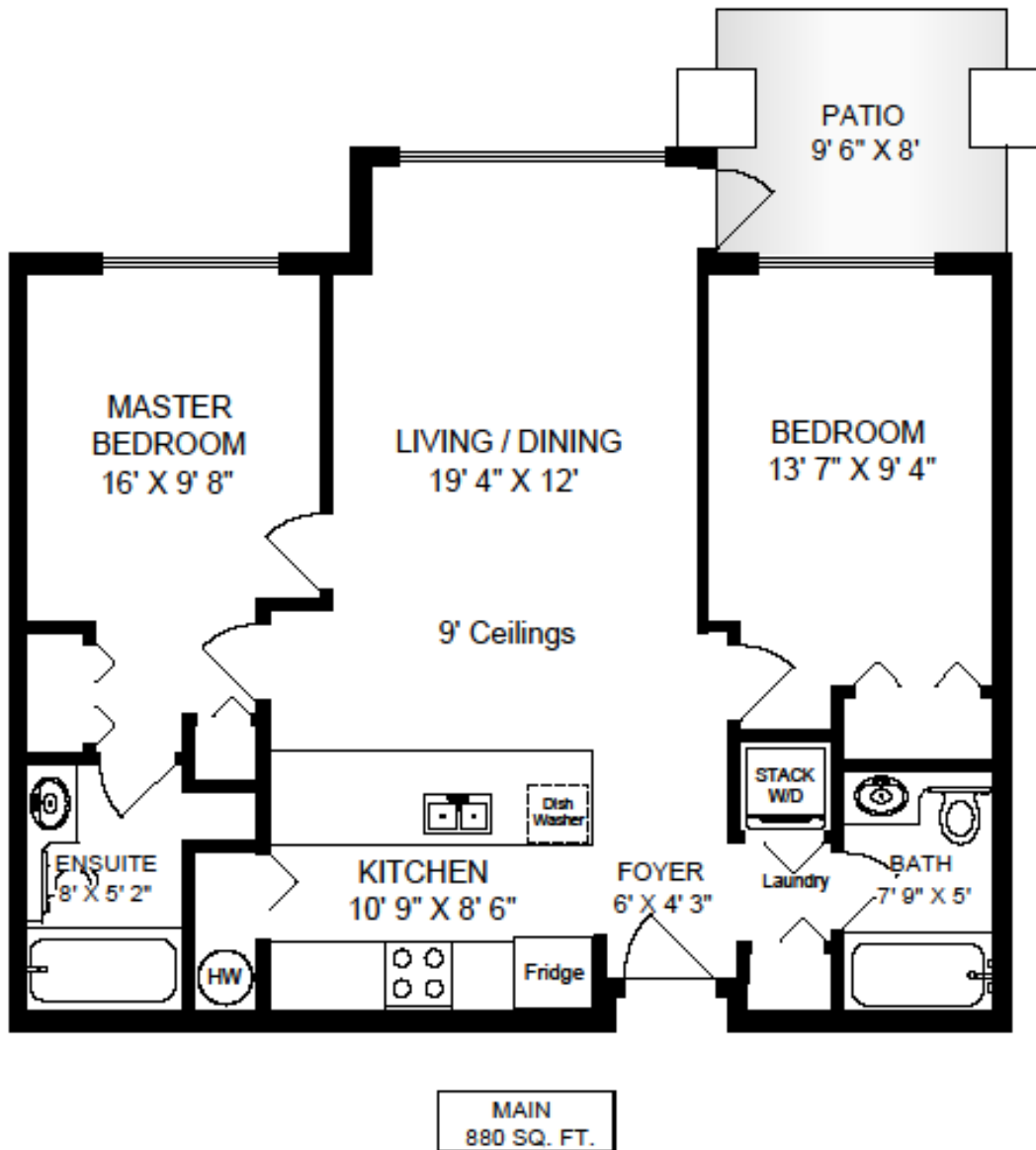
**Heat:** Baseboard



SUZI JACK, \*PREC, LICENSED REALTOR®

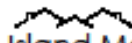
Office: 250-656-5062 Cell: 250-203-3919 [www.DocksideRealty.ca](http://www.DocksideRealty.ca)

# Floor Plans



0' SCALE 5'

	FINISH SQ. FT.	UNFINISH SQ. FT.	TOTAL SQ. FT.
MAIN	880		880
TOTAL	880		880
PATIO		70	70

EXCLUSIVELY FOR SUZI JACK DOCKSIDE REALTY LTD.	
AUG. 14 2017	 <b>Island Measure</b> Residential and Commercial Floor Plans
REF # 5160	250-518-8273 <a href="http://islandmeasure.com">islandmeasure.com</a>
<small>MEASUREMENTS MAY NOT BE 100% ACCURATE. IF CRITICAL, BUYER TO VERIFY. ROOM SIZES ARE NOT USED TO CALCULATE AREA. FLOOR PLANS ARE PREPARED FOR CONFORMANCE ONLY.</small>	



# Aerial Map

