



Suzi Jack REALTOR®

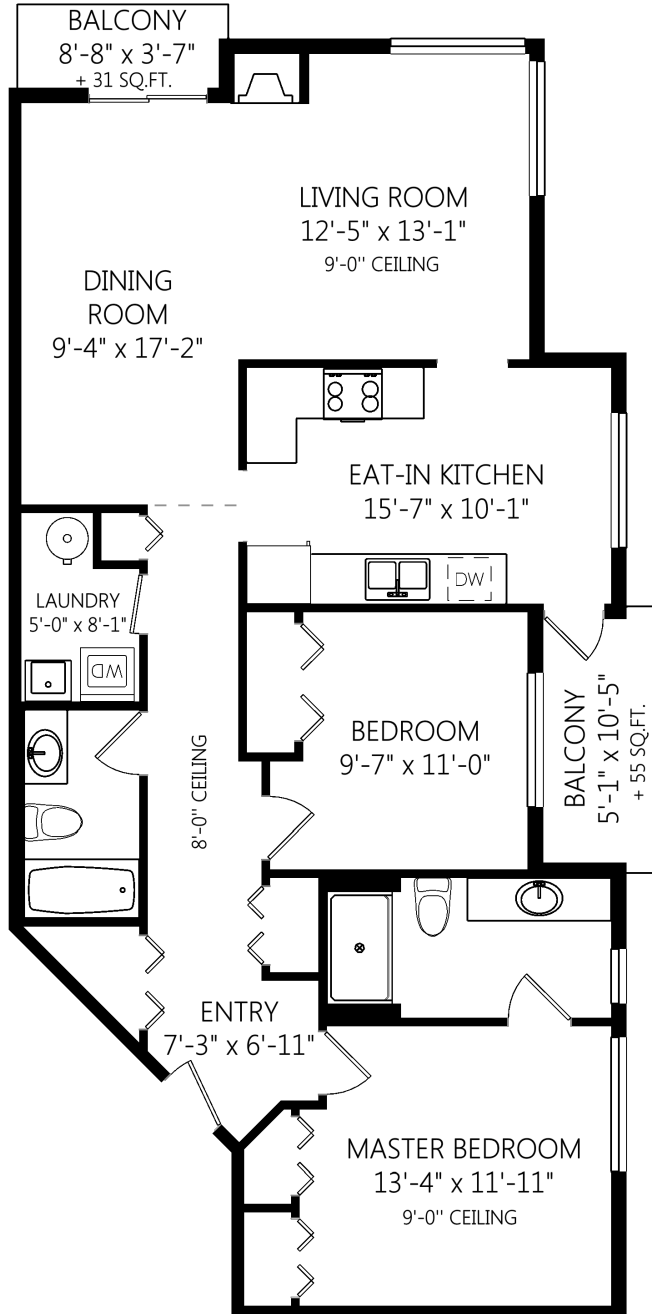
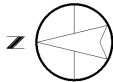


sherrie@docksiderealty.ca http://docksiderealty.ca
 Office: (250) 629-3166 Direct: (250) 217-0338
 Toll-Free: 1 (866) 629-3166

Dockside Realty
 #17-4301 Bedwell Harbour Road
 Pender Island, BC V0N 2M1

204-2318 James White Blvd

SINGLE LEVEL
 1183 FINISHED SQ.FT.
 + ADDNL. SQ.FT. WHERE NOTED



	Fin. Sq.Ft.	UnFin. Sq.Ft.	Total Sq.Ft.
Single Level	1183	0	1183
Total	1183	0	1183

Shown length and width dimensions are approximate.
 Area sq.ft. is representative of the on-site measurements. (1" accuracy)



Figures, Calculations, and Representations are for indicative and promotional purpose only.
 VI Standard Real Estate Services Inc. will not be liable for any damages of any kind arising from the mis-use of this information.