

Premium Oceanview Acreage!



1208 Bridges Rd



Location, Location, Location!! Desirable oceanview acreage set in a premium location in much sought after, Historic Port Washington. 1.5-acre property enjoys sunny Southern exposure & is just 300 meters from public beach access and approximately the same from Port Washington Government Dock. Parkland across the street ensures the lovely views will always be on display. A very rustic dwelling and several outbuildings are onsite, but the exceptional value is in the re-development potential to create your dream home or cottage. Golf course, BC Ferries, Shopping and Otter Bay Marina are just a short drive nearby. Septic System required.



Property Details



1208 Bridges Rd



Lot Acres: 1.52

Water: Other

Waste: Septic system needed

Services: At lot line

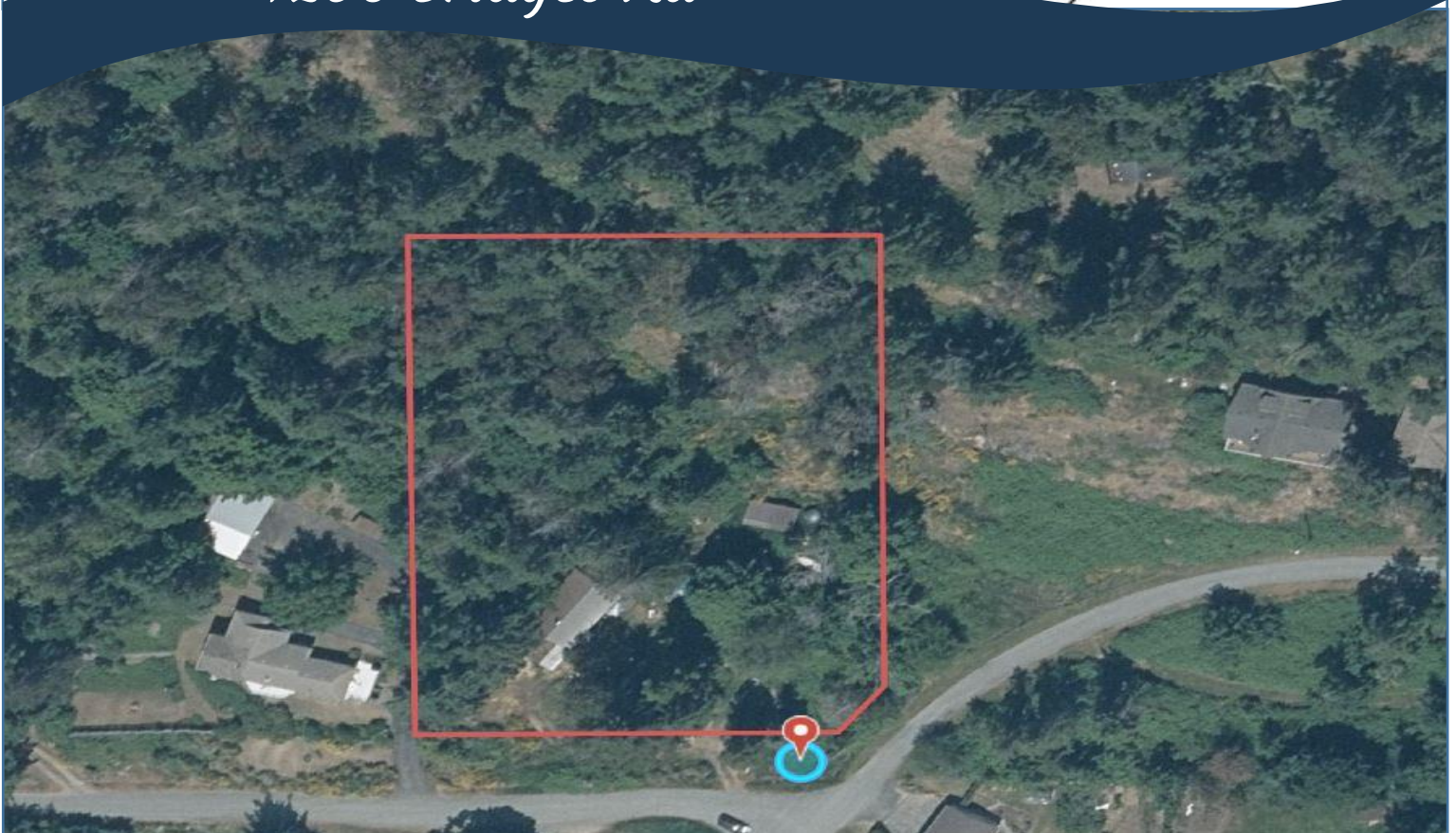
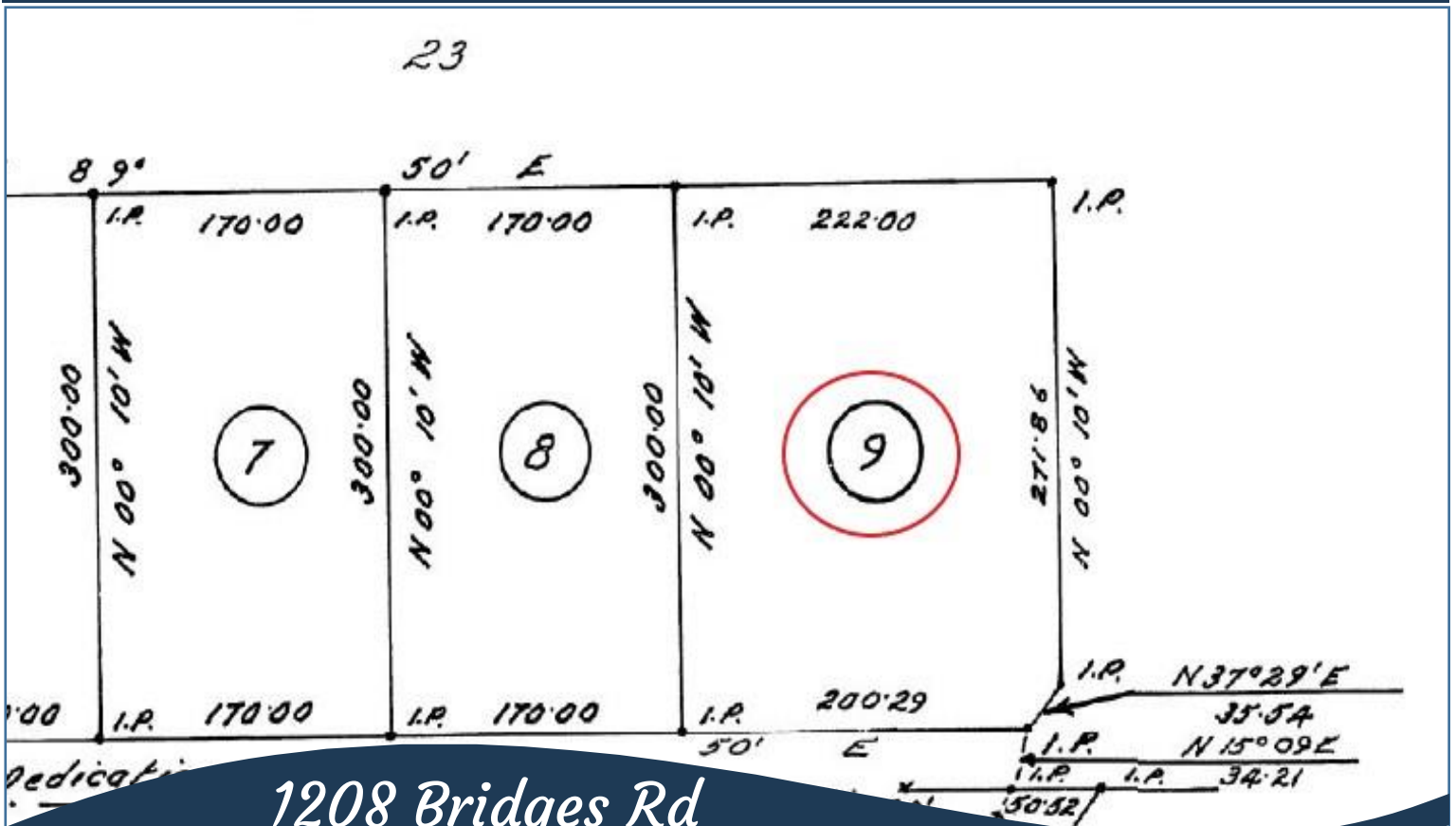
Driveway: Gravel

Bldg Scheme: No

Lot Features:

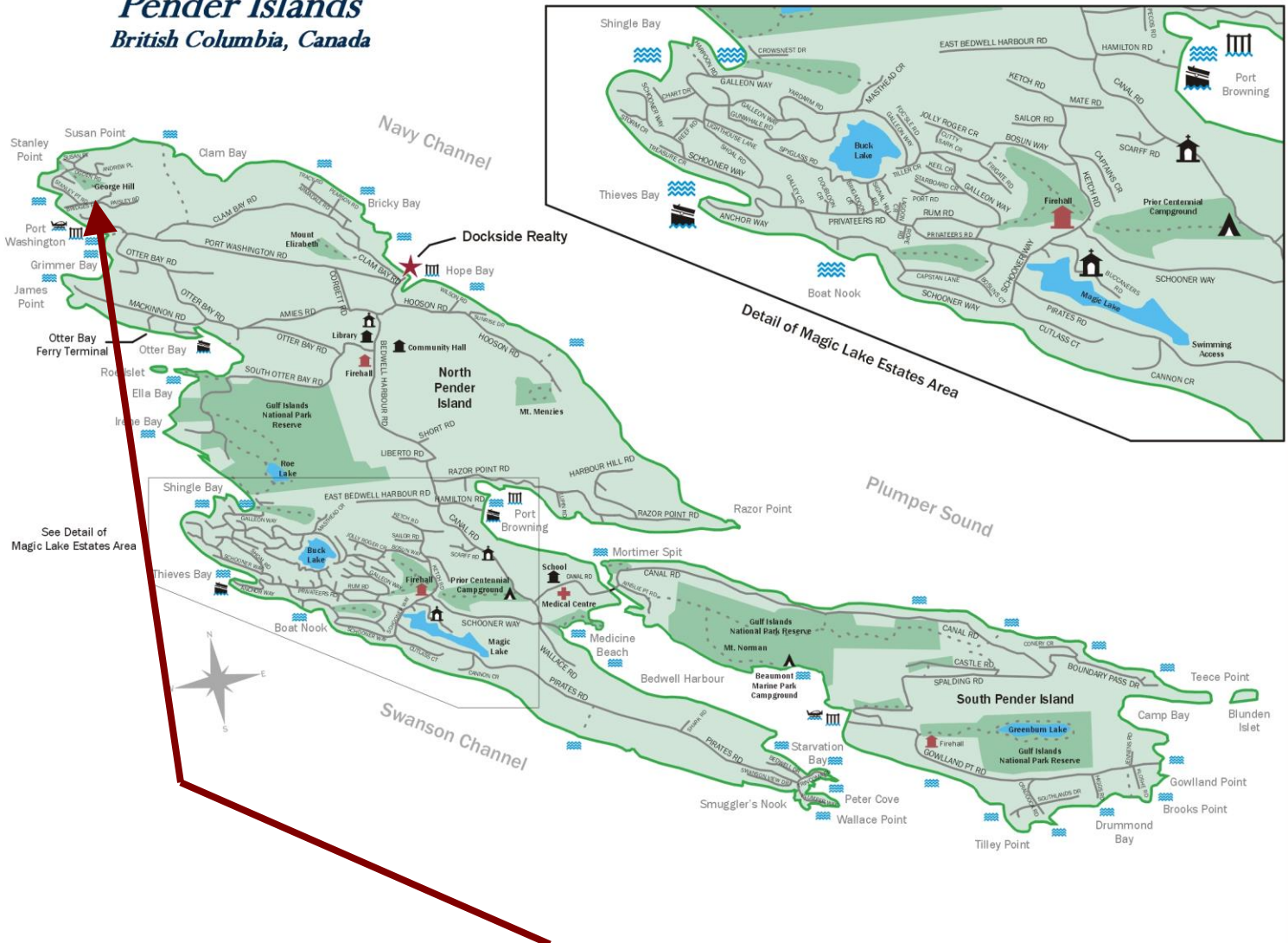
- Ocean Views
- Southern exposure
- Acreage
- Cleared
- Quiet area
- Level building site
- Close to Port Washington float plane, ferry terminal, golf course and marina

Plot Plan and Aerial View



Pender Islands Map

Pender Islands British Columbia, Canada



**Subject Property
1208 Bridges Road**

- Dockside Realty
- Public Wharf
- Boat Launch
- Float Plane
- Firehall
- Medical Centre
- Municipal
- Place of Worship
- Campground
- Walking Trail
- Ocean Access/View

Map courtesy of Dockside Realty. Design Copyright © 2012 Minsky Designs www.minskydesigns.com. All rights reserved.

DISCLAIMER: While every effort is made to provide reliable information, Dockside Realty Ltd. makes no representations or warranties as to the accuracy of this brochure.
All measurements are approximate and the buyer is responsible for verifying all data provided.



Pender Island • Saturna Island • Vancouver Island
www.DocksideRealty.ca
info@DocksideRealty.ca • 250-629-3383