

Perfect Home With a View!



1626 Schooner Way



This West Coast-style home is situated on a quiet, sunny, no-through road with a park next door. The home has been tastefully updated throughout. Features include new appliances, vinyl flooring, carpet, a ducted heat pump, an HRV system, and fresh paint. Multiple bonus rooms offer a balance between life, work, and hobbies, along with a fully fenced yard ideal for gardeners. The large covered front deck and patio provide outdoor spaces to enjoy year-round. The solarium serves as a perfect mudroom and can double as a greenhouse or sitting area. The attic has been re-insulated and professionally cleaned. With full sun, sunsets, and nearby beaches and interconnecting trails, this home is ideal for day-to-day enjoyment. A view corridor covenant ensures your view is maintained. Magic Lake owners have access to Thieves Bay Marina with low moorage and use of the tennis courts.

Measurements are approximate - buyer to verify.



Dockside Realty
Gulf Islands • Vancouver Island

Pender Island • Saturna Island • Vancouver Island

www.DocksideRealty.ca

info@DocksideRealty.ca • 250-629-3383

Property Details



1626 Schooner Way



Year Built (est):
1978

Lot Acres: 0.58

Bedrooms: 2

Bathrooms: 2

Fin SqFt: 1,900

Unfin SqFt: 0

Bsmt: Finished, with windows

Bsmt Height: 8 ft

Water: Municipal

Waste: Septic system

Driveway: Paved

Foundation:
Concrete Poured

Roof: Metal

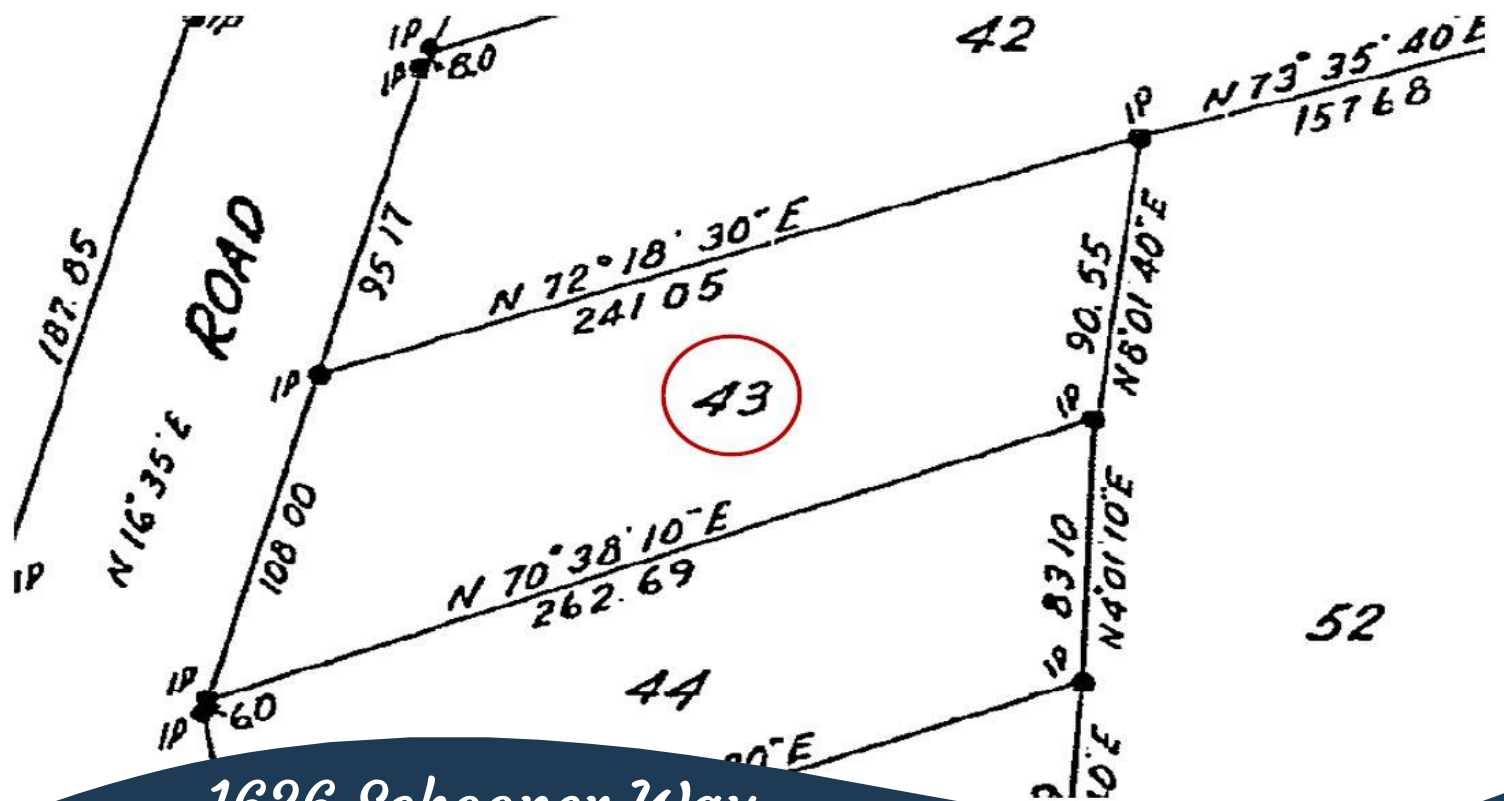
Ext Fin: Wood

Heat: Baseboard, Electric, Forced Air, Heat pump, Propane

Lot Features:

- Ocean View
- Sunny SW facing
- No thru road
- New appliances
- Magic Lake Estates with access to Thieves Bay marina & tennis courts

Plot Plan and Aerial View



1626 Schooner Way



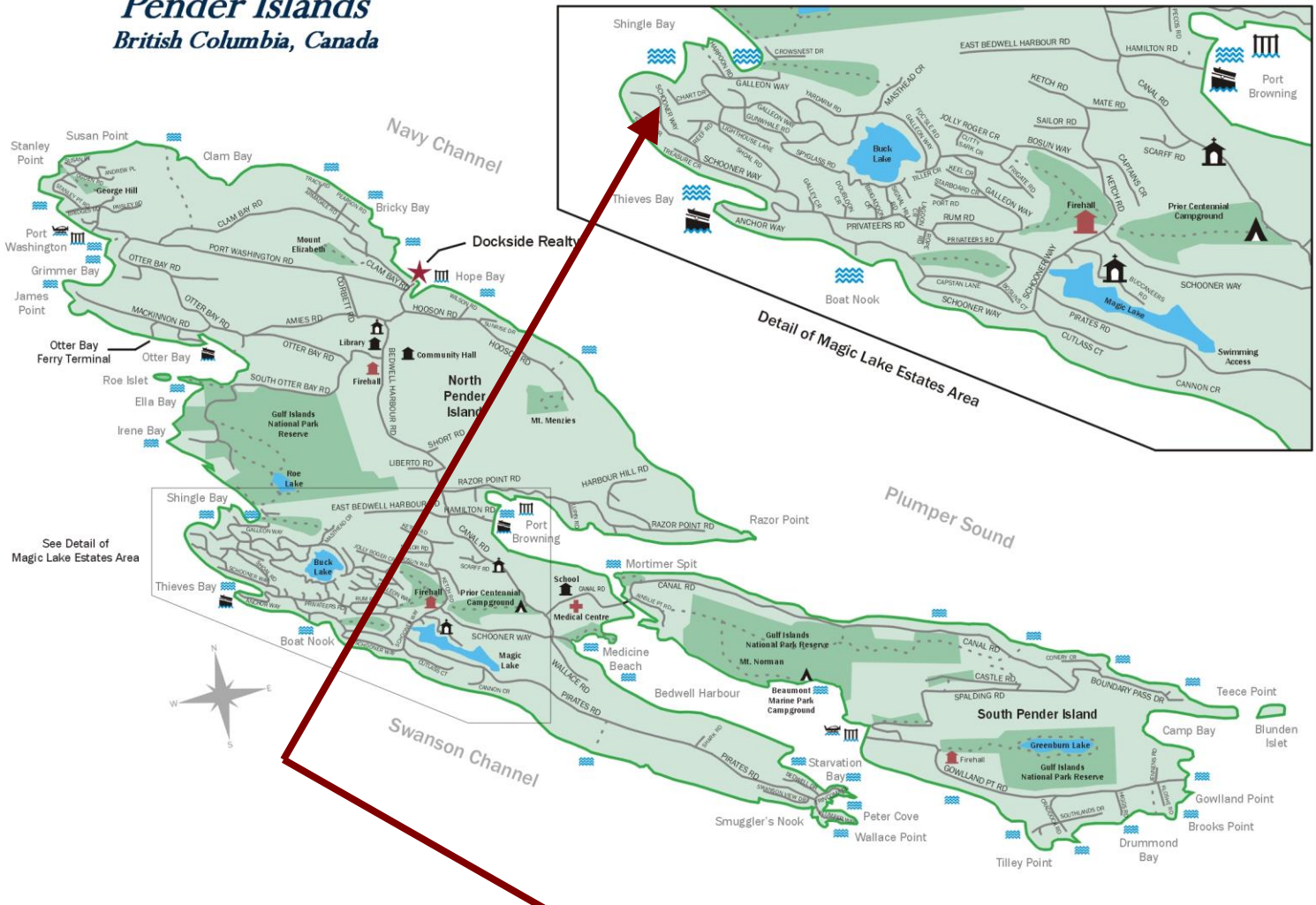
Pender Island • Saturna Island • Vancouver Island

www.DocksdeRealty.ca

info@DocksdeRealty.ca • 250-629-3383

Pender Islands Map

Pender Islands British Columbia, Canada



**Subject Property
1626 Schooner Way**

- Dockside Realty
- Public Wharf
- Boat Launch
- Float Plane
- Firehall
- Medical Centre
- Municipal
- Place of Worship
- Campground
- Walking Trail
- Ocean Access/View

Map courtesy of Dockside Realty. Design Copyright © 2012 Minsky Designs www.minskydesigns.com. All rights reserved.

DISCLAIMER: While every effort is made to provide reliable information, Dockside Realty Ltd. makes no representations or warranties as to the accuracy of this brochure.

All measurements are approximate and the buyer is responsible for verifying all data provided.



Pender Island • Saturna Island • Vancouver Island
www.DocksideRealty.ca
info@DocksideRealty.ca • 250-629-3383