

Homesteader's Haven Acreage!



2337 Otter Bay Rd



Homesteader's Haven on 2.26 Sunny Acres with Ocean Views! Nestled on 2.26 level, sun-drenched acres, this charming 3BR, 2BA country farmhouse, featuring approximately 1250 square feet of thoughtfully updated living space, invites you to embrace a fully sustainable lifestyle. Infrastructure has been upgraded with energy efficiency in mind, including a wood cookstove in the kitchen in combination with hot water tank & hydronic in-floor radiant heating. The property showcases a detached double garage/workshop with separate electrical service, an established, fully fenced orchard, a giant greenhouse, a chicken coop, plus vibrant gardens, all meticulously cultivated by the current owners. Water is abundant here, with the benefit of an artesian-like well complemented by three large 2500-gallon storage tanks, ideal for supporting market gardening or serious homesteading. With the groundwork already laid, you can step into this idyllic dream property & live off the land like the good old days!



Dockside Realty
Gulf Islands Vancouver Island

Pender Island • Saturna Island • Vancouver Island

www.DocksideRealty.ca

info@DocksideRealty.ca • 250-629-3383

Property Details



2337 Otter Bay Rd



Year Built (est):
1974

Lot Acres: 2.26

Bedrooms: 3

Bathrooms: 2

Fin SqFt: 1,250

Unfin SqFt: 575

Bsmt: Crawl space

Water: Drilled well

Waste: Septic system

Driveway: Gravel/dirt

Foundation:
Concrete Poured

Roof: Metal

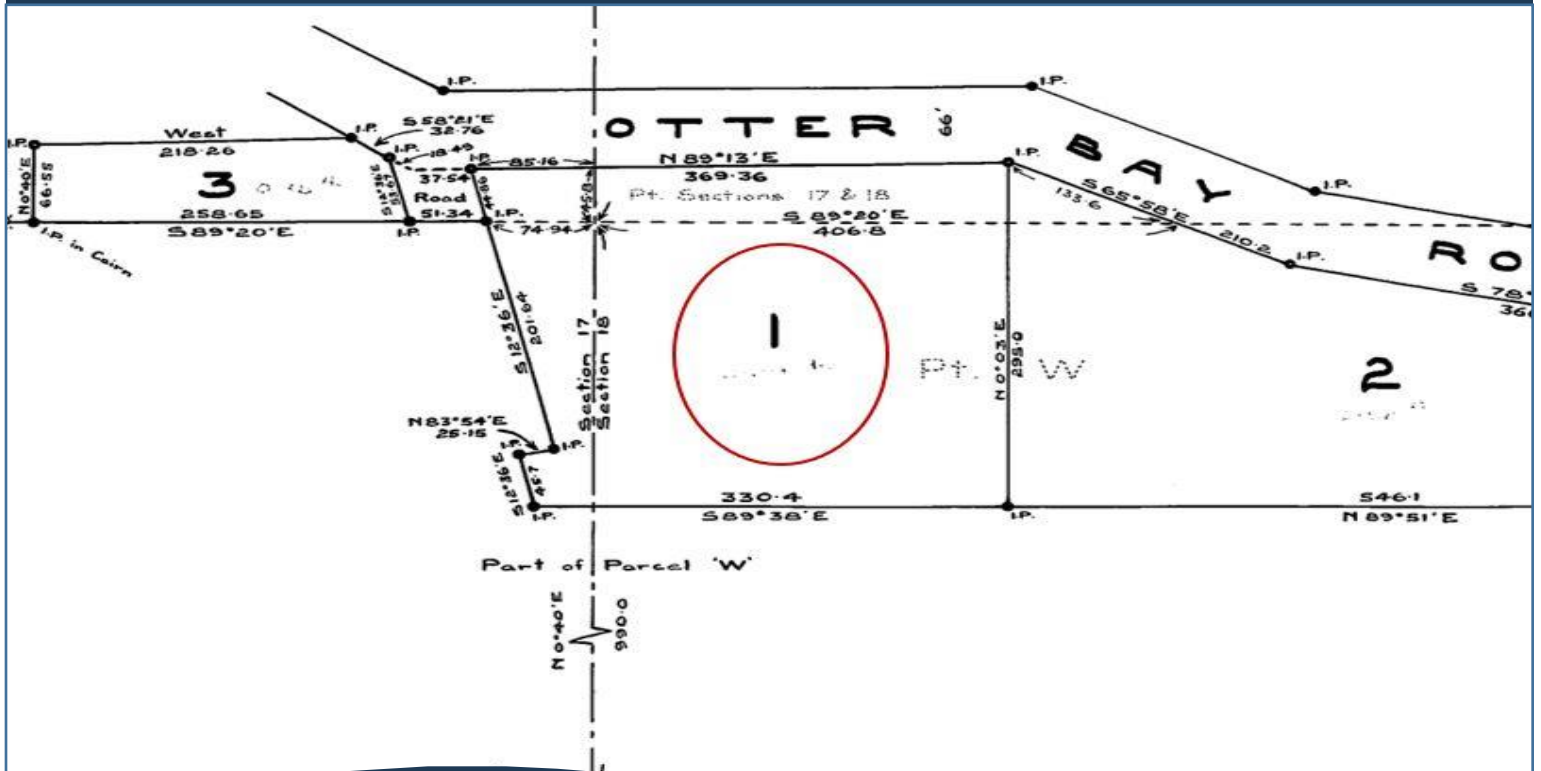
Ext Fin: Wood

Heat: Baseboard,
Electric, Radiant,
Wood

Lot Features:

- Ocean views
- Sunny SW facing
- Acreage
- Double garage
- Close to ferries,
Community Hall,
Hope Bay with shops
and restaurant, golf
course & beaches.

Plot Plan and Aerial View



2337 Otter Bay Rd



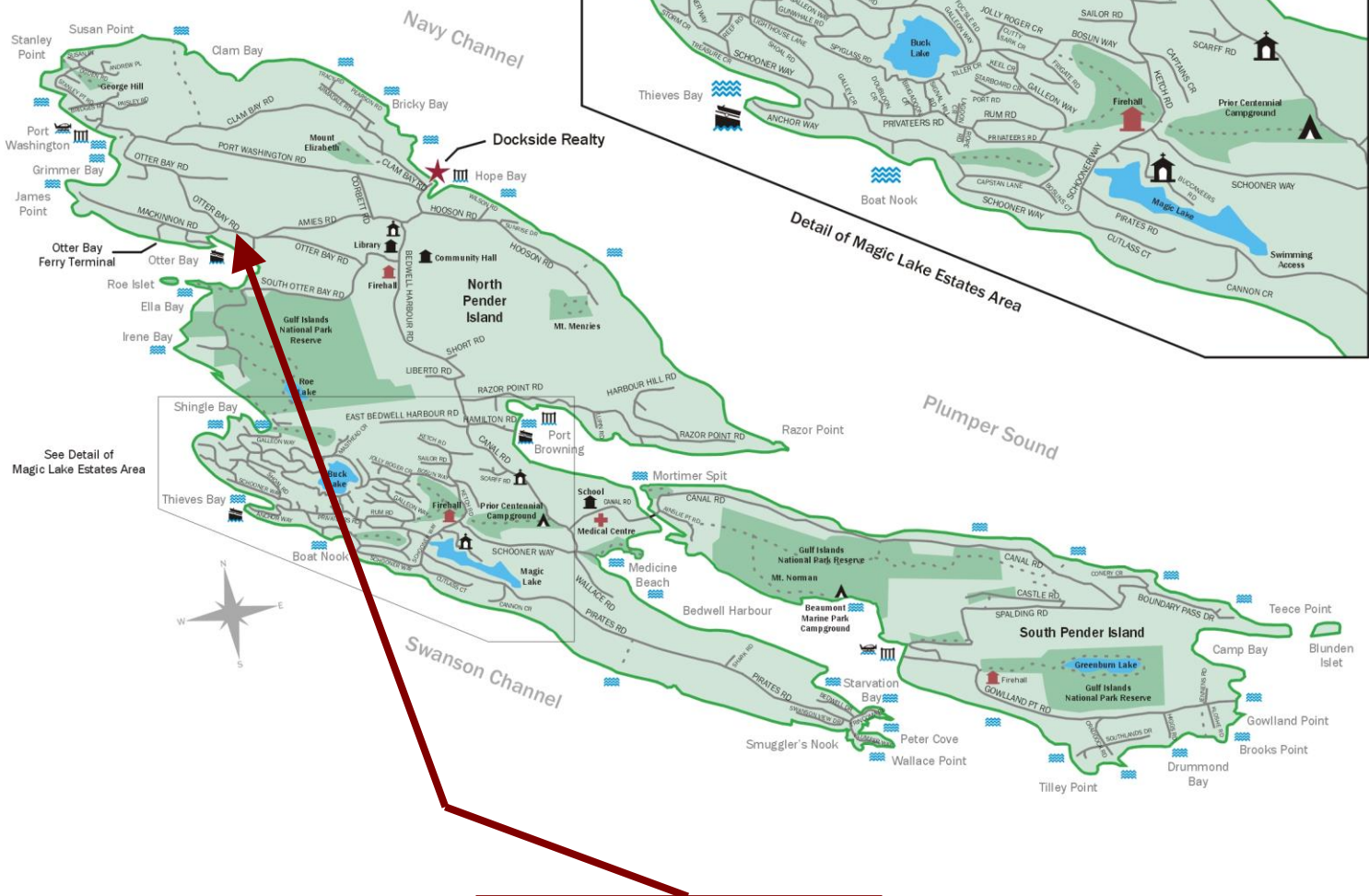
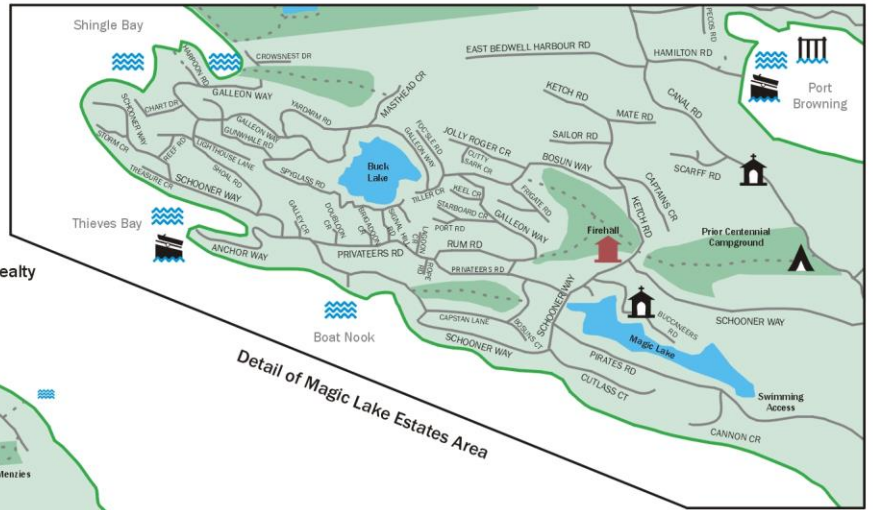
Pender Island • Saturna Island • Vancouver Island

www.DocksdeRealty.ca

info@DocksdeRealty.ca • 250-629-3383

Pender Islands Map

Pender Islands British Columbia, Canada



**Subject Property
2337 Otter Bay Rd**

- Dockside Realty
- Public Wharf
- Boat Launch
- Float Plane
- Firehall
- Medical Centre
- Municipal
- Place of Worship
- Campground
- Walking Trail
- Ocean Access/View

Map courtesy of Dockside Realty. Design Copyright © 2012 Minsky Designs www.minskydesigns.com. All rights reserved.

DISCLAIMER: While every effort is made to provide reliable information, Dockside Realty Ltd. makes no representations or warranties as to the accuracy of this brochure.

All measurements are approximate and the buyer is responsible for verifying all data provided.



Pender Island • Saturna Island • Vancouver Island

www.DocksideRealty.ca

info@DocksideRealty.ca • 250-629-3383