

Magic Lake Estates Lot!



2630 Gunwhale Rd



Shingle Bay

2630
Gunwhale Rd

Located on a quiet road in popular Magic Lake Estates, this larger than average lot on beautiful Pender Island. is 0.73 of an acre and is nicely treed with Arbutus and giant Fir. Owner has spent approximately 60K in improvements that include roughed in driveway, landscaping, milling, new storage shed for lumber that is straight from the property (Inventory sheet of lumber available) Comes with 20ft clean, modern interior trailer to instantly enjoy while you build. (Please review owners concept design) Hydro, internet, CRD water available at the street. Close to many walking trails, Shingle Bay public beach access, plus owners have access to Thieves Bay Marina with very reasonable moorage rates.



Dockside Realty
Gulf Islands Vancouver Island

Pender Island • Saturna Island • Vancouver Island

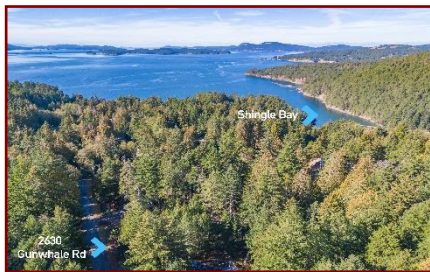
www.DocksideRealty.ca

info@DocksideRealty.ca • 250-629-3383

Property Details



2630 Gunwhale Rd



Lot Acres: 2.00.73

Water: Municipal water at lot line

Waste: Septic Required

Services: At lot line

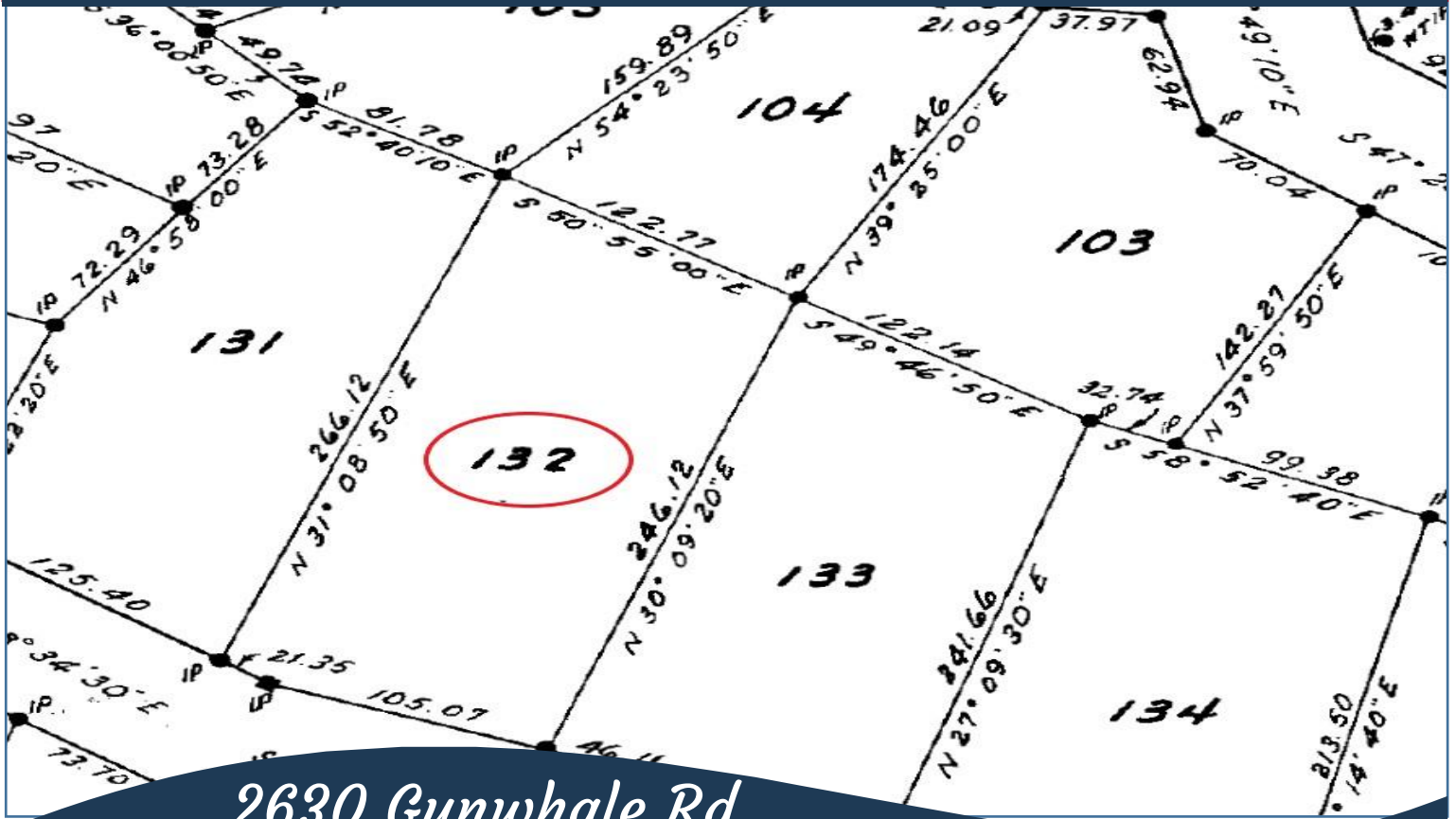
Driveway: Roughed in

Bldg Scheme: Available

Lot Features:

- Comes with a 20 ft trailer
- New Storage Shed
- Milled lumber from the property
- Treed
- Partially landscaped

Plot Plan and Aerial View

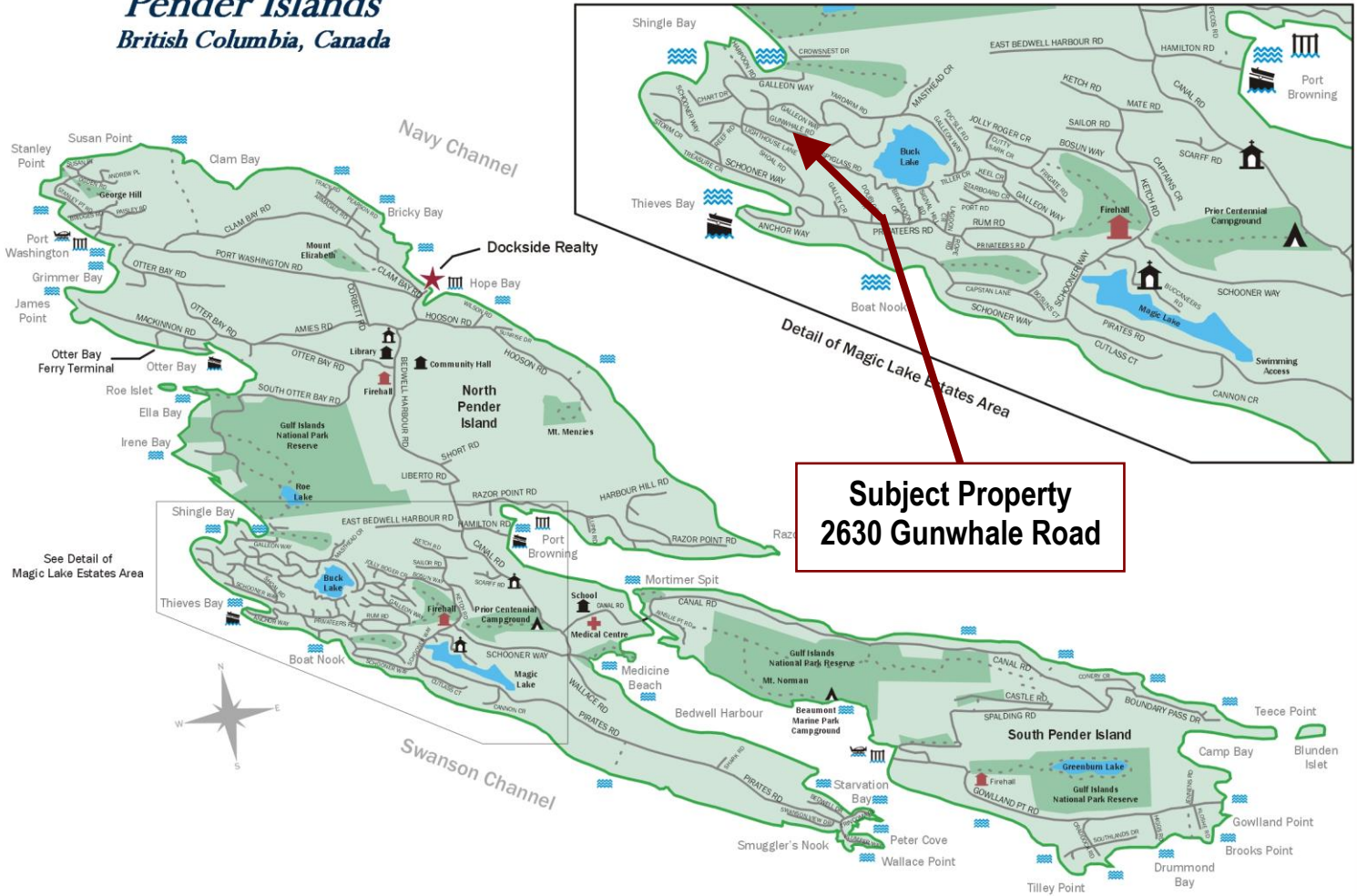


2630 Gunwhale Rd



Pender Islands Map

Pender Islands British Columbia, Canada



**Subject Property
2630 Gunwhale Road**

- Dockside Realty
- Public Wharf
- Boat Launch
- Float Plane
- Firehall
- Medical Centre
- Municipal
- Place of Worship
- Campground
- Walking Trail
- Ocean Access/View

Map courtesy of Dockside Realty. Design Copyright © 2012 Minsky Designs www.minskydesigns.com. All rights reserved.

DISCLAIMER: While every effort is made to provide reliable information, Dockside Realty Ltd. makes no representations or warranties as to the accuracy of this brochure.
All measurements are approximate and the buyer is responsible for verifying all data provided.



Pender Island • Saturna Island • Vancouver Island
www.DocksideRealty.ca
info@DocksideRealty.ca • 250-629-3383