

Charming Log Home!



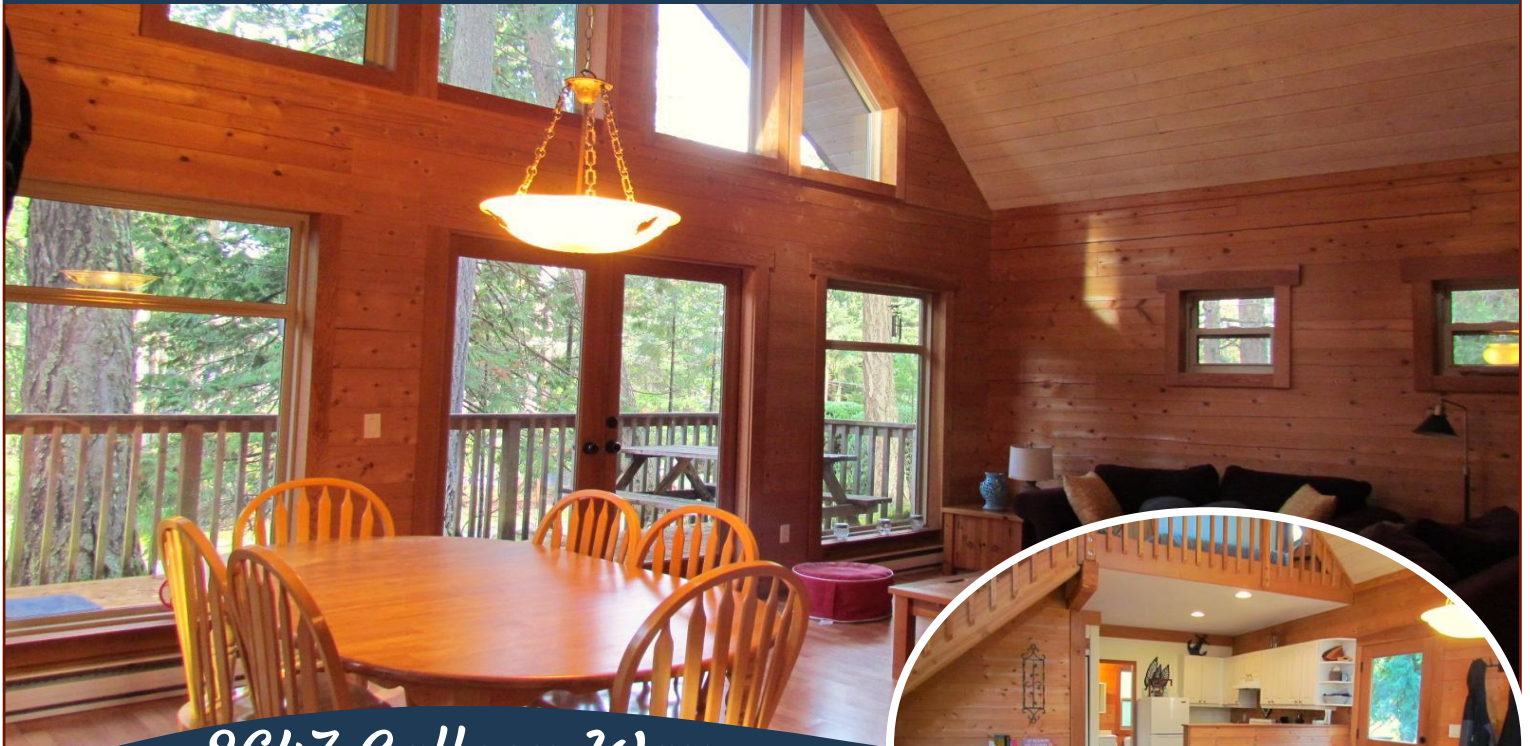
2647 Galleon Way



Charming Log Home Near Shingle Bay – Perfect for Outdoor Enthusiasts. This beautifully maintained log home, built in 2008, still looking brand new, offers the perfect blend of rustic charm and modern comfort. Nestled on a serene west-facing lot, the home provides easy access to nature's amenities. Spacious layout comfortably sleeps 6, making it perfect for family getaways. 2 bed 2 bath, new metal roof and hot water tank. Laundry Hookup in place. Just a 5-minute walk to the tranquil shores of Single Bay. With a nearby kayak launch, water adventures are just around the corner! Whether you're looking for a weekend escape or a year-round home, this property offers the perfect balance of relaxation and adventure. Don't miss your chance to own this gorgeous log home in a highly sought-after location! Boat and trailer available for purchase. All measurements are approximate, buyers and their realtors to verify.



Property Details



2647 Galleon Way



Year Built (est):
2008

Lot Acres: 0.33

Bedrooms: 2

Bathrooms: 2

Fin SqFt: 982

Unfin SqFt: 326

Bsmt: Crawl space

Water: Municipal

Waste: Septic system

Driveway: Gravel/dirt

Foundation:
Concrete Poured

Roof: Metal

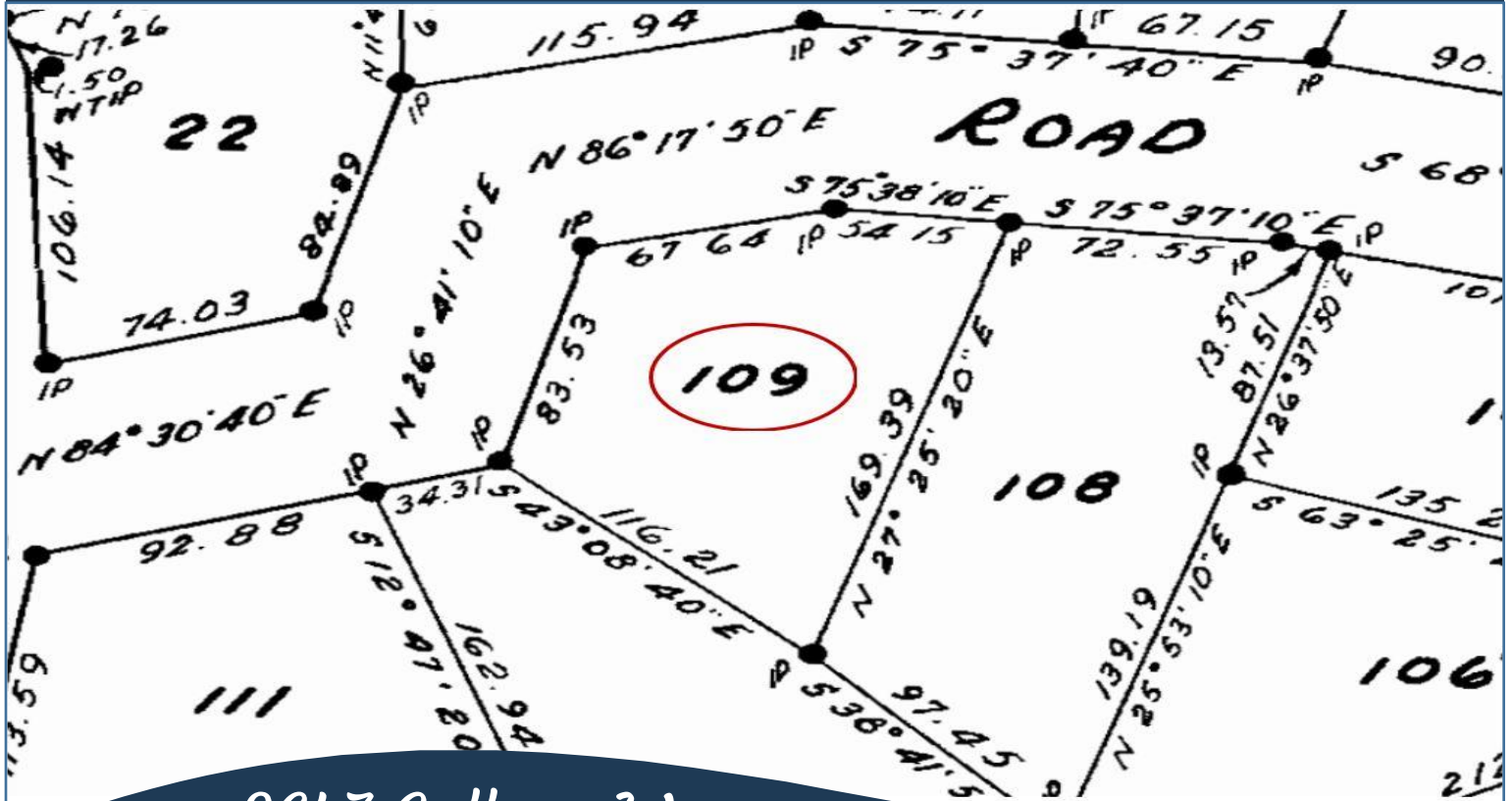
Ext Fin: Wood

Heat: Electric

Lot Features:

- Private setting
- West facing
- Close to ocean with kayak launch
- New metal roof
- Magic Lake Estates with access to Thieves Bay marina & tennis courts

Plot Plan and Aerial View



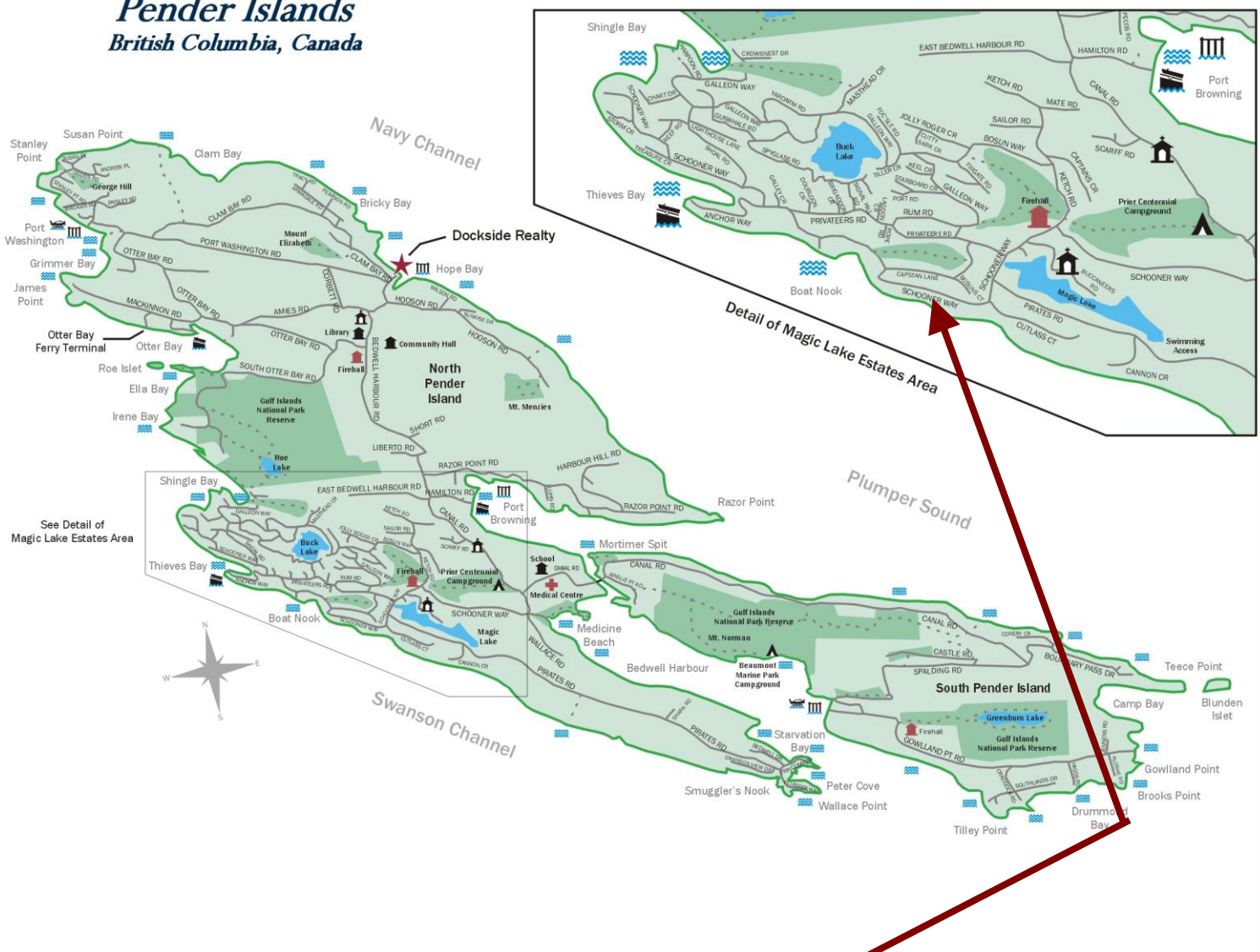
2647 Galleon Way

Aerial - 2647 Galleon Way



Pender Islands Map

Pender Islands British Columbia, Canada



**Subject Property
2647 Galleon Way**

- Dockside Realty
- Public Wharf
- Boat Launch
- Float Plane
- Firehall
- Medical Centre
- Municipal
- Place of Worship
- Campground
- Walking Trail
- Ocean Access/View

Map courtesy of Dockside Realty. Design Copyright © 2012 Minsky Designs www.minskydesigns.com. All rights reserved.

DISCLAIMER: While every effort is made to provide reliable information, Dockside Realty Ltd. makes no representations or warranties as to the accuracy of this brochure.

All measurements are approximate and the buyer is responsible for verifying all data provided.

Pender Island • Saturna Island • Vancouver Island

www.DocksideRealty.ca

info@DocksideRealty.ca • 250-629-3383

