

Central Magic Lake Lot!



2672 Galleon Way



Your perfect lot in Magic Lake Estates! This lot has municipal sewer, water and services at the lot line ready for your new build. Trees provide a quiet forest area - or clear for a garden or patio in the sunshine. Enjoy the many walking trails and nearby beaches, Magic Lake and disc golf course. Owners are eligible for low moorage rates at Thieves Bay Marina and access to the tennis courts. This centrally located lot will not last long so make your Pender Island dream come true soon. Accepting offers for review until March 25th at 1pm. Please leave offers open until March 26th at 1 pm.

Property Details



2672 Galleon Way



Lot Acres: 0.40

Water: Municipal

Waste: Sewer to line

Services: At lot line

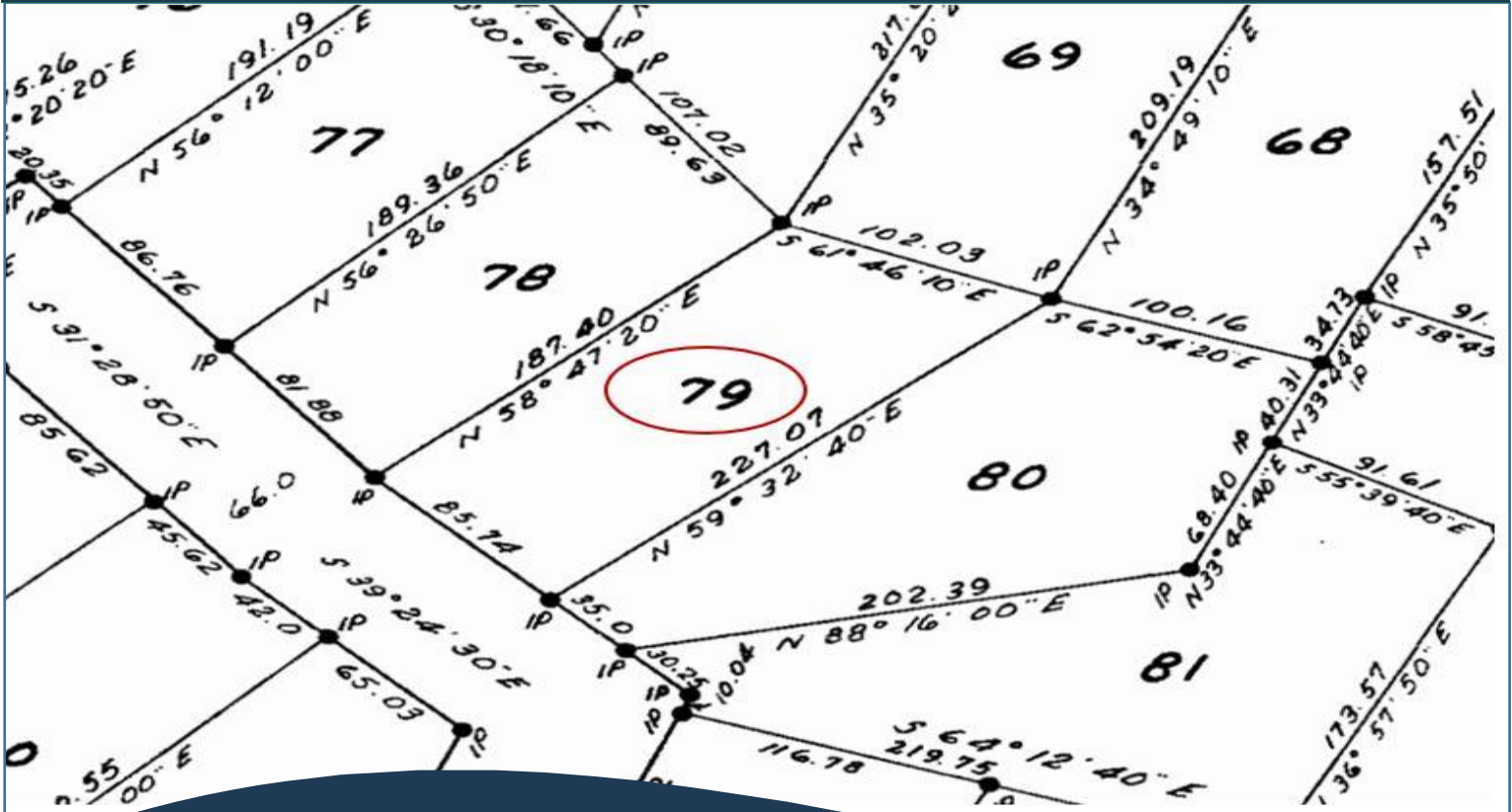
Driveway: None

Bldg Scheme: No

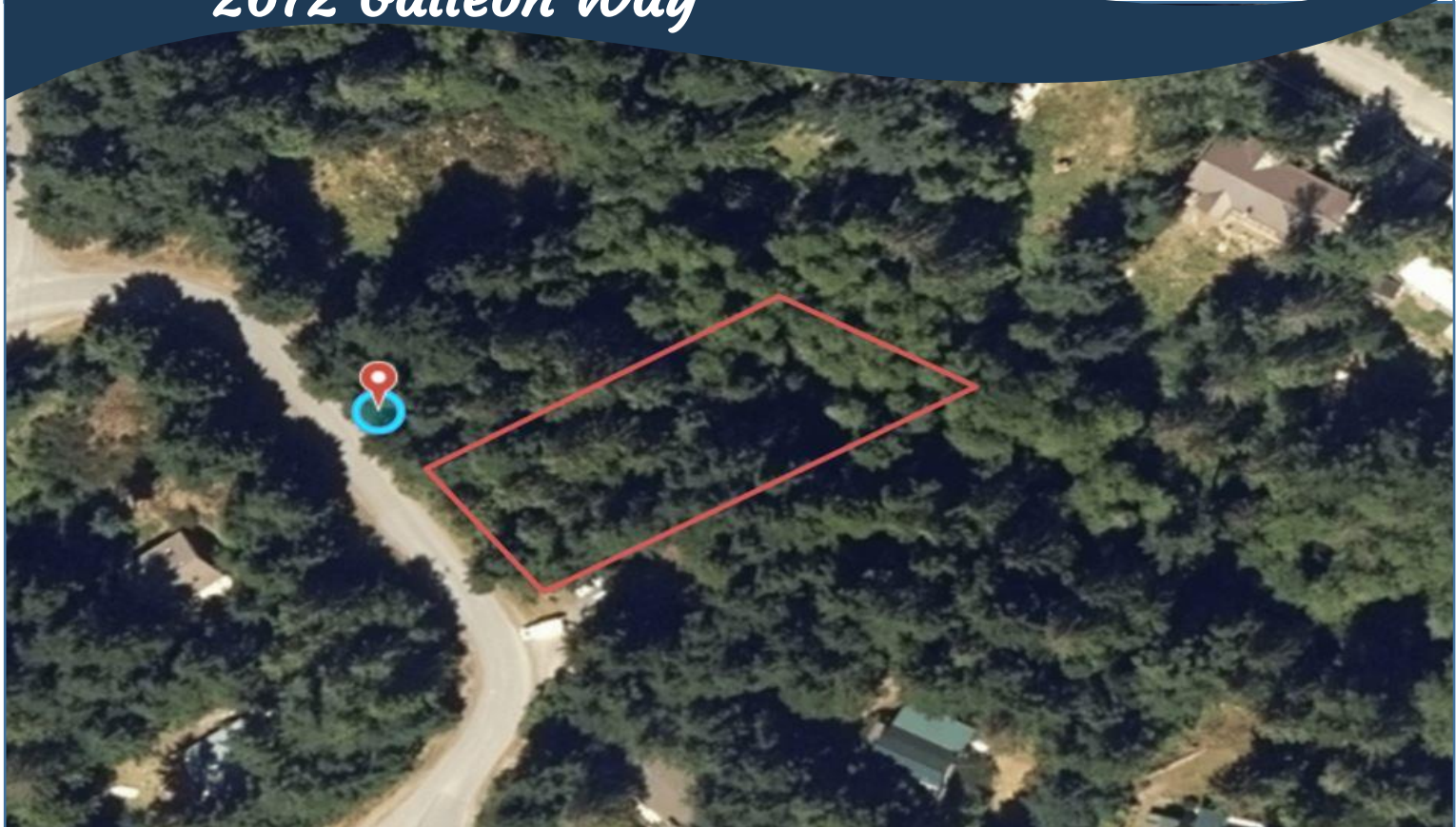
Lot Features:

- Central location
- Easy Access
- Recreation Nearby
- Treed
- Magic Lake Estates with access to Thieves Bay Marina & tennis courts

Plot Plan and Aerial View



2672 Galleon Way

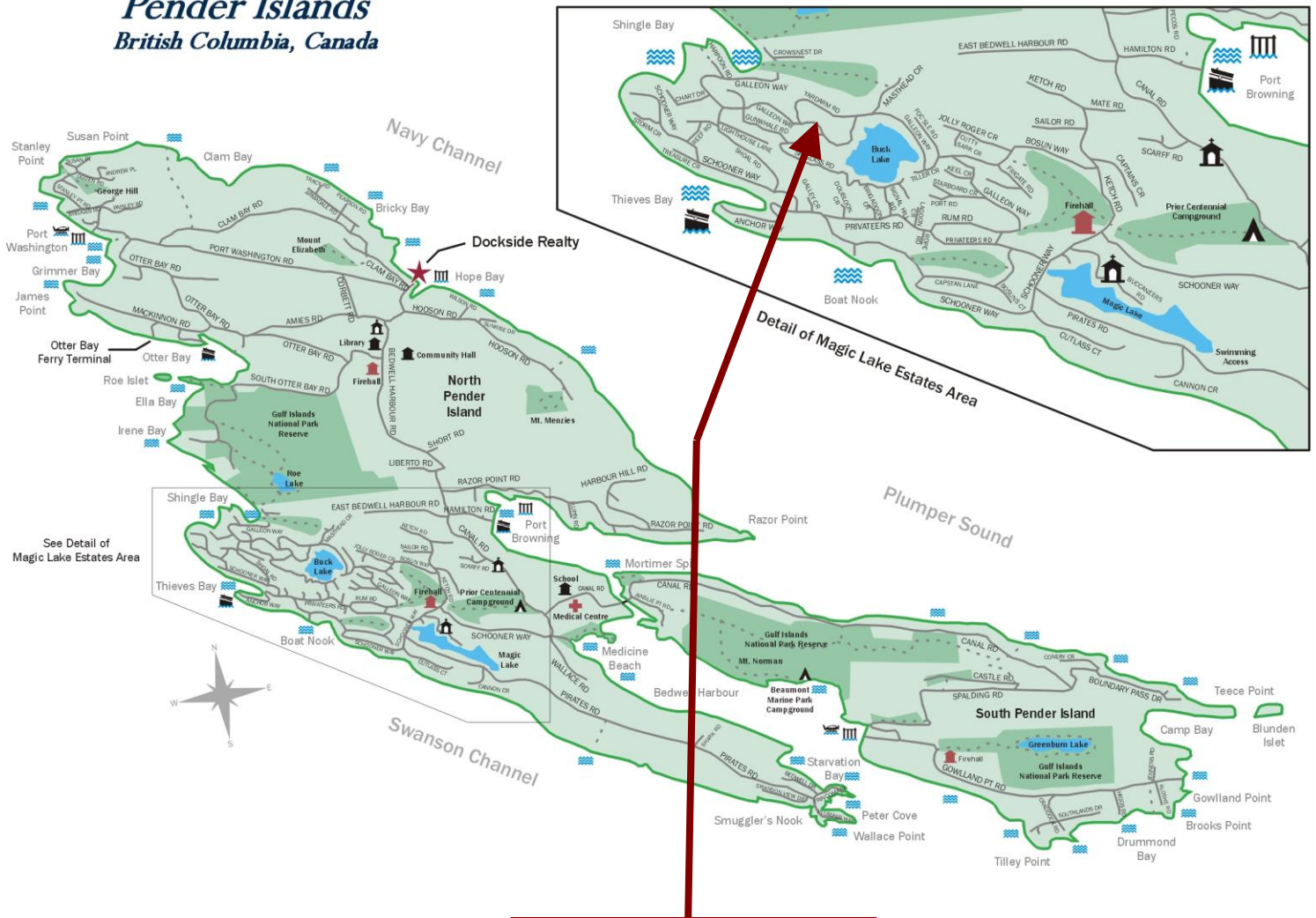


Hope Bay: 250-629-3166
Sidney: 250-656-5062
info@DocksideRealty.ca

Driftwood: 250-629-3383
Saturna: 250-539-2121
www.DocksideRealty.ca

Pender Islands Map

Pender Islands British Columbia, Canada



**Subject Property
2672 Galleon Way**

- Dockside Realty
- Public Wharf
- Boat Launch
- Float Plane
- Firehall
- Medical Centre
- Municipal
- Place of Worship
- Campground
- Walking Trail
- Ocean Access/View

Map courtesy of Dockside Realty. Design Copyright © 2012 Minsky Designs www.minskydesigns.com. All rights reserved.

DISCLAIMER: While every effort is made to provide reliable information, Dockside Realty Ltd. makes no representations or warranties as to the accuracy of this brochure.
All measurements are approximate and the buyer is responsible for verifying all data provided.



Hope Bay: 250-629-3166
 Sidney: 250-656-5062
 info@DocksideRealty.ca

Driftwood: 250-629-3383
 Saturna: 250-539-2121
 www.DocksideRealty.ca