

Beautiful Oceanfront Home!



2701 Yawl Lane



This South-facing oceanfront home, a once-in-a-lifetime opportunity to experience coastal living at its finest. Boasting over 700 feet of pristine ocean frontage and unparalleled panoramic views, stretching from East to West. Garden beds and fruit trees. Own your own peninsula, with one level living designed to maximize comfort and capture mesmerizing views from every angle. Imagine waking up and stepping out onto your deck, to enjoy the sunrise, or unwinding in the evening with the sun sets. Walk over to the edge, take in the views of Boat Nook. There are large windows that invite natural light across the living spaces. The well-appointed kitchen, dining, and living room seamlessly flow together, creating an ideal space for entertaining or quiet relaxation. The basement workshop provides a creative space to bring your ideas to life, while taking in the awe-inspiring scenery. Additionally, a separate studio (1970's) perched right on the ocean's edge. All measurements are approximate.



Dockside Realty
Gulf Islands • Vancouver Island

Pender Island • Saturna Island • Vancouver Island

www.DocksideRealty.ca

info@DocksideRealty.ca • 250-629-3383

Property Details



2701 Yawl Lane



Year Built (est):
1984

Lot Acres: 0.75

Bedrooms: 3

Bathrooms: 1

Fin SqFt: 1,900

Unfin SqFt: 675

Bsmt: Partially Unfinished, Walk-out access with windows

Bsmt Height: 7 ft

Water: Municipal

Waste: Sewer

Driveway: Paved

Foundation:
Concrete Poured

Roof: Membrane

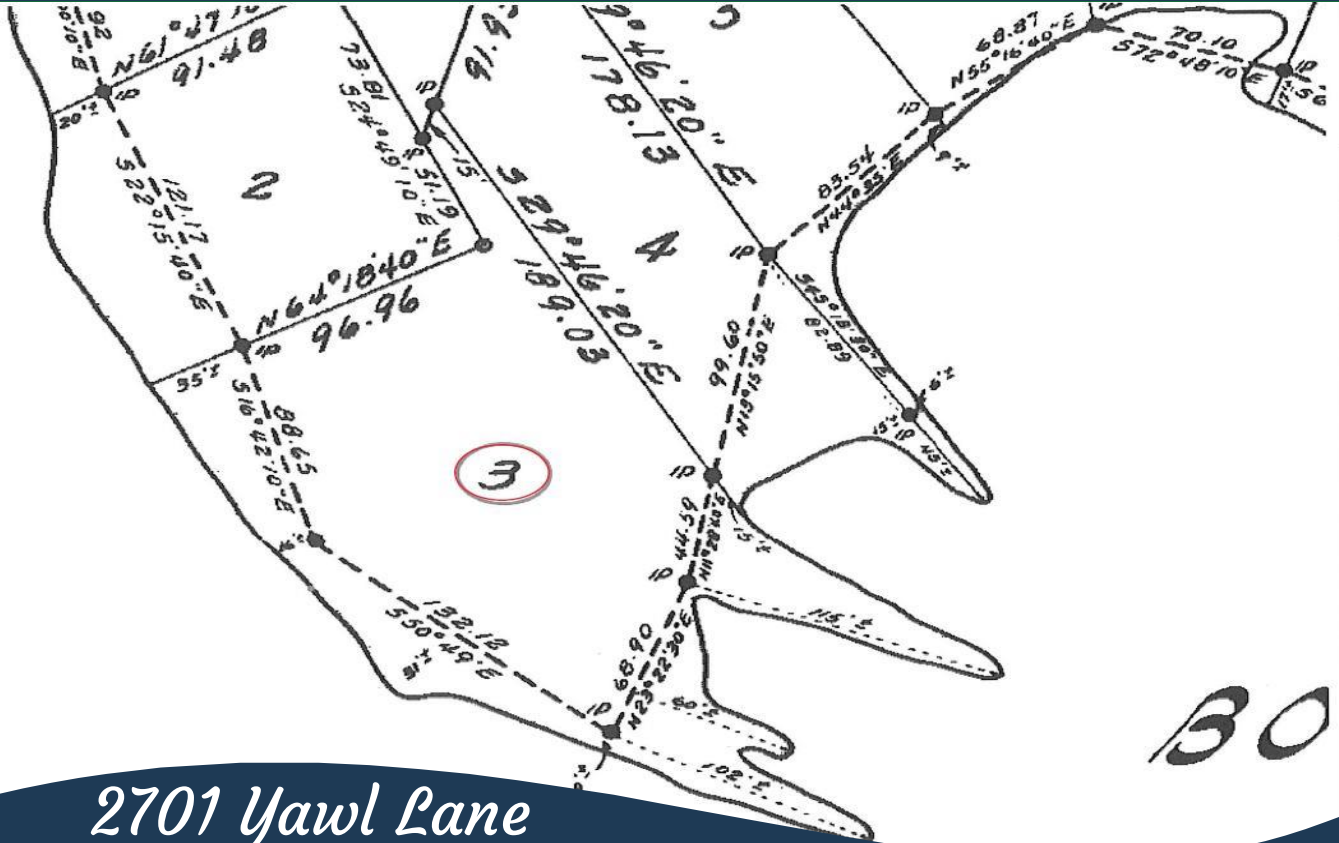
Ext Fin: Wood

Heat: Baseboard, Electric, Wood

Lot Features:

- Separate Studio
- Sunny south facing
- Panoramic ocean views
- Magic Lake Estates with access to Thieves Bay marina & tennis courts

Plot Plan and Aerial View



2701 Yawl Lane

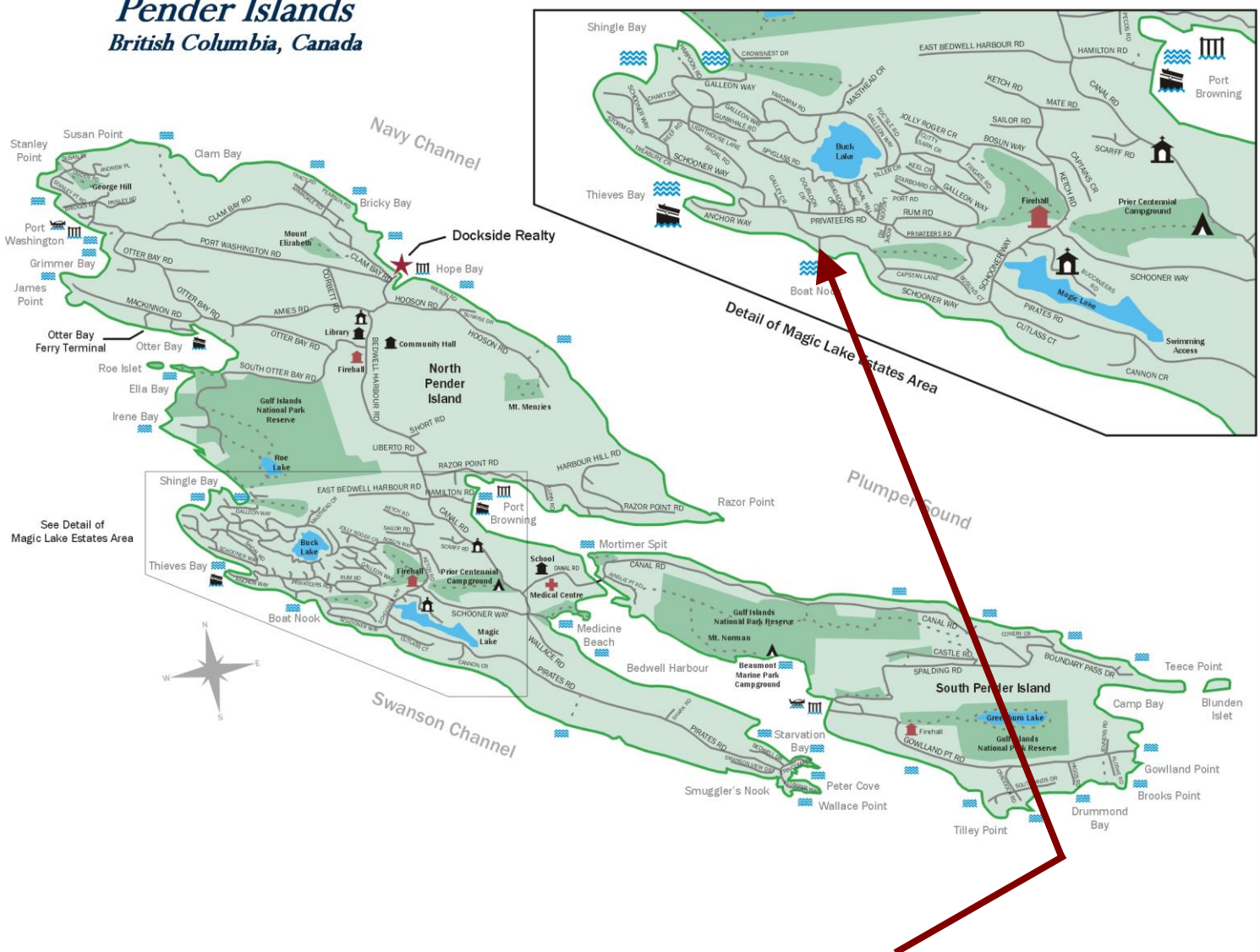


1:1,000



Pender Islands Map

Pender Islands British Columbia, Canada



**Subject Property
2701 Yawl Lane**

- Dockside Realty
- Public Wharf
- Boat Launch
- Float Plane
- Firehall
- Medical Centre
- Municipal
- Place of Worship
- Campground
- Walking Trail
- Ocean Access/View

Map courtesy of Dockside Realty. Design Copyright © 2012 Minsky Designs www.minskydesigns.com. All rights reserved.

DISCLAIMER: While every effort is made to provide reliable information, Dockside Realty Ltd. makes no representations or warranties as to the accuracy of this brochure.

All measurements are approximate and the buyer is responsible for verifying all data provided.



Pender Island • Saturna Island • Vancouver Island
www.DocksideRealty.ca
info@DocksideRealty.ca • 250-629-3383