

Sunny & South-facing Lot!



2704 Doubloon Crescent



Located on a quiet, no-thru road in Magic Lake Estates, this fantastic property has a roughed in driveway to a prepared building site. Water, sewer, hydro & cable connections are at the lot line. Water & sewer connections were initially prepaid, which represents a significant development cost savings (buyer to verify). With easy access to tennis courts, several beach access points, walking trails, parks, marinas & shopping, this is the perfect place to build your island dream home. Walking this property in person won't leave you disappointed!

Property Details



2704 Doubloon Crescent



Lot Acres: 0.78

Water: Municipal

Potability Test: No

Waste: Sewer

Services: At lot line

Driveway: Roughed in

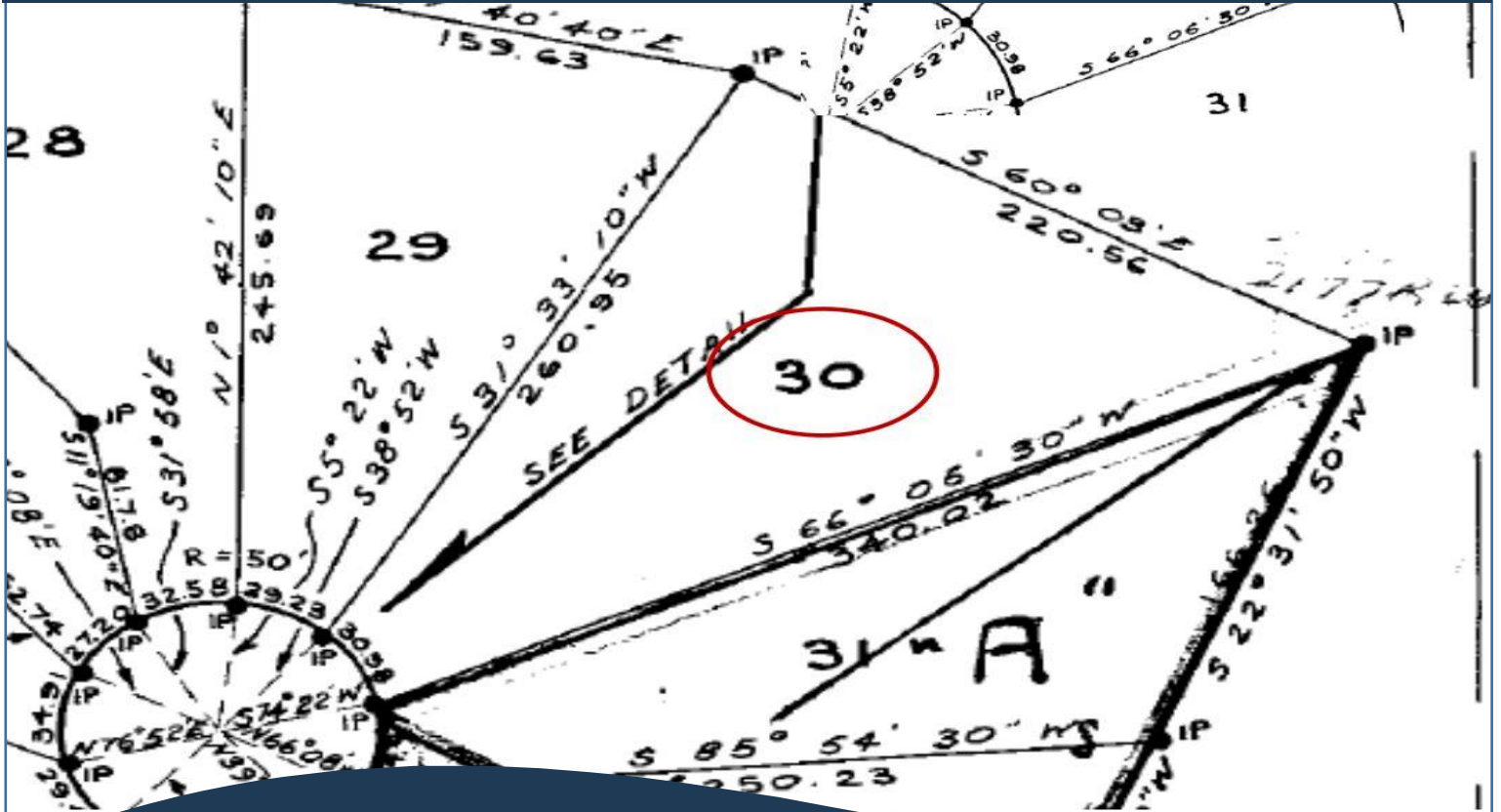
Bldg Scheme: No

Lot Features:

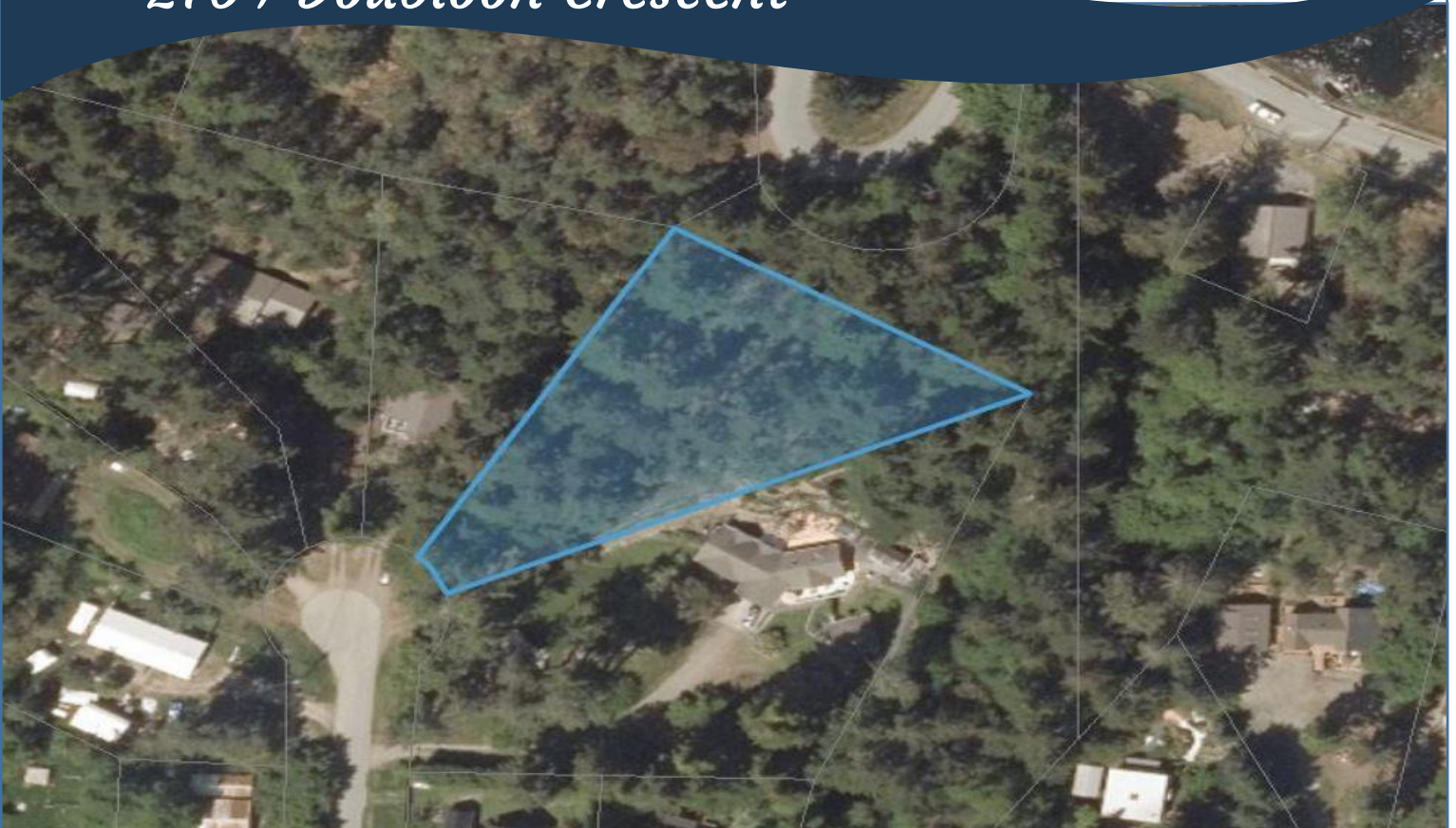
- Quiet
- Southern Exposure
- Elevated
- Cul de sac
- Wooded lot
- Park Setting
- Private
- Hillside



Plot Plan and Aerial View



2704 Doubloon Crescent



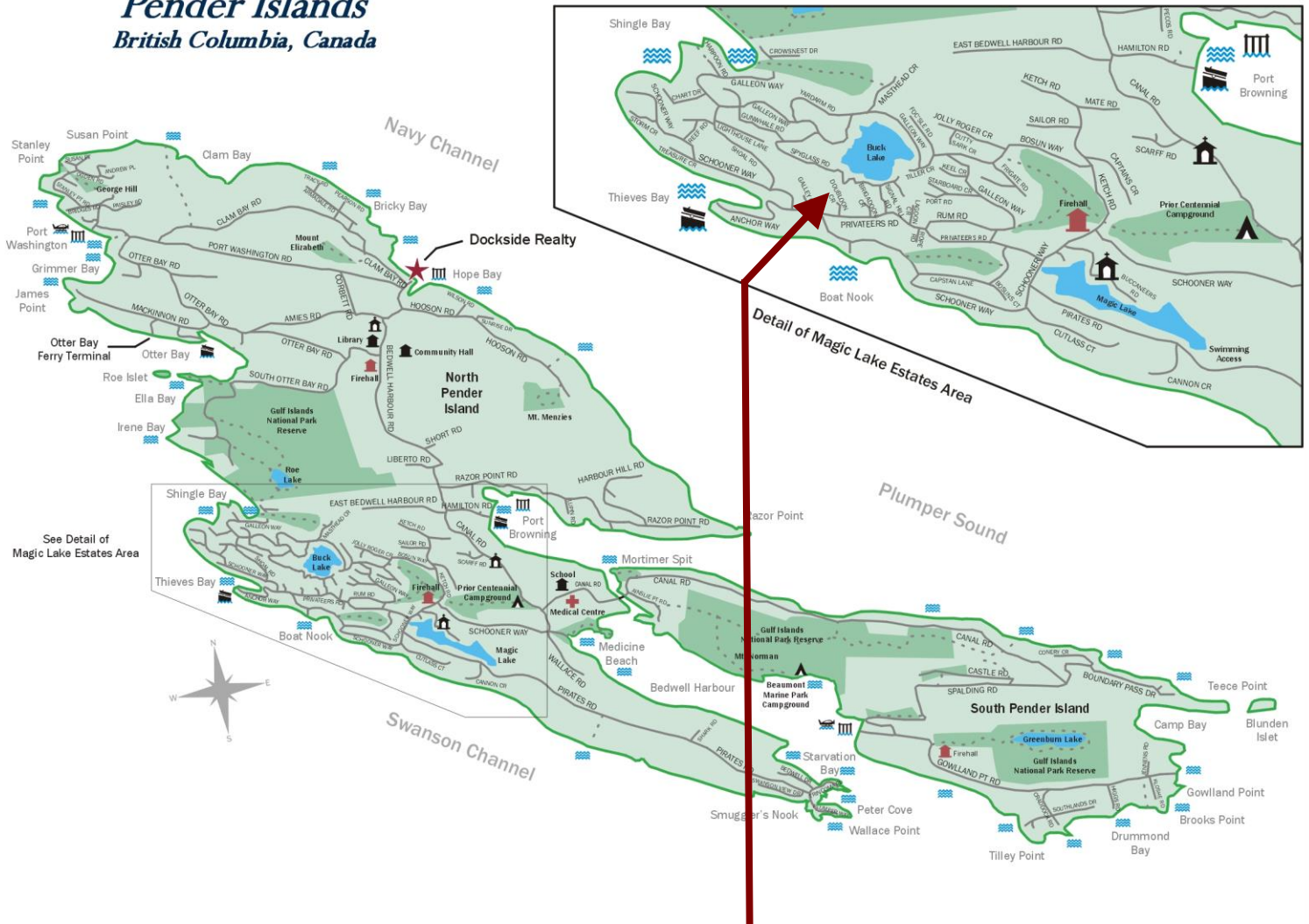
Pender Island • Saturna Island • Vancouver Island

www.DocksdeRealty.ca

info@DocksdeRealty.ca • 250-629-3383

Pender Islands Map

Pender Islands British Columbia, Canada



Subject Property
2704 Doubloon Crescent

- ★ Dockside Realty
- Public Wharf
- Boat Launch
- Float Plane
- Firehall
- Medical Centre
- Municipal
- Place of Worship
- Campground
- Walking Trail
- Ocean Access/View

Map courtesy of Dockside Realty. Design Copyright © 2012 Minsky Designs www.minskydesigns.com. All rights reserved.

DISCLAIMER: While every effort is made to provide reliable information, Dockside Realty Ltd. makes no representations or warranties as to the accuracy of this brochure.

All measurements are approximate and the buyer is responsible for verifying all data provided.



Pender Island • Saturna Island • Vancouver Island

www.DocksideRealty.ca

info@DocksideRealty.ca • 250-629-3383