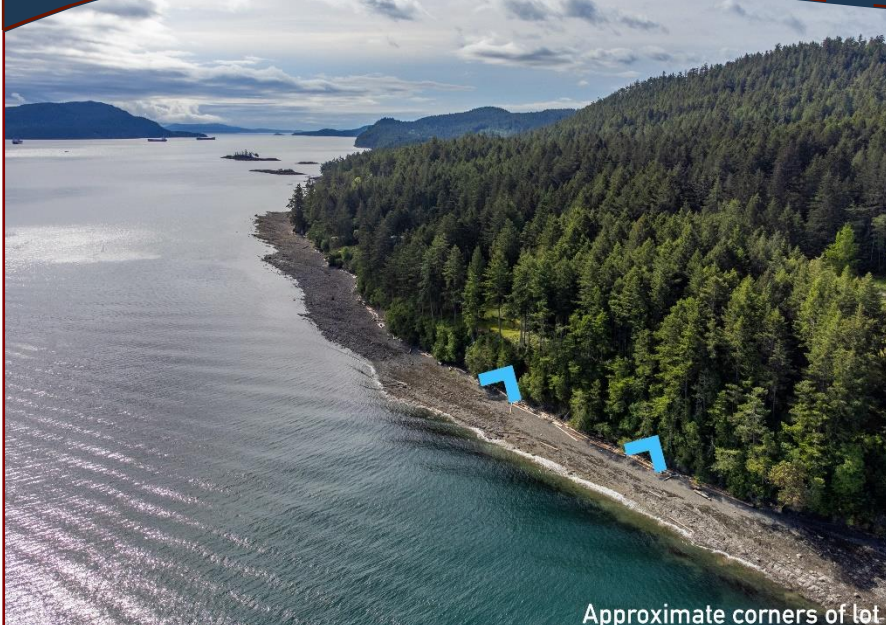


Exceptional Oceanfront Acreage!



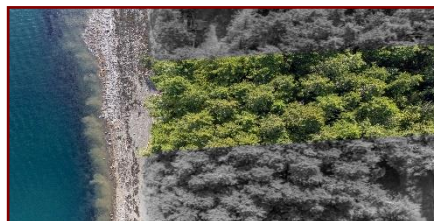
3202 Armadale Rd



Approximate corners of lot



Approximate corners of lot



Nestled at the end of a quiet country lane, this beautiful 1.5-acre oceanfront property offers the perfect sanctuary from the stresses of a busy world. The peaceful, forested setting offers exceptional views over Navy Channel and beyond. There are several public beach trails nearby and with the proper approval to construct; a set of stairs to the beach would allow you your own private access. This extremely desirable location rarely becomes available and offers a wonderful sense of privacy in a natural setting. Property is primarily level, very usable and should be easier to develop than many other Island options. A drilled well is in place and an easement provides you the opportunity to construct your driveway. Services at road include: Hydro, Cable & Internet; Septic system required. Vendor requests all viewings take place accompanied by a licensed Realtor.

Dockside Realty
Gulf Islands • Vancouver Island

Pender Island • Saturna Island • Vancouver Island

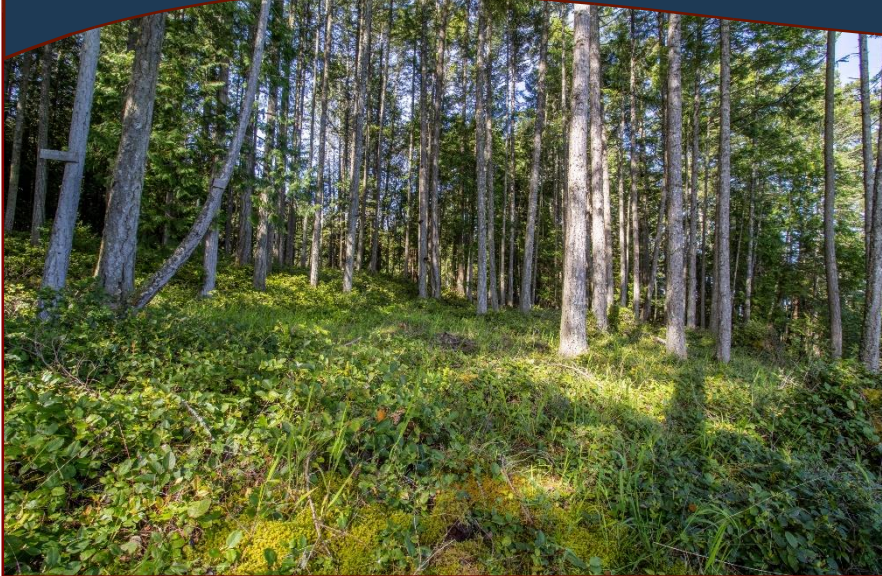
www.DocksideRealty.ca

info@DocksideRealty.ca • 250-629-3383

Property Details



3202 Armadale Rd



Lot Acres: 1.5

Water: drilled well

Waste: Septic
System Required

Services: At lot line

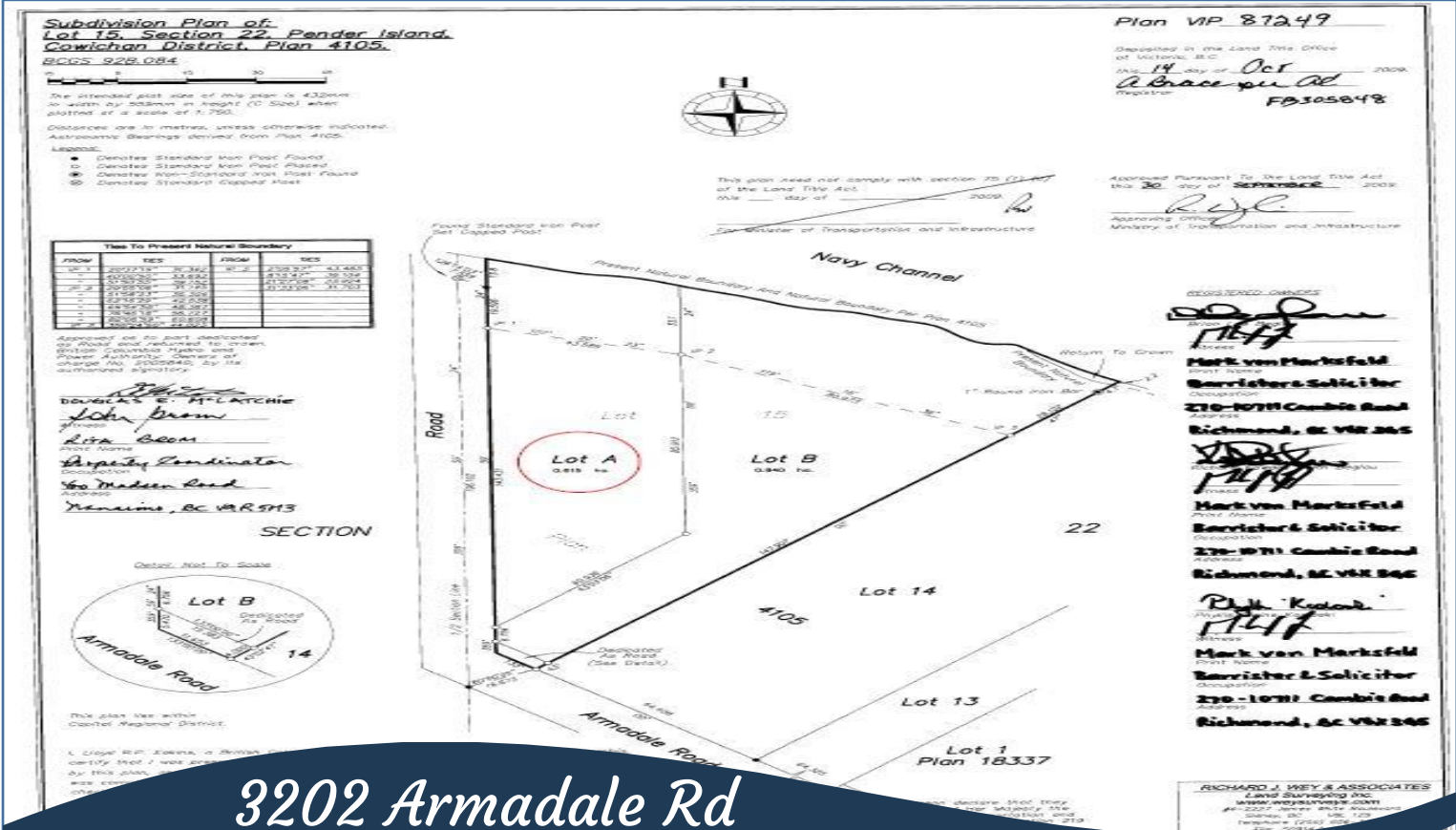
Driveway: Gravel

Bldg Scheme: No

Lot Features:

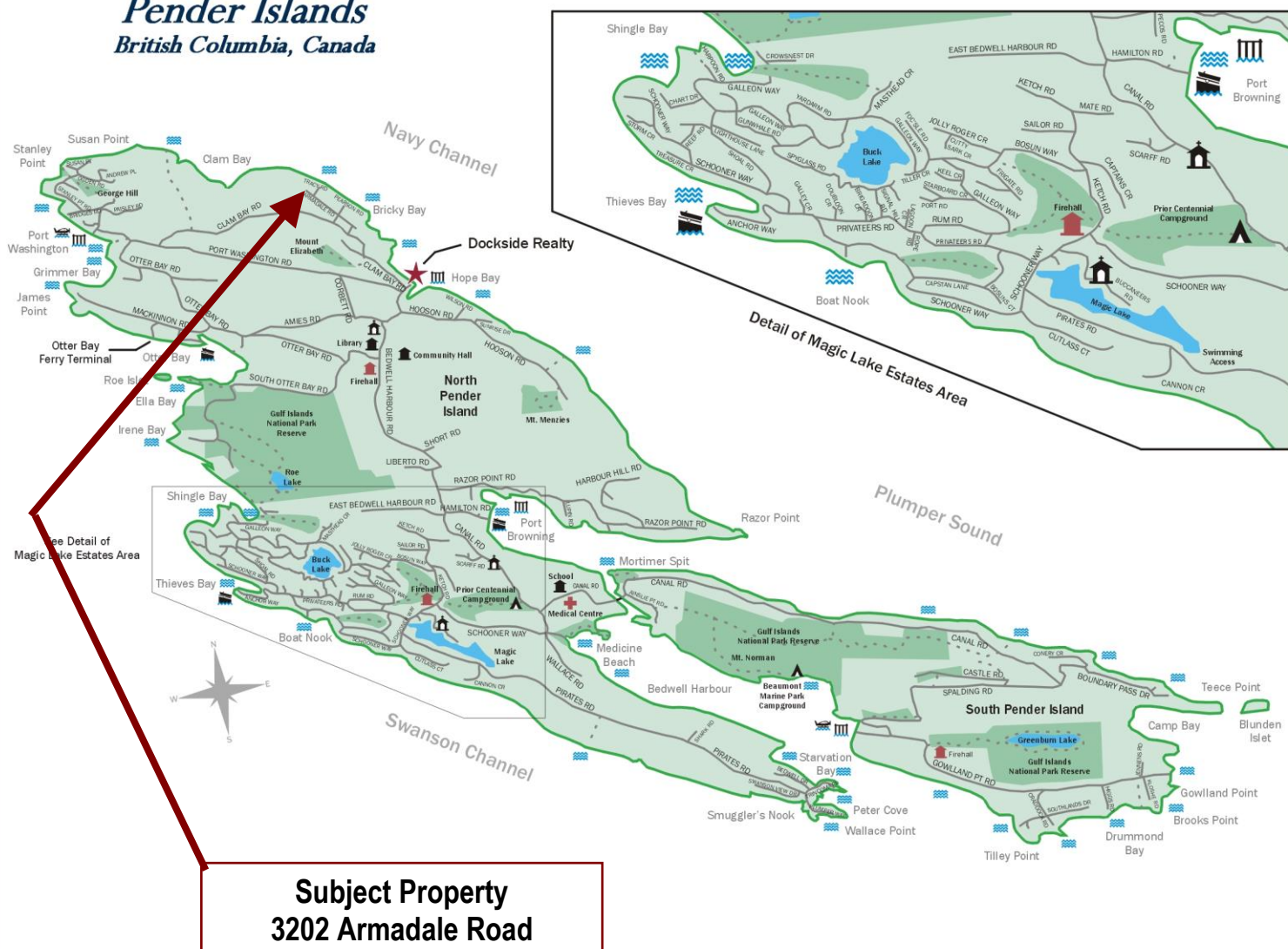
- Oceanfront
- Wooded lot
- Private Property
- No through road
- Primarily Level

Plot Plan and Aerial View



Pender Islands Map

Pender Islands British Columbia, Canada



Subject Property
3202 Armadale Road

- ★ Dockside Realty
- Public Wharf
- Boat Launch
- Float Plane
- Firehall
- Medical Centre
- Municipal
- Place of Worship
- Campground
- Walking Trail
- Ocean Access/View

Map courtesy of Dockside Realty. Design Copyright © 2012 Minsky Designs www.minskydesigns.com. All rights reserved.

DISCLAIMER: While every effort is made to provide reliable information, Dockside Realty Ltd. makes no representations or warranties as to the accuracy of this brochure.

All measurements are approximate and the buyer is responsible for verifying all data provided.



Pender Island • Saturna Island • Vancouver Island

www.DocksideRealty.ca

info@DocksideRealty.ca • 250-629-3383