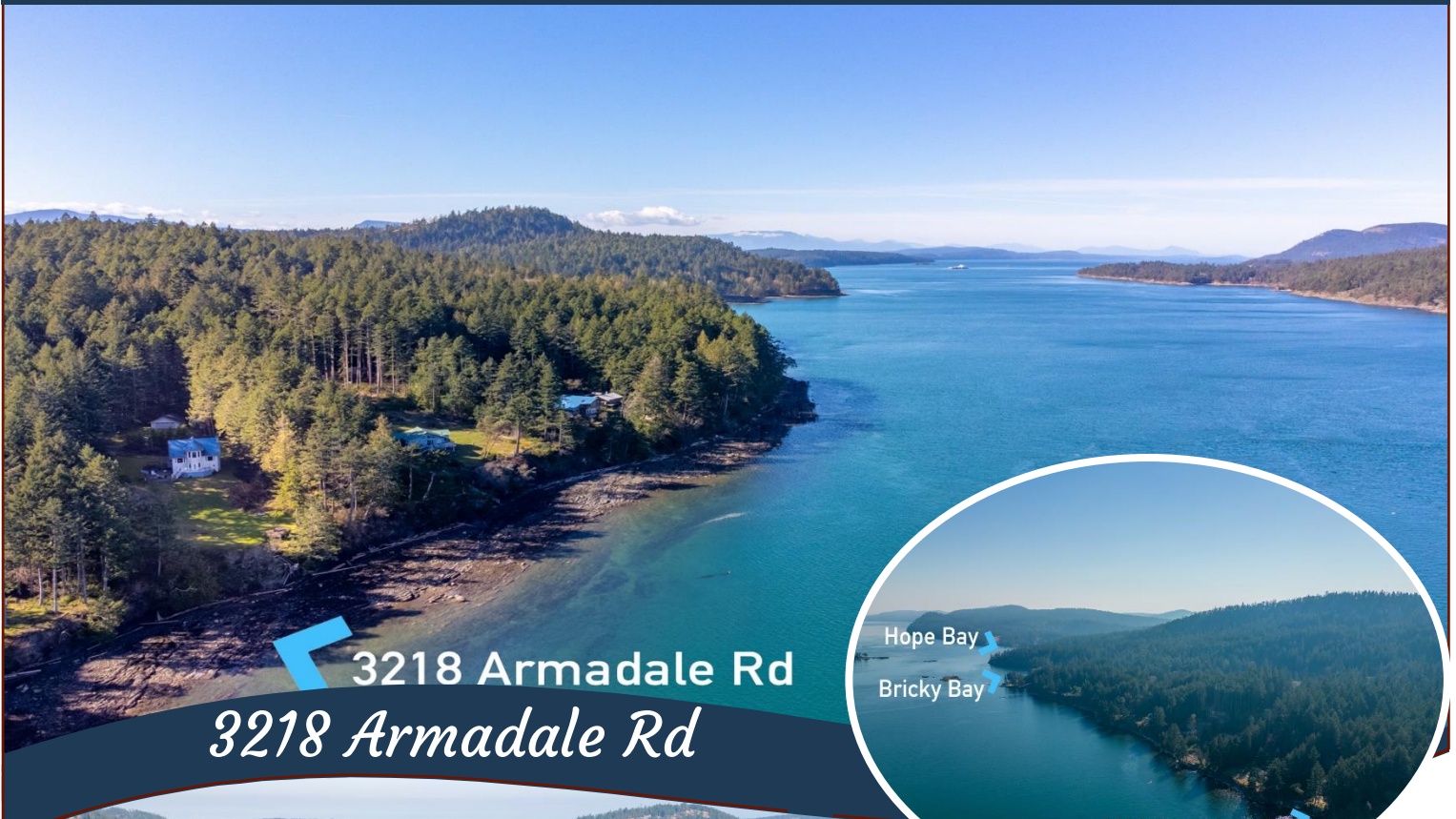
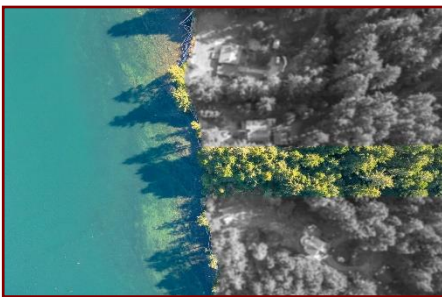


# Private Oceanfront Acreage!

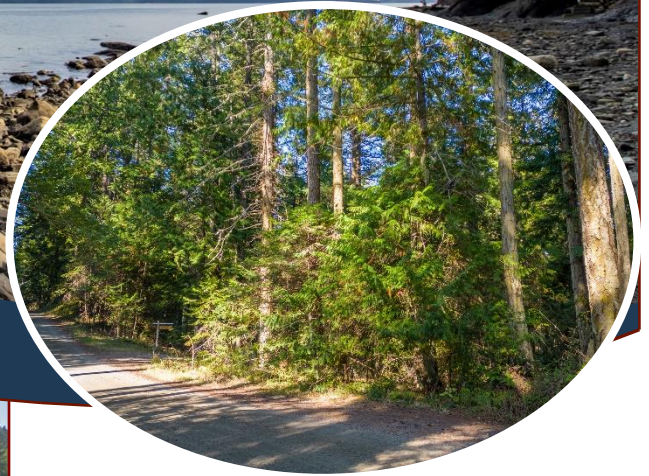


3218 Armadale Rd  
*3218 Armadale Rd*



**Untouched for many decades & situated near the end of an extremely private, very quiet no-thru road, this beautiful 1.56-acre property with approximately 100-feet of ocean frontage offers plenty of options for eco-friendly development. Delightful, park-like, forested setting, with strands of Cedar & Douglas Fir throughout. Access to the shoreline could be developed & there are also several wonderful beaches to explore within short walking distance. Stunning ocean & mountain views looking out towards Mayne Island & beyond. Seldom do building opportunities come available in this sought after location. The adjacent oceanfront home, MLS 950912, is also for sale by the same owners. Both properties can be purchased jointly for ultimate seaside privacy. Come walk this property to discover its true potential!**

# Property Details



*3218 Armadale Rd*



Approximate lot boundary  
Markers from recent survey on site



**Lot Acres:** 1.56

**Water:** Drilled well

**Waste:** None – septic system needed

**Services:** At lot line

**Driveway:** Gravel

**Bldg Scheme:** No

**Lot Features:**

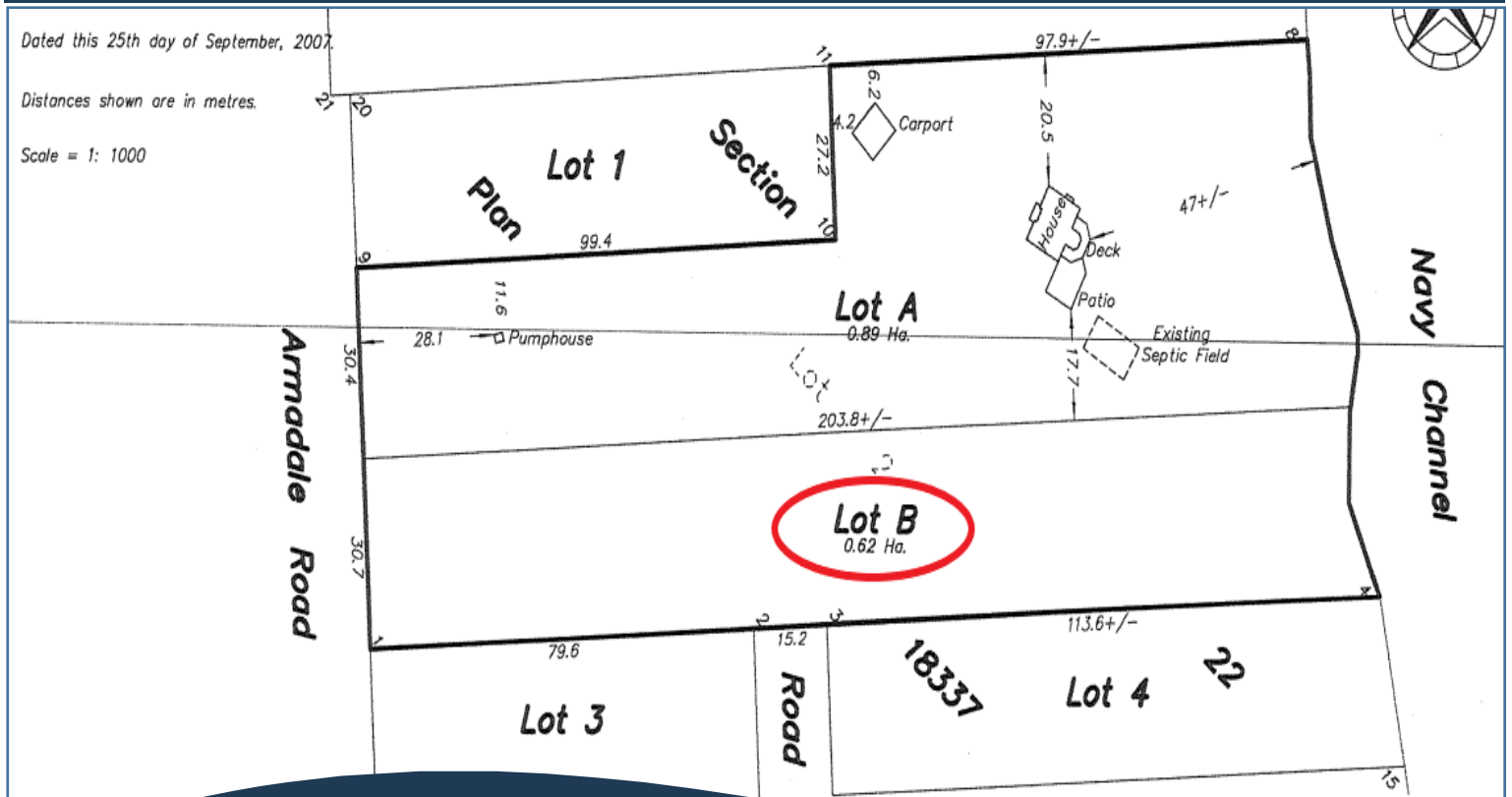
- Oceanfront
- Acreage
- Private Property
- Park-like setting
- No through road
- Quiet area
- Minutes to ferry, golf course, shopping, library and Community Hall

# Plot Plan and Aerial View

Dated this 25th day of September, 2007.

Distances shown are in metres.

Scale = 1: 1000



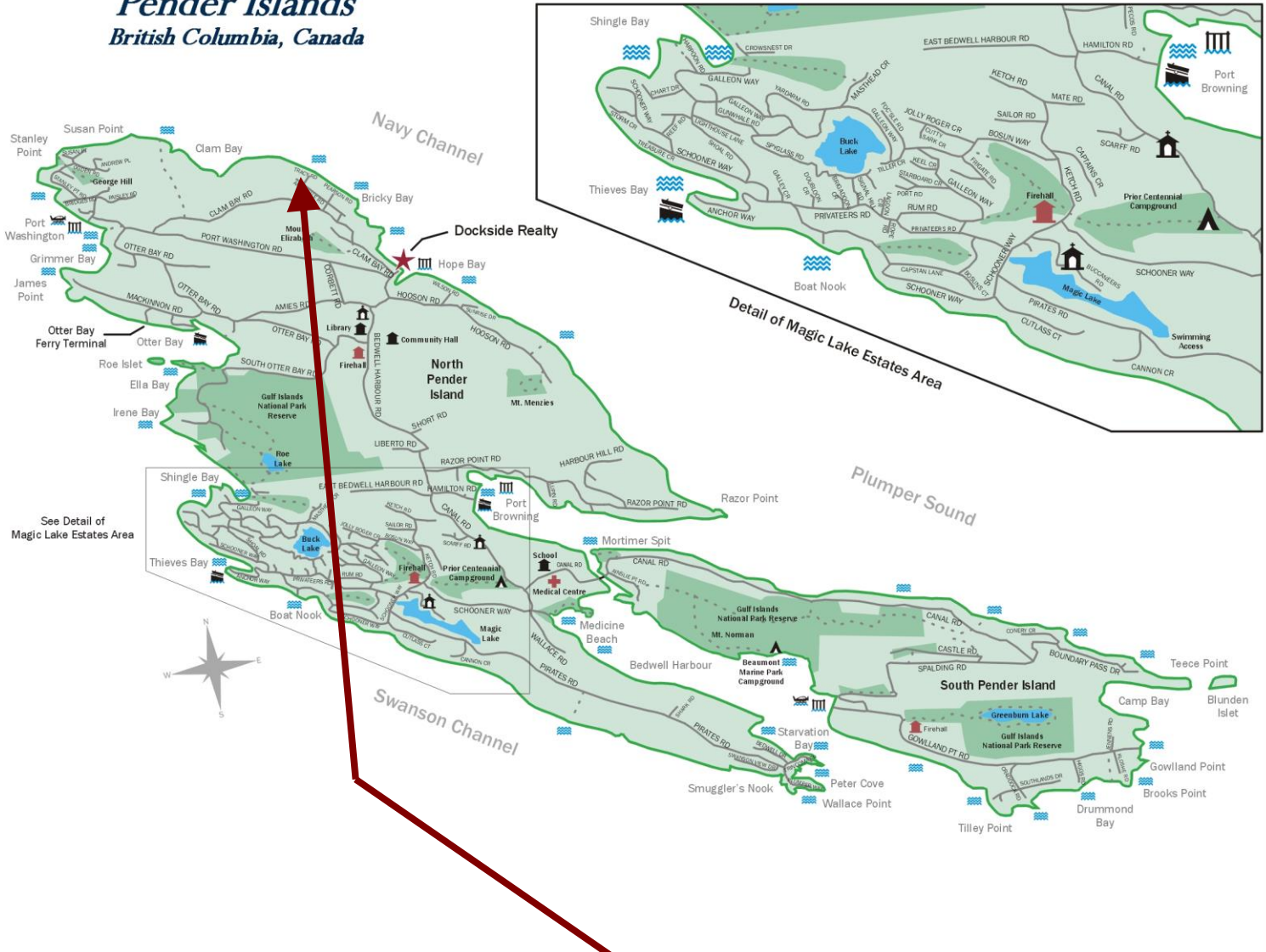
3218 Armadale Rd



MLS# 950914

# Pender Islands Map

## Pender Islands British Columbia, Canada



**Subject Property**  
**3218 Armadale Road**

- Dockside Realty
- Public Wharf
- Boat Launch
- Float Plane
- Firehall
- Medical Centre
- Municipal
- Place of Worship
- Campground
- Walking Trail
- Ocean Access/View

Map courtesy of Dockside Realty. Design Copyright © 2012 Minsky Designs www.minskydesigns.com. All rights reserved.

***DISCLAIMER:*** While every effort is made to provide reliable information, Dockside Realty Ltd. makes no representations or warranties as to the accuracy of this brochure.  
 All measurements are approximate and the buyer is responsible for verifying all data provided.



Pender Island • Saturna Island • Vancouver Island  
[www.DocksideRealty.ca](http://www.DocksideRealty.ca)  
[info@DocksideRealty.ca](mailto:info@DocksideRealty.ca) • 250-629-3383