

Private 10 Acre Homestead!



3405 S. Otter Bay Rd



Gulf Island Homestead on 10 Private Acres! Located at the top of an elevated & extremely sunny ridge, this country estate will capture your heart from the moment you arrive at the driveway & visit the gorgeous farm stand. Established orchard with a wide variety of trees including hazelnut, almond, nectarine, figs, plums, pears & apple. Giant fenced gardens. Abundant water supply from a drilled well & an irrigation well for farming. Delightful 4 BR, 2BA renovated 1925-sqft farmhouse with a 925-sqft finished basement. All renovations from 2010 onward & septic installed in 1996. New 20'x40' barn with loft, giant 28'x56' storage/workshop outbuilding, outdoor sauna, custom built roadside farm stand, plus several outbuildings & guest accommodations. Landscaped, level & ideal for livestock or equestrian pursuits. Low taxes due to Farm Exemption. Just 5 minutes from the Otter Bay ferry terminal & surrounded by large acreages. An extremely rare find in all of the Gulf Islands!



Dockside Realty
Gulf Islands • Vancouver Island

Pender Island • Saturna Island • Vancouver Island

www.DocksideRealty.ca

info@DocksideRealty.ca • 250-629-3383

Property Details



3405 S. Otter Bay Rd



Year Built (est):
1980

Lot Acres: 10.05

Bedrooms: 4

Bathrooms: 2

Fin SqFt: 1,925

Bsmt: 9' finished;
Full; Walk-out access
with windows

Water: Drilled Well

Waste: Septic
System

Outbuildings: Barn
with loft, Workshop,
Guest accommodation

Foundation:
Concrete Poured

Roof: Metal

Ext Fin: Wood

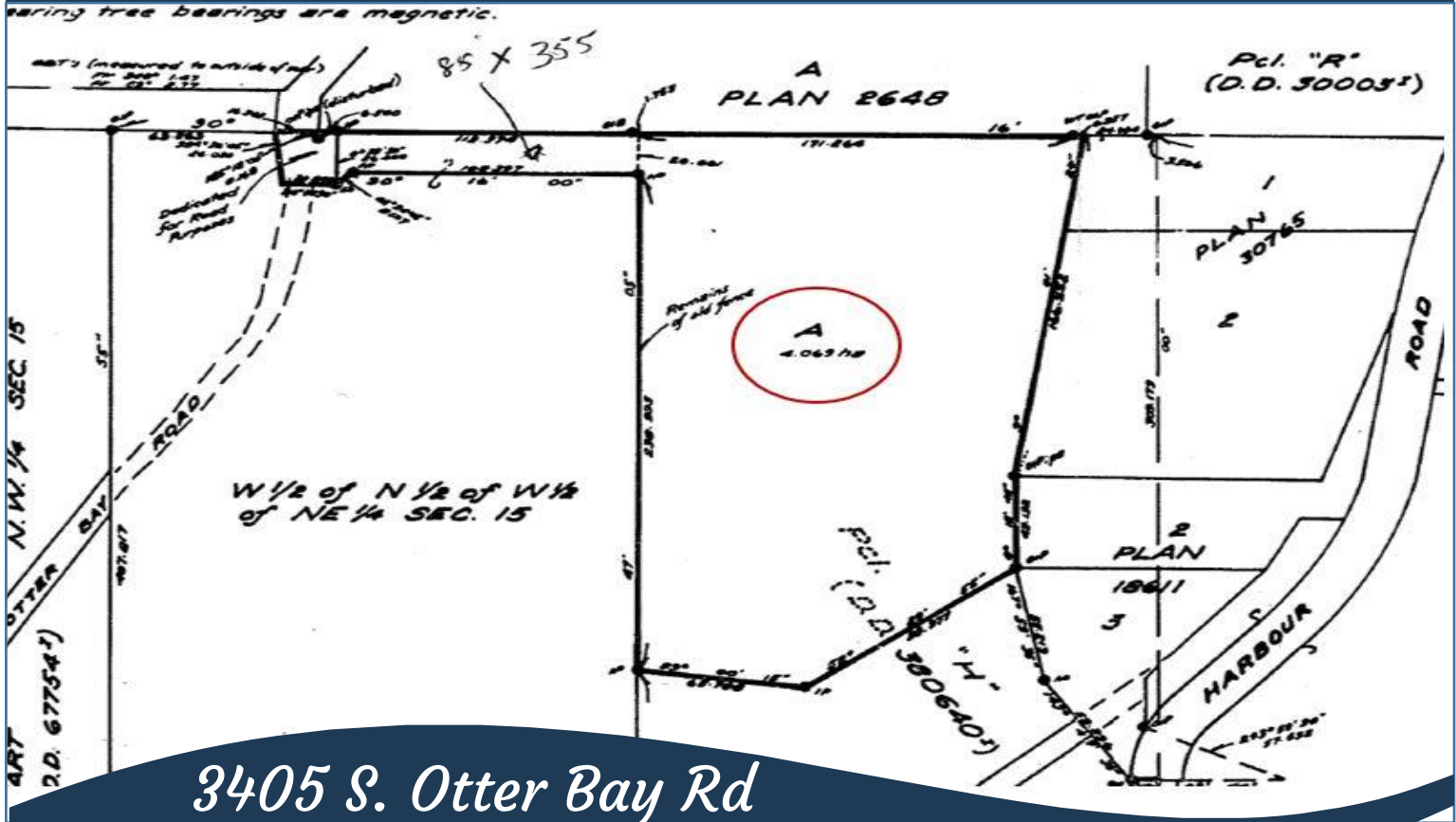
Heat: Wood Stove,
Baseboard electric

FP Location: Living
Room

Lot Features:

- Acreage
- Private & park-like
- Central location
- Sunny ridge
- Fenced garden and established orchard
- Close to shopping, ferry, golfing & marina

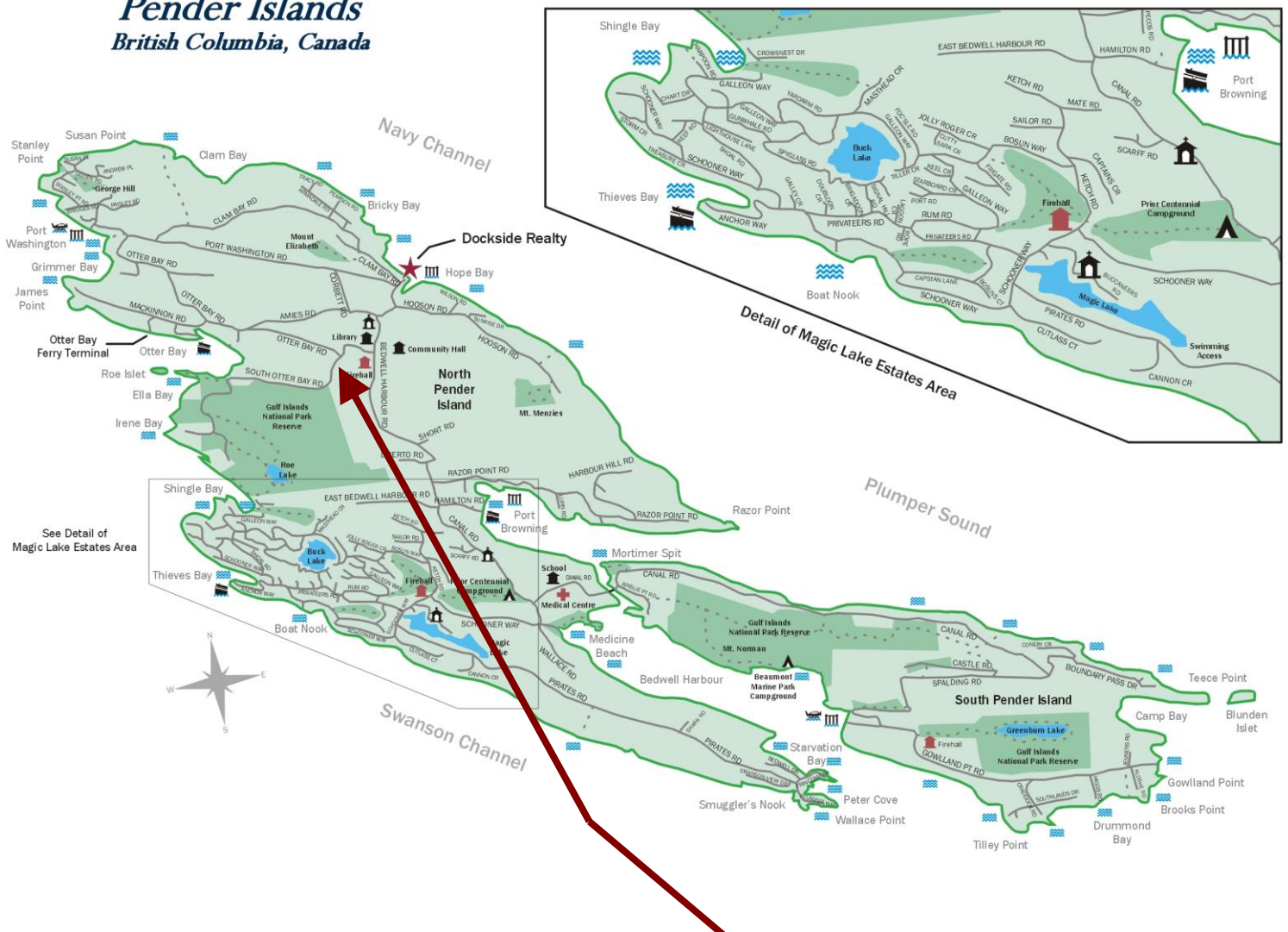
Plot Plan and Aerial View



Pender Island • Saturna Island • Vancouver Island
www.DocksdeRealty.ca
 info@DocksdeRealty.ca • 250-629-3383

Pender Islands Map

Pender Islands British Columbia, Canada



Subject Property
3405 S. Otter Bay Rd

- Dockside Realty
- Public Wharf
- Boat Launch
- Float Plane
- Firehall
- Medical Centre
- Municipal
- Place of Worship
- Campground
- Walking Trail
- Ocean Access/View

Map courtesy of Dockside Realty. Design Copyright © 2012 Minsky Designs www.minskydesigns.com. All rights reserved.

DISCLAIMER: While every effort is made to provide reliable information, Dockside Realty Ltd. makes no representations or warranties as to the accuracy of this brochure.

All measurements are approximate and the buyer is responsible for verifying all data provided.

Pender Island • Saturna Island • Vancouver Island

www.DocksideRealty.ca

info@DocksideRealty.ca • 250-629-3383

