

The Sweet Spot in Magic Lake!



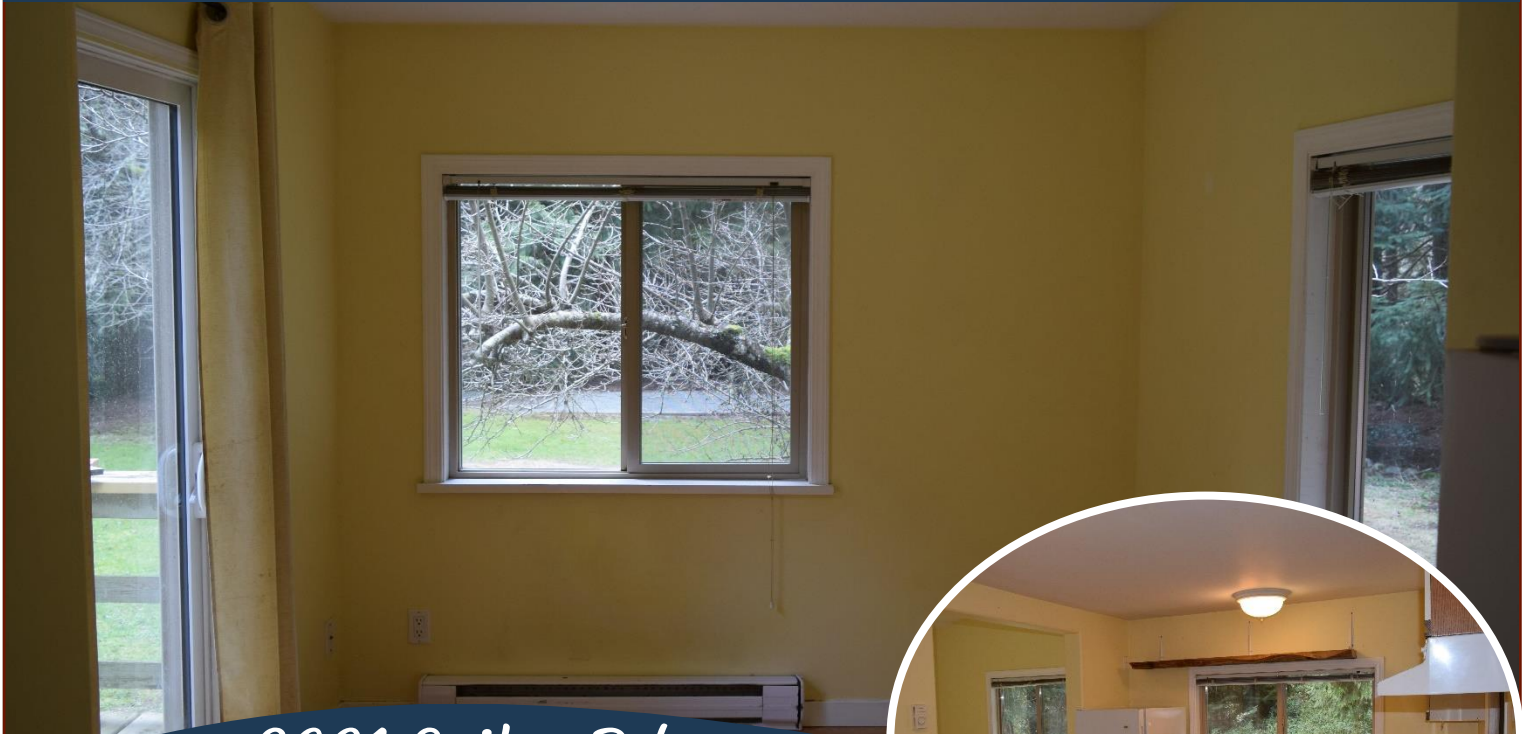
3601 Sailor Rd



The Sweet Spot! Located at the end of a very quiet, no-through road and bordered on 2 sides by protected Park lands, this sweet spot is the perfect option for weekend retreat or full time relaxing! Easy care property is mostly level & includes mature fruit trees. Backyard enjoys sunny, southern exposure and offers great potential for food and flower gardens. Currently the most affordable dwelling on the Penders, the functional tiny style home features 1 bedroom, three piece bathroom, full kitchen, cozy living area and hookups for a stacking washer/dryer. Vacant property right next door is available to purchase separately with first refusal offered to the new owner of The Sweet Spot!! Desirable location is near Walking Trails, Disc Golf & Scenic Viewpoints on Lively Peak. Property owners in this area may qualify for affordable moorage at Thieves Bay Community Marina. Property is serviced by Municipal water system.



Property Details



3601 Sailor Rd



Lot Acres: 0.48

Bedrooms: 1

Bathrooms: 1

Fin SqFt: 360

Unfin SqFt: 0

Bsmt: None

Water: Municipal

Waste: Septic system

Water: Municipal

Foundation:

Pillar/Post/Pier/other

Heat: Baseboard,
Electric

Lot Features:

- Sunny south facing
- Level
- Park setting
- Magic Lake Estates with access to Thieves Bay marina & tennis courts

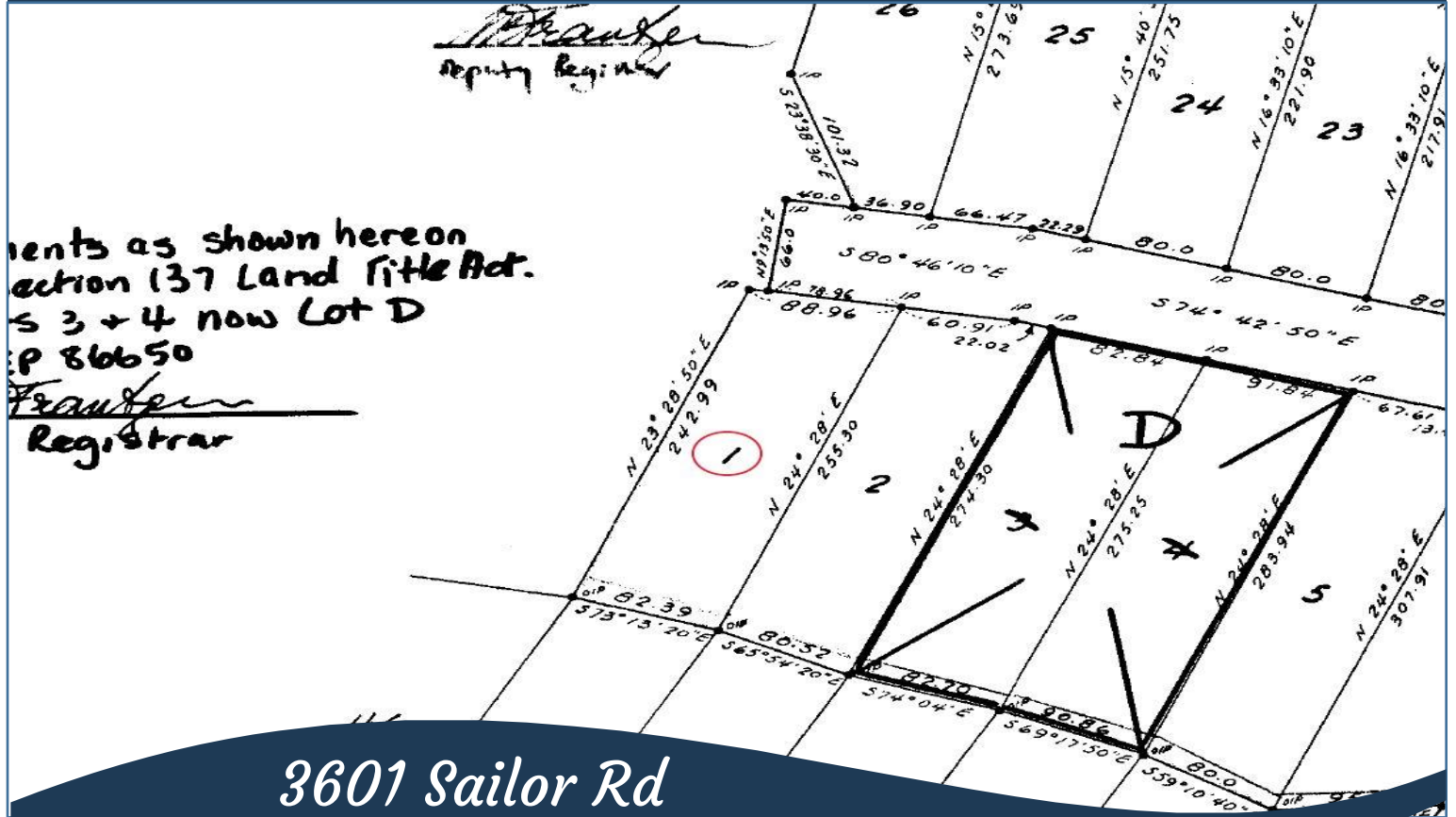


Pender Island • Saturna Island • Vancouver Island

www.DocksdeRealty.ca

info@DocksdeRealty.ca • 250-629-3383

Plot Plan and Aerial View



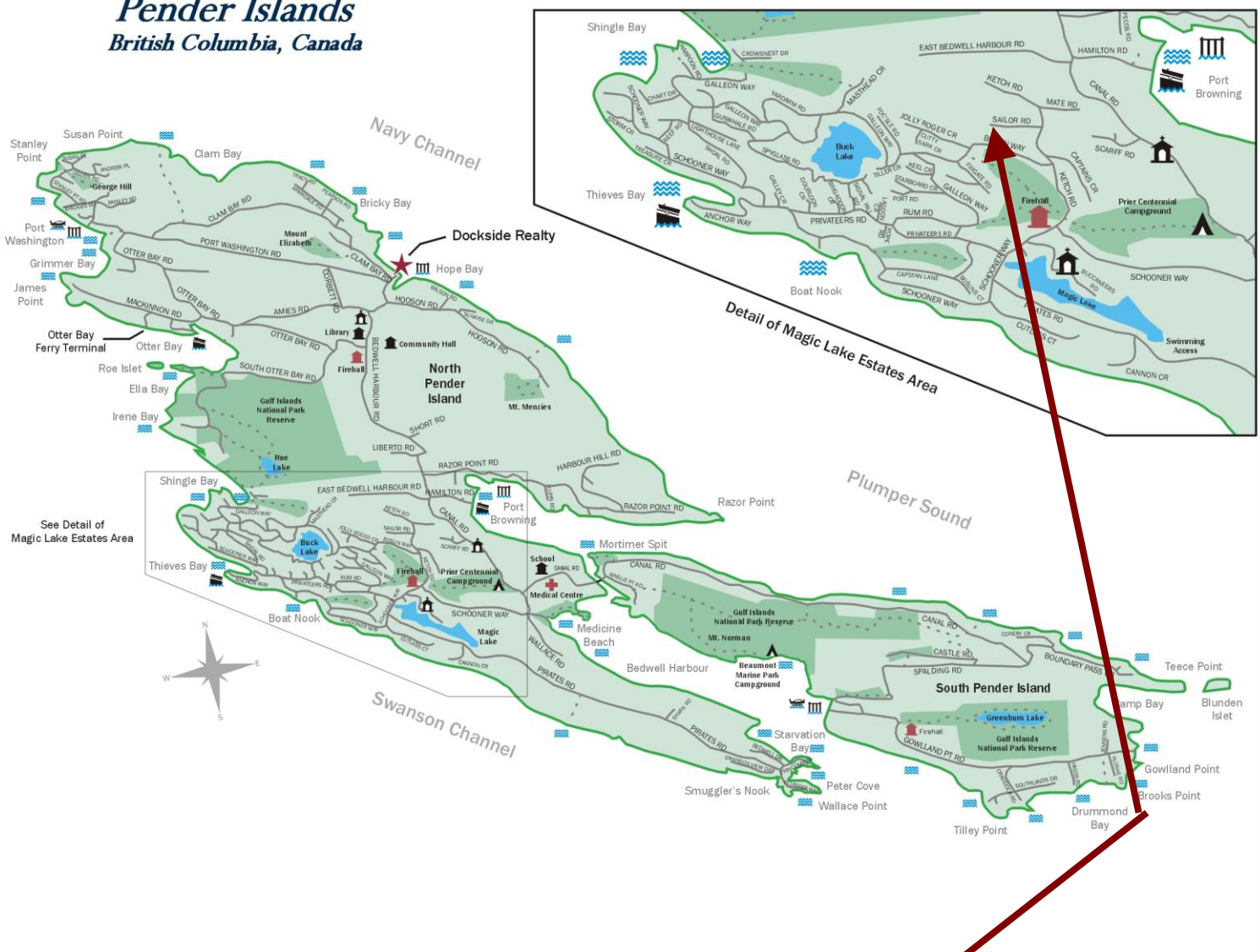
3601 Sailor Rd



Pender Island • Saturna Island • Vancouver Island
www.DocksdeRealty.ca
info@DocksdeRealty.ca • 250-629-3383

Pender Islands Map

Pender Islands British Columbia, Canada



**Subject Property
3601 Sailor Rd**

- Docksde Realty
- Public Wharf
- Boat Launch
- Float Plane
- Firehall
- Medical Centre
- Municipal
- Place of Worship
- Campground
- Walking Trail
- Ocean Access/View

Map courtesy of Docksde Realty. Design Copyright © 2012 Minsky Designs www.minskydesigns.com. All rights reserved.

DISCLAIMER: While every effort is made to provide reliable information, Docksde Realty Ltd. makes no representations or warranties as to the accuracy of this brochure.

All measurements are approximate and the buyer is responsible for verifying all data provided.



Pender Island • Saturna Island • Vancouver Island
www.DocksdeRealty.ca
info@DocksdeRealty.ca • 250-629-3383