

# Immaculate Pender Rancher!



3620 Jolly Roger Cres



**Immaculate Pender Island Dream Rancher!** This unique & custom designed Lynwood Cedar Home is situated on a sunny, extremely private lot, tucked behind a natural berm at the road & framed on both property lines with tall, beautifully crafted solid cedar fencing. Featuring a paved driveway, approximately 1500-sqft of level entry, open-plan living, 2BR, 2BA, vaulted cedar ceilings, hardwood flooring, pine kitchen with breakfast bar, SS appliances, commercial grade propane oven, plus a giant wrap-around cedar deck with hard wired propane connection for your BBQ. Attached double garage/workshop, plus an additional attached single garage make for a hobbyist's haven. Don't forget about the additional finished home office space at the back of the double garage. A custom-built Gazebo & several outbuildings for storage complete this delightful package. No stone is out of place & no detail has been overlooked in this meticulously cared for home & property. Move right in & enjoy the island life!



**Dockside Realty**  
Gulf Islands • Vancouver Island

Pender Island • Saturna Island • Vancouver Island

[www.DocksideRealty.ca](http://www.DocksideRealty.ca)

[info@DocksideRealty.ca](mailto:info@DocksideRealty.ca) • 250-629-3383

# Property Details



3620 Jolly Roger Cres



**Year Built (est):**  
1993

**Lot Acres:** 0.46

**Bedrooms:** 2

**Bathrooms:** 2

**Fin SqFt:** 1,500

**Unfin SqFt:** 750

**Bsmt:** Crawl space

**Height:** 3 ft 6 in

**Water:** Municipal

**Waste:** Septic system

**Driveway:** Paved

**Foundation:**  
Concrete Poured

**Roof:** Asphalt shingle, Metal

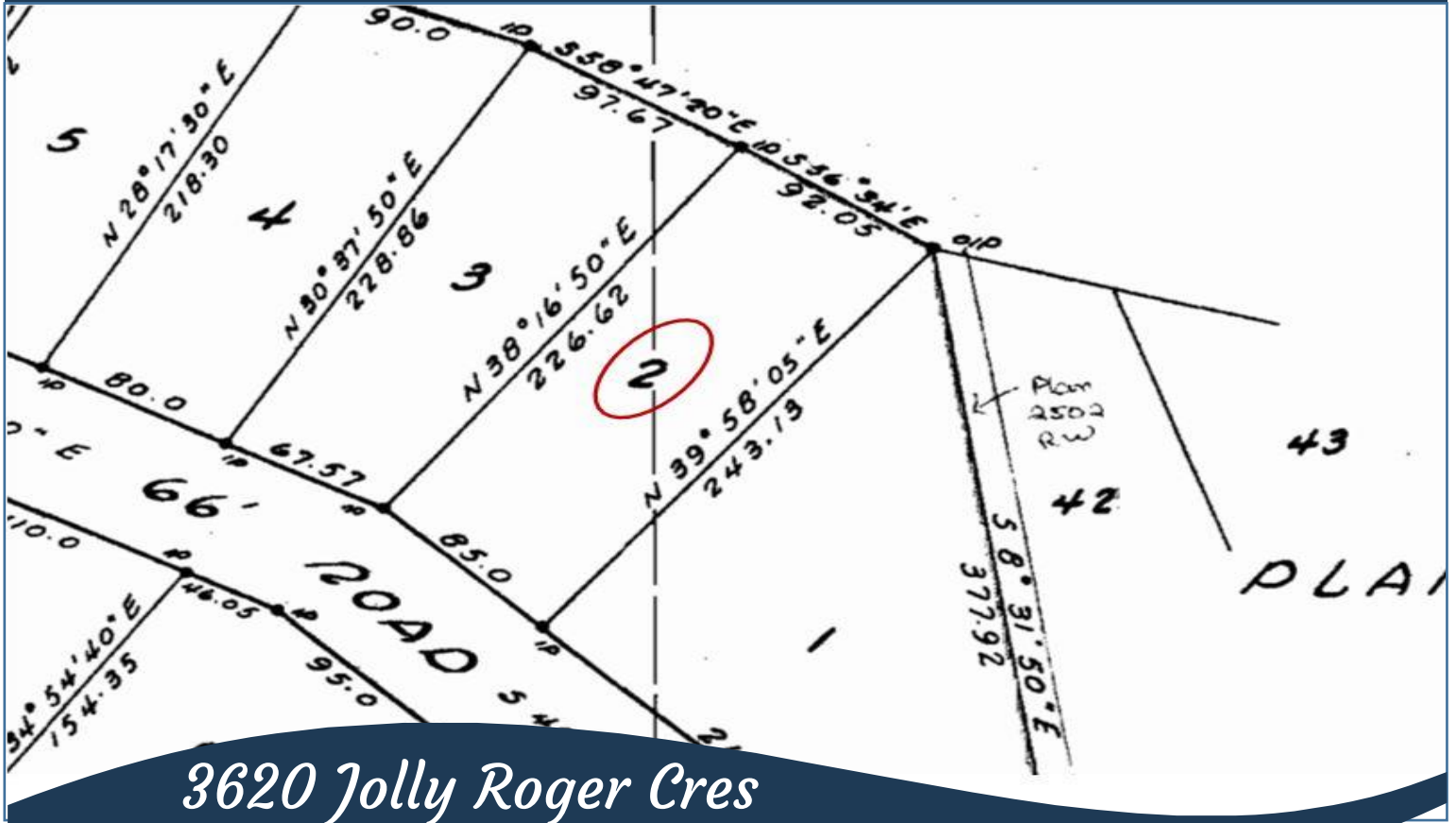
**Ext Fin:** Wood

**Heat:** Baseboard, Electric, Propane

**Lot Features:**

- Private
- Sunny, south facing
- Quiet area
- Gazebo & garage
- Magic Lake Estates with access to Thieves Bay marina & tennis courts

# Plot Plan and Aerial View

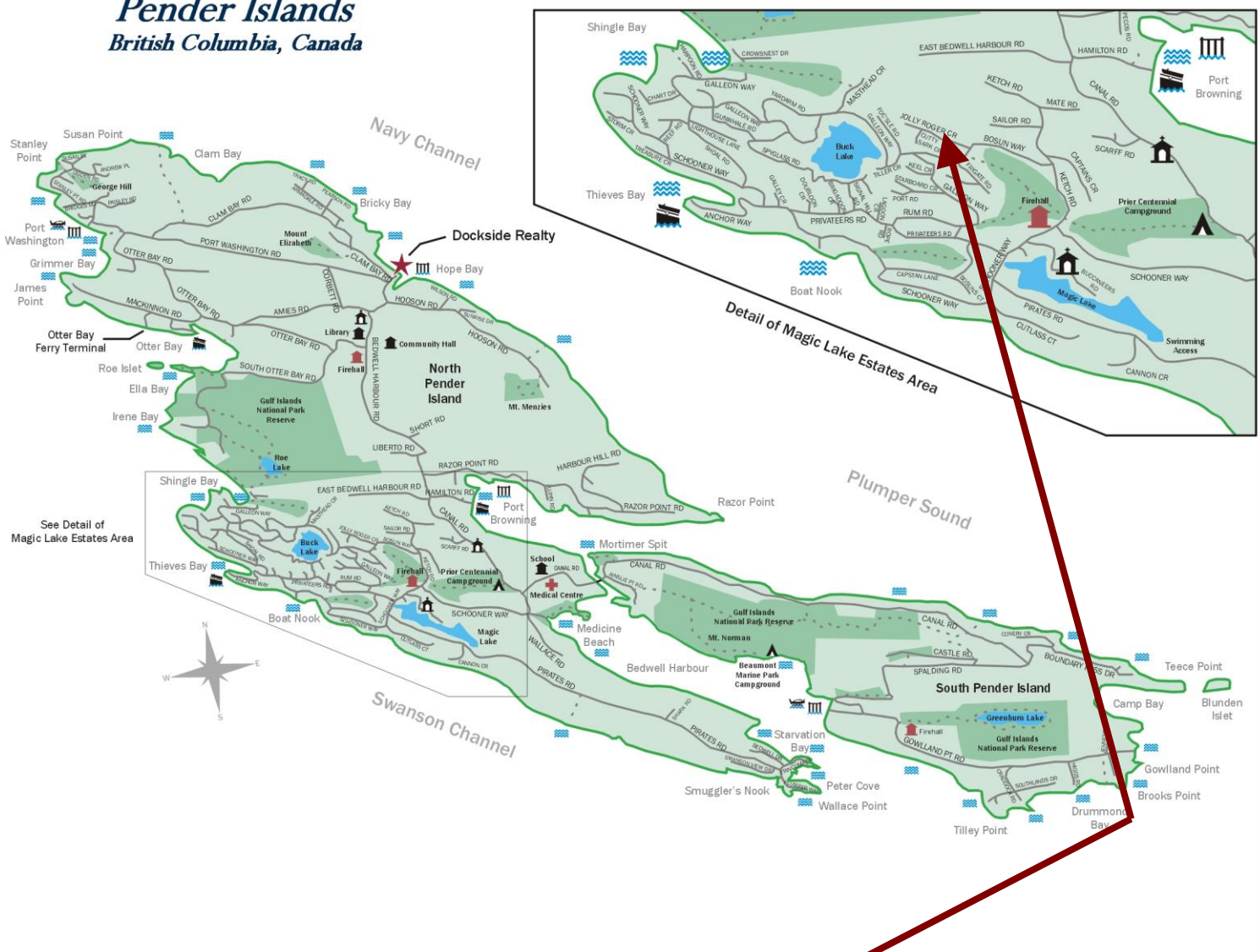


3620 Jolly Roger Cres



# Pender Islands Map

## Pender Islands British Columbia, Canada



**Subject Property  
3620 Jolly Roger Cres**

- Dockside Realty
- Public Wharf
- Boat Launch
- Float Plane
- Firehall
- Medical Centre
- Municipal
- Place of Worship
- Campground
- Walking Trail
- Ocean Access/View

Map courtesy of Dockside Realty. Design Copyright © 2012 Minsky Designs www.minskydesigns.com. All rights reserved.

**DISCLAIMER:** While every effort is made to provide reliable information, Dockside Realty Ltd. makes no representations or warranties as to the accuracy of this brochure.

All measurements are approximate and the buyer is responsible for verifying all data provided.



Pender Island • Saturna Island • Vancouver Island

www.DocksdeRealty.ca

info@DocksdeRealty.ca • 250-629-3383