

Build Your Dream Home!



3624 Foc'sle Rd

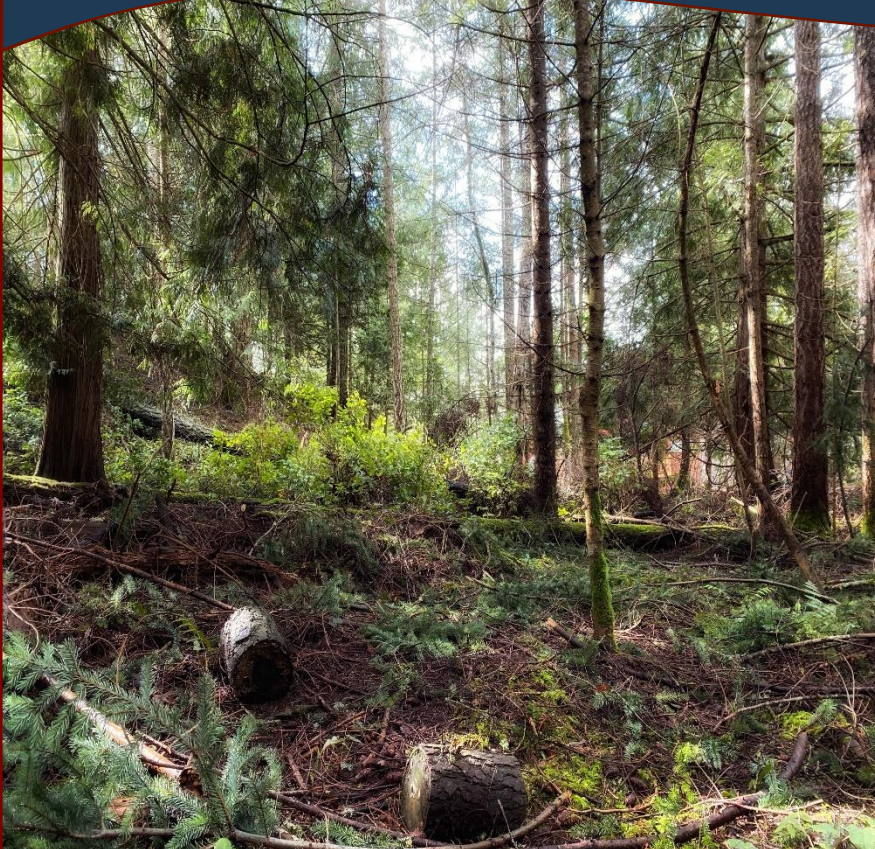


Make your dream come true on Pender Island! This Magic Lake Estate lot has municipal water, sewer and services at the lot line, ready to build your dream home or getaway cottage. Trees on the lot offer privacy and natural forest landscape. Magic Lake owners have access to low moorage rates at Thieves Bay Marina and 2 tennis courts. Enjoy the many walking trails, ocean beaches, Magic Lake swimming and disc golf course - all minutes from your door. This opportunity will not last long. Accepting offers for review until March 24th at 1pm. Please leave offers open until March 25th at 1 pm.

Property Details



3624 Foc'sle Rd



Lot Acres: 0.50

Water: Municipal

Waste: Sewer to lot

Services: At lot line

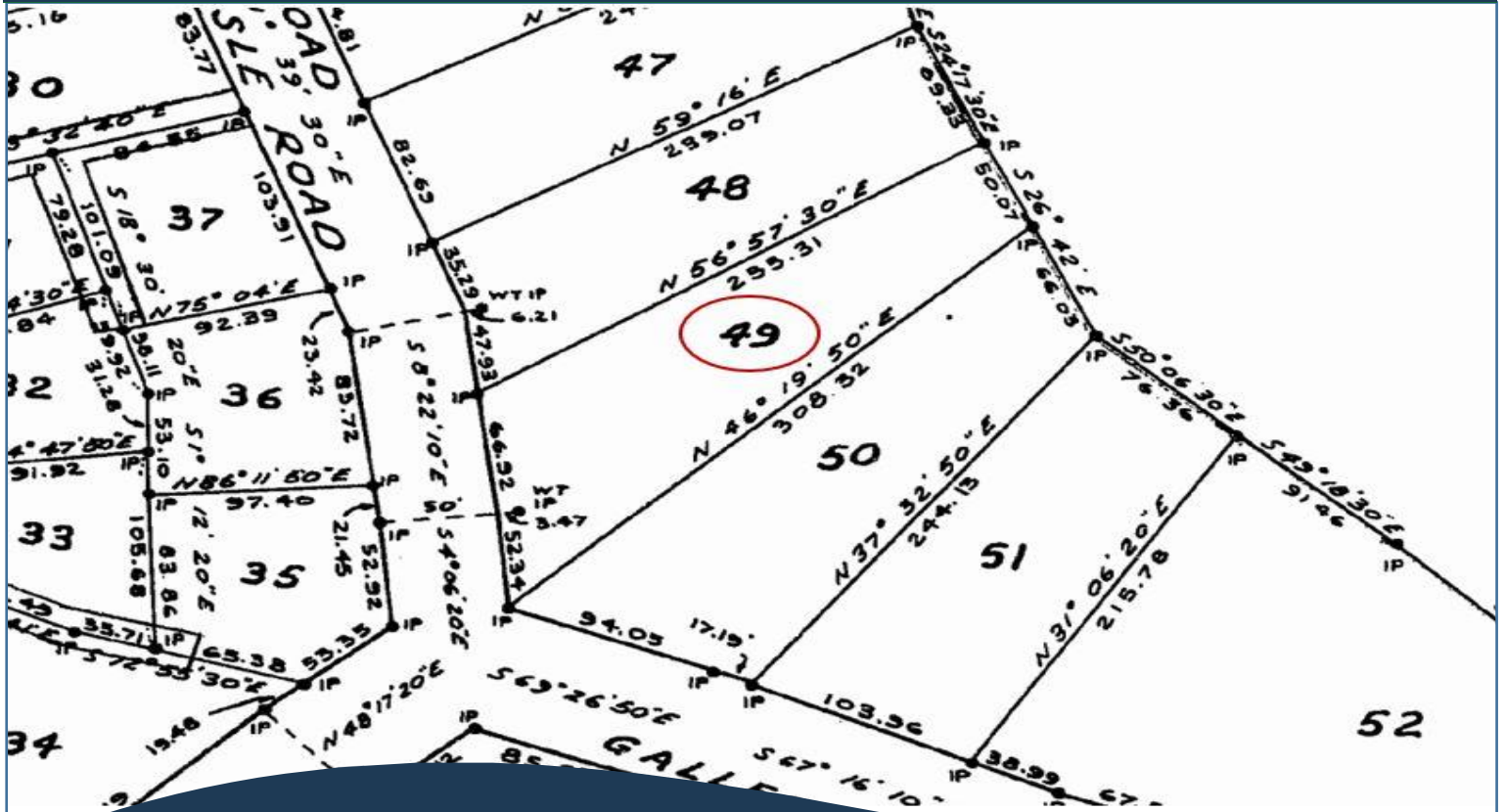
Driveway: None

Bldg Scheme: No

Lot Features:

- Level
- Treed
- Central location
- Easy Access
- Magic Lake Estates with access to Thieves Bay Marina & tennis courts.

Plot Plan and Aerial View



3624 Foc'sle Road

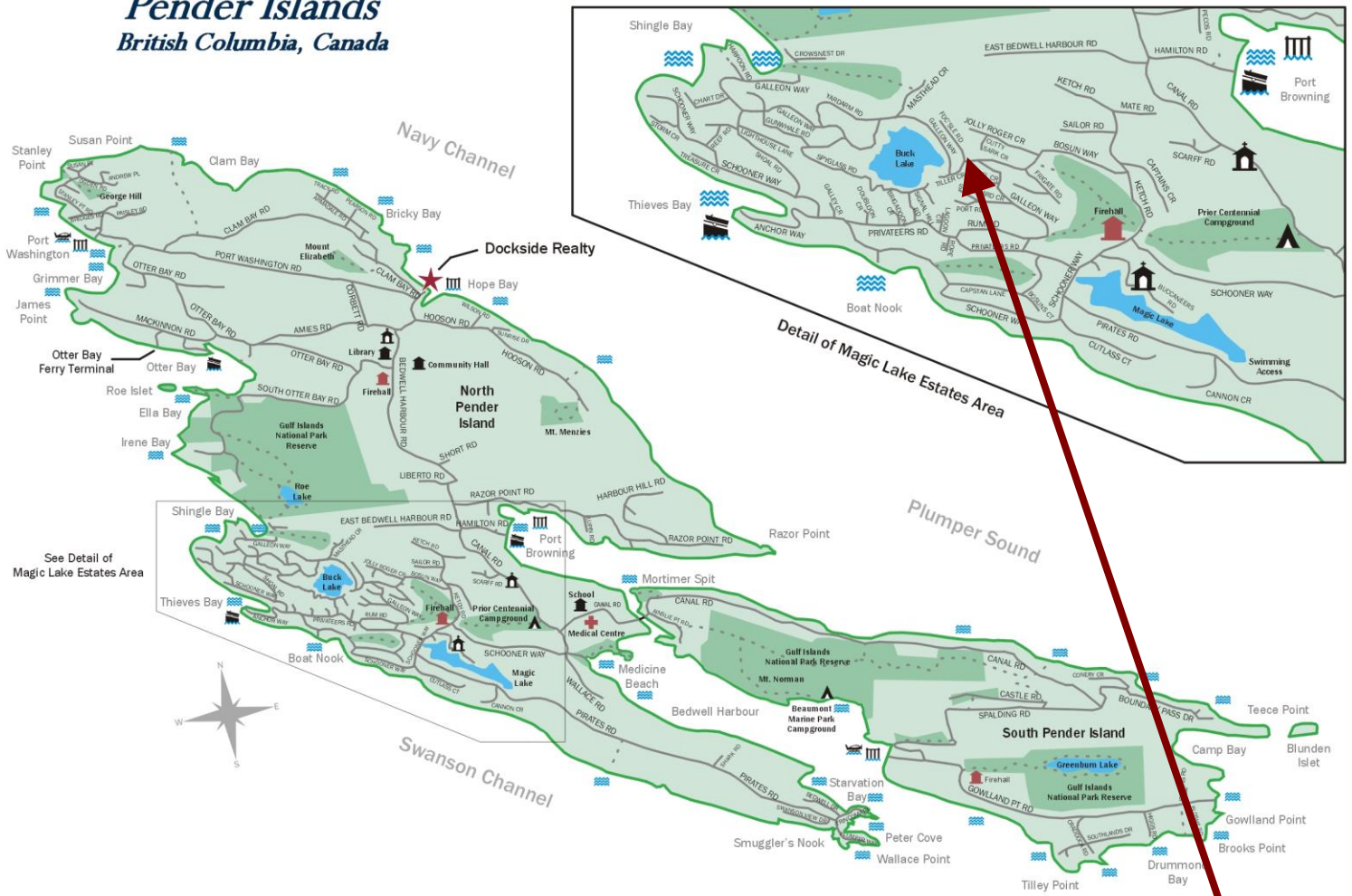


Hope Bay: 250-629-3166
Sidney: 250-656-5062
info@DocksiderRealty.ca

Driftwood: 250-629-3383
Saturna: 250-539-2121
www.DocksiderRealty.ca

Pender Islands Map

Pender Islands British Columbia, Canada



**Subject Property
3624 Foc'sle Road**

- Dockside Realty
- Public Wharf
- Boat Launch
- Float Plane
- Firehall
- Medical Centre
- Municipal
- Place of Worship
- Campground
- Walking Trail
- Ocean Access/View

Map courtesy of Dockside Realty. Design Copyright © 2012 Minsky Designs www.minskydesigns.com. All rights reserved.

DISCLAIMER: While every effort is made to provide reliable information, Dockside Realty Ltd. makes no representations or warranties as to the accuracy of this brochure.
All measurements are approximate and the buyer is responsible for verifying all data provided.



Hope Bay: 250-629-3166
Sidney: 250-656-5062
info@DocksideRealty.ca

Driftwood: 250-629-3383
Saturna: 250-539-2121
www.DocksideRealty.ca