

SW Facing Oceanfront Paradise!



37161 Schooner Way



Southwest Facing Oceanfront Paradise! Perched on the ocean's edge of this private, fully fenced property, overlooking a sheltered cove, this custom designed Westcoast style 1700 sq ft, 2BR+Den, 2BA home has been tastefully updated throughout with meticulous attention to detail in every aspect. From the moment you arrive at the beautifully crafted cedar front gate, you will discover that this entire property, from the exterior landscaping to the interior finishing, is truly a work of art. If you think the photos are beautiful, just wait until you see this with your own eyes! A detached 180 sq ft accessory building is perfect for guests & features an open plan studio space with fireplace, two-piece BA, plus a covered carport. Ocean access properties are hard to find & sunsets in this location are spectacular. A full supplement package, including a detailed list of upgrades & negotiable inclusions is available upon request. The pinnacle of perfection!



Dockside Realty
Gulf Islands • Vancouver Island

Pender Island • Saturna Island • Vancouver Island

www.DocksideRealty.ca

info@DocksideRealty.ca • 250-629-3383

Property Details



37161 Schooner Way



Year Built (est):
1999

Lot Acres: 0.86

Bedrooms: 3

Bathrooms: 3

Fin SqFt: 1,680

Unfin SqFt: 565

Bsmnt: 6' crawl space

Water: Municipall

Waste: Sewer

Driveway: Gravel

Foundation:
Concrete Poured

Roof: Fibreglass shingle

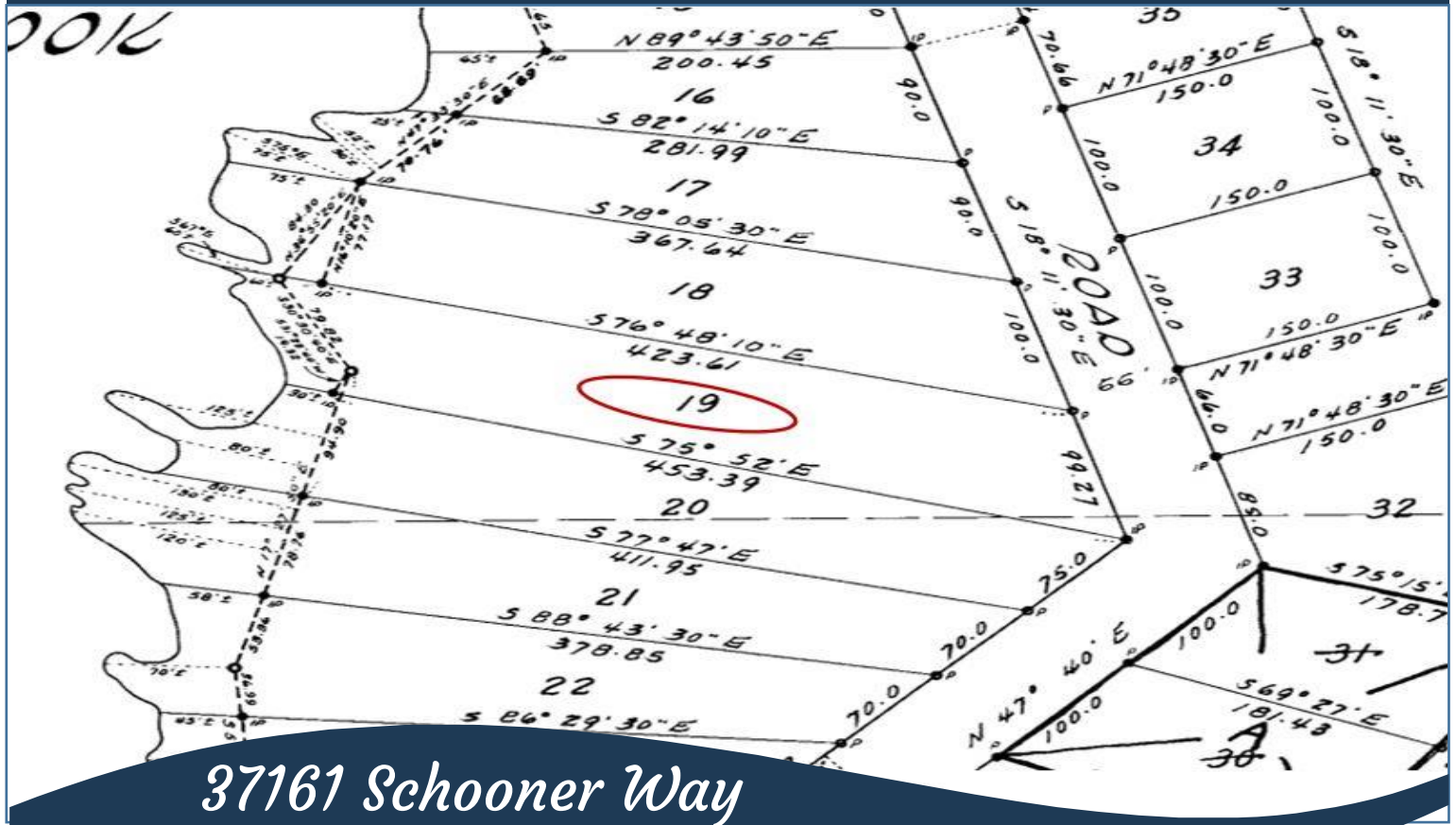
Ext Fin: Wood

Heat: Baseboard, Electric, Wood

Lot Features:

- Oceanfront
- Sunny SW facing
- Expansive views
- Separate studio
- Magic Lake Estates with access to Thieves Bay marina & tennis courts

Plot Plan and Aerial View

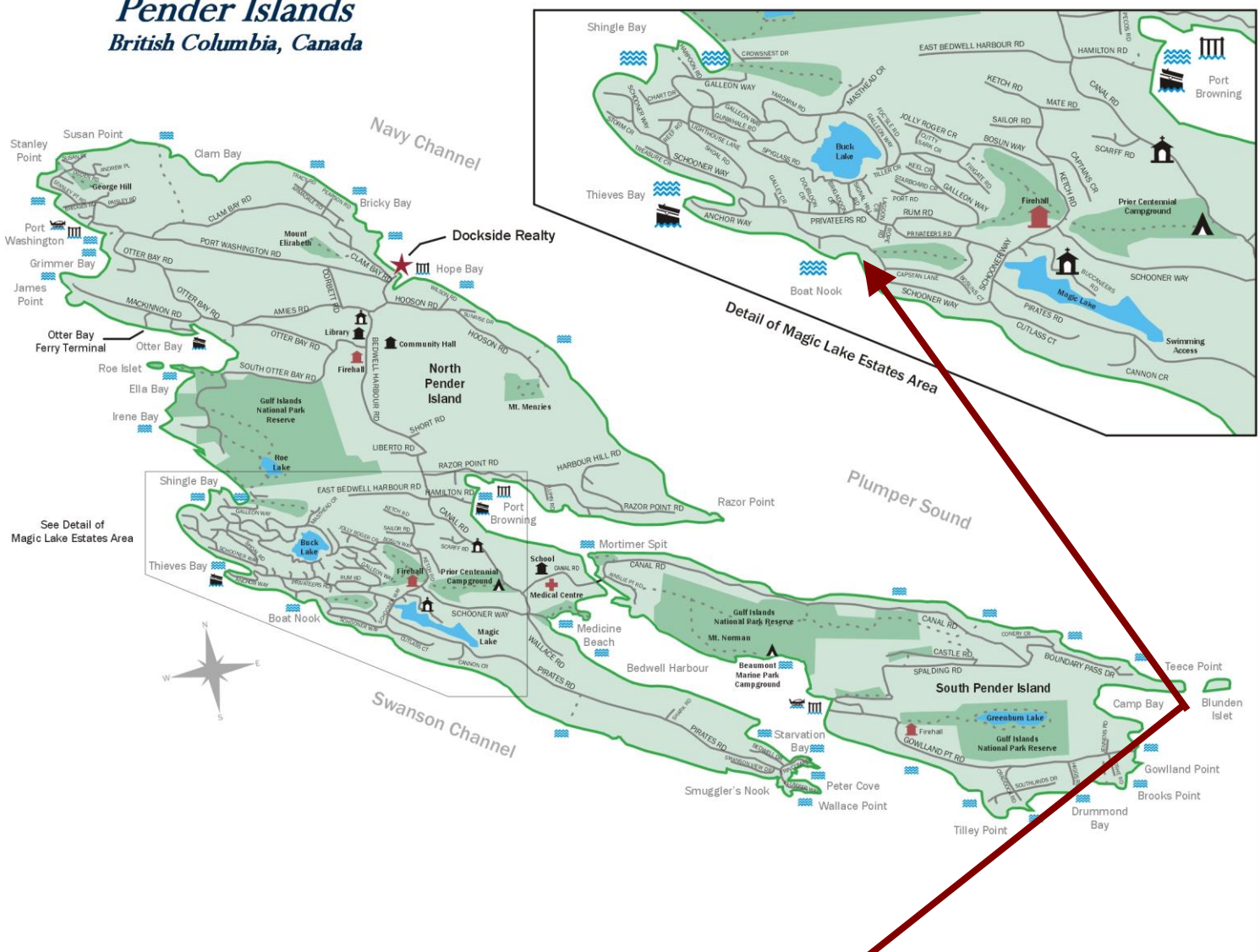


37161 Schooner Way



Pender Islands Map

Pender Islands British Columbia, Canada



**Subject Property
37161 Schooner Way**

- Dockside Realty
- Public Wharf
- Boat Launch
- Float Plane
- Firehall
- Medical Centre
- Municipal
- Place of Worship
- Campground
- Walking Trail
- Ocean Access/View

Map courtesy of Dockside Realty. Design Copyright © 2012 Minsky Designs www.minskydesigns.com. All rights reserved.

DISCLAIMER: While every effort is made to provide reliable information, Dockside Realty Ltd. makes no representations or warranties as to the accuracy of this brochure.

All measurements are approximate and the buyer is responsible for verifying all data provided.



Pender Island • Saturna Island • Vancouver Island
www.DocksideRealty.ca
info@DocksideRealty.ca • 250-629-3383