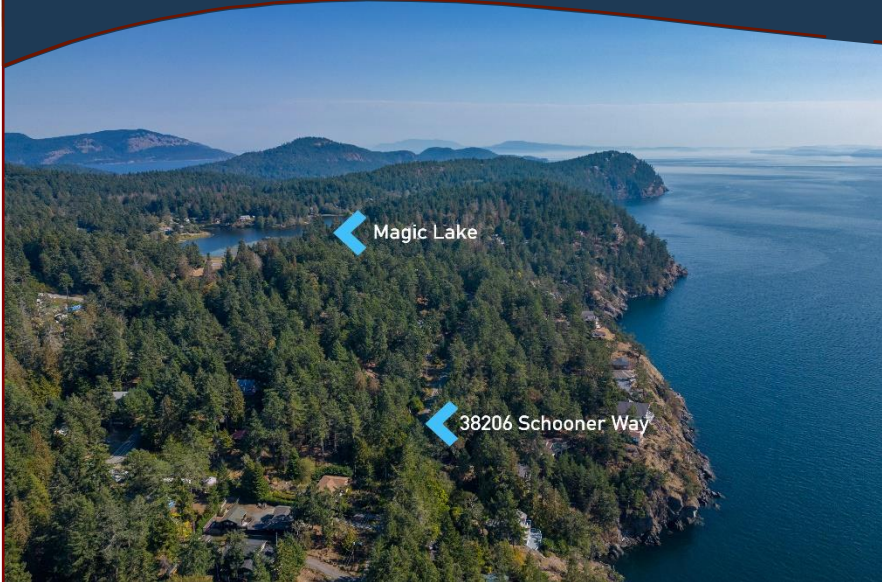


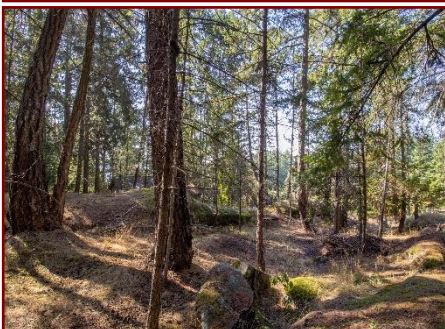
# Idyllic South-Facing Cottage!



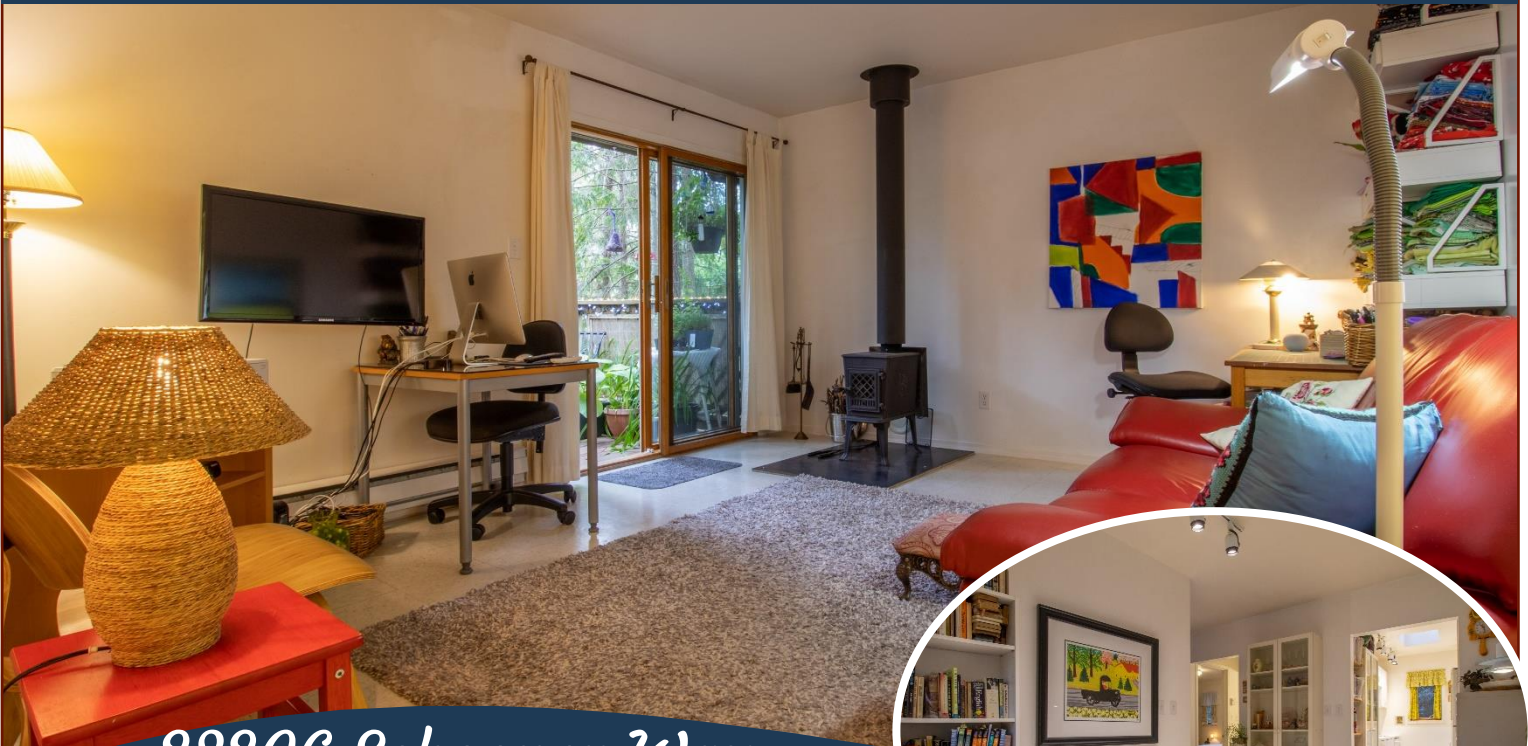
38206 Schooner Way



***Idyllic South Facing Cottage with Ocean Glimpses!*** Lovingly built & maintained by the current owners, this 1BR, 1BA, approximately 600-sqft island cottage is set well back from the road & nestled amongst the trees. The property extends at the back to a beautiful rock ridge, creating a natural privacy barrier & park like setting in your own backyard. The Southern exposure offers year-round sun filtered through the trees. In the fall & winter months, the ocean glimpses across the road are even more prominent. Interior features four skylights, a efficient Jotul woodstove, plus a heat pump installed in Feb 2023. Outside is partially fenced & includes a tidy accessory building for storage, a second tool shed, plus three fruit trees (quince, golden plum, dolgo crabapple). This is a very peaceful setting in an excellent location, close to Thieves Bay Marina and several other choice ocean access points. A lovely place to call "home"!



# Property Details



38206 Schooner Way



**Year Built (est):**  
1994

**Lot Acres:** 0.35

**Bedrooms:** 1

**Bathrooms:** 1

**Fin SqFt:** 600

**Unfin SqFt:** 150

**Bsmnt:** 4' crawl space

**Water:** Municipal

**Waste:** Sewer

**Driveway:** Dirt

**Foundation:**

Concrete Poured,  
Post-Pillar-Pad

**Roof:** Asphalt  
shingle

**Ext Fin:** Wood

**Heat:** Baseboard,  
Heat Pump, Wood

**Cooling:** Heat Pump

**Lot Features:**

- Ocean glimpses
- South facing
- Natural setting
- Magic Lake Estates  
with access to  
Thieves Bay marina &  
tennis courts

# Plot Plan and Aerial View

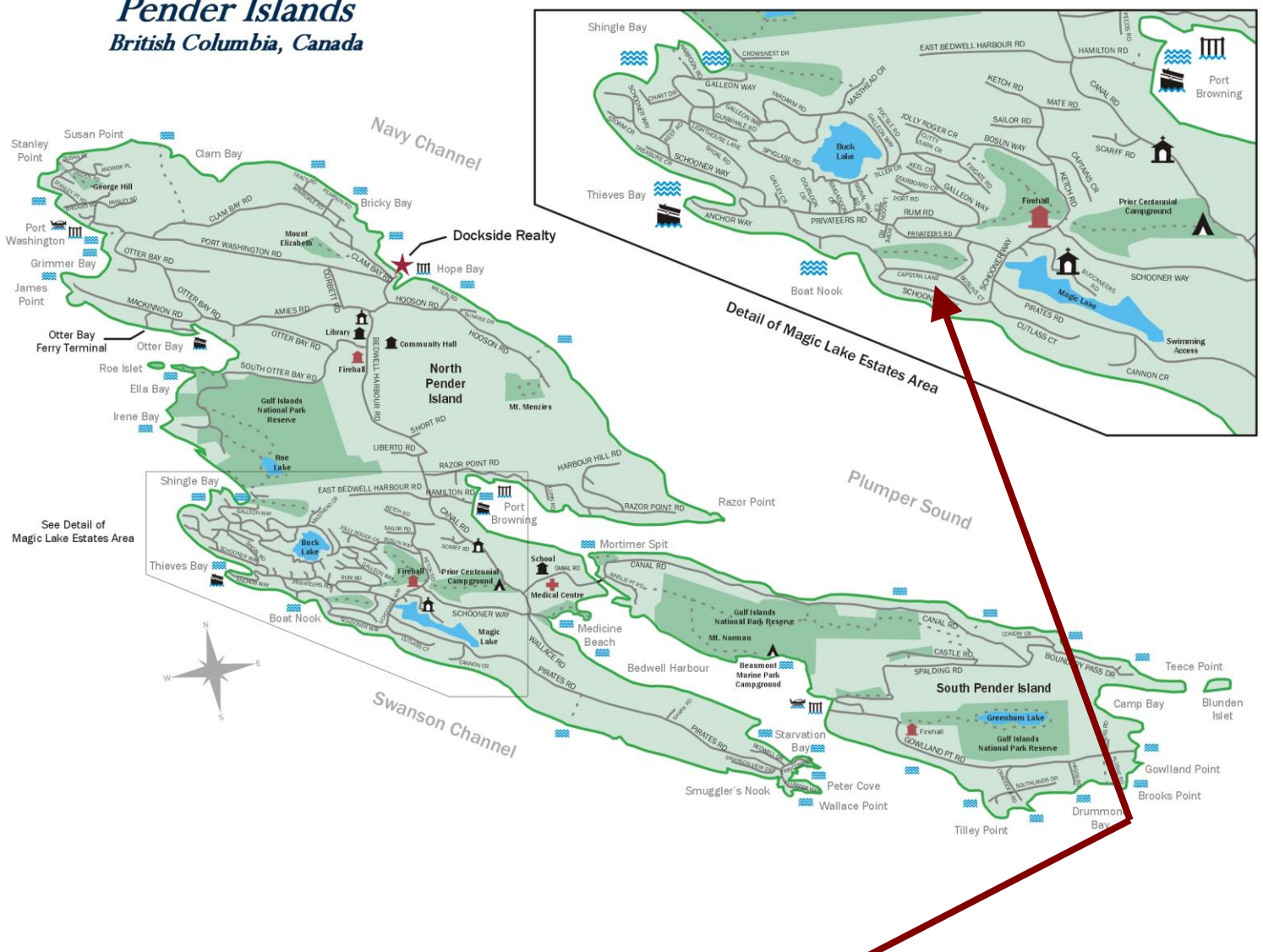


38206 Schooner Way



# Pender Islands Map

## Pender Islands British Columbia, Canada



**Subject Property  
38206 Schooner Way**

- Dockside Realty
- Public Wharf
- Boat Launch
- Float Plane
- Firehall
- Medical Centre
- Municipal
- Place of Worship
- Campground
- Walking Trail
- Ocean Access/View

Map courtesy of Dockside Realty. Design Copyright © 2012 Minsky Designs www.minskydesigns.com. All rights reserved.

**DISCLAIMER:** While every effort is made to provide reliable information, Dockside Realty Ltd. makes no representations or warranties as to the accuracy of this brochure.

All measurements are approximate and the buyer is responsible for verifying all data provided.



Pender Island • Saturna Island • Vancouver Island

www.DocksideRealty.ca

info@DocksideRealty.ca • 250-629-3383