

36 Acres of Pristine Forest!



4201 Clam Bay Road



36 acres of pristine forest on enchanting Pender Island: a true gem. Accessible via multiple driveways, this sanctuary offers endless opportunities for exploration, each path unveiling the potential for your dream home. With views of Navy Channel and Plumper Sound, finding the perfect building site is an adventure in itself. But the magic doesn't end there—venture up to Mount Elizabeth's ridge for panoramic sweeping views of Pender Island and beyond. Immerse yourself in the natural beauty, with nearby treasures like Hope Bay & Bricky Bay. Just a short drive away, find modern amenities at Southridge Grocery and Home Hardware, maintaining convenience without compromising the tranquility of your forest retreat. Grab your hiking boots and agent, and journey through this diverse paradise. Respect private property and contact the listing agent before exploration. As you ascend, remember that all land to the right is private until reaching the grand fir tree with the pink ribbon.



Dockside Realty
Gulf Islands Vancouver Island

Pender Island • Saturna Island • Vancouver Island

www.DocksideRealty.ca

info@DocksideRealty.ca • 250-629-3383

Property Details



4201 Clam Bay Rd



Lot Acres: 36

Water: drilled well

Potability Test:
Yes

Well Log: Yes

Waste: None

Perc Test: No

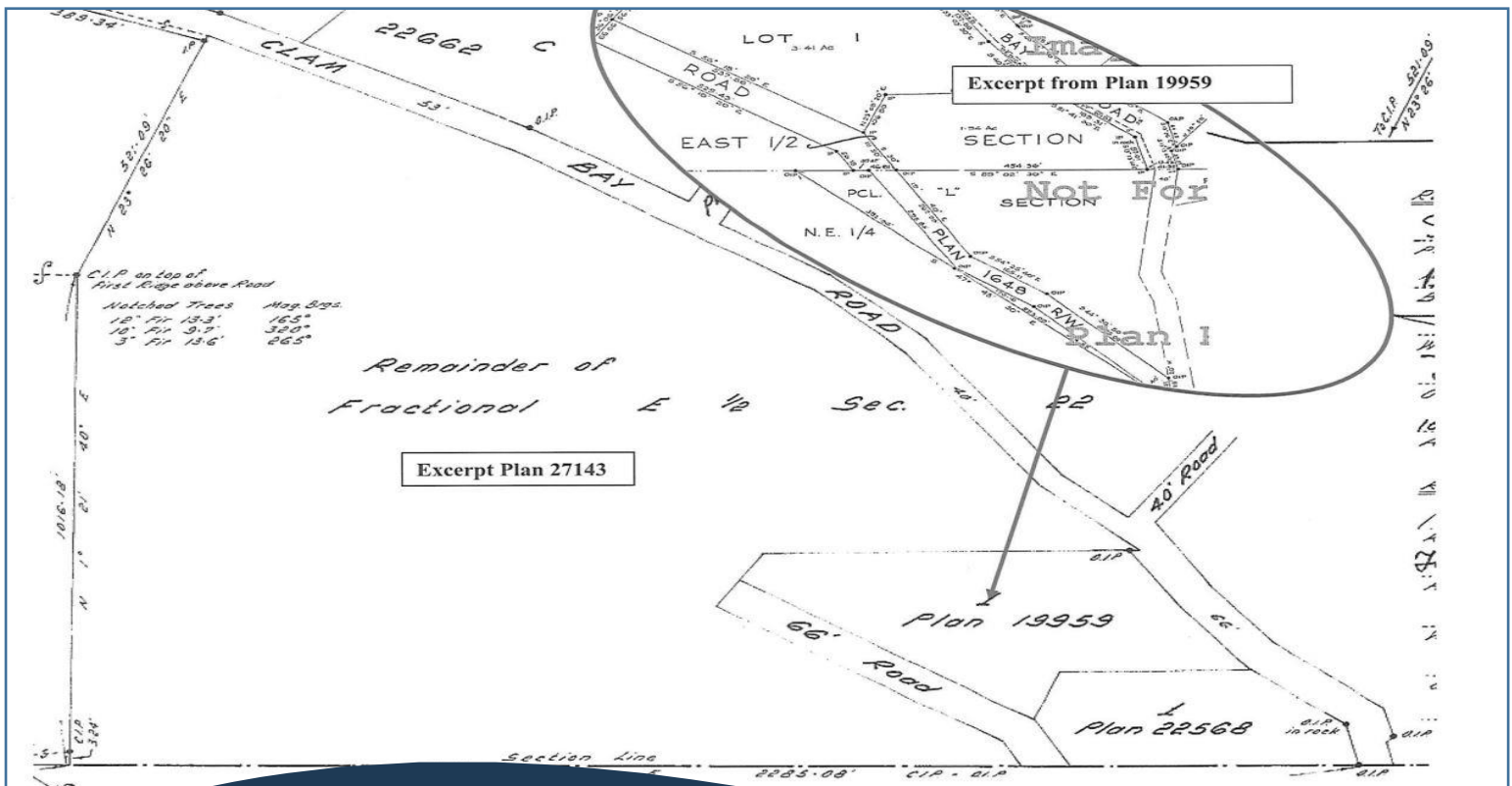
Driveway: Multiple

Bldg Scheme: No

Lot Features:

- Ocean Views
- Private Property
- Treed

Plot Plan and Aerial View



4201 Clam Bay Rd



1: 5,000



Pender Islands Map

Pender Islands British Columbia, Canada



**Subject Property
4201 Clam Bay Road**

- Dockside Realty
- Public Wharf
- Boat Launch
- Float Plane
- Firehall
- Medical Centre
- Municipal
- Place of Worship
- Campground
- Walking Trail
- Ocean Access/View

Map courtesy of Dockside Realty. Design Copyright © 2012 Minsky Designs www.minskydesigns.com. All rights reserved.

DISCLAIMER: While every effort is made to provide reliable information, Dockside Realty Ltd. makes no representations or warranties as to the accuracy of this brochure.

All measurements are approximate and the buyer is responsible for verifying all data provided.



Pender Island • Saturna Island • Vancouver Island

www.DocksideRealty.ca

info@DocksideRealty.ca • 250-629-3383