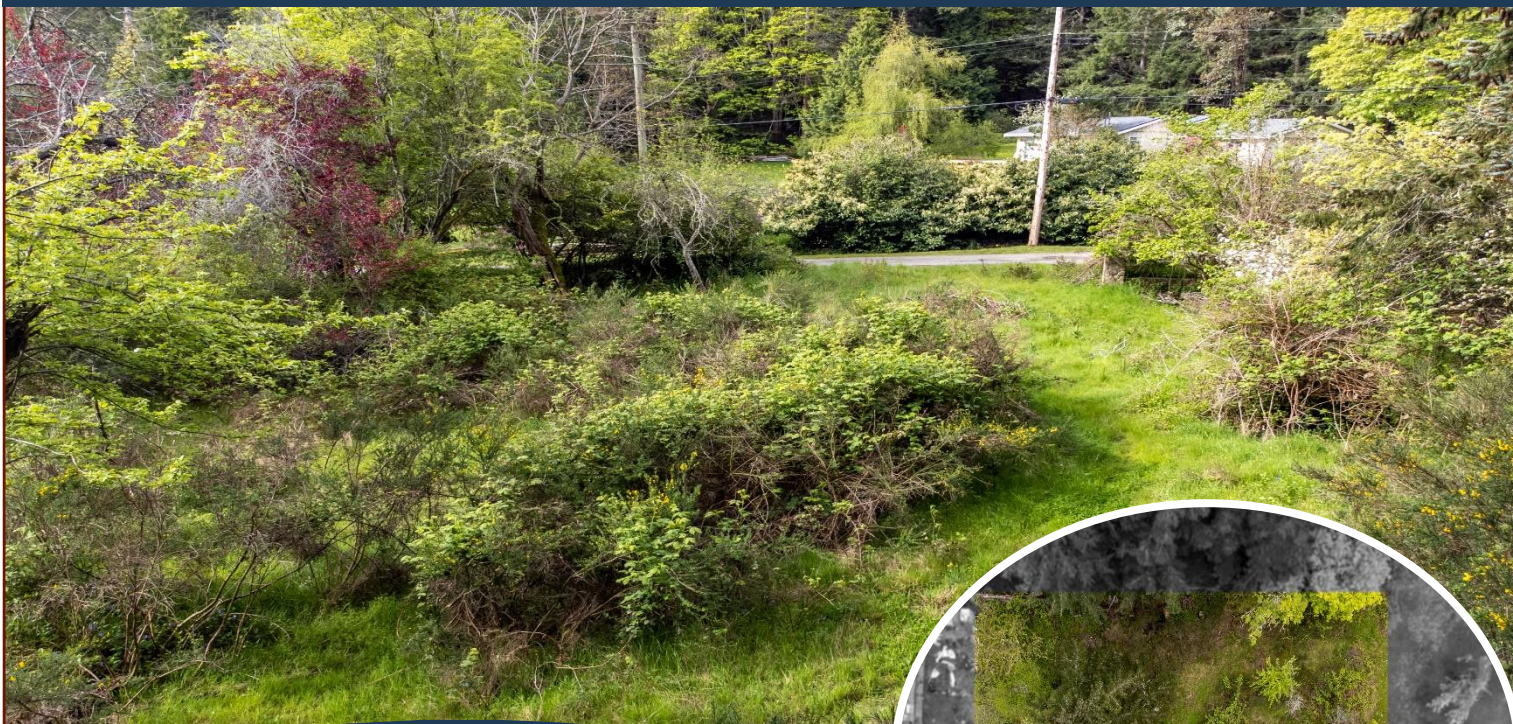
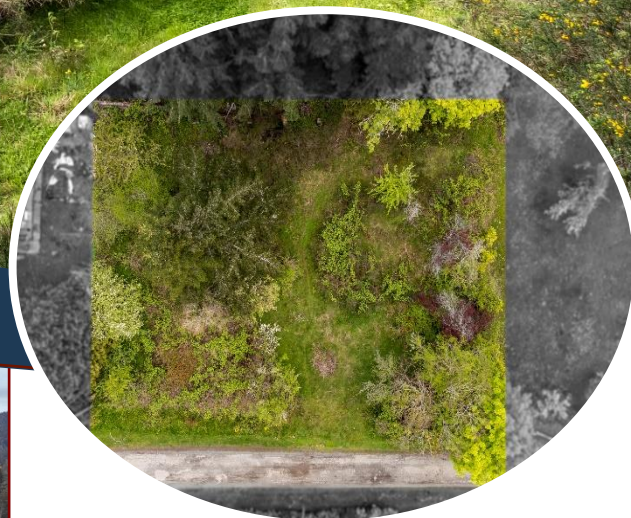


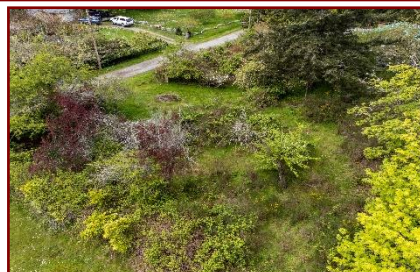
# Peace and Tranquility!



4226 Armadale Rd



4226 Armadale Rd



**Great opportunity! Price reduced to reflect the need for a drilled well and a septic system. Peace and tranquility on Pender Island! Beautiful, sunny, level building lot in the historic Hope Bay area of North Pender Island. Private and quiet, yet minutes to Hope Bay shopping, restaurants, golf course, marina, ferries and Community Hall with Saturday market. Favourite local beaches, walking and hiking trails are steps away. The sunny exposure creates the perfect location for a garden or patio spaces. Properties in this area are rarely available.**

**Dockside Realty**  
Gulf Islands Vancouver Island

Pender Island • Saturna Island • Vancouver Island

[www.DocksideRealty.ca](http://www.DocksideRealty.ca)

[info@DocksideRealty.ca](mailto:info@DocksideRealty.ca) • 250-629-3383



# Property Details



4226 Armadale Rd



**Lot Acres:** 0.31

**Water:** Drilled well required

**Waste:** Septic system required

**Services:** At lot line

**Driveway:**

**Bldg Scheme:** No

**Lot Features:**

- Quiet, rural setting in historic Hope Bay area
- Sunny
- Private
- Partially cleared with mature plants
- Level building site
- Close to ferry, float plane, marina, golf course, shopping, beaches, walking and hiking trails





# Plot Plan and Aerial View

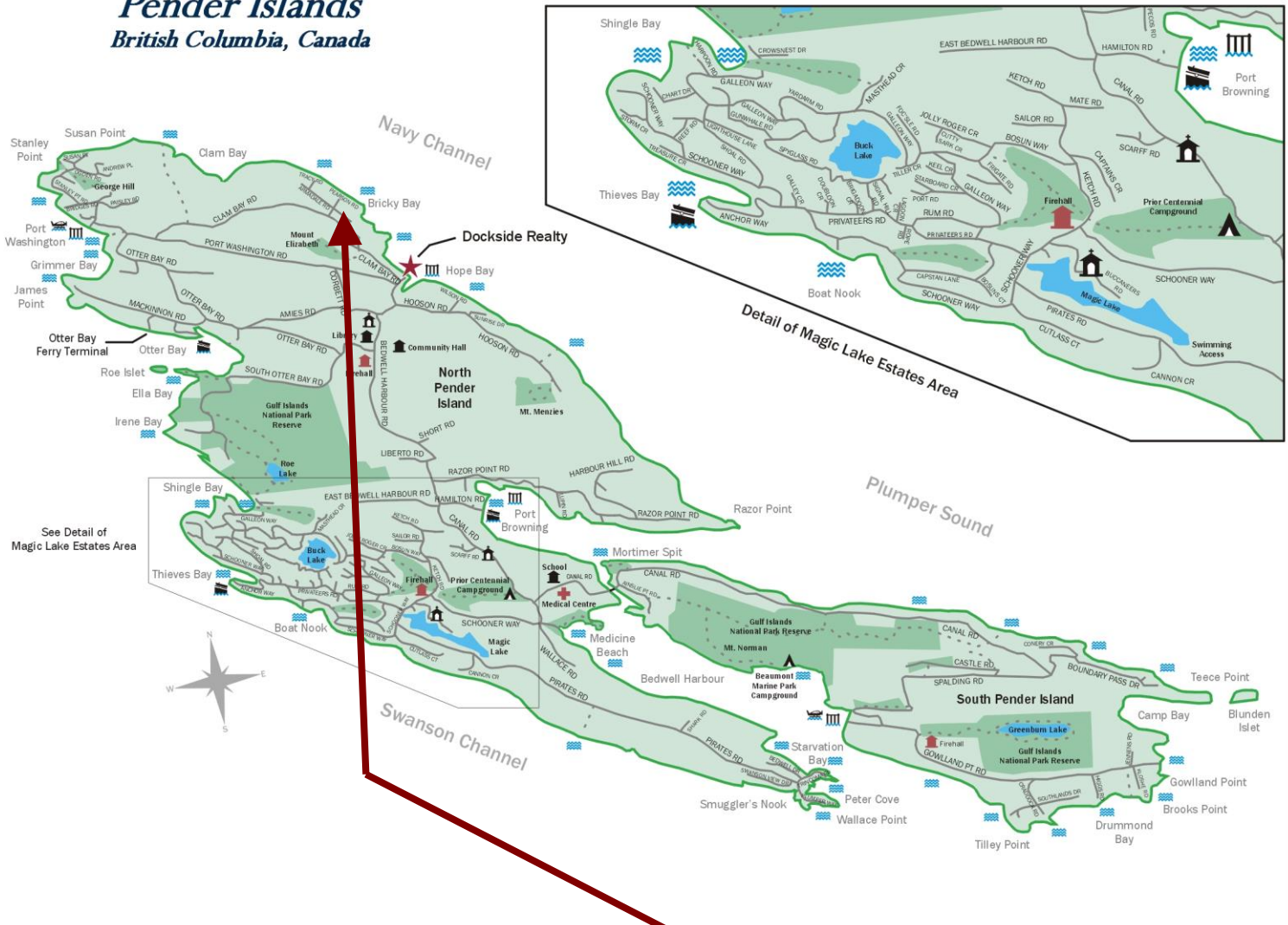


4226 Armadale Rd



# Pender Islands Map

## Pender Islands British Columbia, Canada



**Subject Property**  
**4226 Armadale Road**

- ★ Dockside Realty
- Public Wharf
- Boat Launch
- Float Plane
- Firehall
- Medical Centre
- Municipal
- Place of Worship
- Campground
- Walking Trail
- Ocean Access/View

Map courtesy of Dockside Realty. Design Copyright © 2012 Minsky Designs www.minskydesigns.com. All rights reserved.

**DISCLAIMER:** While every effort is made to provide reliable information, Dockside Realty Ltd. makes no representations or warranties as to the accuracy of this brochure.  
All measurements are approximate and the buyer is responsible for verifying all data provided.



Pender Island • Saturna Island • Vancouver Island  
www.DocksideRealty.ca  
info@DocksideRealty.ca • 250-629-3383