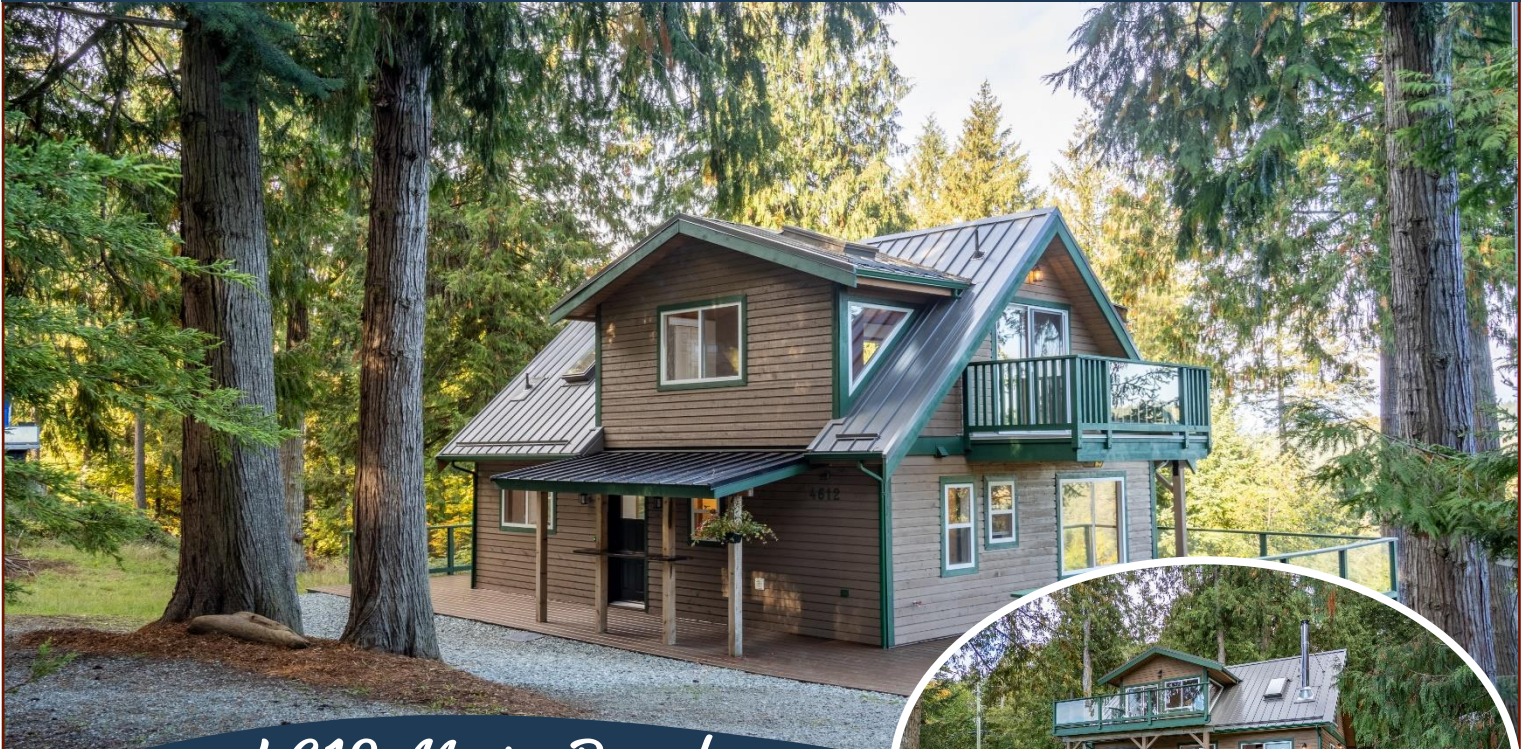


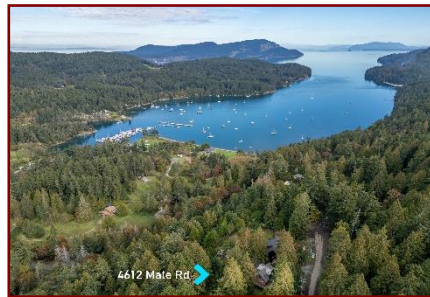
Oceanview Home!



4612 Mate Road



This Ocean View home has an In-Law Suite/guest accommodation, with spacious 3bed 2bath offering the perfect blend of comfort, with ocean views from the upper level. Open living ideal for relaxing, with vaulted ceilings a modern kitchen with all new appliances and cupboards. Main level has a full bathroom and primary bedroom featuring one level living. Upstairs, the large loft/2nd bedroom provides ample space for relaxation, boasting partial ocean views. Both bathrooms are tastefully updated, modern fixtures and plenty of space. The feature is the separate in-law suite, complete with its own entrance, self-contained guest accommodation is perfect for extended family/rental unit with added flexibility and privacy. Large decks and balconies on all levels with parking for 3 vehicles + RV. This quiet Cul-de sac is close to a marina with year-round moorage. Don't miss this unique opportunity—schedule your showing today! All measurements are approximate, buyers and their realtors to verify.



Pender Island • Saturna Island • Vancouver Island

www.DocksdeRealty.ca

info@DocksdeRealty.ca • 250-629-3383

Property Details



4612 Mate Road



Year Built (est):
2000

Lot Acres: 0.45

Bedrooms: 3

Bathrooms: 2

Fin SqFt: 1,625

Unfin SqFt: 1,700

Bsmt: Full, Walk-out
access with windows

Bsmt Height: 8 ft

Water: Municipal

Waste: Septic
System

Driveway: Gravel,
RV Access

Foundation:
Concrete Poured

Roof: Metal

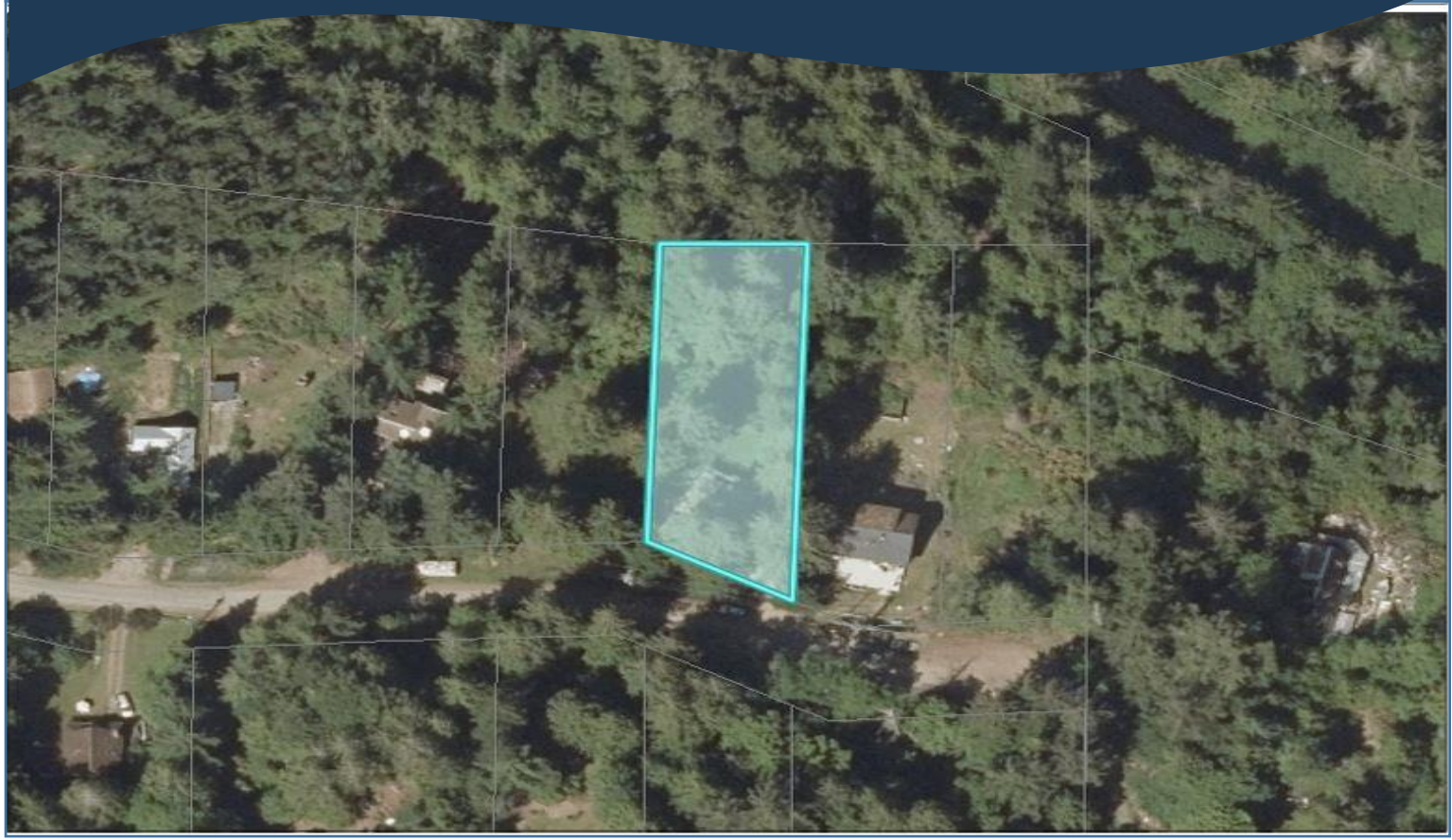
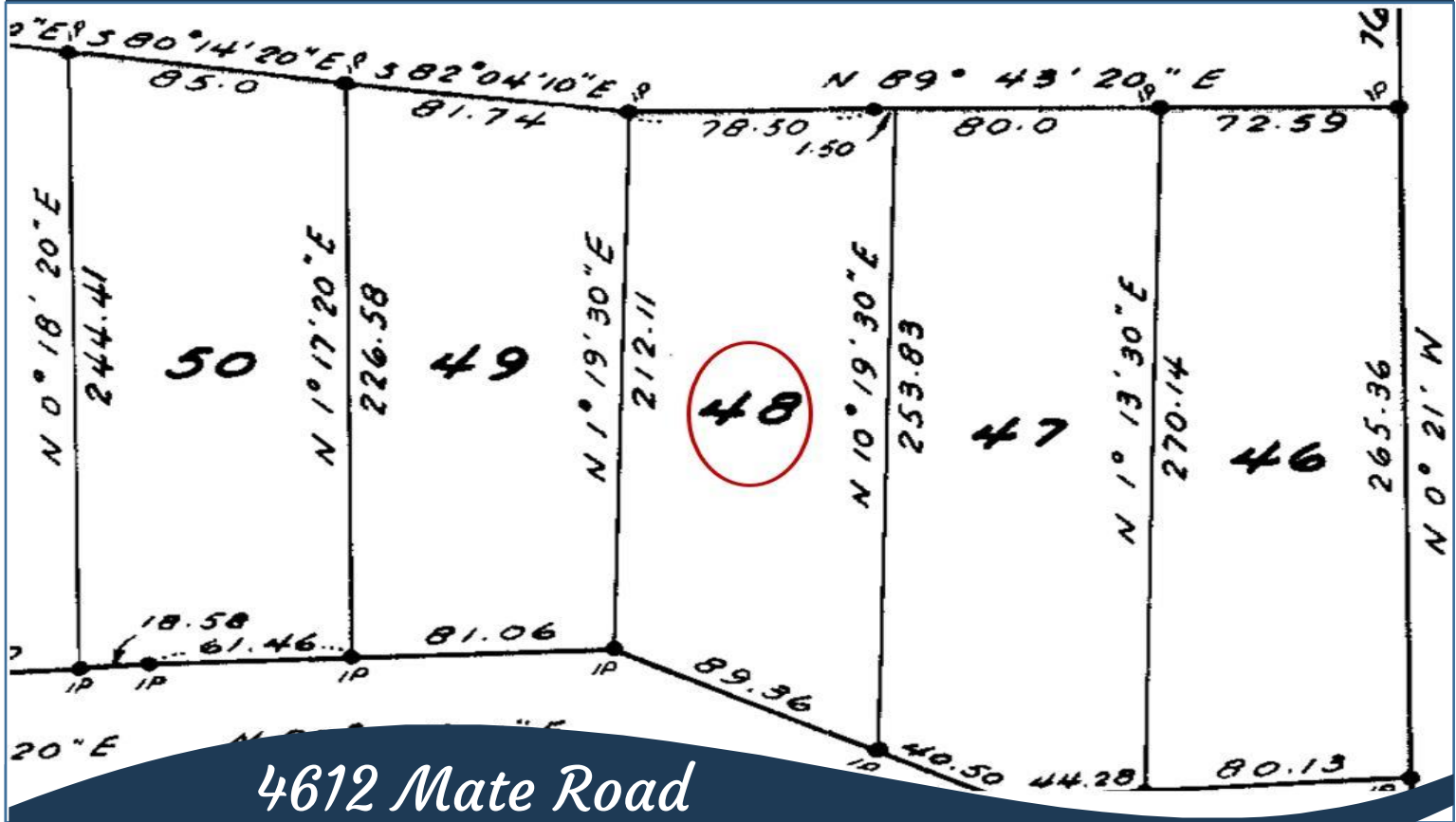
Ext Fin: Wood

Heat: Baseboard,
Wood

Lot Features:

- Cul-de-sac
- Oceanview
- Easy Access
- Family Oriented
Neighbourhood
- Magic Lake Estates
with access to
Thieves Bay marina &
tennis courts

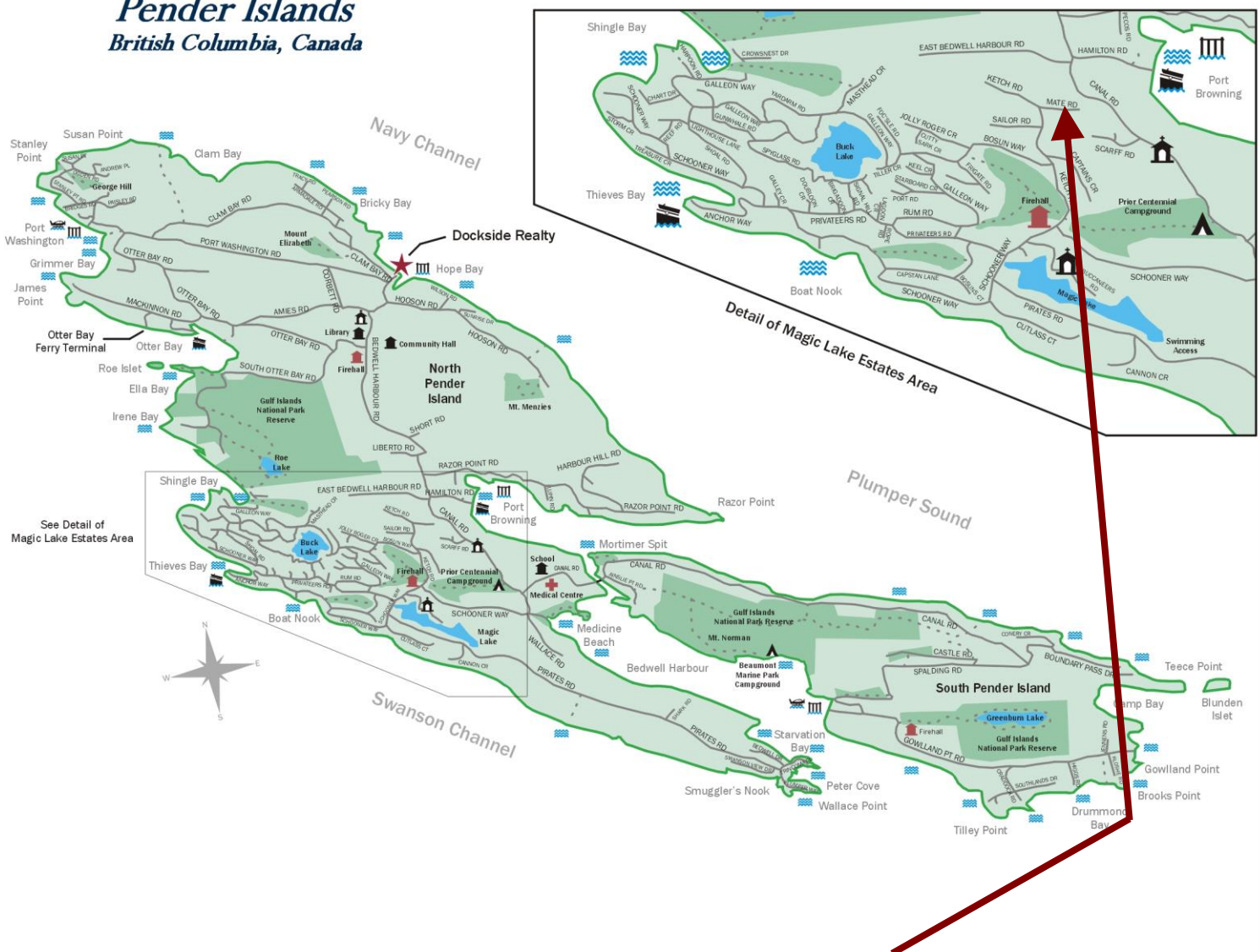
Plot Plan and Aerial View



Pender Island • Saturna Island • Vancouver Island
www.DocksdeRealty.ca
info@DocksdeRealty.ca • 250-629-3383

Pender Islands Map

Pender Islands British Columbia, Canada



**Subject Property
4612 Mate Road**

- Dockside Realty
- Public Wharf
- Boat Launch
- Float Plane
- Firehall
- Medical Centre
- Municipal
- Place of Worship
- Campground
- Walking Trail
- Ocean Access/View

Map courtesy of Docksde Realty. Design Copyright © 2012 Minsky Designs www.minskydesigns.com. All rights reserved.

DISCLAIMER: While every effort is made to provide reliable information, Docksde Realty Ltd. makes no representations or warranties as to the accuracy of this brochure.

All measurements are approximate and the buyer is responsible for verifying all data provided.



Pender Island • Saturna Island • Vancouver Island

www.DocksdeRealty.ca

info@DocksdeRealty.ca • 250-629-3383