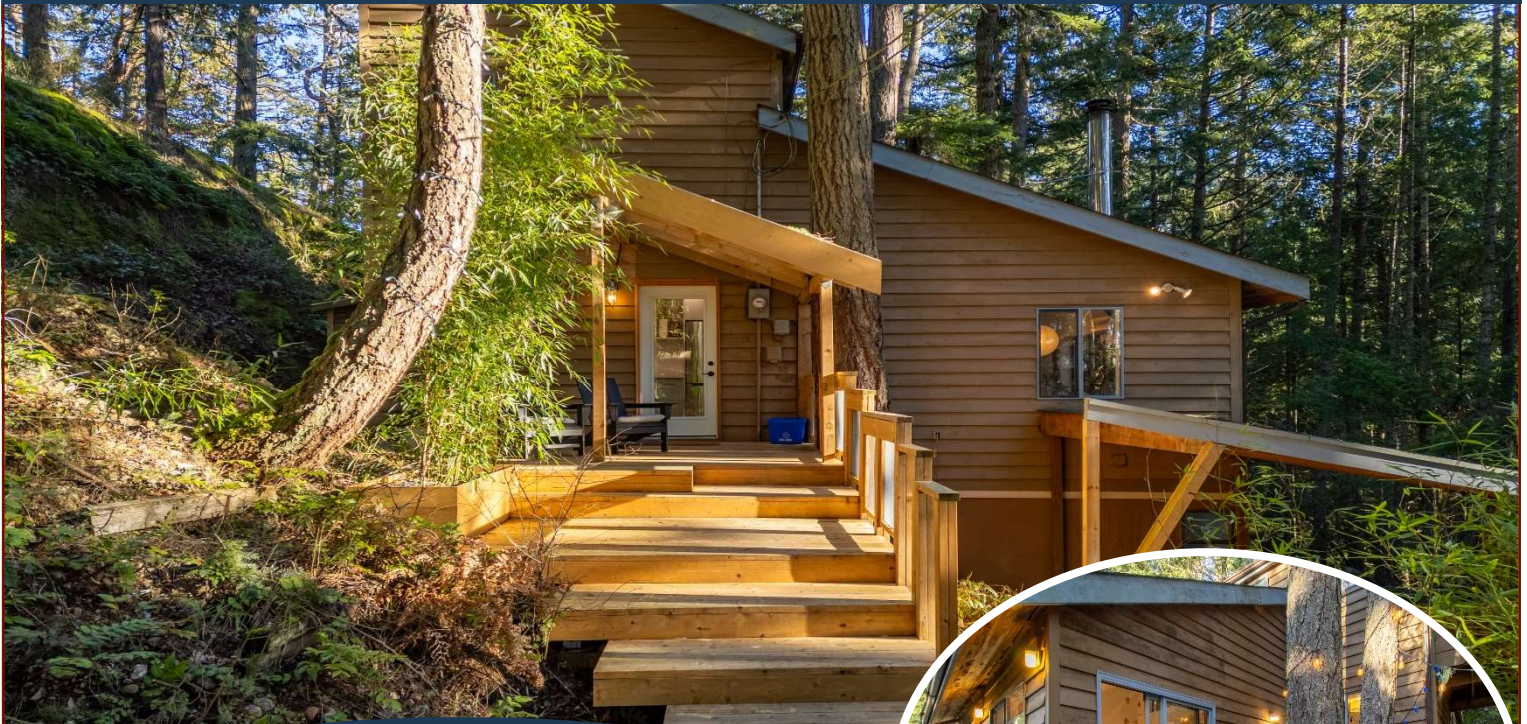


Updated, Modern Home!



4708 Captains Cres



This beautifully updated 2BR, 2BA home features a versatile loft, offering the perfect blend of modern luxury. Nestled on a large, private lot, this south-facing gem is bathed in natural light and surrounded by lush greenery, creating a tranquil treehouse-like atmosphere. Discover a fully renovated kitchen, complete with sleek countertops, premium appliances, and ample storage, making it a chef's delight. Bathrooms have also been thoughtfully updated with contemporary finishes, offering a spa-like experience. Spacious living areas flow seamlessly onto large south-facing decks, ideal for entertaining, relaxing, or simply soaking in the serene views. The loft adds extra flexibility, perfect for a home office, studio, or additional living space. This property offers endless possibilities for outdoor enjoyment. Don't miss this rare opportunity to own a slice of paradise with modern upgrades in a treehouse inspired setting. Measurements are approximate and furniture is negotiable.

Property Details



4708 Captains Cres



Year Built (est):
1981

Lot Acres: 0.69

Bedrooms: 2

Bathrooms: 2

Fin SqFt: 1,082

Unfin SqFt: 0

Bsmt: Crawl space,
partial, unfinished
with windows

Water: Municipal

Waste: Septic system

Driveway: Gravel/dirt

Foundation:

Concrete Poured,
Pillar/Post/Pier

Roof: Asphalt
shingle

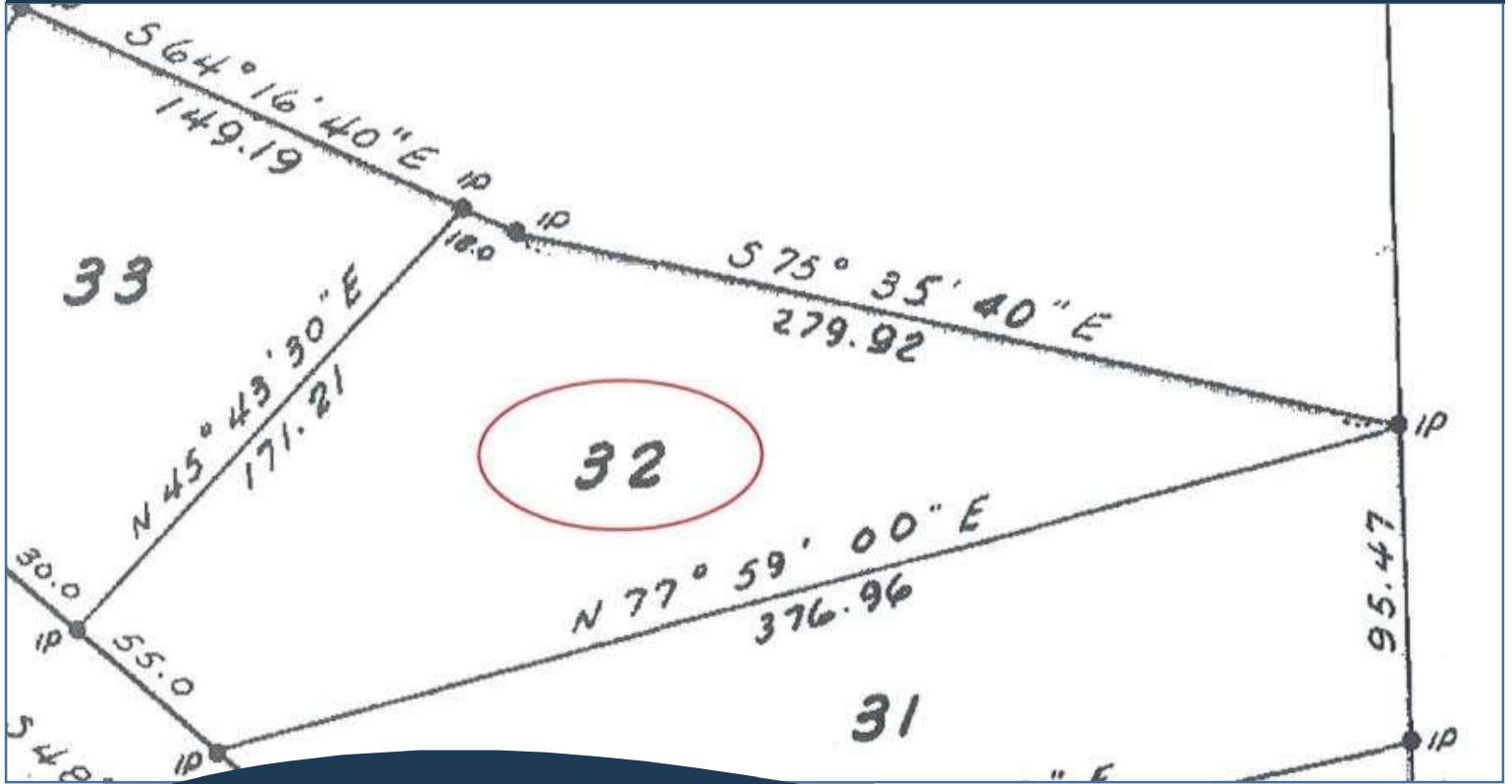
Ext Fin: Wood

Heat: Baseboard,
Electric, Heat pump,
Wood

Features:

- Updated with high-end finishings
- Primary bedroom on main level
- Large loft space
- Magic Lake Estates with access to Thieves Bay marina & tennis courts

Plot Plan and Aerial View



4708 Captains Cres



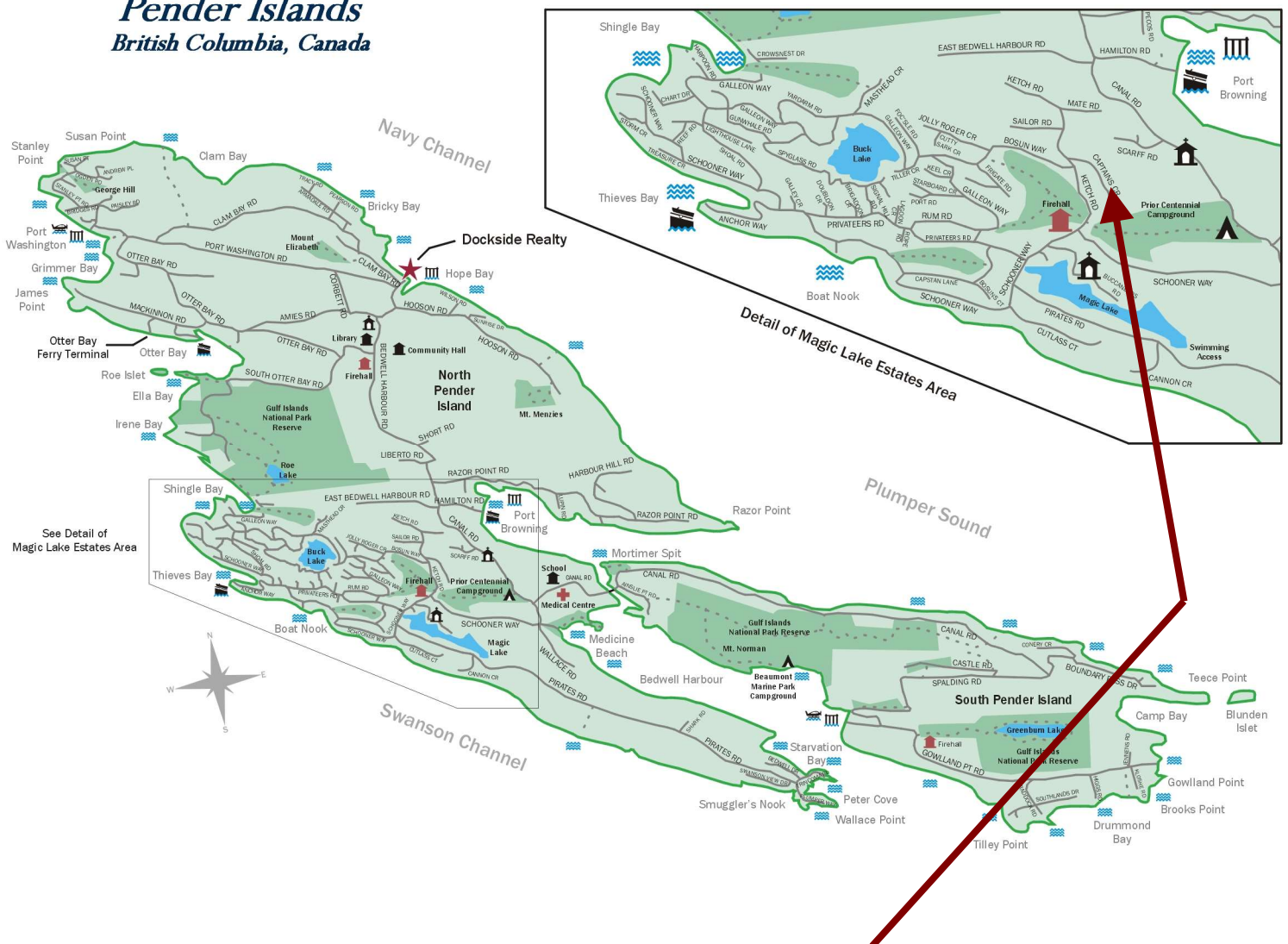
Pender Island • Saturna Island • Vancouver Island

www.DocksdeRealty.ca

info@DocksdeRealty.ca • 250-629-3383

Pender Islands Map

Pender Islands British Columbia, Canada



**Subject Property
4708 Captains Cres**

- Dockside Realty
- Public Wharf
- Boat Launch
- Float Plane
- Firehall
- Medical Centre
- Municipal
- Place of Worship
- Campground
- Walking Trail
- Ocean Access/View

Map courtesy of Dockside Realty. Design Copyright © 2012 Minsky Designs www.minskydesigns.com. All rights reserved.

DISCLAIMER: While every effort is made to provide reliable information, Dockside Realty Ltd. makes no representations or warranties as to the accuracy of this brochure.

All measurements are approximate and the buyer is responsible for verifying all data provided.



Pender Island • Saturna Island • Vancouver Island

www.DocksideRealty.ca

info@DocksideRealty.ca • 250-629-3383