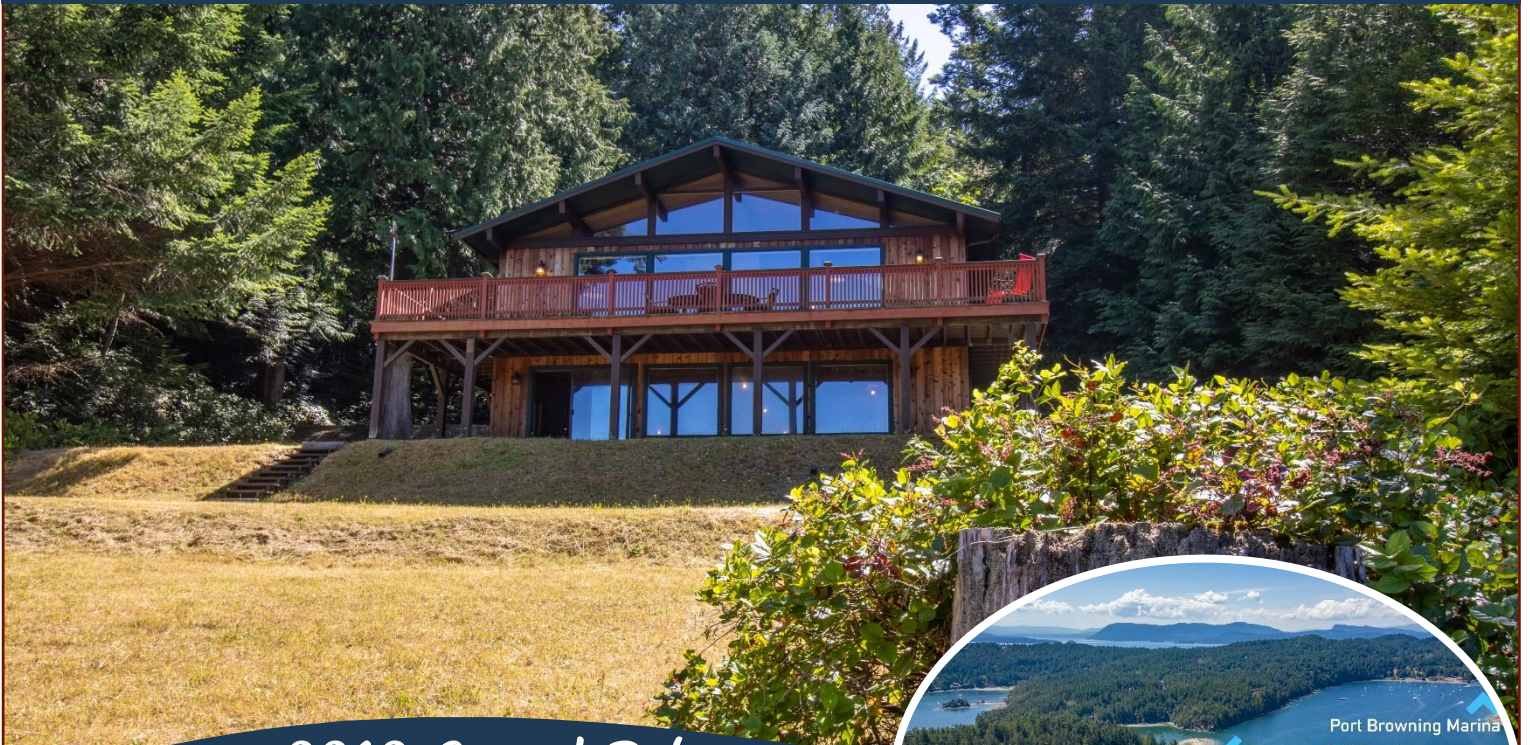


# Oceanfront Family Cottage!



8818 Canal Rd



***Oceanfront Family Cottage with Steps to a Secluded Beach! This lovely, custom built Lyndal Cedar Home on 1.03 acres has been owned & loved by the same family since it was constructed in 1976. Extremely well maintained for its age, it features 3BR, 2BA on the approximately 1200 sqft main floor, plus another 1200 sqft of bright, unfinished basement with full height ceilings & walk-out access to the lower half of the property. Cozy up to the wood burning fireplaces on the colder nights in the fall & winter months. Soak in the serenity & expansive ocean views from the giant wrap-around deck & become one with nature! The lower floor is on a full concrete slab, so this can easily be finished to add additional living space. Take the steps down to the ocean & launch your kayak or paddleboard. Decades of wonderful memories have been created & treasured in this idyllic setting on beautiful South Pender Island. Now it is your turn!***



**Dockside Realty**  
Gulf Islands Vancouver Island

Pender Island • Saturna Island • Vancouver Island

[www.DocksideRealty.ca](http://www.DocksideRealty.ca)

[info@DocksideRealty.ca](mailto:info@DocksideRealty.ca) • 250-629-3383



# Property Details



8818 Canal Rd



**Year Built (est):**  
1976

**Lot Acres:** 1.03

**Bedrooms:** 3

**Bathrooms:** 2

**Fin SqFt:** 1,200

**Unfin SqFt:** 1,200

**Bsm't:** Unfinished,  
Walk-out access with  
windows

**Bsm't Height:** 8'6"

**Water:** Drilled well

**Waste:** Septic system

**Driveway:** Dirt

**Foundation:**  
Concrete Poured

**Roof:** Metal

**Ext Fin:** Wood

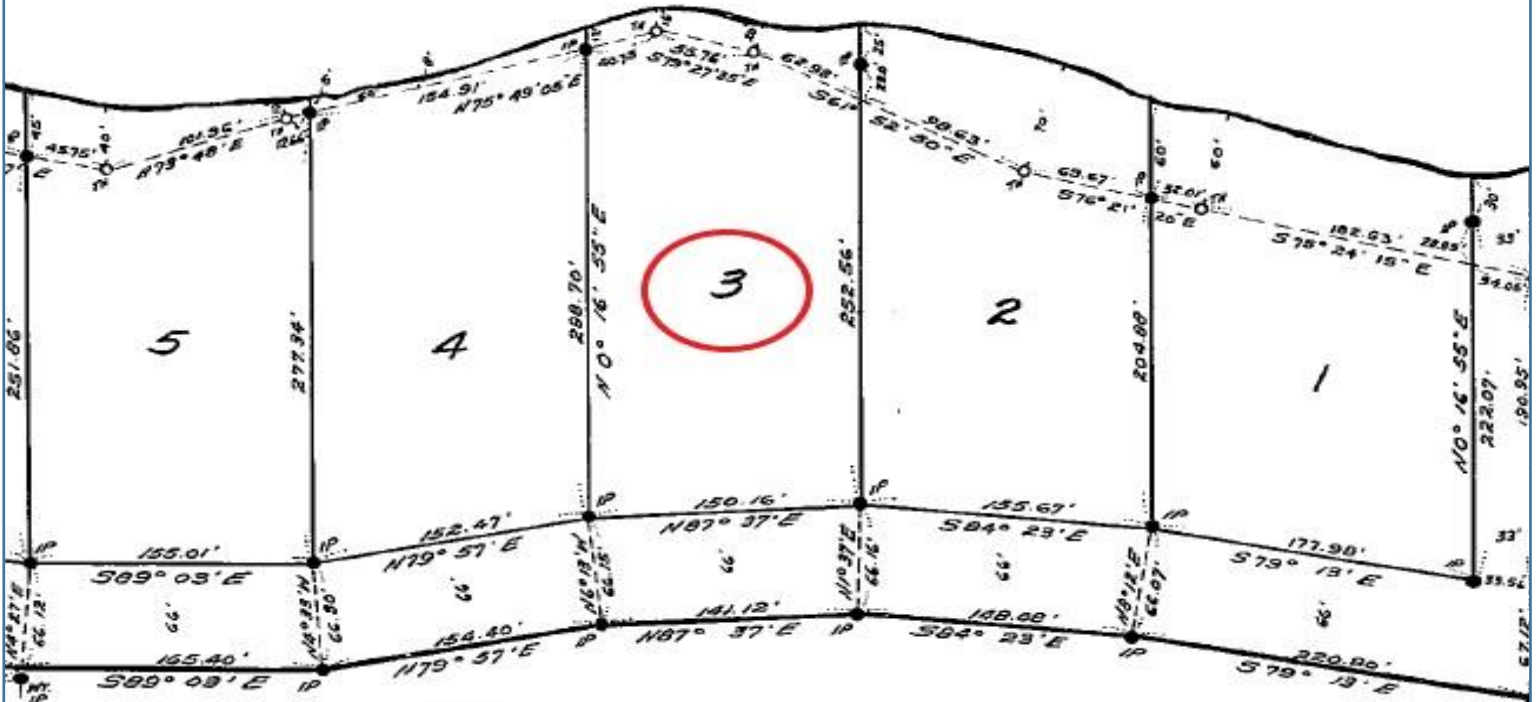
**Heat:** Baseboard,  
Electric, Wood

**Lot Features:**

- Oceanfront
- Acreage
- Stairs to secluded,  
sandy beach
- Expansive views
- Wrap-around deck
- Large oceanside  
yard
- Walk out lower level



# Plot Plan and Aerial View

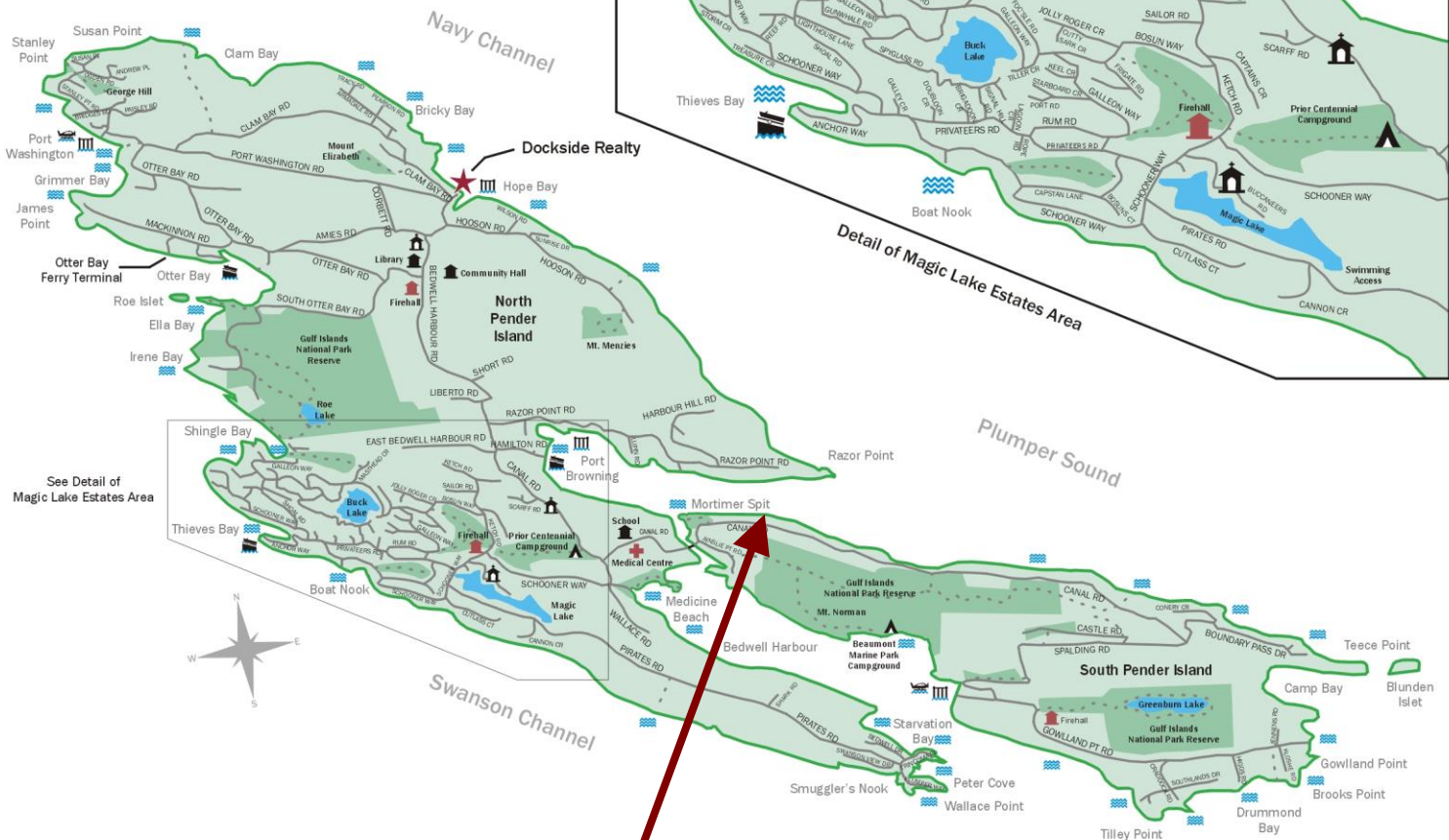
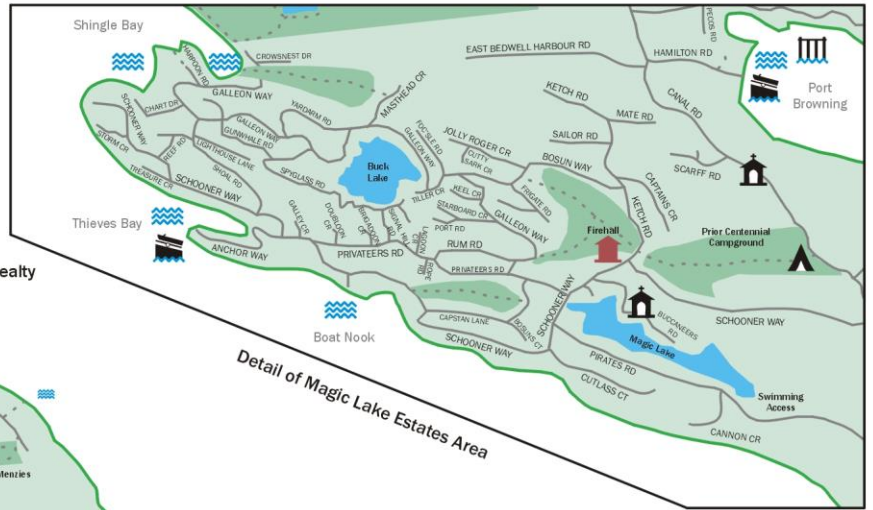


8818 Canal Rd



# Pender Islands Map

## Pender Islands British Columbia, Canada



**Subject Property**  
8818 Canal Rd

- Dockside Realty
- Public Wharf
- Boat Launch
- Float Plane
- Firehall
- Medical Centre
- Municipal
- Place of Worship
- Campground
- Walking Trail
- Ocean Access/View

Map courtesy of Dockside Realty. Design Copyright © 2012 Minsky Designs www.minskydesigns.com. All rights reserved.

**DISCLAIMER:** While every effort is made to provide reliable information, Dockside Realty Ltd. makes no representations or warranties as to the accuracy of this brochure.

All measurements are approximate and the buyer is responsible for verifying all data provided.



Pender Island • Saturna Island • Vancouver Island

www.DocksideRealty.ca

info@DocksideRealty.ca • 250-629-3383