

Legacy Property!



960 Lavender Avenue



Jewel of the Neighbourhood! 960 Lavender Ave. has been owned & loved by the same family for over 60 years! This is truly a unique offering, situated on a massive 0.26 acres of level, sunny, landscaped property, at the end of a quiet cul-de-sac. The approximately 2200-sqft, 4BR, 2BA character home was constructed in 1925 & has been very well maintained over time, with all of the key elements updated. Giant 9'6" ceilings on the main floor allow for streaming natural light & make the home feel much larger. Lower floor has 6'6" ceilings, 2BR, 1BA, plus a sizable rec room & laundry. Immaculately cared for inside & out, this home & property are move-in ready. Cosmetic updating should be very straightforward & there is potential to add real value here. Established gardens, with mature pear, apple, plum & fig trees, plus a detached 14'x12' garden shed. There is even an authentic outdoor wood-fired brick oven! Don't let this once in a lifetime opportunity pass you by!



Dockside Realty
Gulf Islands Vancouver Island

Pender Island • Saturna Island • Vancouver Island

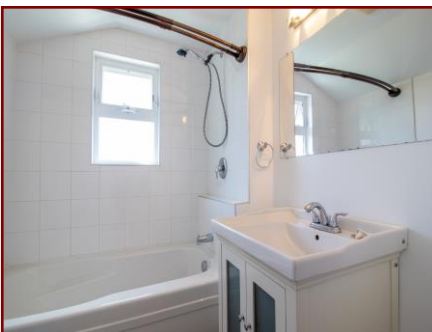
www.DocksideRealty.ca

info@DocksideRealty.ca • 250-629-3383

Property Details



960 Lavender Avenue



Year Built (est):
1925

Lot Acres: 0.26

Bedrooms: 4

Bathrooms: 2

Fin SqFt: 2,200

Bsmt: 6'.6"

Water: Municipal

Waste: Sewer

**Detached Garden
Shed**

Foundation:
Concrete Poured

Roof: Asphalt

Ext Fin: Stucco

Fuel: Electric

Heat: Forced Air
Electric

FP Location: Living
Room

Lot Features:
- Landscaped
- Fruit Trees
- Wood Fired Oven
- Total Privacy
- Fenced garden

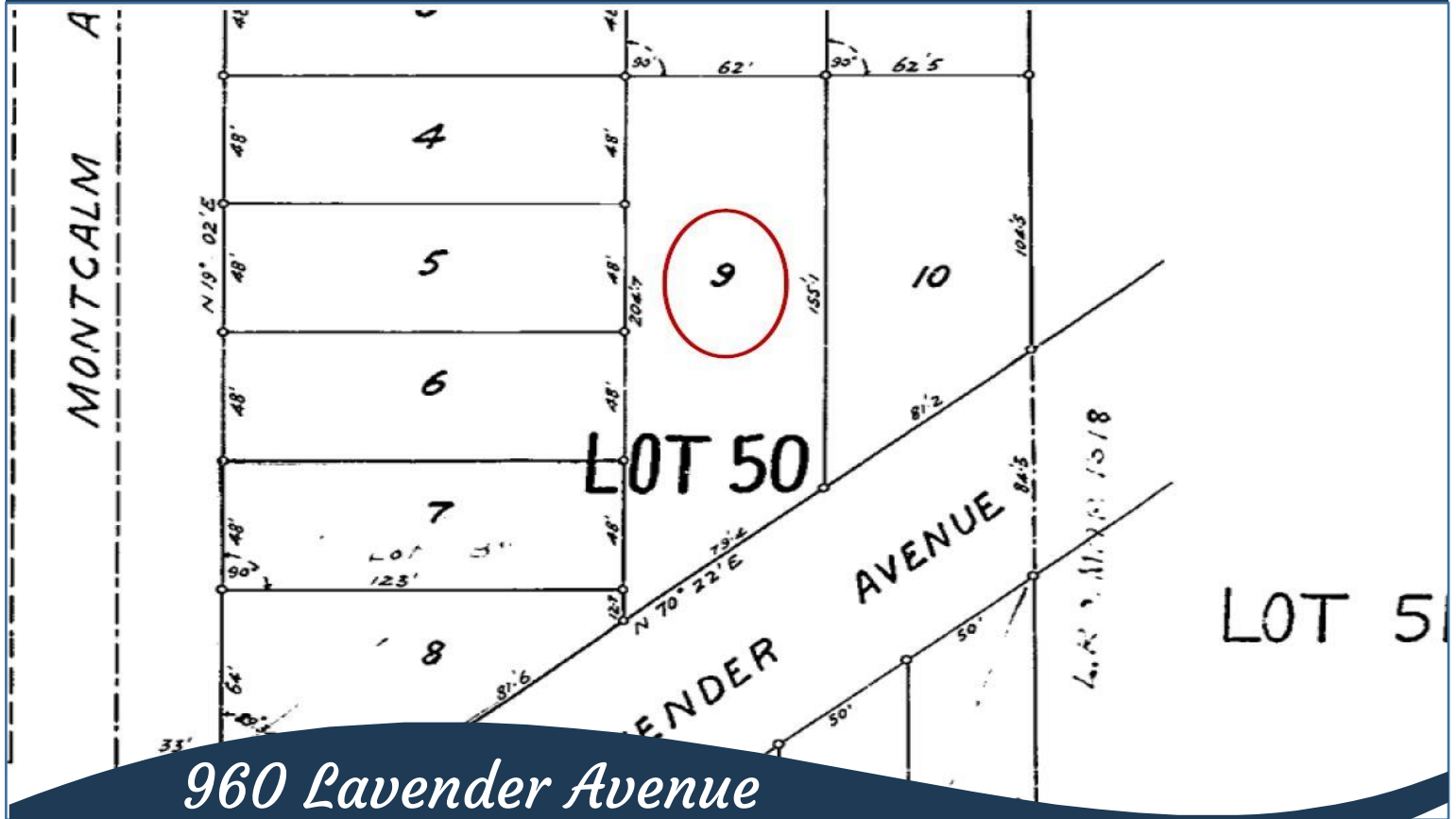


Pender Island • Saturna Island • Vancouver Island

www.DocksdeRealty.ca

info@DocksdeRealty.ca • 250-629-3383

Plot Plan and Aerial View



960 Lavender Avenue



Pender Island • Saturna Island • Vancouver Island

www.DocksdeRealty.ca

info@DocksdeRealty.ca • 250-629-3383

Google Area Map



DISCLAIMER: While every effort is made to provide reliable information, Dockside Realty Ltd. makes no representations or warranties as to the accuracy of this brochure.

All measurements are approximate, the buyer is responsible for verifying all data provided.