

# Great Potential!



9880 Castle Rd



**Great Potential! Custom designed to be a one bedroom one bathroom cottage; a good portion of the work has been done. Cottage is situated on a hillside acreage enjoying sun drenched Southern exposure with beautiful views & sunsets over pastoral Spalding Valley. There is a terraced hillside garden in the works and the sub-Mediterranean climate supports established Fig and Olive trees. Many building materials are onsite including a large cistern & 2 septic tanks. Drilled well in place; Pump House and Septic System required. This is a tranquil rural setting, yet several public beach access points, National Parks and Poets Cove Resort at Bedwell Harbour are just minutes away. Services at road include Hydro, Cable, and Internet. Bare Land Strata property includes access to many acres of common property with trail to scenic lookout.**



Pender Island • Saturna Island • Vancouver Island

[www.DocksdeRealty.ca](http://www.DocksdeRealty.ca)

[info@DocksdeRealty.ca](mailto:info@DocksdeRealty.ca) • 250-629-3383

# Property Details



9880 Castle Rd



**Year Built (est):**  
Unfinished

**Lot Acres:** 1.57

**Bedrooms:** 0

**Bathrooms:** 0

**Fin SqFt:** 0

**Bsmt:** None

**Water:** Drilled Well

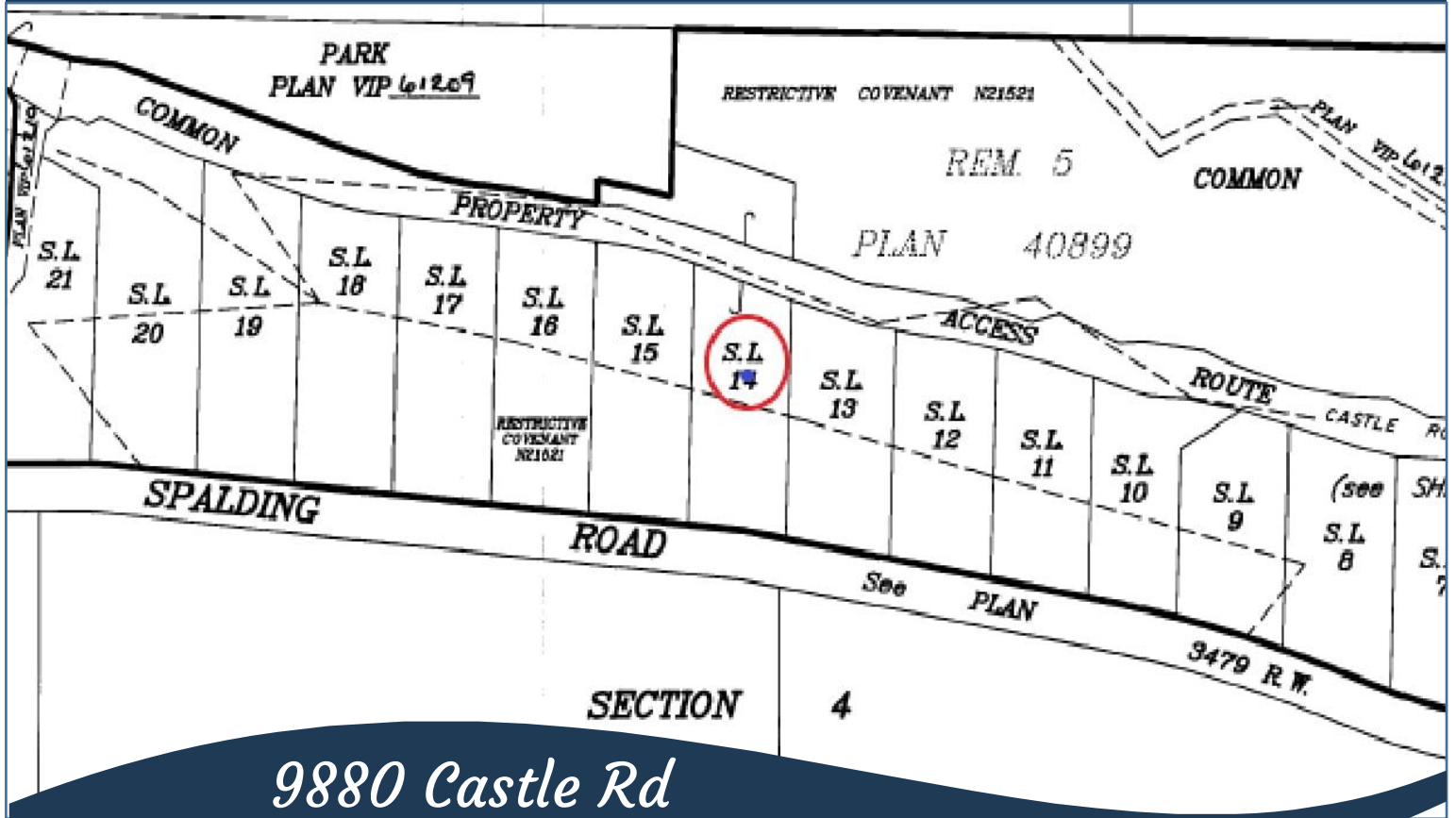
**Waste:** Septic  
System required

**Services at road:**  
Hydro, cable, internet

**Lot Features:**

- Valley view
- Acreage
- Southern exposure
- Quiet area
- Rural setting
- Close to beaches, walking trails, parks, Poet's Cove marina with restaurant/pub and moorage.

# Plot Plan and Aerial View



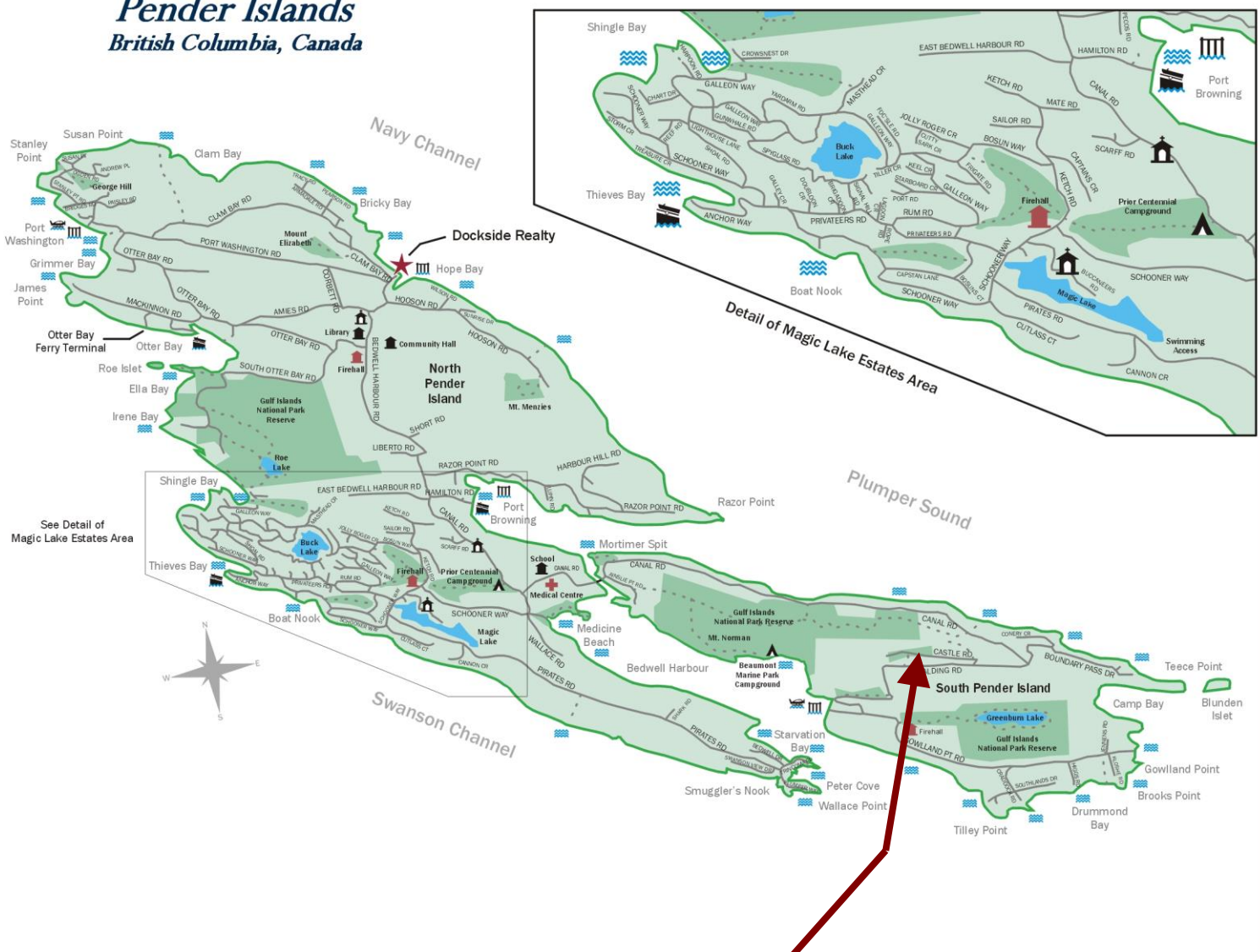
9880 Castle Rd



Pender Island • Saturna Island • Vancouver Island  
www.DocksdeRealty.ca  
info@DocksdeRealty.ca • 250-629-3383

# Pender Islands Map

## Pender Islands British Columbia, Canada



- Dockside Realty
- Public Wharf
- Boat Launch
- Float Plane
- Firehall
- Medical Centre
- Municipal
- Place of Worship
- Campground
- Walking Trail
- Ocean Access/View

**Subject Property  
9880 Castle Rd**

Map courtesy of Dockside Realty. Design Copyright © 2012 Minsky Designs www.minskydesigns.com. All rights reserved.

**DISCLAIMER:** While every effort is made to provide reliable information, Dockside Realty Ltd. makes no representations or warranties as to the accuracy of this brochure.

All measurements are approximate and the buyer is responsible for verifying all data provided.



Pender Island • Saturna Island • Vancouver Island  
[www.DocksideRealty.ca](http://www.DocksideRealty.ca)  
[info@DocksideRealty.ca](mailto:info@DocksideRealty.ca) • 250-629-3383