

# Park-Like Acreage Lot!

  
Tsawwassen

*Lot G - Ellis Rd*



***Fantastic opportunity to build your home or cabin on Galiano Island in a desirable location on a quiet, no-thru street. This level, 1.47-acre property is a park-like setting with lovely west-coast vegetation from mature fir trees to lush ferns. Walk or drive to beautiful Morning Beach to launch a kayak, swim or just enjoy the oceanviews. Minutes from local amenities such as the pub, grocery stores, golf course, community hall, medical clinic and ferry terminal. Requires a well and septic system.***

**Dockside Realty**  
Gulf Islands Vancouver Island

Pender Island • Saturna Island • Vancouver Island

[www.DocksideRealty.ca](http://www.DocksideRealty.ca)

[info@DocksideRealty.ca](mailto:info@DocksideRealty.ca) • 250-629-3383



# Property Details



*Lot G - Acreage Rd*



**Lot Acres:** 1.47

**Water:** Drilled well required

**Waste:** Septic system required

**Driveway:** None

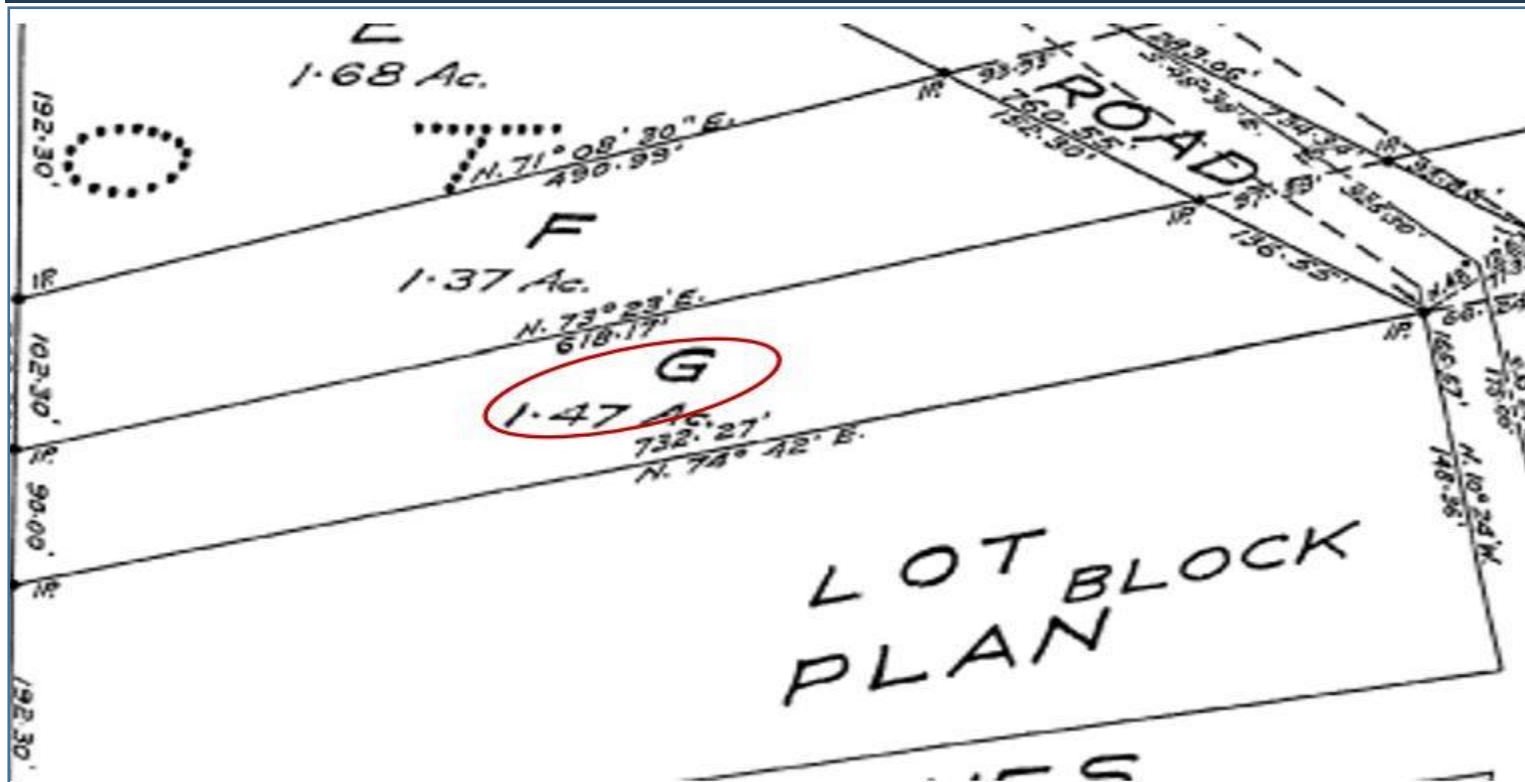
**Bldg Scheme:** No

**Lot Features:**

- Acreage
- Private, quiet area
- Treed
- Level building site
- Close to amenities



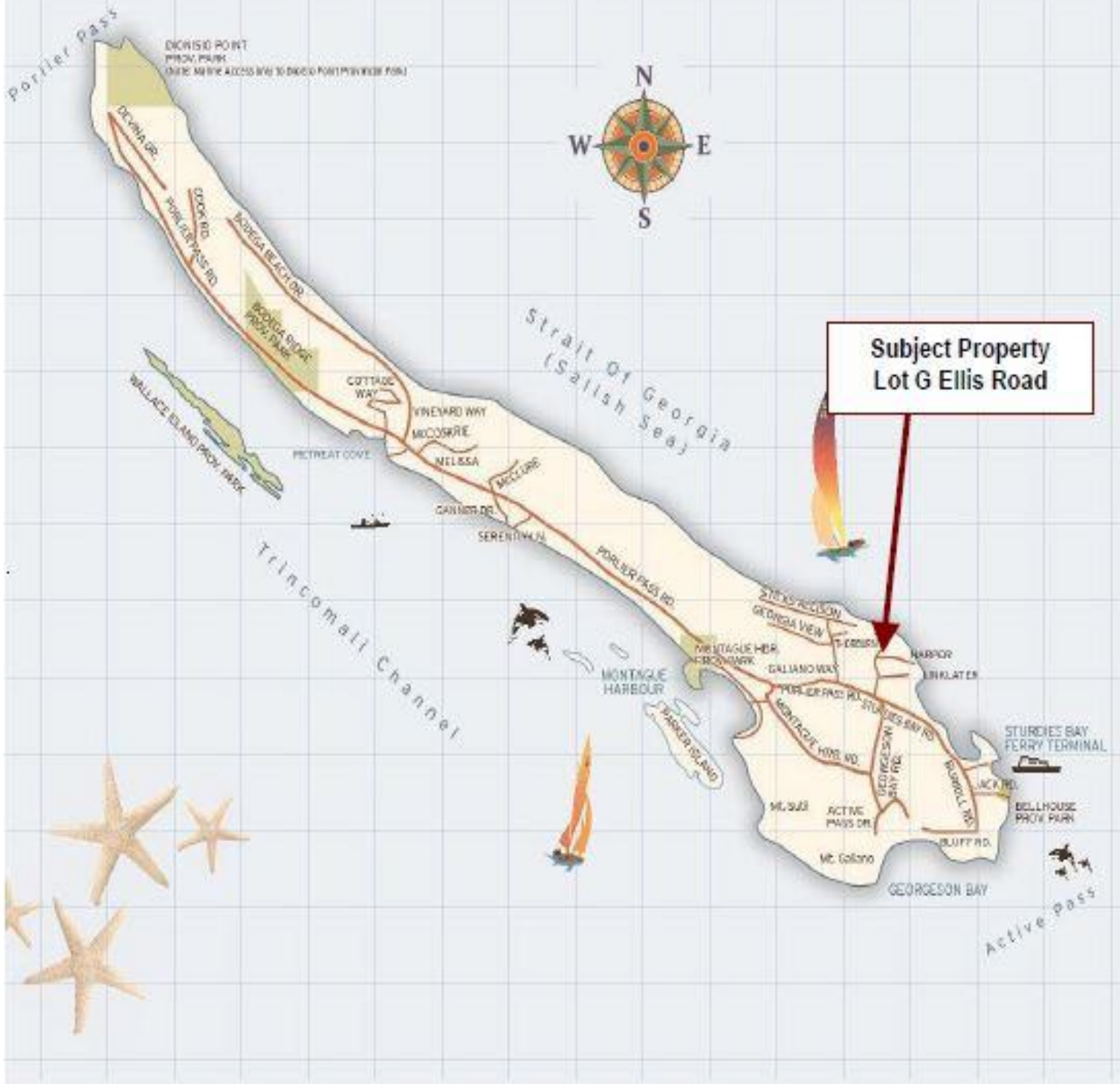
# Plot Plan and Aerial View



Lot G – Ellis Rd



# Galiano Islands Map



**DISCLAIMER:** While every effort is made to provide reliable information, Dockside Realty Ltd. makes no representations or warranties as to the accuracy of this brochure.  
All measurements are approximate and the buyer is responsible for verifying all data provided.



Pender Island • Saturna Island • Vancouver Island

[www.DocksideRealty.ca](http://www.DocksideRealty.ca)

[info@DocksideRealty.ca](mailto:info@DocksideRealty.ca) • 250-629-3383