

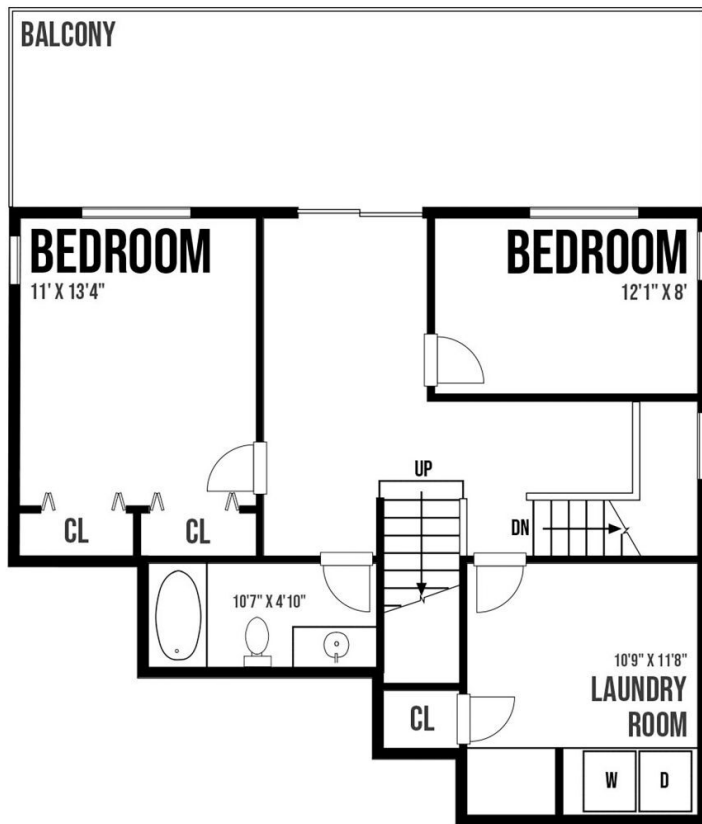
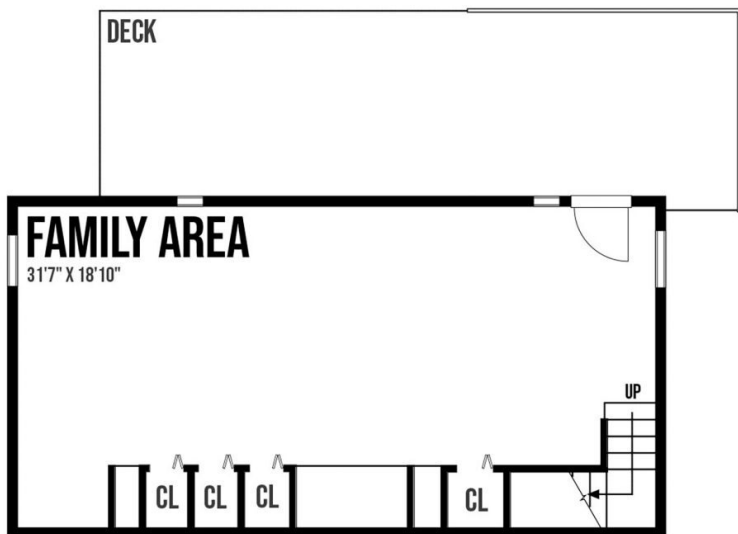
146 Winter Cove Rd



Main level:

Lower level:

Middle level:



Approximate internal sq ft:

Main level:

Living area: 350 sq ft

Dining area: 160 sq ft

Kitchen: 160 sq ft

Bedroom: 170 sq ft

Bathroom: 50 sq ft

Hallways: 160 sq ft

Deck: 640 sq ft

Middle level:

Bedroom: 150 sq ft

Bedroom: 100 sq ft

Bathroom: 60 sq ft

Laundry: 120 sq ft

Hallways: 230 sq ft

Deck: 300 sq ft

Lower level:

Family area: 470 sq ft

Deck: 330 sq ft

Prepared for the exclusive use of Michael Vautour and Dockside Realty Ltd.
All measurements are approximate and Buyer to verify if important.

