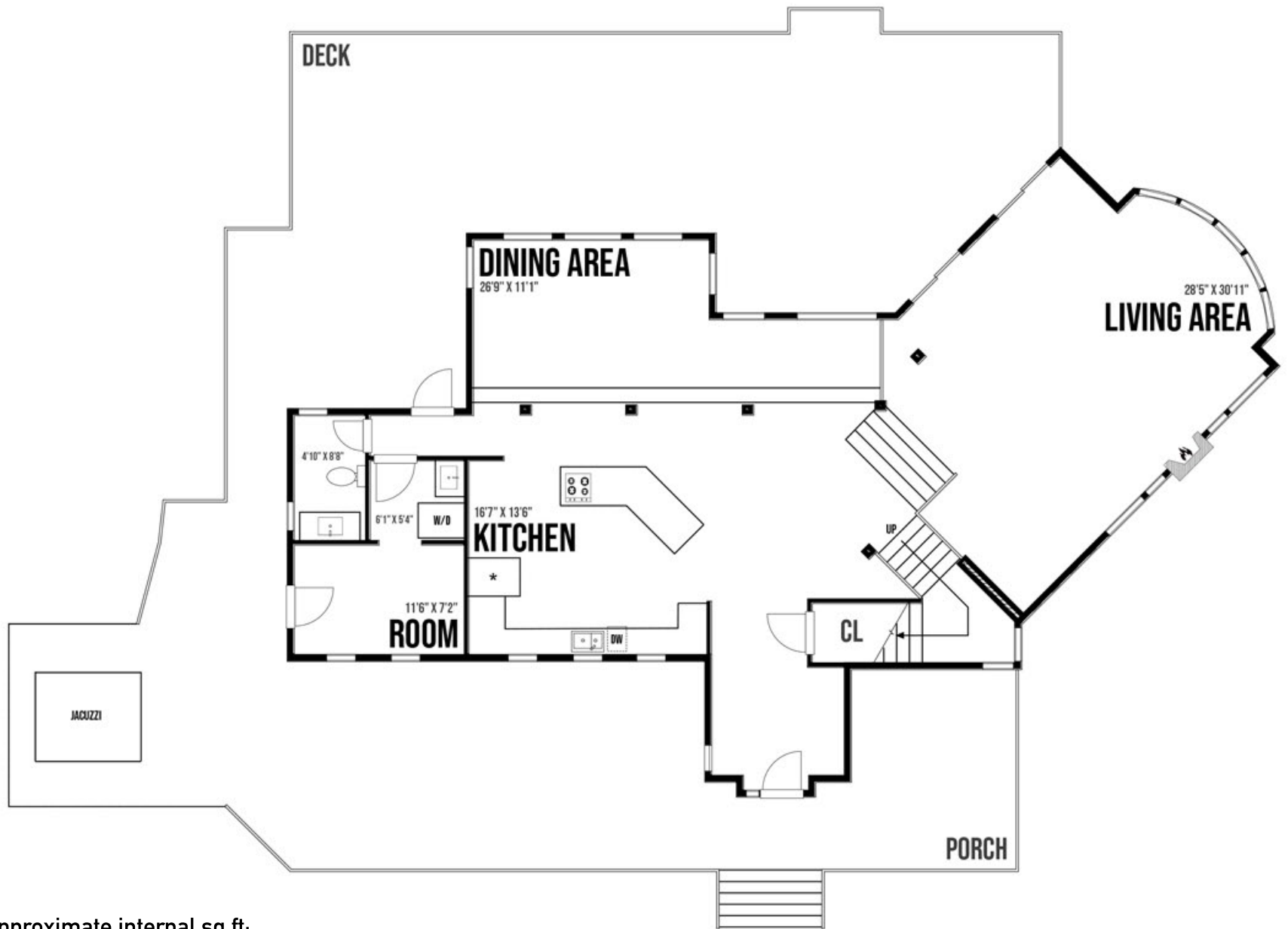


5805 Pirates Rd - Pender Island



Approximate internal sq ft:

Main level:

Living area: 520 sq ft

Kitchen: 350 sq ft

Dining area: 250 sq ft

Hallways: 300 sq ft

Mudroom: 90 sq ft

Laundry: 40 sq ft

Bathroom: 50 sq ft

Deck: 1500 sq ft

Porch: 600 sq ft

Main level: 1600 sq ft internal

Upper level:

Primary bedroom: 265 sq ft

Ensuite: 90 sq ft

Balcony: 60 sq ft

Bedroom: 175 sq ft

Bedroom: 150 sq ft

Bathroom: 70 sq ft

Sitting area: 150 sq ft

Staircase: 100 sq ft

Upper level: 1000 sq ft internal

