

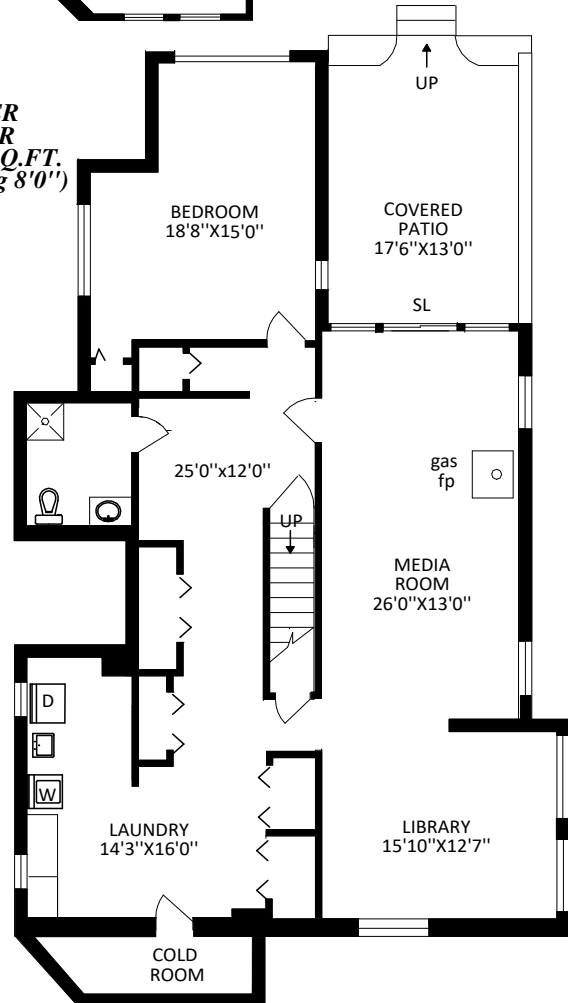
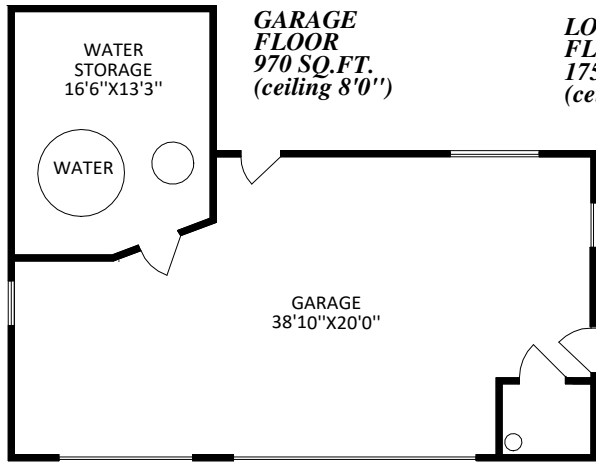
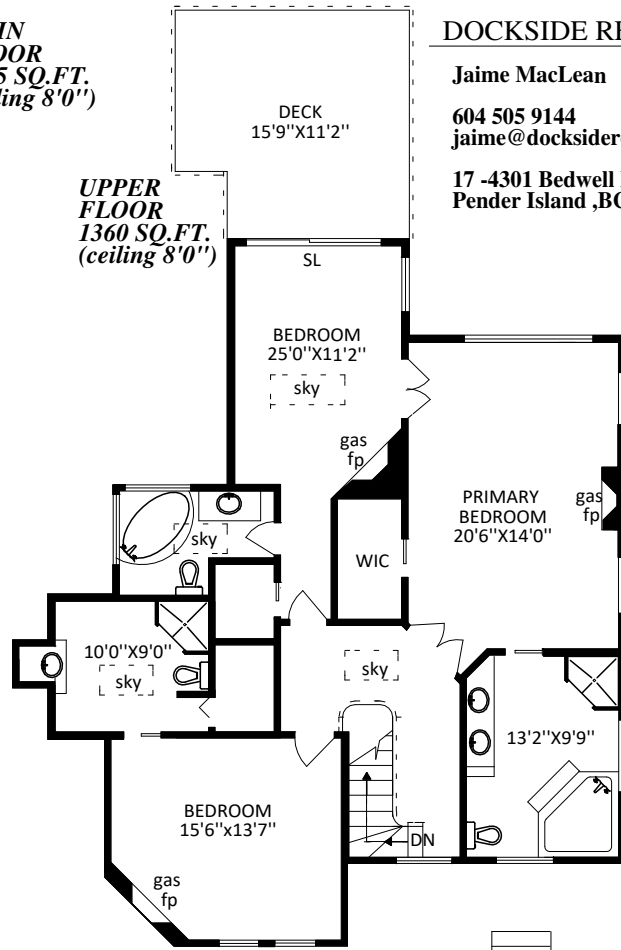
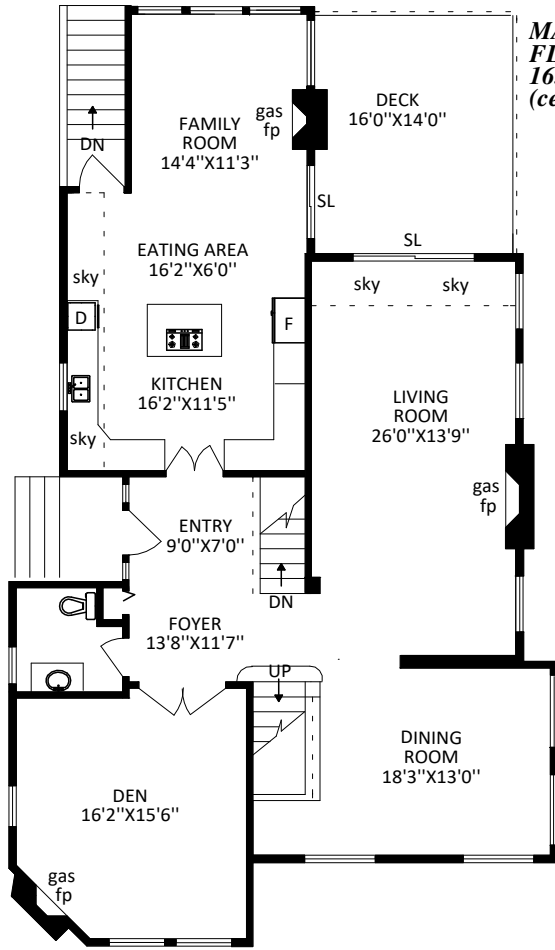
1201 BRIDGES ROAD
PENDER ISLAND BC

DOCKSIDE REALTY

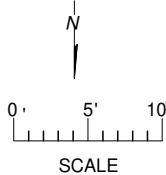
Jaime MacLean

604 505 9144
jaime@docksiderealty.ca

17 -4301 Bedwell Harbour Rd
Pender Island ,BC



FLOOR AREA ANALYSIS			
	FINISH SQ.FT.	UNFIN. SQ.FT.	TOTALS SQ.FT.
UPPER	1360	0	1360
MAIN	1655	0	1655
LOWER	1755	0	1755
TOTAL	4770	0	4770
OTHER			
GARAGE	970 SQ.FT.		
DECKS	454 SQ.FT.		
PATIO	245 SQ.FT.		



PREPARED FOR THE EXCLUSIVE USE OF JAIME MACLEAN

DATE MEASURED: JAN 17, 2023

250 744-4022
FILE 80136

PLANS MAY NOT BE 100% ACCURATE, IF CRITICAL BUYER TO VERIFY